

# Earth Discovery Institute

Promoting Conservation and Stewardship through Outreach and Education

By

Sarah Maisonneuve (Executive Director)

Victoria Bonnett (Education Director)

Mary Duffy (Outreach Director)



# Mission & Vision

Our **mission** is to inspire stewardship of San Diego's native biodiversity through environmental education and conservation.

Our **vision** is an engaged community actively supporting the conservation of San Diego's unique biodiversity.





# Environmental Education



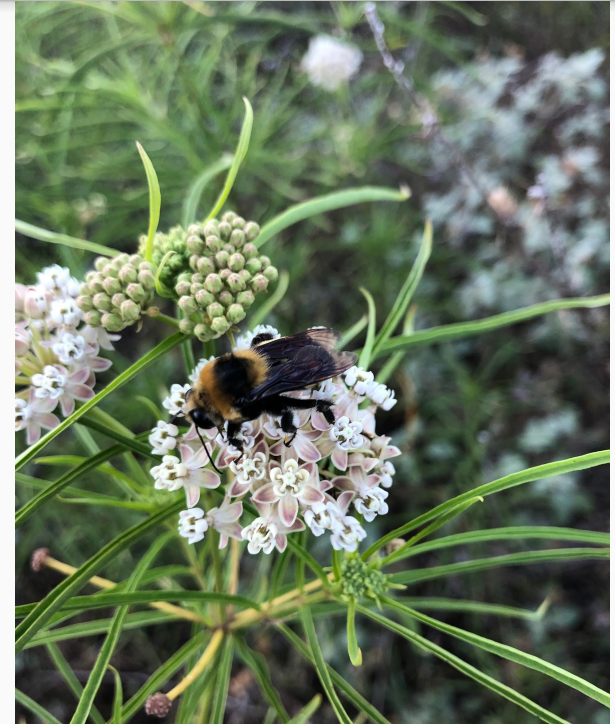
- Science-based outdoor education with students from under-resourced communities
- Guided nature hikes
- Volunteerism



# Conservation

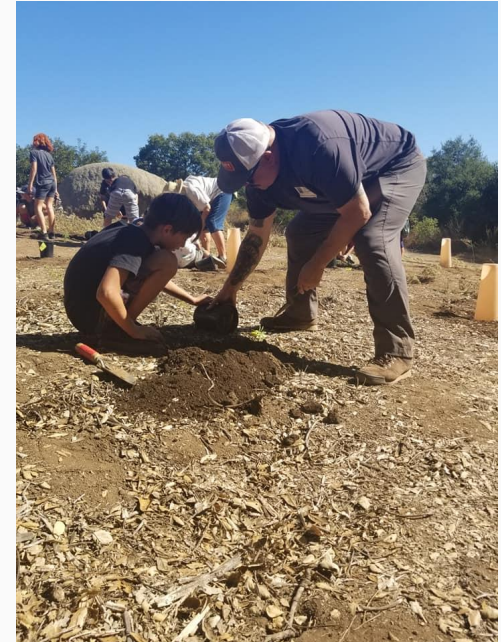


- Species conservation: focus initially on flagship and umbrella species such as western monarch butterfly
- Promote conservation and stewardship of public lands
- Engage students and community volunteers in habitat restoration
- Citizen science





# Education Program





# Impact On Students & the Land

*"We cannot protect something we do not love, we cannot love what we do not know, and we cannot know what we do not see. Or hear. Or sense."*

-Richard Louv







Since 2009, EDI has consistently worked on 6 different public lands with various funding partners resulting in the planting of 12,725 native grasses, 2,620 native shrubs and hundreds of trees added to the environment.

Since 2009, EDI has made 30,514 student contacts. This number includes 39 schools in 8 different school districts across Southeast San Diego County.





# Nature Hikes and Volunteerism





## Species conservation: Western Monarchs and Native Milkweed





# Citizen Science



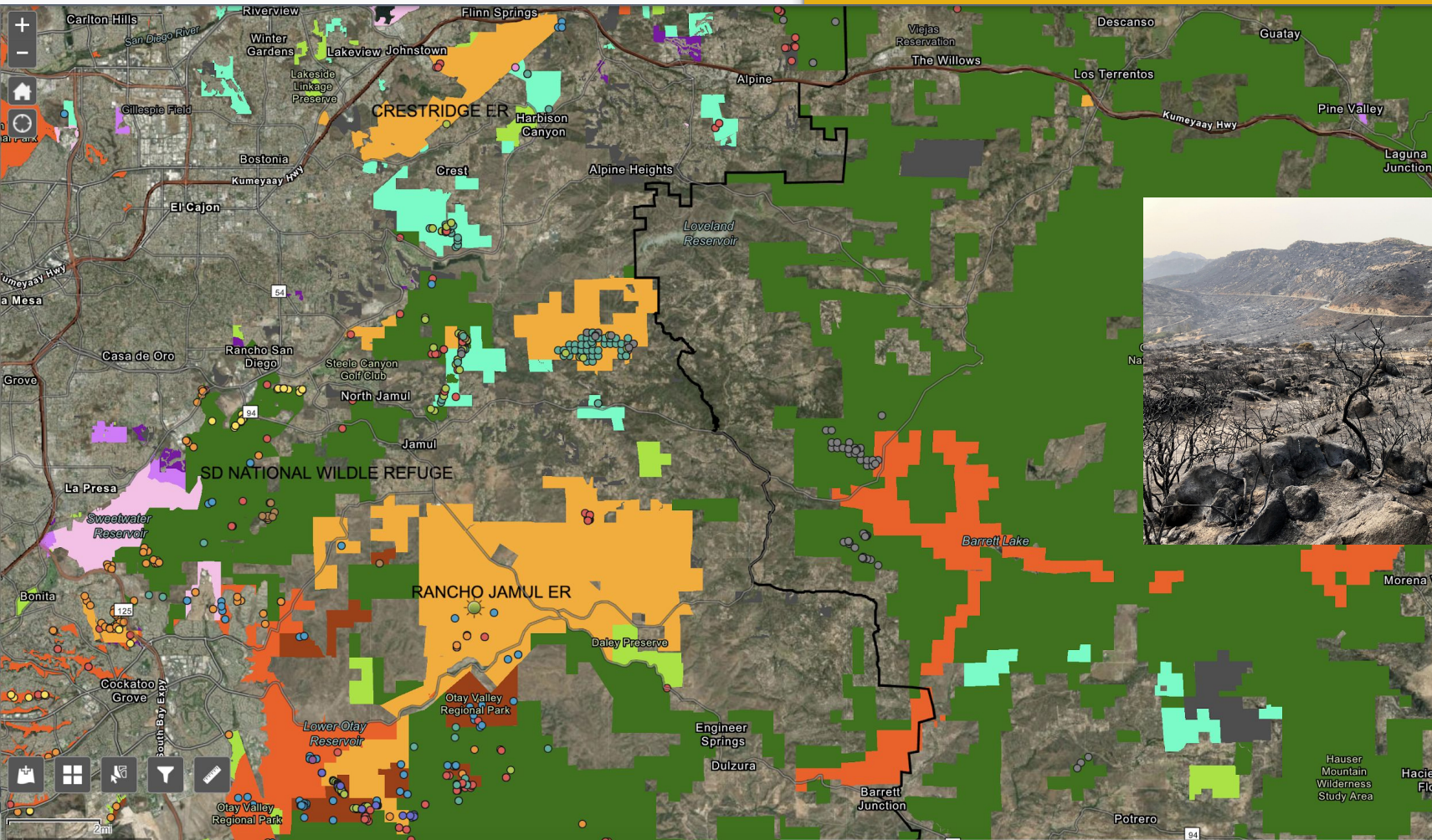


**Why our  
community  
cares: This is a  
part of the EDI  
environment,  
Gaskill Peak  
and the  
Carveacre area  
of Japatul  
Valley**





Location, location, location...





# Looking ahead

