



**Photo 1.** Fixing erosion problem near vernal pools 22 and 23, March 2016.



**Photo 2.** Southern edge of restoration area, facing west, March 2016.



**Photo 3.** Southeast corner of restoration area, facing east, March 2016.



**Photo 4.** Full vernal pool with flowering quillwort (*Lilaea scilloides*), March 2016.





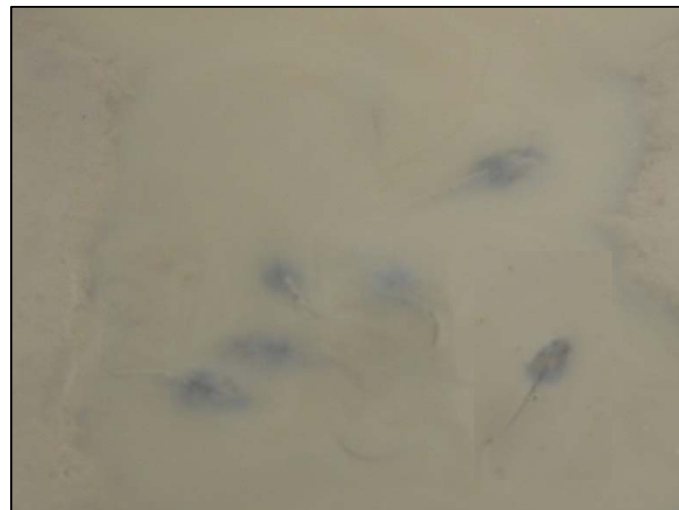
**Photo 5.** Coastal sage scrub habitat surrounding vernal pool basins, April 2016.



**Photo 6.** Minor herbivory on flowering quillwort (*Lilaea scilloides*), April 2016.



**Photo 7.** Vernal pool basin with surrounding upland habitat, April 2016.



**Photo 8.** Tadpoles, possibly western spadefoot (*Spea hammondi*) in pool 22, April 2016.





**Photo 9.** Southern pacific rattlesnake (*Crotalus oreganus helleri*) that recently vacated tunnel to artificial burrowing owl burrow on the left side of the photograph, April 2016.



**Photo 10.** Rattlesnake from Photo 9 entering adjacent tunnel to artificial burrowing owl burrow, April 2016.



**Photo 11.** Southeastern portion of restoration site, May 2016.



**Photo 12.** Southern edge of restoration area, facing west, May 2016.





**Photo 13.** Upland habitat surrounding vernal pool basins, May 2016.



**Photo 14.** Weed abatement on the restoration site, May 2016.



**Photo 15.** San Diego button-celery (*Eryngium aristulatum* var. *parishii*), May 2016.



**Photo 16.** Otay Mesa Mint (*Pogogyne nudiuscula*), May 2016.





**Photo 17.** Southern portion of site, showing herbicide cages around cactus plants, August 2016.



**Photo 18.** Site maintenance activities, August 2016.



**Photo 19.** Vernal pools and upland habitat in summer dormancy, August 2016.



**Photo 20.** Vernal pools and upland habitat in summer dormancy, August 2016.