

SAN DIEGO FERAL SWINE ERADICATION PROJECT GAME CAMERA MANAGEMENT

By

Gary Brennan

SDFSEP Project Lead



United States Department of
Agriculture
Animal and Plant Health Inspection
Service



CAMERA MANAGEMENT GOALS

- Have enough cameras to monitor San Diego County for positive and negative feral swine detection results.
 - The SD project has over 120 cameras deployed and has had over 535 geographic placements during the five-year project.
- Select the right camera for the job, i.e. Budget, normal v. cellular, megapixel range, wide v. normal lens, SD Card size, power options, customer service, warrantee, etc...
- Mounting concerns: Trees, “T” posts, fences, rocks, brush and grass, livestock, and cell service for cell phone capable cameras.
- Security of the equipment in the field. (theft, damage by vandalism, fire, and sun).
- Support of cameras (personnel and consumables (Security boxes, batteries, straps, cables and locks).



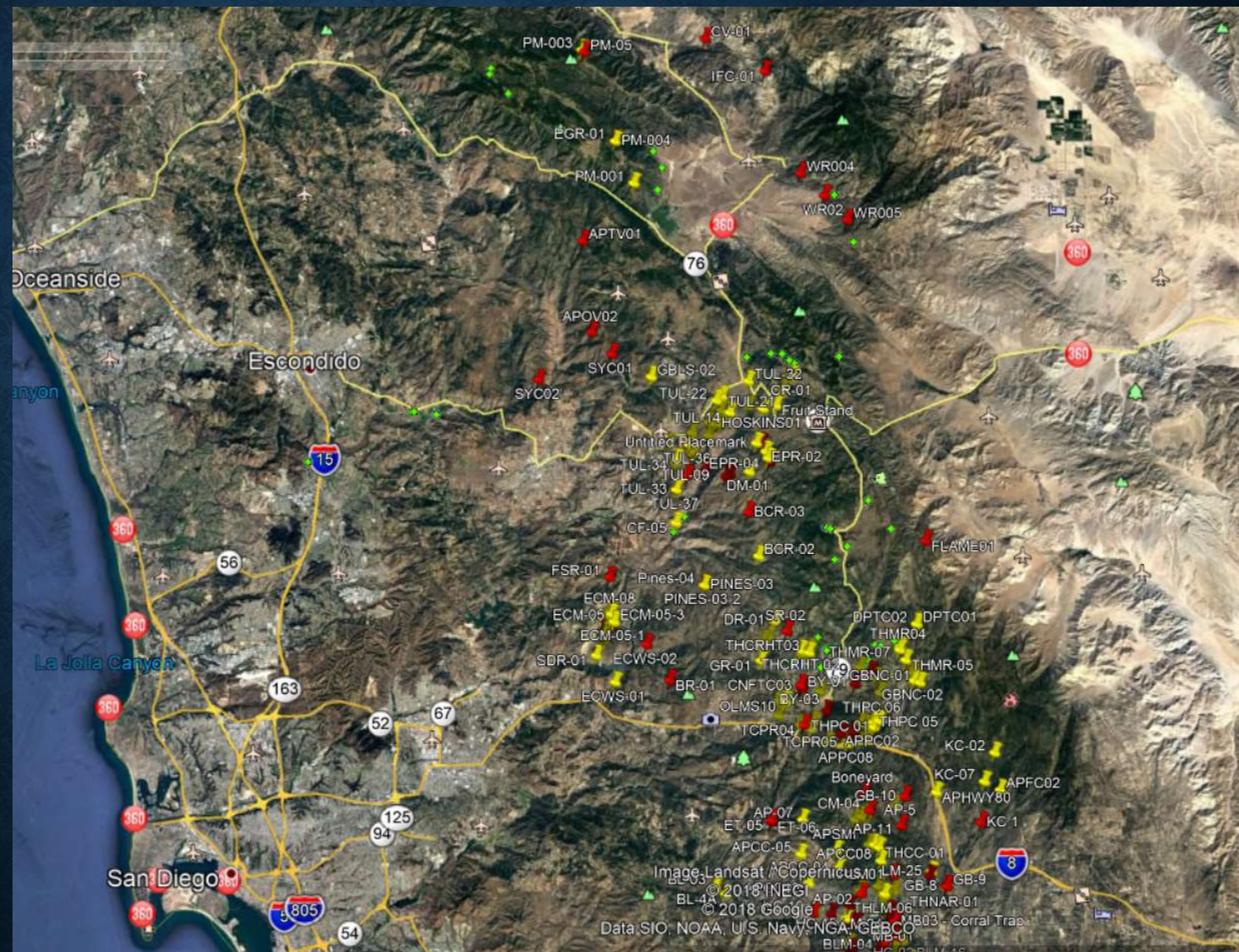
San Diego County Coverage.

In the 1,500 sq/ mile coverage area, land access is the number one limit to camera surveillance

Interagency cooperation is the key to a successful project.

Yellow pins are active

Red pins have been removed

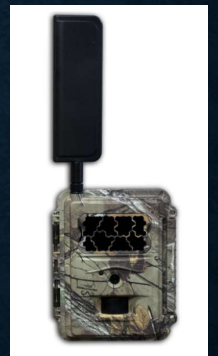


PROGRAM CAMERAS

- Moultrie M-880 Gen 1/Gen 2 and M-990
- 8 MP Capable (Adjustable)
- 8 AA Batteries or optional 6V rechargeable battery (\$75, sold separately)
- Accepts up to 32 GB SD card
- IR Flash – 70 feet
- Cost: \$100-\$150
- Security Box, Cable, & Lock \$60/unit



- JAGER PRO 4G I.C.E.™ Cam Verizon
- 8 MP Capable (Adjustable)
- 12 AA Batteries or optional 6V rechargeable battery (\$75, sold separately)
- Accepts up to 32 GB SD card
- Cost: \$450.00, Data Plan: \$25/camera/month X 5=\$1500/yr.
- Security Box, Cable, & Lock \$60/unit



CAMERA MANAGEMENT GOALS

- Have enough cameras to monitor San Diego County for positive and negative feral swine detection results.
 - The SD project has over 120 cameras deployed and has had over 535 geographic placements during the project.
- Select the right camera for the job, i.e. Budget, normal v. cellular, megapixel range, wide v. normal lens, SD Card size, power options, customer service, warranty, etc...
- Security of the equipment in the field. (theft, damage by vandalism, fire, and sun).
- Support of cameras (personnel, consumables (batteries, straps, cables and locks)).



