



# White Italian Snail (*Theba pisana*)

August 2019



# White Italian Snail/ white garden snail (*Theba pisana*)



Sabre Springs residential area



# Bressi Ranch, Carlsbad



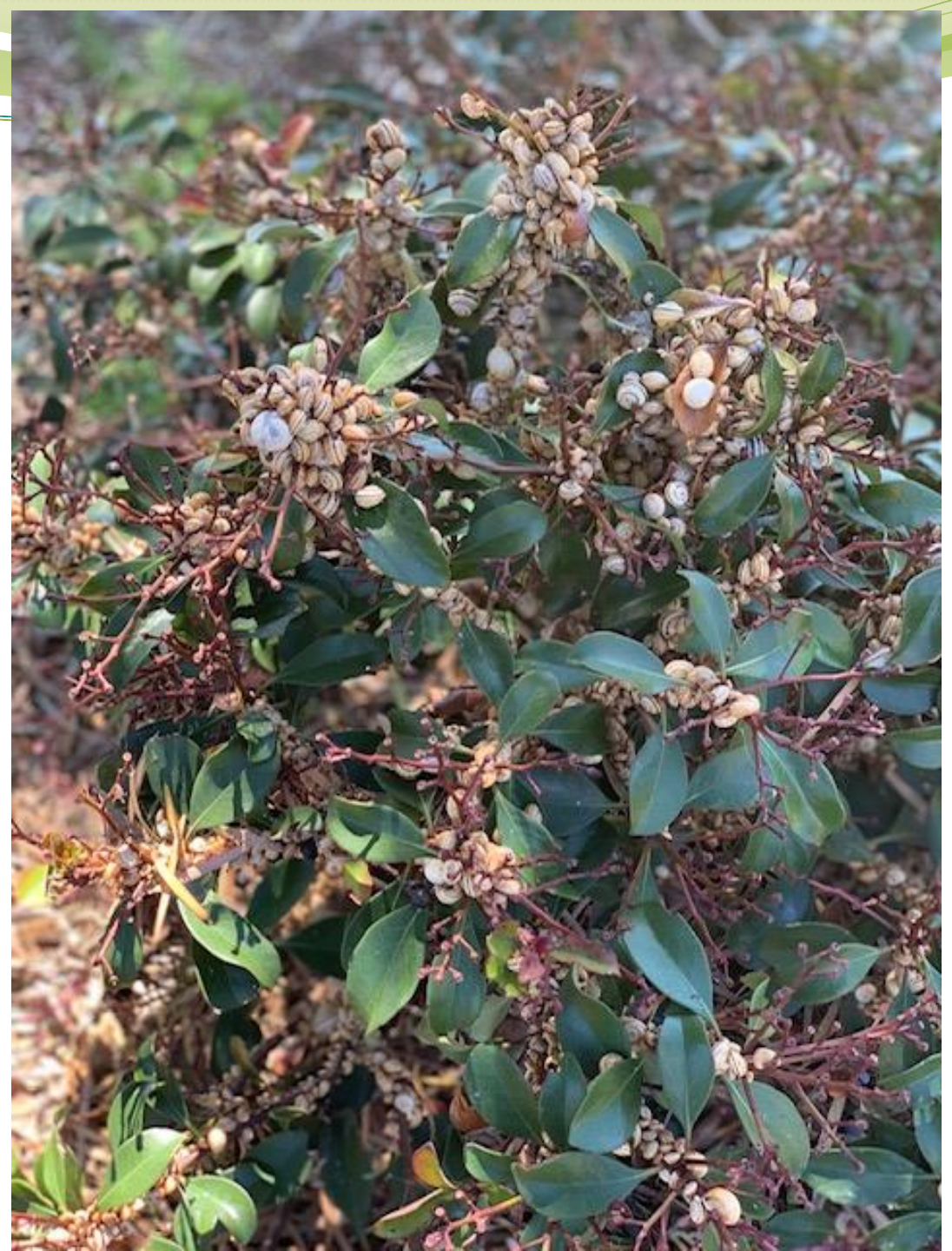




Infested trees in  
Bressi Ranch,  
Carlsbad





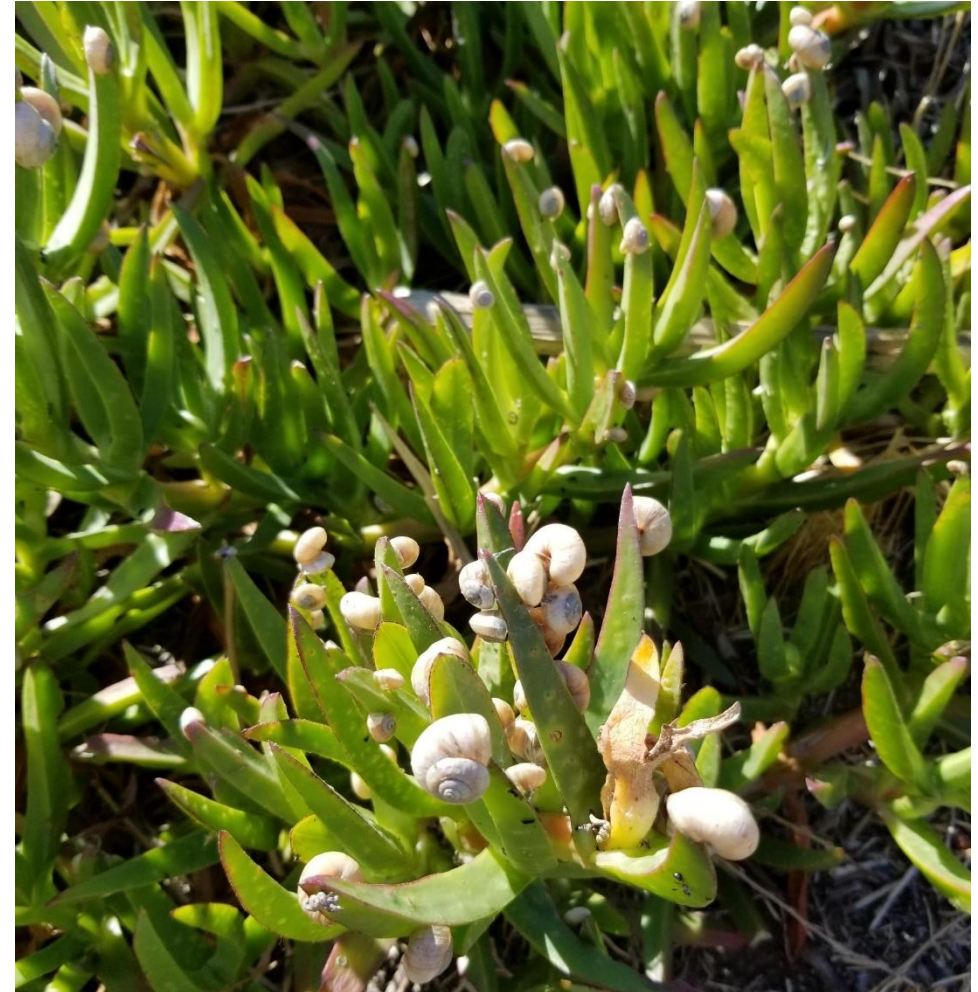








# Tecolote Canyon









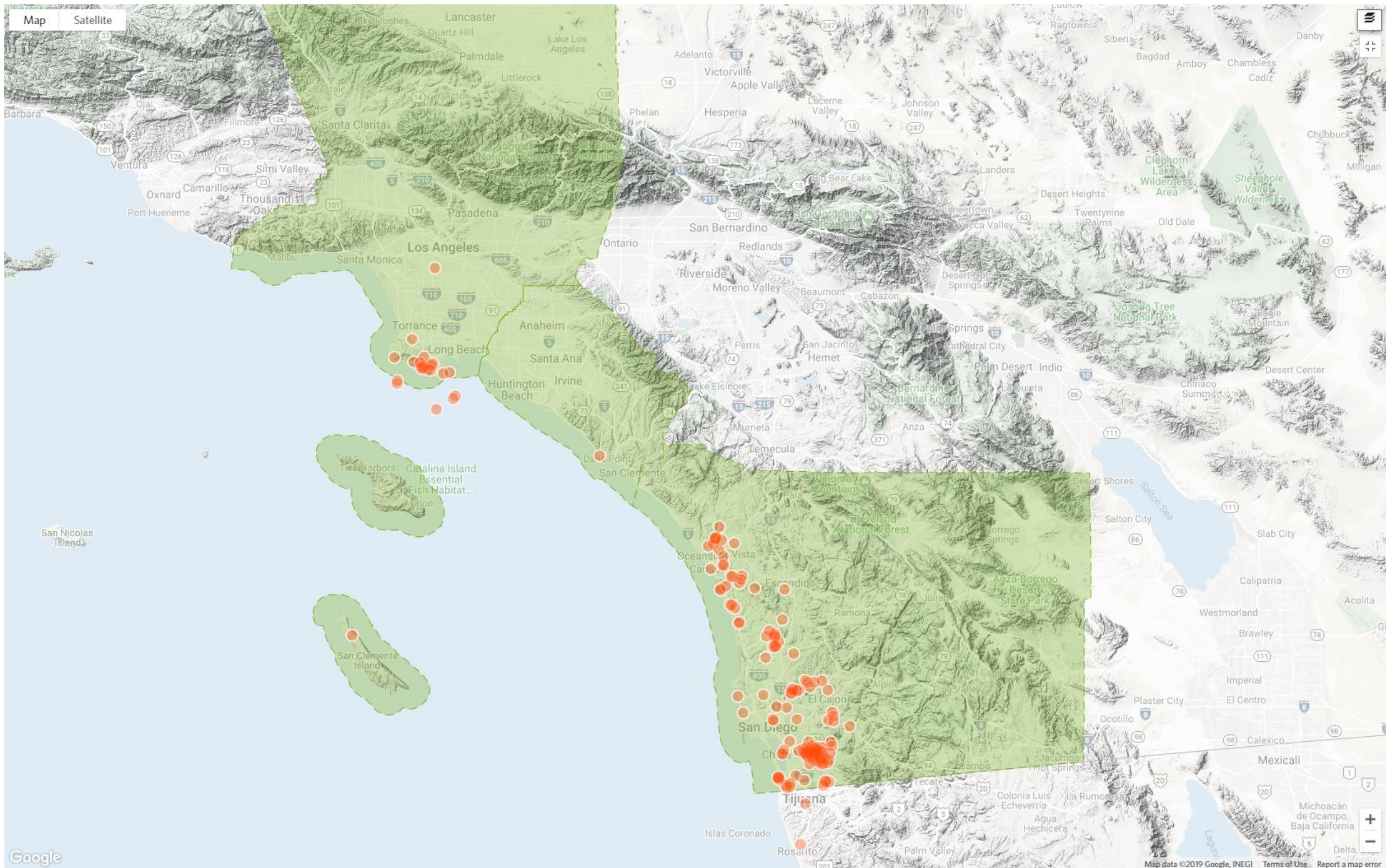
# White Italian Snail (*Theba pisana*)

Information from: Cheryl Wilen

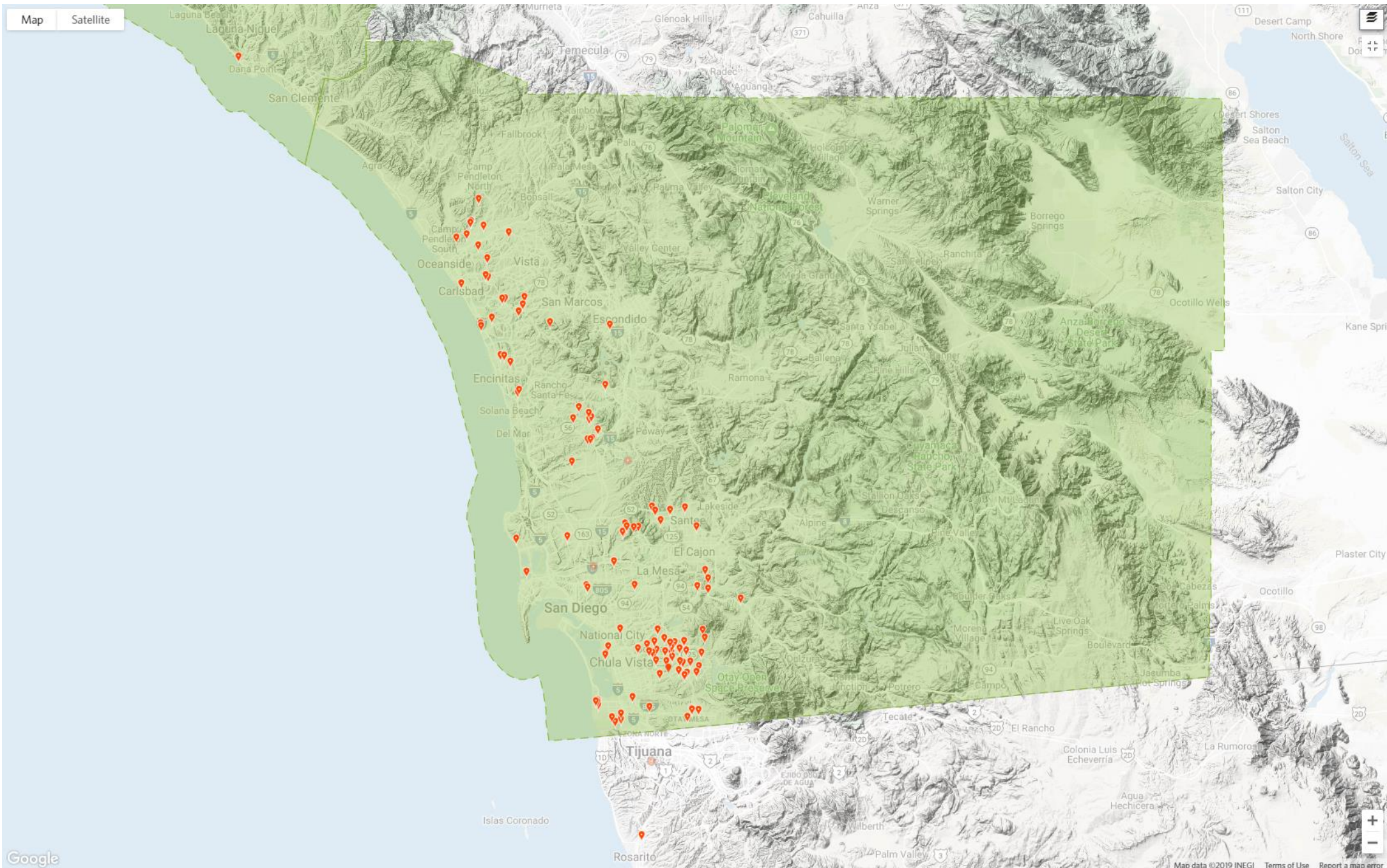
(Area IPM Advisor ,UC Statewide IPM Program and UC Cooperative Extension)

- First recorded in CA (La Jolla) in 1914
- Considered eradicated through considerable effort ~1927
- The snails were again found in San Diego in 1985, at 5 isolated location in about a 10 square mile area.
- It is established only in San Diego County, but reported in Los Angeles and Orange counties. No published records for North American populations outside of California
- B-rated pest in CA (shipping)
- Grapes, avocados, ornamentals, fruit trees, landscape plants











# Concerns

- Explosive populations
- Will eat native shrubs and seedlings
  - In Otay Ranch, killed 3 planted 15-gallon Torrey pine trees in 4 months
  - Found near our rare plants
- Disease vector (rat lungworm nematode)



# Management

Hodel et al.: White Garden Snail (2018)

- Exclude: check crates, boxes, and plants shipped/moved from infested areas
  - Detect: search plants, fences, posts, walls, and other vertical surfaces
  - Manage
    - When aestivating: Out in open. Hand-picking, knocking down, then sweeping and /vacuuming.
    - When active: Metaldehyde baits
- Cheryl Wilen (UCANR) – cut down tall weeds where they estivate, testing steam option
- Jann Vendetti (LACNHM) – ducks, chickens, allow snails to “mass”



