

# Resource Management Plan Implementation

*Good Morning...*

*...Thank you for having us today*

*Jennifer Price*



*Jake Enriquez*



**Parks and Recreation**

- > [Parks and Recreation Home](#)
- > [About Us](#)
- > [On-line Services and Reservations](#)
- > [Interactive County Parks Map](#)
- > [Parks and Attractions](#)
- > [Community, Recreation, and Teen Centers](#)
- > [Programs and Activities](#)
- > [Trails](#)
- > [Development Projects](#)
- > [Management Plans](#)
- > [Public Review Documents](#)
- > [News and Events](#)
- > [Employment/Volunteer](#)
- > [FAQs](#)
- > [Contact Us](#)
- > [Going Green](#)

## Resource Management Plans

[Printer Friendly](#)

A++ | A+ | A

The County of San Diego is one of several jurisdictions participating in the [Multiple Species Conservation Program \(MSCP\)](#). The overall MSCP goal is to maintain and enhance biological diversity in the region and conserve viable populations of endangered, threatened, and key sensitive species and their habitats, thereby preventing local extirpation and ultimate extinction. The goal of the plan is to acquire or permanently protect 98,379 acres in the unincorporated area of South County. In the eleven years since the MSCP South County Subarea Plan was approved, thousands of acres of land have been added to the MSCP by local, State and Federal agencies. The overall effect of the MSCP is that it provides for large, connected preserve areas that address a number of species at the habitat level rather than species by species, and area-by-area. This creates a more efficient and effective preserve system as well as better protection for the rare, threatened and endangered species in the region.

Major programs are in place to manage, maintain and monitor plant and animal life on the lands once they are in the preserve in order to ensure the conservation of their unique resources. The County Department of Parks and Recreation (DPR) is responsible for managing the MSCP lands the County owns and acquires. Management activities include but are not limited to, trash removal, passive recreation, ranger patrol, signage and fencing, fire management, non-native plant species removal and cultural resource protection.

DPR is also responsible for monitoring these MSCP lands. Selected species and habitats are carefully monitored with the goal of ensuring the long-term health of populations of priority plant and animal species. Functional habitats and wildlife linkages will also be ensured through these activities.

To view information regarding specific lands managed and monitored by the County, please click on one of the following links:

**[Map of South County MSCP Subarea Plan Management and Monitoring Efforts](#)**

# Resource Management Section

## Five Elements

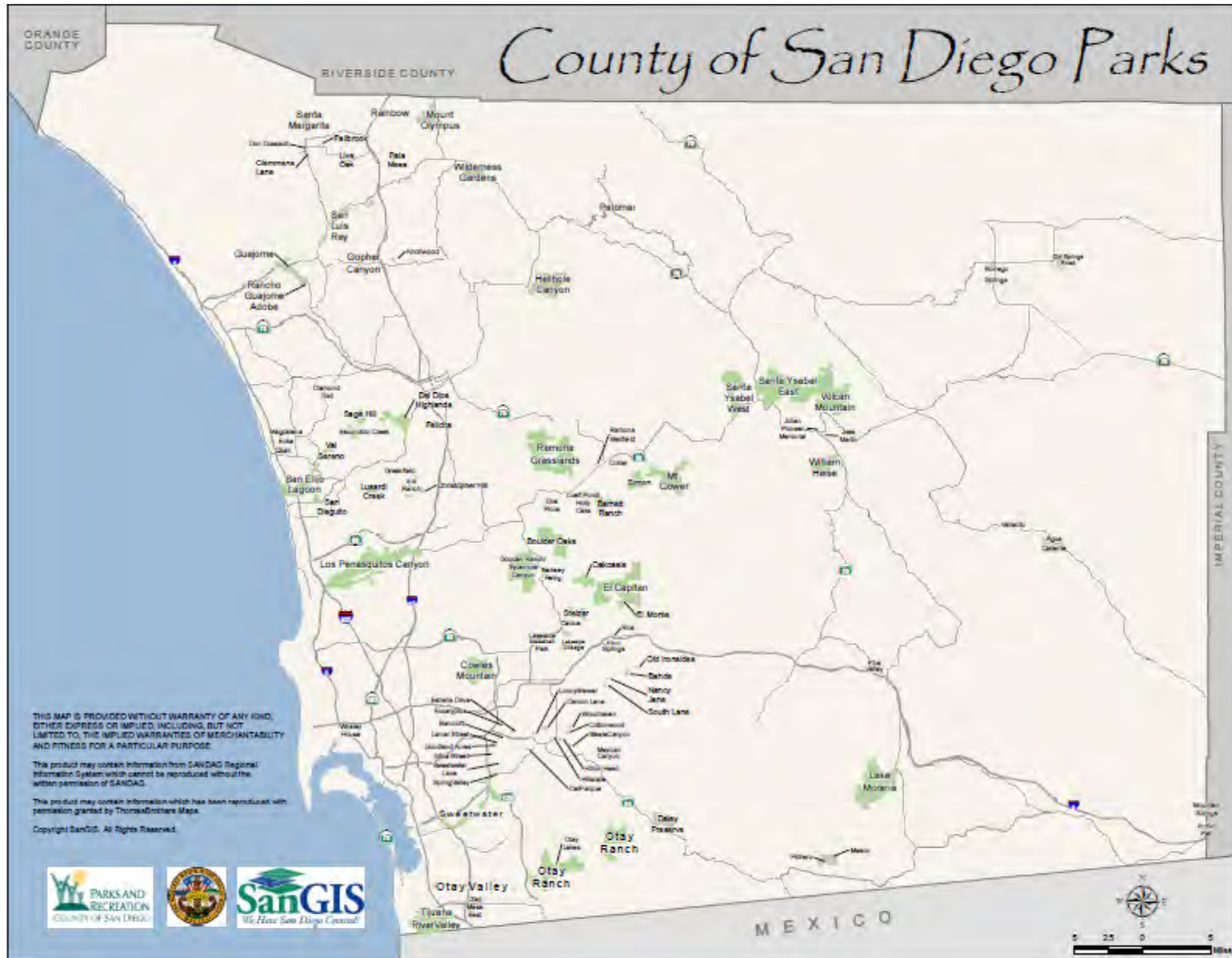
- Biological Resources
- Vegetation Management
- Public Use, Trails, and Recreation
- Public Access and Facility Maintenance
- Cultural Resources



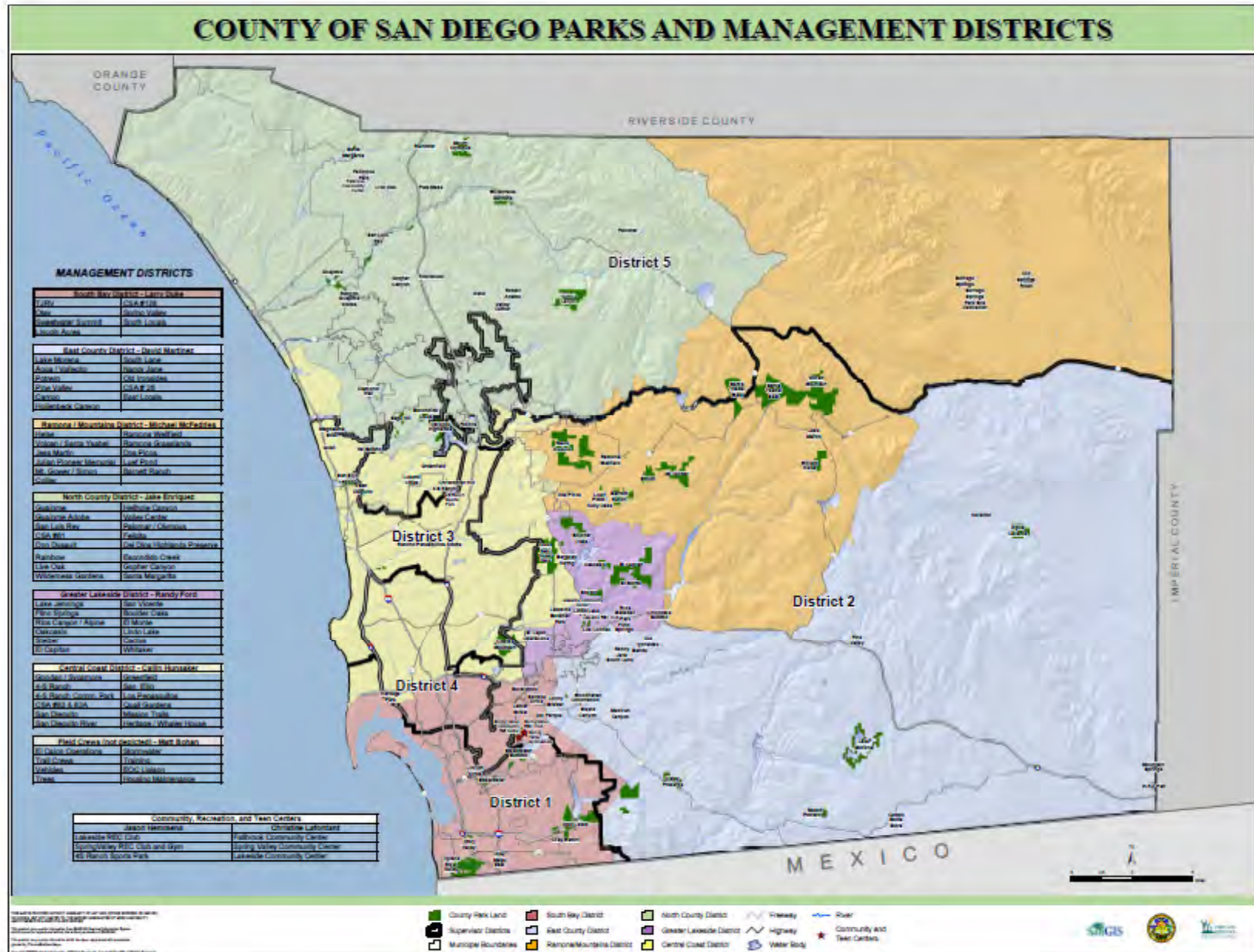
1 / 1

69.1%

Find







# Vegetation Management Element:

- Habitat Restoration
- Non-Native Plant Species for removal and control
- Fire prevention, control and management



# Habitat Restoration

- Initial and Ongoing Stewardship
- Project related
- Natural occurrence





# Non-Native Plant Species Removal and Control



Treated artichoke thistle







# Fire Prevention, Control and Management





# Public Use, Trails, and Recreation Element:

- Public Access
- Fencing and Gates
- Trail and Access Road Maintenance
- Signage and Lighting





# Public Access





# Fencing and Gates



Fencing to prevent off-road vehicle impacts



Fencing to protect sensitive habitats –  
Santa Maria Creek



# Trail and Access Road Maintenance





# Signage and Lighting



## Water Wisdom



## Stop the Ocean Blues...

watershed (n):

An area of land that drains  
to a common waterbody.  
A watershed runs for a few  
miles, but it's the same.

We all live in a watershed...

In fact, where you're sitting right now is a watershed.  
Watersheds drain rain and runoff from through creeks, streams, lakes  
and rivers, eventually flowing into the ocean.

Some watersheds are big, some are small, some are  
different, but they all have one thing in common.

Falco's County Park has two watersheds that border it:  
the San Diego River watershed and the San Marcos River watershed.

The San Diego River watershed is a drainage area of approximately  
341 square miles. The San Marcos River watershed is a drainage area of





# Operations and Facility Maintenance Element

- Litter/Trash and Materials Storage
- Hydrological Management
- Emergency, Safety and Police Services
- Adjacency Management Issues





# Litter/Trash and Materials Storage





# Hydrological Management

- Facility Pollution Prevention Plan
- RWQCB
- Preserves with rivers, creeks and streams are “High” priority.





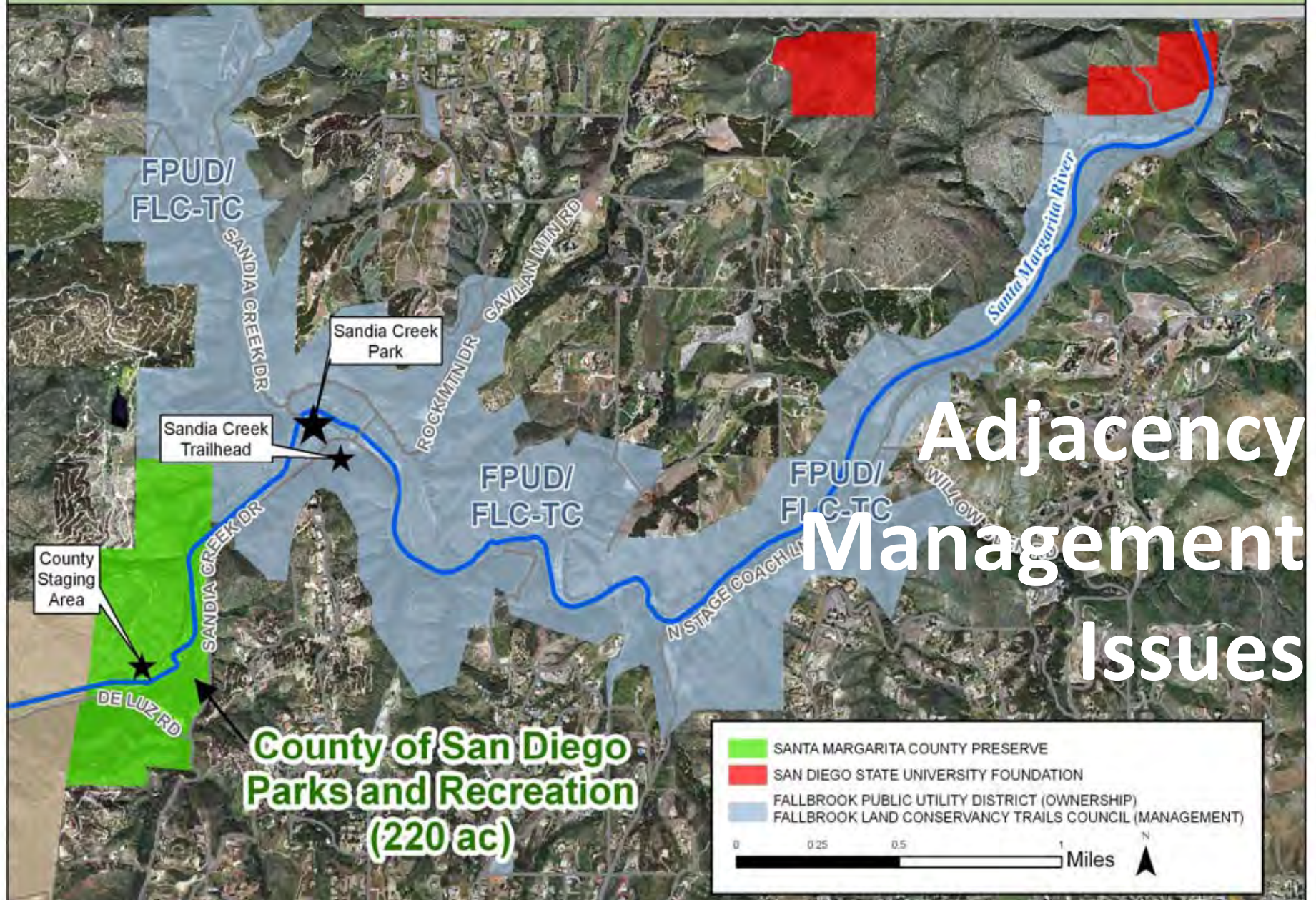
# Emergency, Safety and Police Services

- Establish working relations with local offices
- Site Emergency Response Plan
- County Office of Emergency Service





# Santa Margarita Open Space Ownership/Management



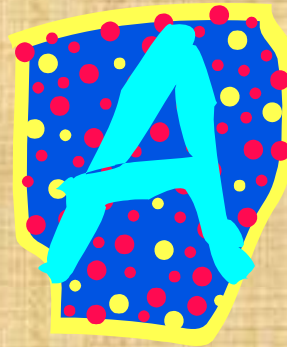


# Cultural Resource Element





# Wrap Up



Input...

