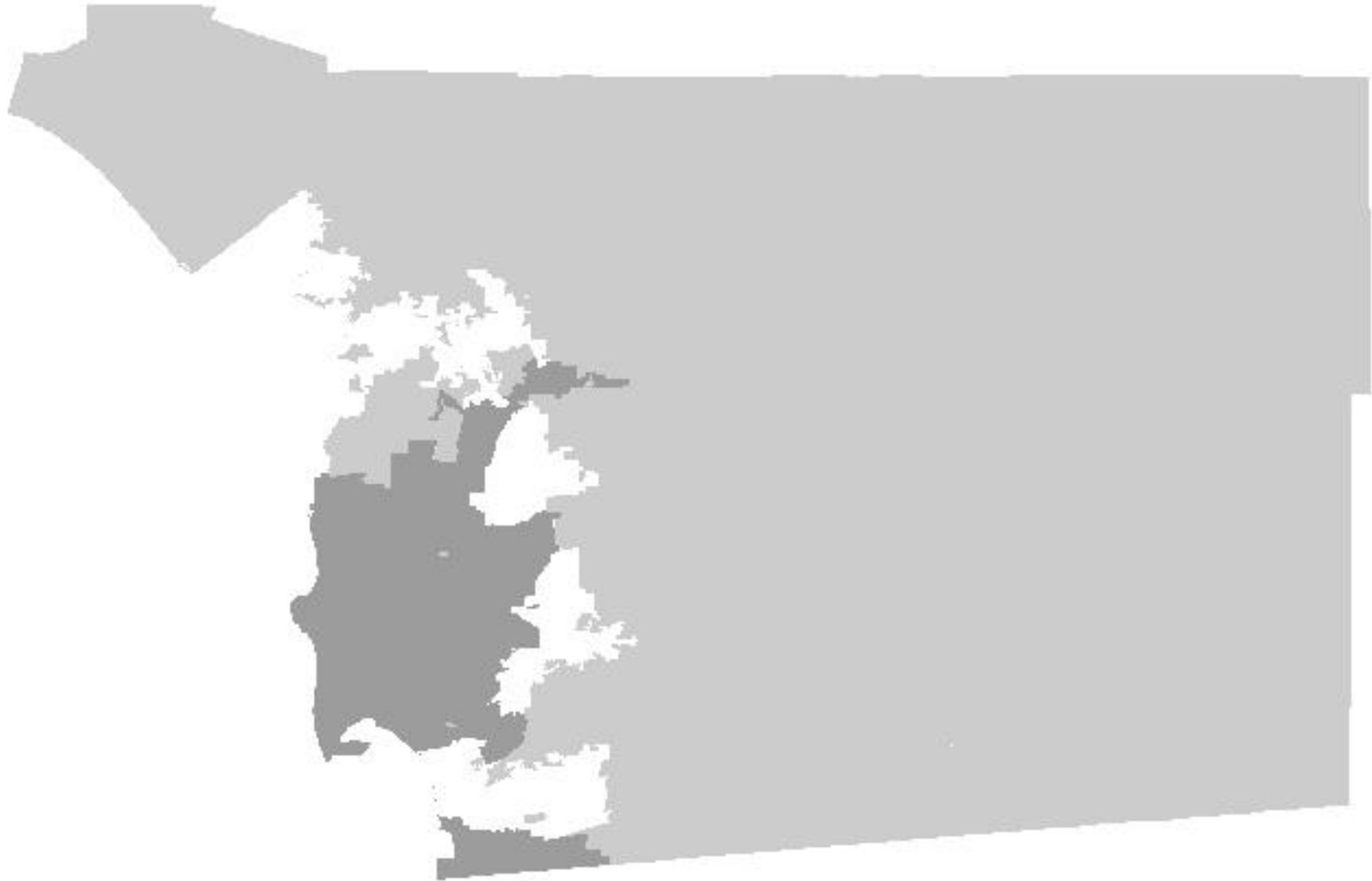


Managing Threats on Local Reserves Surrounded by the Urban Landscape

International Urban Wildlife Conference
San Diego State University
June 5, 2017

Betsy Miller
bmiller@saniego.gov





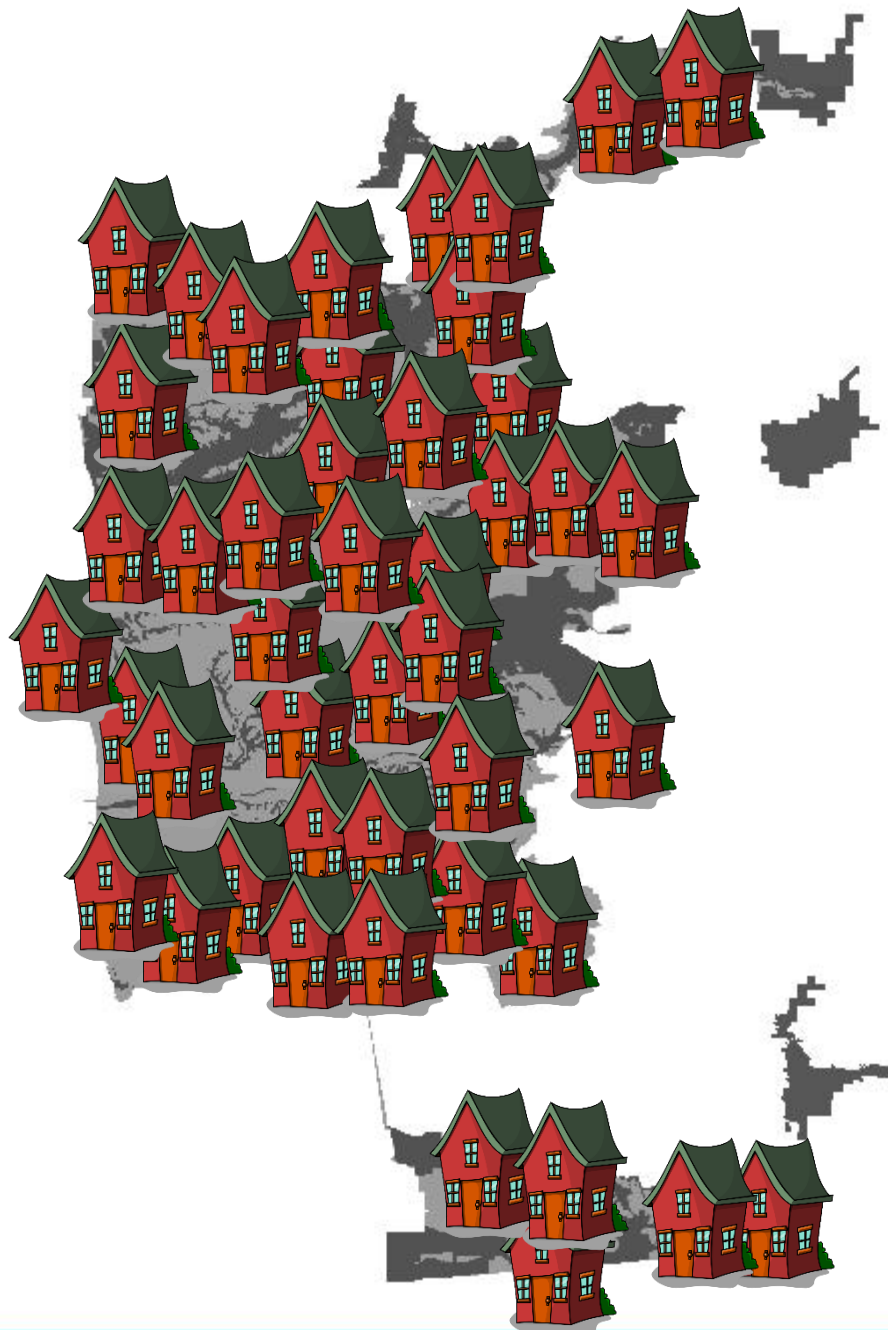














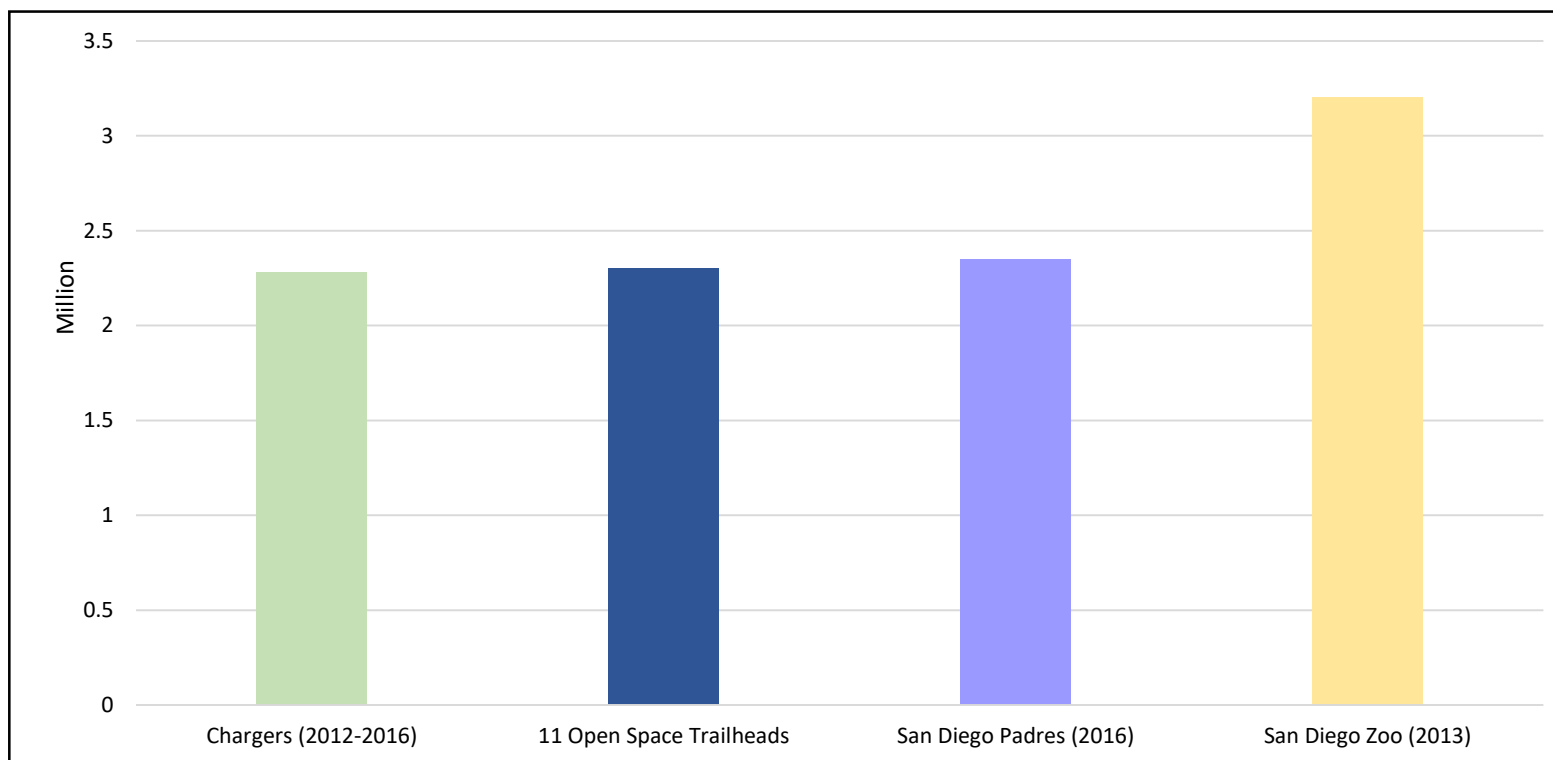
Park Use Study

- 11 trailheads
 - 178 total
- Use is not constant across sites
 - 3 sites accounted for >75% of use
- Use varies by season and time of day

Model	Site / Park	Estimated Use
Cowles	Cowles	1,058,641
Visitor's Center	Visitor's Center	393,649
Barker Way	Barker Way	317,205
PQE/EQU	Equestrian	115,889
	PQ East	115,889
Other Small Sites	Glider Port	53,382
	Lopez Canyon	53,382
	Miners	53,382
	PQ Creek	53,382
	PQ West	53,382
	Portobelo	53,382
Grand Total		2,321,564

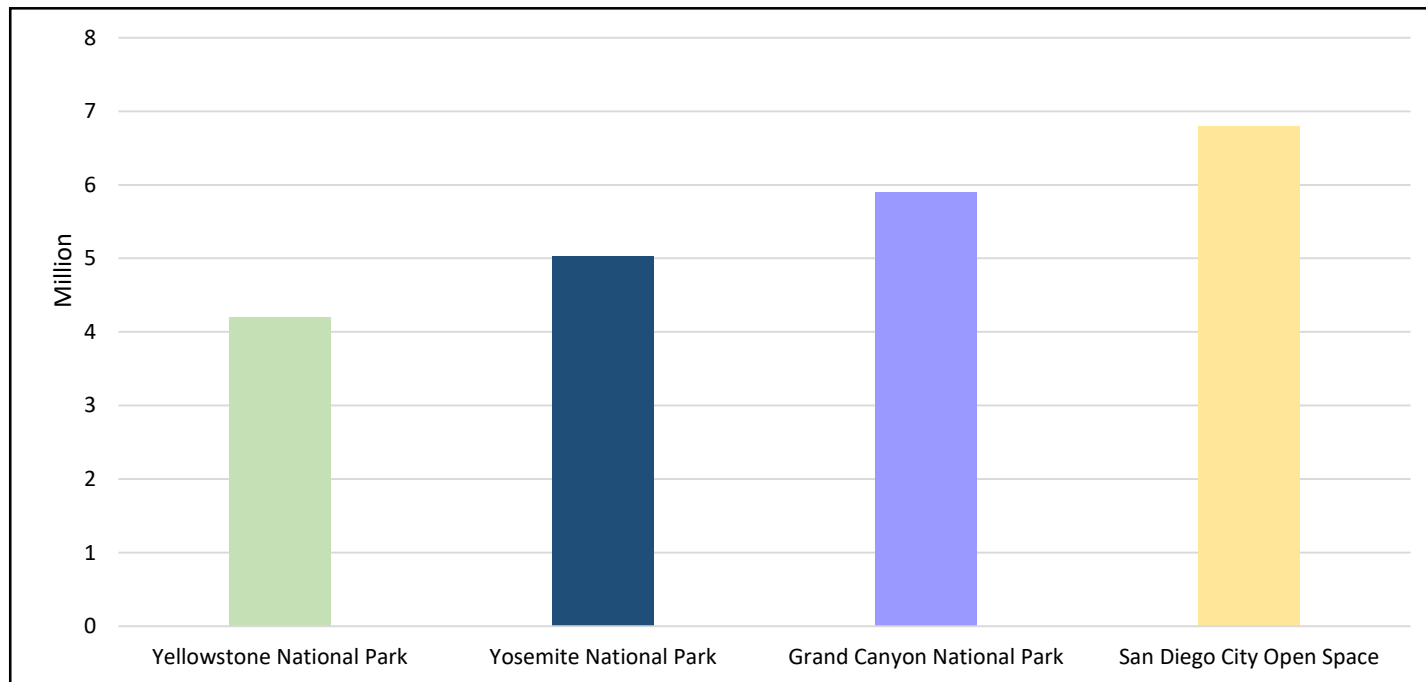
Park Use Study

- Study estimate at 11 sites in 12-month period = 2.3 million visits



Park Use Study

- (Potentially inappropriate) Extrapolation of study to all City sites = 6.8 – 8.4 million annual visits



Park Use Study









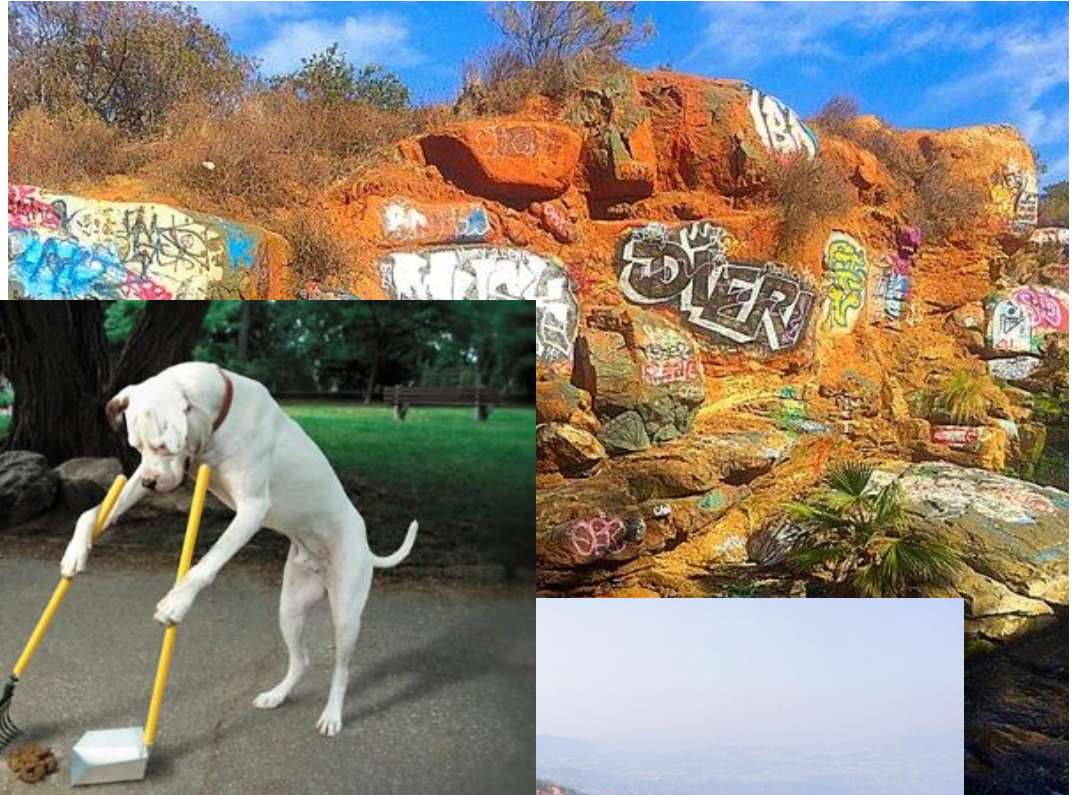




WARNING

LEWD ACTS
IN PUBLIC PLACES
ARE UNLAWFUL

ALL AREAS
WITHIN THIS PARK
ARE PUBLIC PLACES





Open Space Team

- 6 Senior Park Rangers
- 20 Park Rangers
- 3 Pesticide Applicators
- 1 District Manager
- 2 Grounds Maintenance Workers
- 1 Grounds Maintenance Manager
- 2 Senior Natural Resource Planners
- 1 Senior Biologist
- 2 Student Interns

































Acknowledgements

San Diego State University

Dr. Douglas Deutschman

Ms. Spring Strahm

Thank you

Questions?

Betsy Miller

bmiller@san Diego.gov