

Strengthening SALC: the Sustainable Agricultural Lands Conservation Program



Dr. Chandra Richards

Agricultural Land Acquisitions Academic Coordinator II

Sustainable Agricultural Lands Conservation (SALC) Program



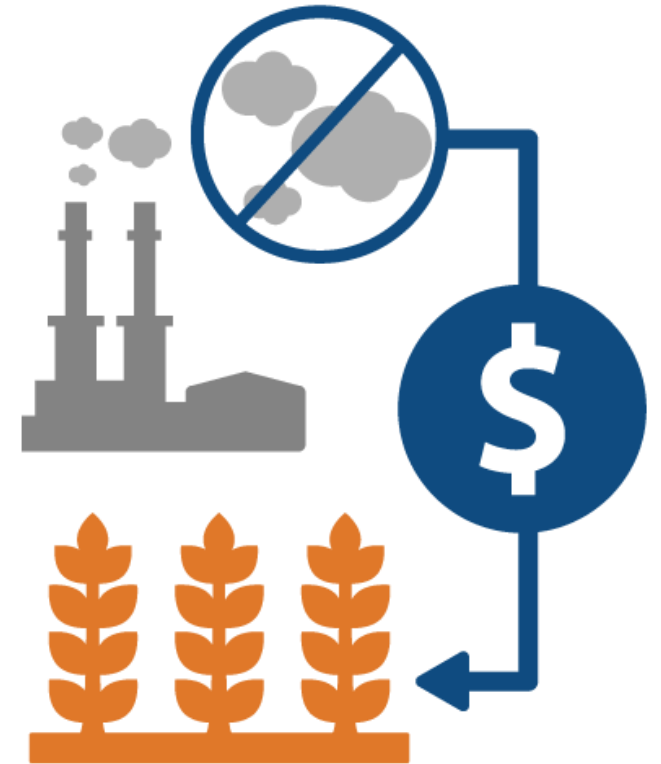
Successes in SALC over Rounds 1-6 (2014-2020)

\$4.6 MILLION awarded for 24 Planning Grants

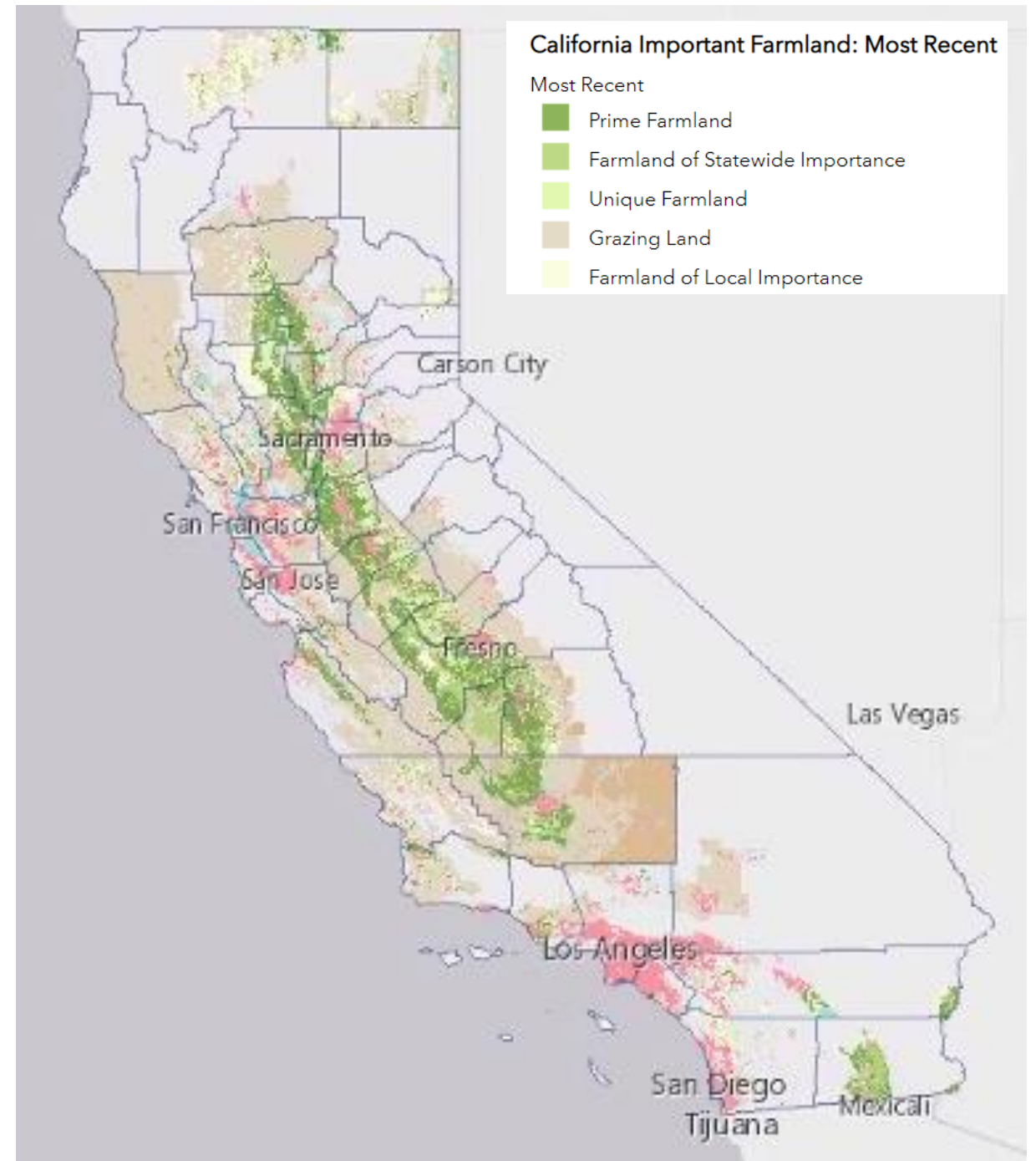
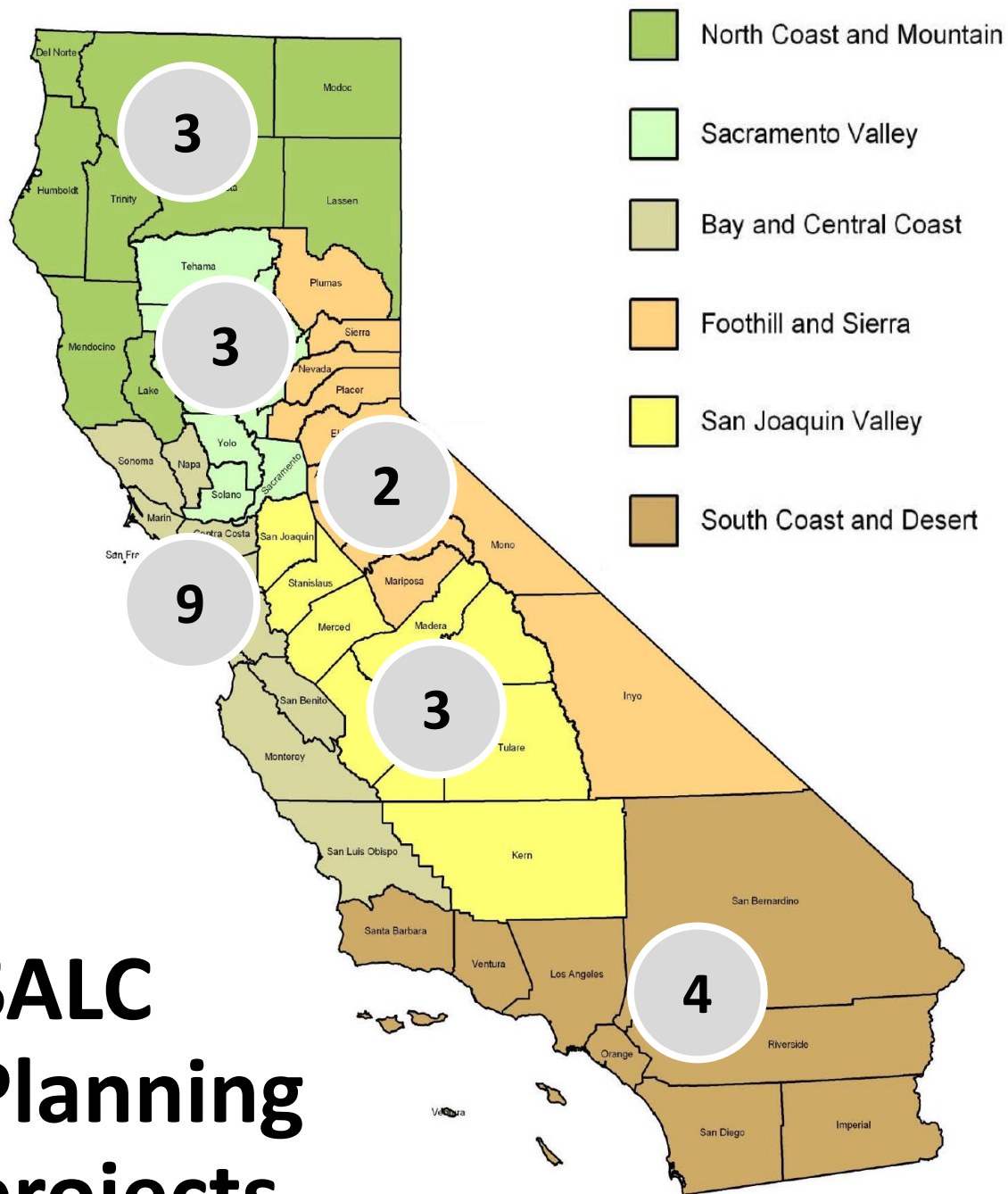
\$225 MILLION awarded for 123 Acquisition Grants

129,100 ACRES of agricultural lands conserved

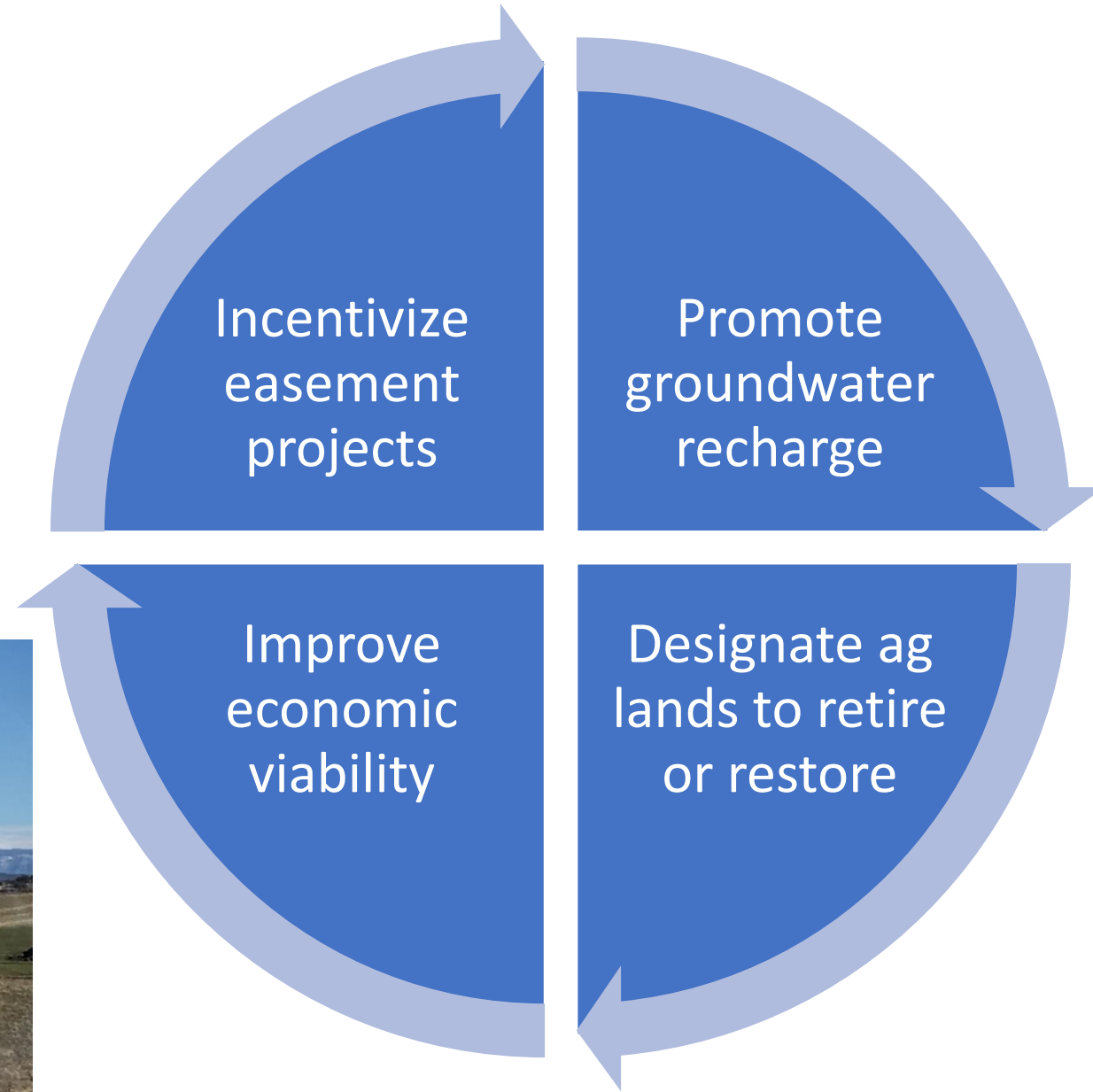
18.8 MILLION MT GHG emissions avoided



SALC Planning projects



Planning project in **the County of Madera**



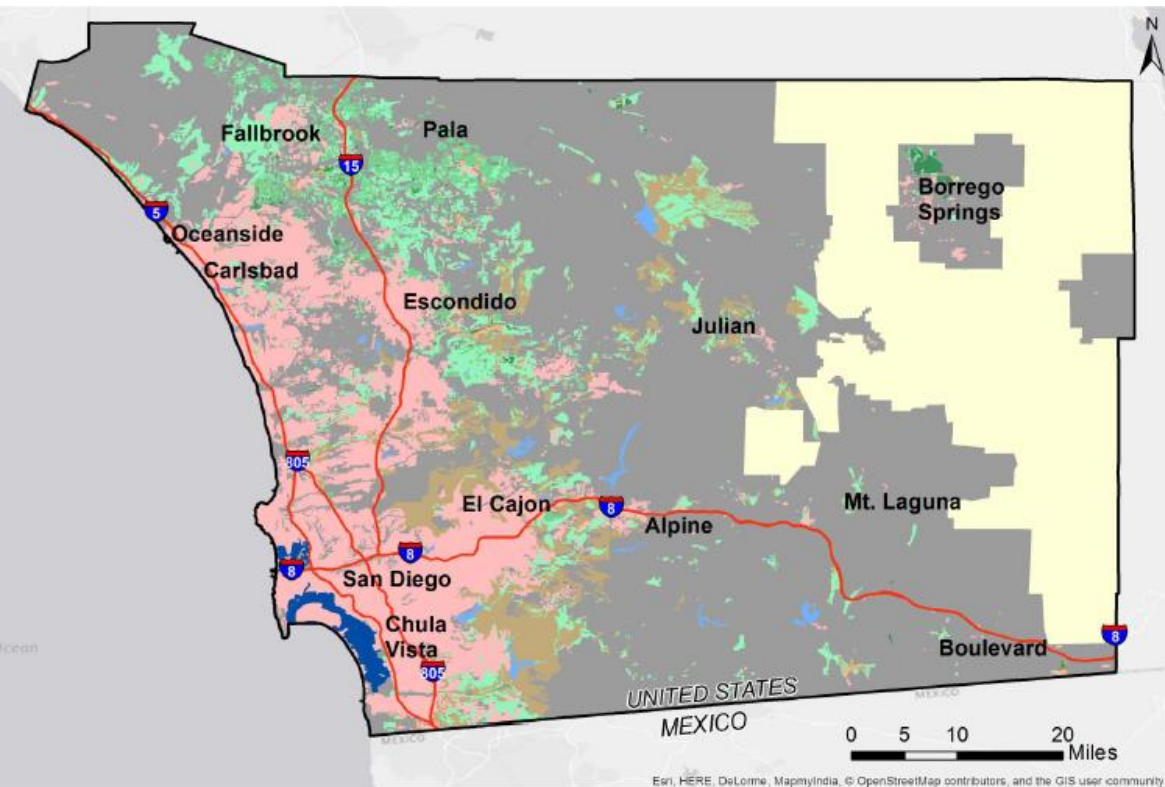
Planning project in San Diego County



RESOURCE
CONSERVATION

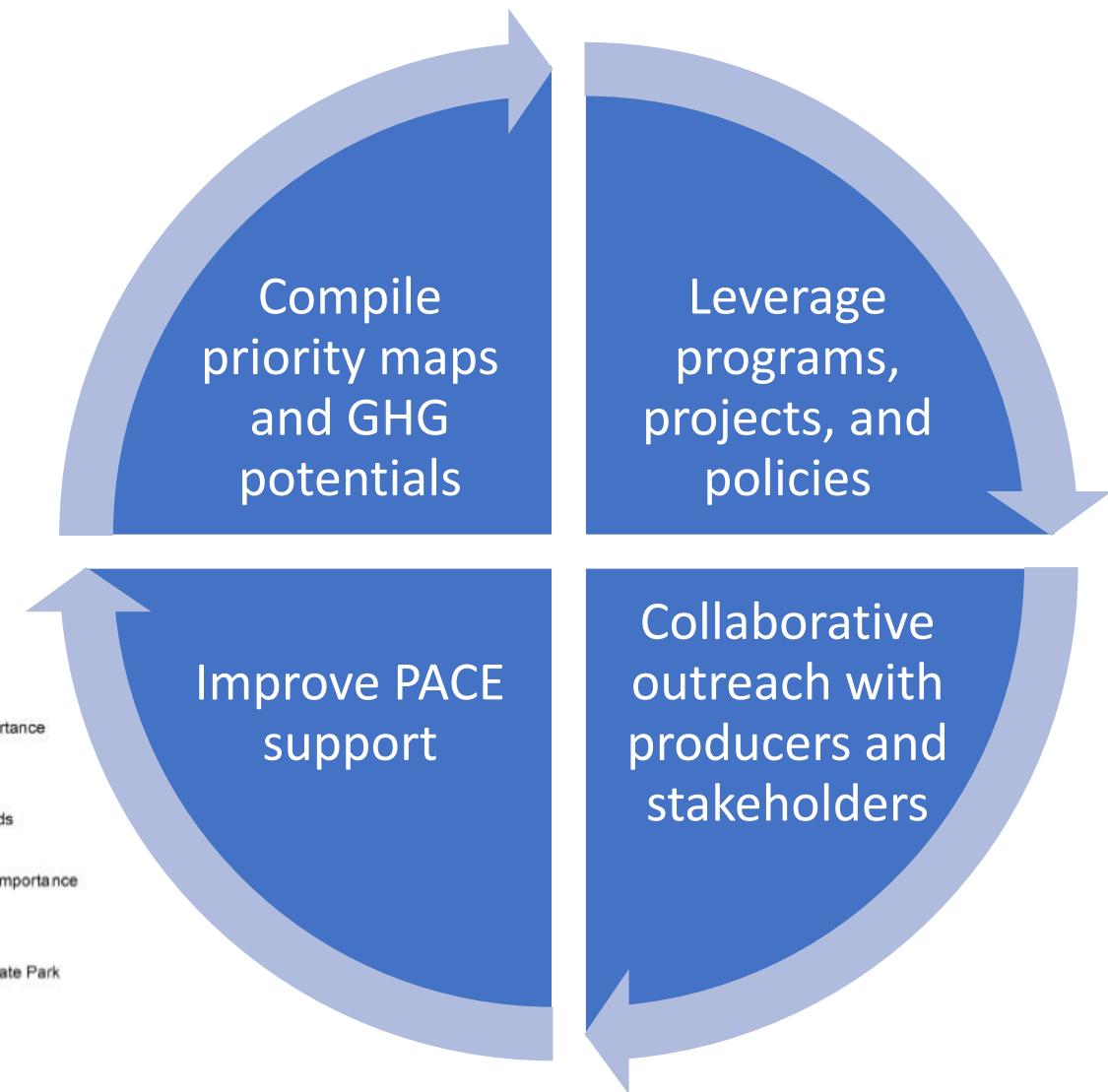


DISTRICT
Greater San Diego County



Farmland (FMMP 2016)

- Farmland of Local Importance
- Prime Farmland
- Unique Farmland
- Urban and Built Up Lands
- Grazing Land
- Farmland of Statewide Importance
- Water
- Other Land
- Anza Borrego Desert State Park



To participate, contact:

Joel Kramer (RCD)

joel.kramer@rcdsandiego.org

619-562-0096

Planning Grants

Developing and implementing plans for ag land protection from conversion

Eligible applicants

Cities, counties, LAFCOs, California Native American Tribes, COGs, municipal planning organizations, regional transportation planning or groundwater sustainability agencies, special districts with land use or transportation planning authority.

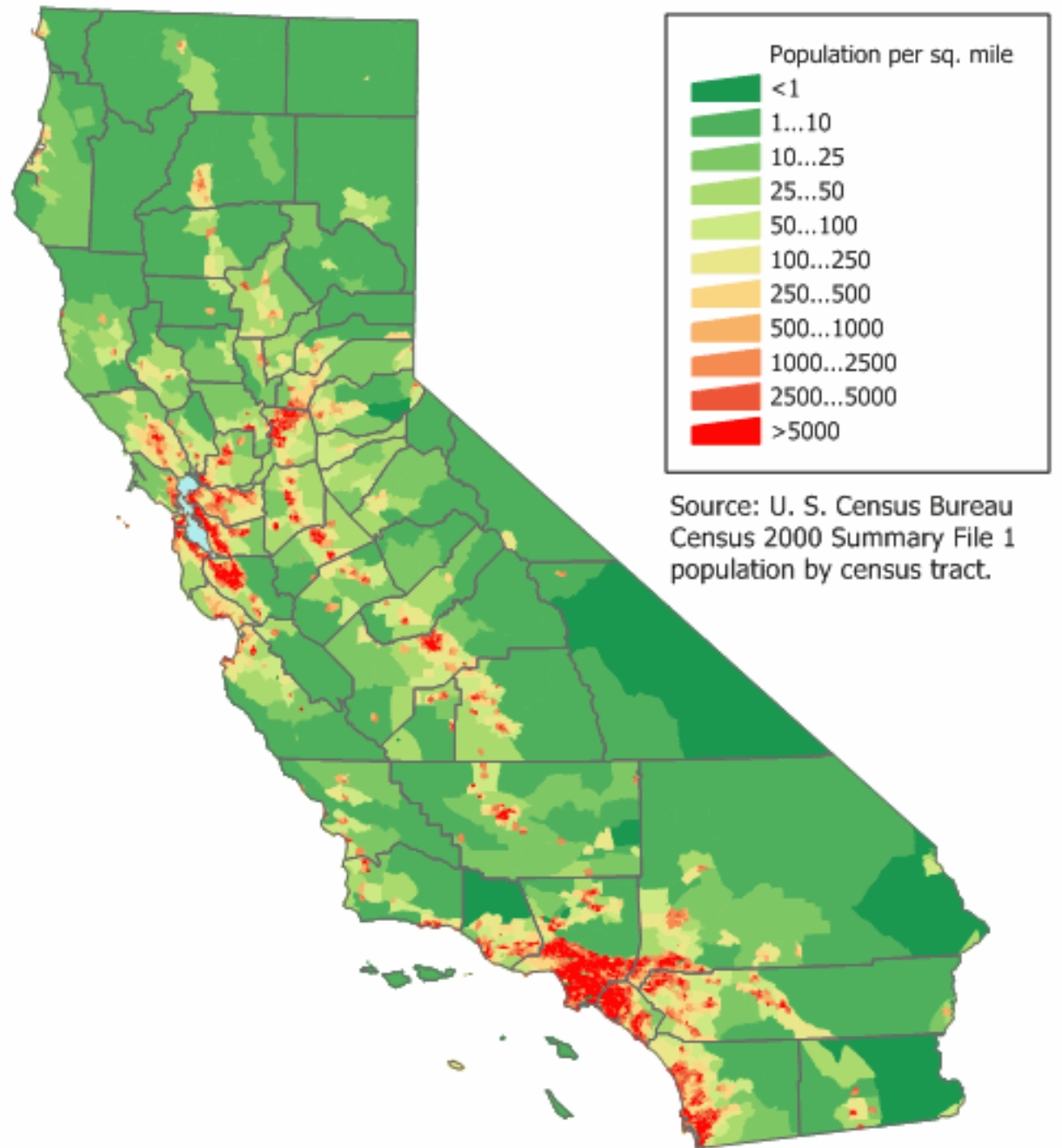
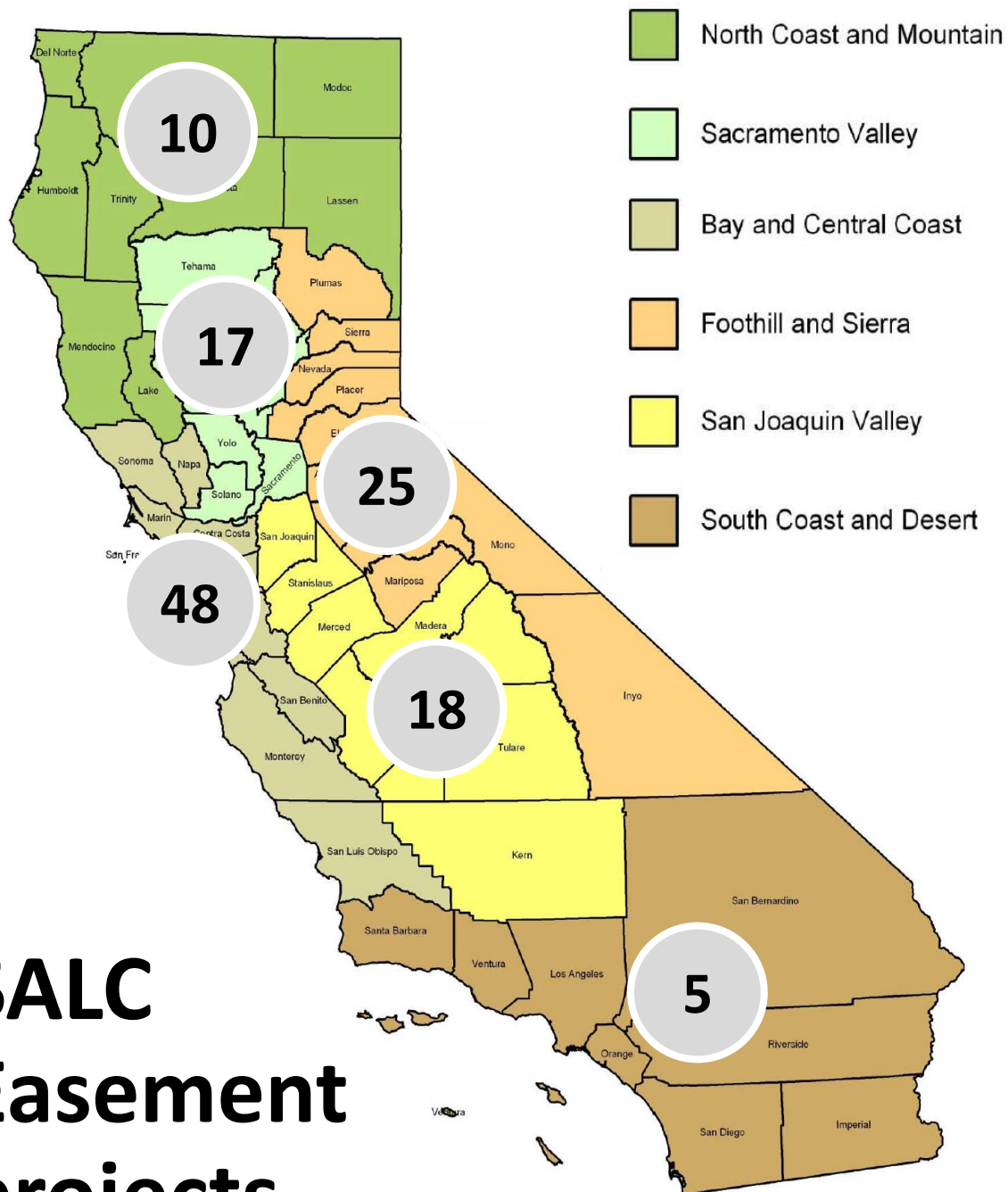
Timeline

July 1: Pre-proposals are due.
September 10: Full proposals are due.
November/December: Project awards are released at the Strategic Growth Council public meeting.

Grant award

- \$250K for one applicant
- \$500K for two or more applicants with extensive outreach community engagement or infill housing planning elements
- 10% match

SALC Easement projects



Why enter into a conservation easement?

Land remains
permanently
protected

Leave a legacy
of
conservation

Protect
natural
resources

Maintain value
as habitat,
open space

Retain private
ownership

Keep the
property
intact

Long-term
investment
gain

Income tax
deductions

Prevent future
development

Acquisition Grants

Supporting landowners to permanently protect their agricultural lands

Eligible applicants

Conservation buyer: cities, counties, non-profit organizations, RCDs, California Native American Tribes, regional park or open space districts and authorities. In collaboration with landowner.

Timeline

June 1: Pre-proposals are due.
September 10: Full proposals are due.
November/December: Project awards are released at the Strategic Growth Council public meeting.

Grant award

- 75% of the appraisal value (ex. averaging \$5,800/acre) or 100% if socially-disadvantaged farmers and ranchers
- \$50,000 for real estate associated costs
- \$10,000 for a carbon farming plan or management plan

Easement project in Calexico, CA

THE
TRUST
FOR
PUBLIC
LAND



Award
\$3,390,000



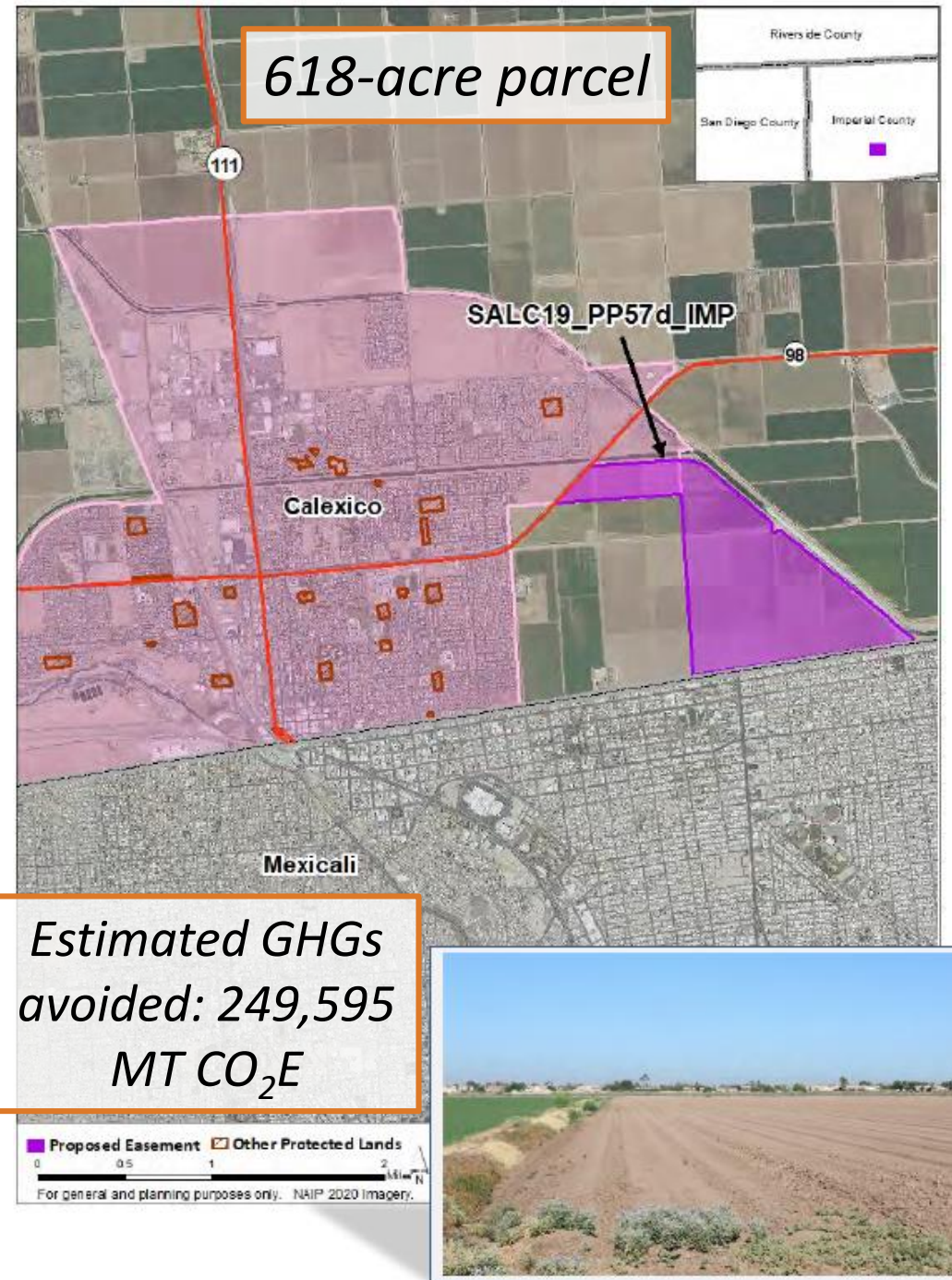
100 acres prime farmland; organic mixed greens sold at various markets



Greenbelt on eastern edge and between US and Mexico dense neighborhoods



Prevent the ranch from being urbanized



Brazelton Ranch in Vacaville, CA



178 acres irrigated, 72 acres of stone fruits, and 40 acres of other orchards

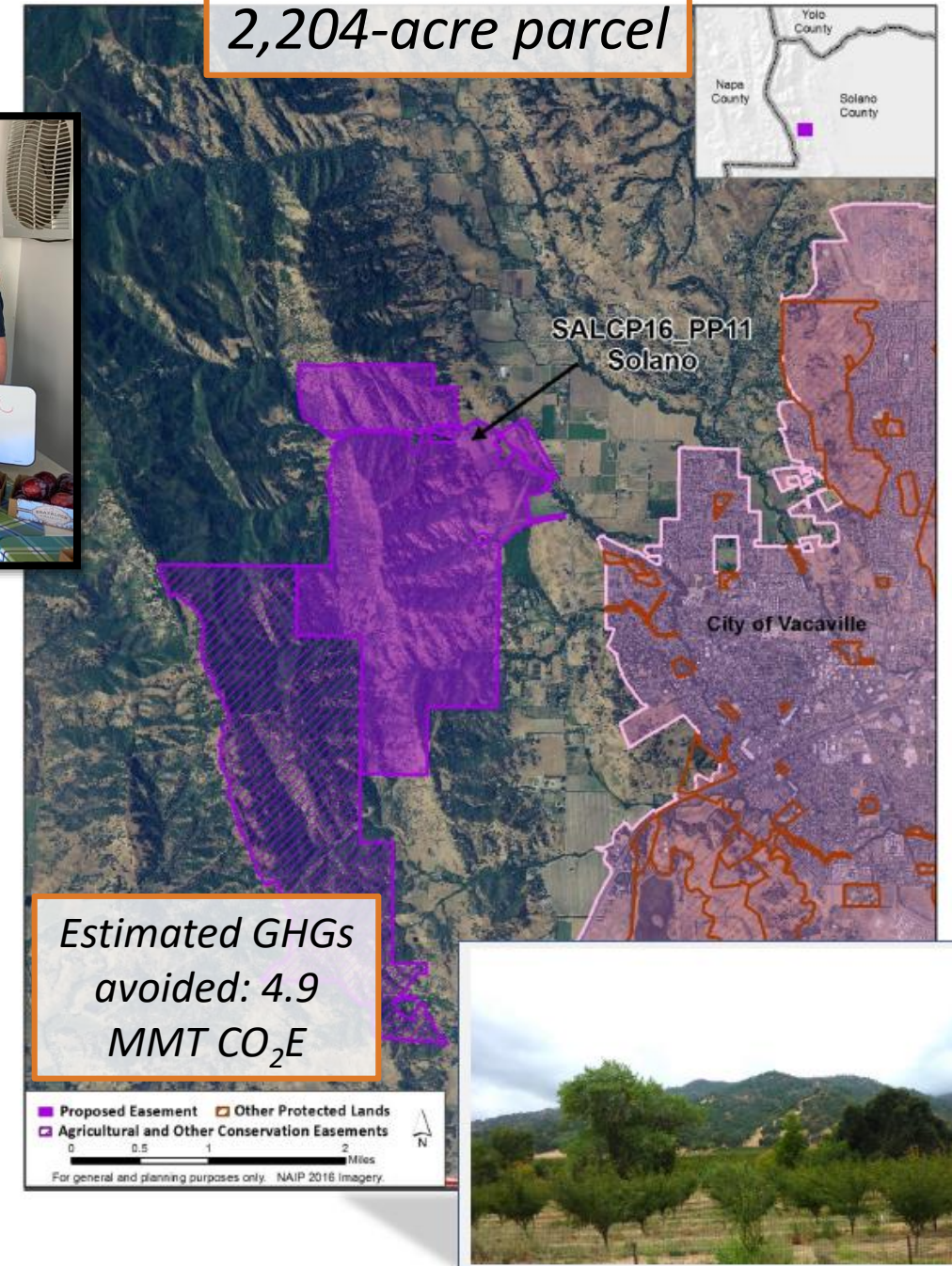


Adjacent to 1900+ acres of protected land and home to multiple habitats



Prevent urbanization and reunite the family ranch to one owner

2,204-acre parcel



How can you support SALC?

Amplify
agricultural
sustainability

Identify regional
barriers &
opportunities

Connect me
with interested
applicants

Spread the
word

Please contact us if you are interested in applying to SALC!
Thank you!



Cristina Murillo-Barrick, MS, MA

cmurillo@ucanr.edu

559-458-6193

*serving Southern San Joaquin
Valley region*



Dr. Chandra Richards

cmrichards@ucanr.edu

619-786-2620

*serving Southern
California region*



**California Department of
Conservation**

salc@conservation.ca.gov

916-324-0850