

**San Diego Association of Governments
Otay Water District San Miguel Habitat Management
Area Perimeter Fencing Restoration and Threat
Reduction Project
Otay Water District
Quarterly Progress Report
Reporting Period: April 21, 2023 – June 30, 2023
Submission Date: July 20, 2023
SANDAG Contract Number: S1125497**

Quarterly Status Report Overview

PLEASE DO NOT CHANGE OR ALTER THE FORMATTING OF THIS DOCUMENT!

SANDAG has developed a standardized grant monitoring and tracking program for the Environmental Mitigation Program (EMP) Land Management Grant Program. The purpose is to collect information on individual projects and the grant program as a whole for reporting to the Regional Habitat Conservation Taskforce, SANDAG Policy Advisory Committees, and the SANDAG Board of Directors. SANDAG monitors grantees through invoices, progress reports, performance measures, and designated photograph points. These standardized reporting templates and instructions for submittal are included below.

Work Performed this Period:

1. Task 1- Public Outreach & Education Campaign

Task 1 was initiated on May 2, 2023. Approximately 16% of the task is complete.

Activity A. Agency Coordination. The District initiated coordination with the Preserve Manager of the adjacent U.S. Fish and Wildlife Service (USFWS), San Diego National Wildlife Refuge (SDNWR) during preparation of the grant proposal and will follow-up in the 2nd quarter to discuss trail users illegally entering District property from the USFWS SDNWR land. The District had received permission to place signage that the HMA is closed to trail users on the SDNWR trail leading to the HMA. Follow-up coordination with USFWS and San Diego Gas & Electric (SDG&E) is still required.

Activity B. Trail App Coordination. M&A researched the AllTrails app. (i.e., app which displays trails through District Property) and the OpenStreetMap data collection process and determined that the trails through the District property cannot be removed from the AllTrails app but they can be reclassified as "Private". M&A submitted a request to OpenStreetMap that they reclassify all trails on District property as "Private". M&A confirmed on May 25 that all but one trail (small segment in the north of the District's Property, at Illegal Entry Point North 2b) has been reclassified as "Private". M&A will submit another request to reclassify the remaining trail as "Private".

Activity C. Flyer Reproduction and Community Outreach. The District and M&A discussed the flyer and community outreach opportunities during a meeting on May 26. The purpose of the flyer and outreach is to inform the community of the District lands, its sensitive resources, and reiterate that the District's HMA is private property and trespassing is prohibited. It was determined that community outreach opportunities include: 1) participation at local HOA meeting(s) (District to obtain a schedule of HOA meetings), 2) participation in District community event(s) (District to determine the schedule of upcoming community events), and/or 3) participation in San Diego Mountain Biking Association (or similar) meeting. M&A initiated preparation of the community outreach flyer on June 5. M&A expects to submit the final flyer to the District for review and approval by July 31. The flyer will be provided to the local community via at least the three community events listed above. In addition, the District and M&A discussed the potential to create a designated San Miguel Habitat Management Area (HMA) page on the District's website. The page would include the flyer and other information about the HMA.

Activity E. Retired Volunteer Service Patrol. No activity this quarter.

2. Task 2- HMA Illegal Entry Deterrence Efforts

Task 1 was initiated on May 2, 2023. Approximately 16% of the task is complete.

EMP Land Management Grants

Quarterly Progress Report Template

M&A ordered five cell-enabled wildlife cameras and security boxes on May 5 and they were received on June 12. The cell-enabled cameras will be deployed as part of the project monitoring effort which would be initiated after completion of the baseline monitoring effort.

The District and M&A discussed the location of where all deterrence efforts would occur during a meeting on May 26. A follow-up field meeting occurred on June 26. Deterrence efforts are expected to include placement of monitoring cameras at the five primary illegal entry points, two upgraded gates, removal of one unnecessary gate and replacement with permanent fencing, minor maintenance to existing gates as needed, placement of boulders at two of the five primary illegal entry points, and placement of cacti at/along four of the five primary illegal entry points. In addition, private security will assist with monitoring.

M&A deployed five baseline monitoring wildlife cameras at the five primary illegal entry points on June 15. The attached Figure depicts where the five baseline cameras were installed: West 1a and West 1b, North 2a and North 2b, and East 3b. The cameras have all been concealed, as best as possible within vegetation near each illegal entry point. Concurrent with this effort, M&A also repaired all breaks in perimeter fencing and reattached District signage as part of the general HMA maintenance requirement. This included repairs at four of the five primary illegal entry points (i.e., West 1a and West 1b, North 2a and North 2b). The baseline monitoring cameras are property of M&A; they capture the same data as the cell-enabled cameras, but they are not cell-enabled. The SIM cards must be retrieved from each camera to download/view the photos. The attached Photo Pages 1 and 2 include before and after photos of the fence repair and installation of the baseline cameras. Upon completion of the baseline monitoring effort, all other deterrence efforts listed above will be installed/initiated.

The District prepared a request for bids from gate companies for two gates and four locks that will be sent out at the beginning of the 2nd quarter.

3. Task 3- Enhanced Site Signage

Task 1 was initiated on May 2, 2023. Approximately 16% of the task is complete.

The District and M&A discussed the location of where enhanced site signage will be installed during a meeting on May 26. M&A expects to submit the final language for the enhanced site signage to the District for review and approval by July 31.

4. Task 4- Camera Trap Monitoring

Task 1 was initiated on May 2, 2023. Approximately 10% of the task is complete.

The baseline camera trap monitoring was initiated on June 15. M&A conducted a site inspection on June 16; all cameras were still in place but breaks in the repaired

EMP Land Management Grants

Quarterly Progress Report Template

fencing were noted at Illegal Entry Point North 2a and 2b. M&A conducted a site inspection on June 26; the camera at West 1a had been stolen and all repaired fencing was cut/damaged. M&A conducted a site inspection on June 27 and downloaded photos from the four remaining baseline cameras. The attached Photo Page #3 includes images captured on the baseline cameras. Below is a summary of illegal trail users captured on camera:

- West 1a – Fencing repaired and cameras deployed on June 15 by 9:06am. Camera inspected on June 16 and no issues noted. Camera inspected on June 26 and camera gone and fencing cut.
- West 1b – Gate repaired and cameras deployed on June 15 by 9:21am. Illegal trail users first captured on camera on June 15 at 5:57pm (3 bicyclists).
- North 2a – Fencing repaired and cameras deployed on June 15 by 11:32am. Illegal trail users first captured on camera on June 15 at 6:33pm (4 bicyclists). The camera detected users cutting the fence.
- North 2b – Fencing repaired and cameras deployed on June 15 by 10:52am. Illegal trail user first captured on camera on June 15 at 7:03pm (1 bicyclist). Based on photo and site inspection on June 16, it is anticipated that the user cut the fence.
- East 3b – No fencing repairs needed and no gate repairs implemented. Camera monitoring initiated on June 15. No illegal trail users have been detected since June 15.

Baseline monitoring will end on August 10. During the baseline monitoring effort, M&A will continue to inspect and download photos. In addition, M&A will evaluate the photos and generate a timeline of illegal entry/activity.

Provide the exact work start date, a description of the work completed under each task, and percent complete. Add additional tasks as necessary

Work Anticipated Next Period

This does not need to be task specific but should include a short paragraph or bullet point list of activities anticipated for next quarter.

- Follow-up coordination with USFWS and SDG&E regarding illegal entry from USFWS lands and installation of new gates/locks along SDG&E easement corridors.
- M&A will submit another request to OpenStreetMap requesting to reclassify the remaining illegal trail as “Private”.
- Finalize community flyer and initiate participation in community outreach events.
- Complete baseline monitoring effort and generate timeline of illegal entry/activity in support of installing all deterrence efforts and initiating project monitoring.
- Contract with gate contractor for installation of gates and locks.

EMP Land Management Grants

Quarterly Progress Report Template

- Coordinate with District's private security company for patrols of HMA at times of maximum illegal entry based on results of baseline camera trap monitoring.
- Install all deterrence efforts (project monitoring cell-enabled cameras, cacti, private security, etc.) and initiate project monitoring.

Issues to Note

Please provide a brief description of any issue(s) encountered during the reporting period and any steps taken to address the issue(s).

- The baseline monitoring camera installed at Illegal Entry Point West 1a was stolen within 11 days of deployment (installed on June 15; inspected on June 15 with no issues noted; inspected on June 26 and camera gone and fencing cut). M&A has not replaced the camera; thus, we are not generating illegal entry/activity data at that location. However, a baseline camera is located at Illegal Entry Point West 1b, which is located upslope and along the SDG&E easement road; we expect the illegal entry/activity to be similar at both locations.
- The remaining baseline cameras captured 1000s of photos, primarily as a result of wind moving vegetation surrounding the hidden cameras. M&A adjusted the sensitivity of camera sensor during the first photo download event on June 27.

Photographs & Figures

Photographs and figures are invaluable! Please include photos in the Quarterly Progress Reports and any figures (if applicable). Both photos and figures may be included throughout the document under corresponding tasks or at the end following the Issues to Note section. Photographs taken at the same place or photographic points (photo-points) can assist SANDAG staff in tracking the project's progress over time.

It is required that **Photographs include:**

- A before and after comparison sequence from the start to the completion of the project for photo points.
- A brief description of the corresponding tasks, date, and activity in the photograph.
- **A copy of each photograph included in the report submitted in a .jpeg or .png file format.**

It is required that **Figures include:**

- A caption with a brief description.

SDMMP Project Page

To receive reimbursement for work conducted within the quarter, submission of Quarterly Progress, Annual, and Final Reports must be added to your project's Project Page on the SDMMP website. Add any necessary photographs to the photo carousel and fill out the photograph information. *Please contact Sarah McCutcheon (smccutcheon@usgs.gov) or Emily Perkins (eperkins@usgs.gov) if you are having trouble accessing or editing your project page.*

EMP Land Management Grants

Quarterly Progress Report Template

Project Performance Measures Instructions

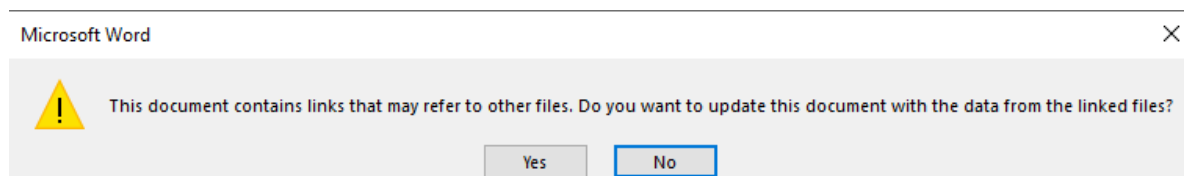
SANDAG will utilize the SANDAG Performance Measures to document compliance with the Project. Grantee's performance will be measured against the Performance Measures (Exhibit D) during the term of the project. More details on Performance Measures and Grant Recovery Plans are outlined in the Grant Agreements.

To access the **Project Performance Measures Excel Spreadsheet**:

- Simply double-click on the Excel icon located under the *Project Performance Measures* section.
 - An excel sheet will open, please fill out and then click save.
- Once the Excel spreadsheet is saved, please exit Excel and the spreadsheet will automatically update the icon in the Quarterly Progress Report Word document.

When opening the document with the **Project Performance Measures Excel Spreadsheet**:

- When you first open the Quarterly Progress Report Template, a warning message will open (image of the warning message below)
 - Click Yes to update the links in the document.

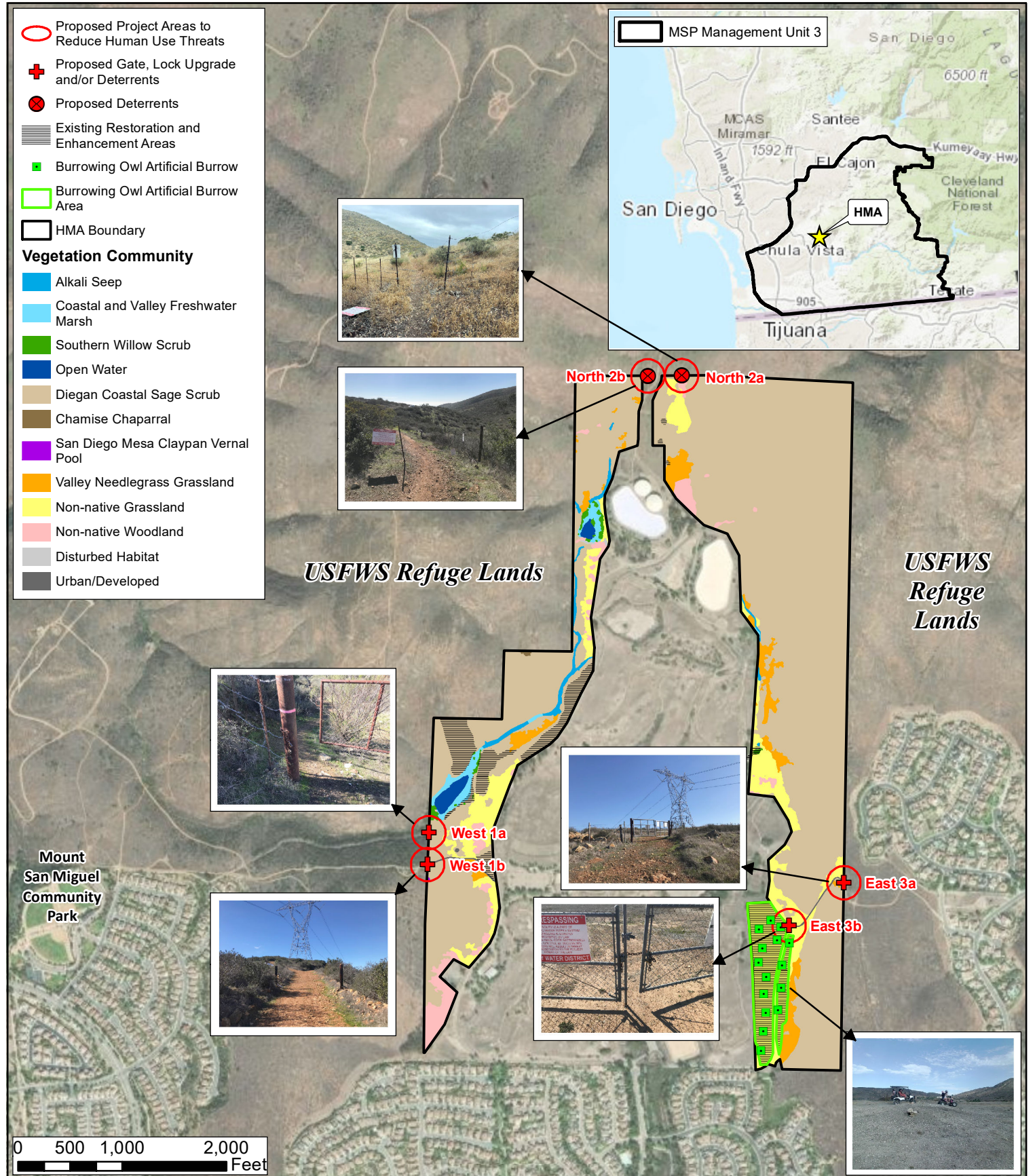


Performance Measures

Please include the Project's Performance Measures for each Quarterly Invoice and Progress Report in order to receive reimbursement.



Performance
Measures- San Migue



Threats Reduction TransNet EMP Land Management Grant - May 2023 Otay Water District San Miguel Habitat Management Area

Photo Page, Baseline Photos During Installation of Baseline Camera Stations



Photo 1 – Illegal Entry Point West 1a. Photo during fence repair. Date: 6/15/23. Time: 7:11am. Photo directed: North toward USFWS lands (beyond the t-posts).



Photo 2 – Illegal Entry Point West 1a. Photo after completion of fence repair and installation of baseline camera (hidden in vegetation on t-post). Date: 6/15/23. Time: 9:06am. Photo directed: West to USFWS lands (beyond the gate).



Photo 3 – Illegal Entry Point West 1b (SDG&E easement). Photo during gate repair (gate is comprised of t-posts and barbed wire fence). Date: 6/15/23. Time: 9:11am. Photo directed: East toward the HMA (beyond the fencing).



Photo 4 – Illegal Entry Point West 1b (SDG&E easement). Photo after completion of fence repair and installation of baseline camera (hidden in vegetation on t-post). Date: 6/15/23. Time: 9:21am. Photo directed: West toward USFWS lands (beyond the gate/signs).



Photo 5 – Illegal Entry Point North 2b. Photo during fence repair. Date: 6/15/23. Time: 9:50am. Photo directed: North toward USFWS lands (beyond the fencing).



Photo 6 – Illegal Entry Point North 2b. Photo after completion of fence repair and installation of baseline camera (hidden in vegetation on t-post). Date: 6/15/23. Time: 10:52am. Photo directed: South toward HMA (beyond the fencing).



Photo 7 – Illegal Entry Point North 2a. Photo prior to fence repair. Date: 6/15/23. Time: 9:55am. Photo directed: North into USFWS lands (beyond the fencing).



Photo 8 – Illegal Entry Point North 2a. Photo after completion of fence repair and installation of baseline camera (hidden in vegetation). Date: 6/15/23. Time: 11:32am. Photo directed: South into HMA.

Photo Page, Photos from Baseline Monitoring Cameras



Photo 9 – Illegal Entry Point East 3b (SDG&E easement road beyond gate). No fence repairs necessary on 6/15/23 and no gate repairs implemented. No trespassers were captured on camera between 6/15/23 and 6/30/23. Date: 6/15/23. Time: 2:17pm. Photo directed: East.

Photo 10 – Illegal Entry Point West 1b (SDG&E easement road). Photo of first illegal trail users captured on the baseline camera after same day deployment (3 bicyclists). Suggests that the repaired gate was removed and reset by the users. Date: 06/15/23. Time: 5:57pm. Photo directed: North.

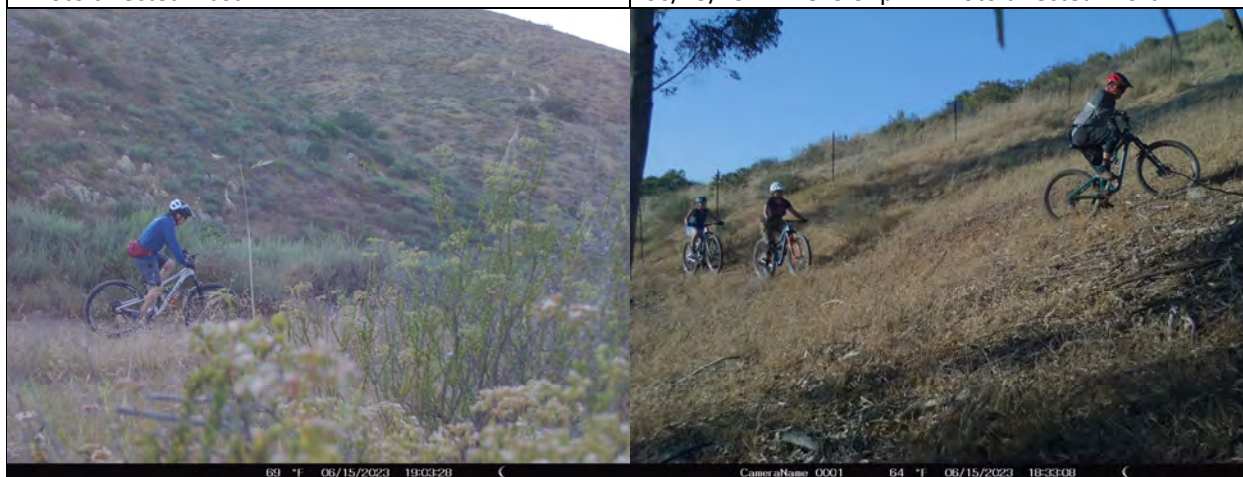


Photo 11 – Illegal Entry Point North 2b. Photo of first illegal trail user captured on the baseline camera after same day deployment (1 bicyclist). Suggests that repaired fencing was cut by this user on this day. Date: 6/15/23. Time: 7:03pm. Photo directed: Northwest.

Photo 12 – Illegal Entry Point North 2a. Photo of first illegal trail users captured on the baseline camera after same day deployment (4 bicyclists). Camera detected users cutting the repaired fence. Date: 6/15/23. Time: 6:33pm. Photo directed: North/northeast.