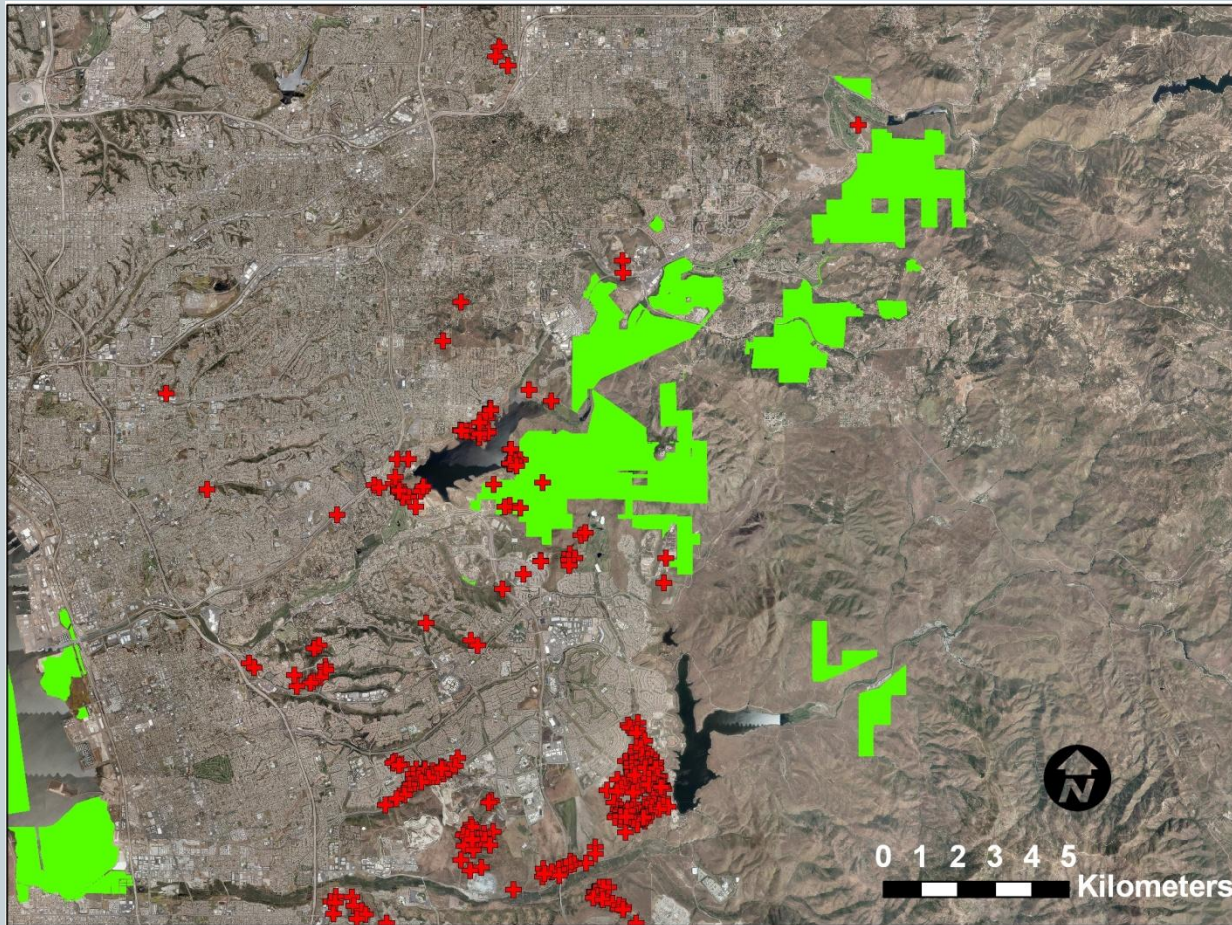


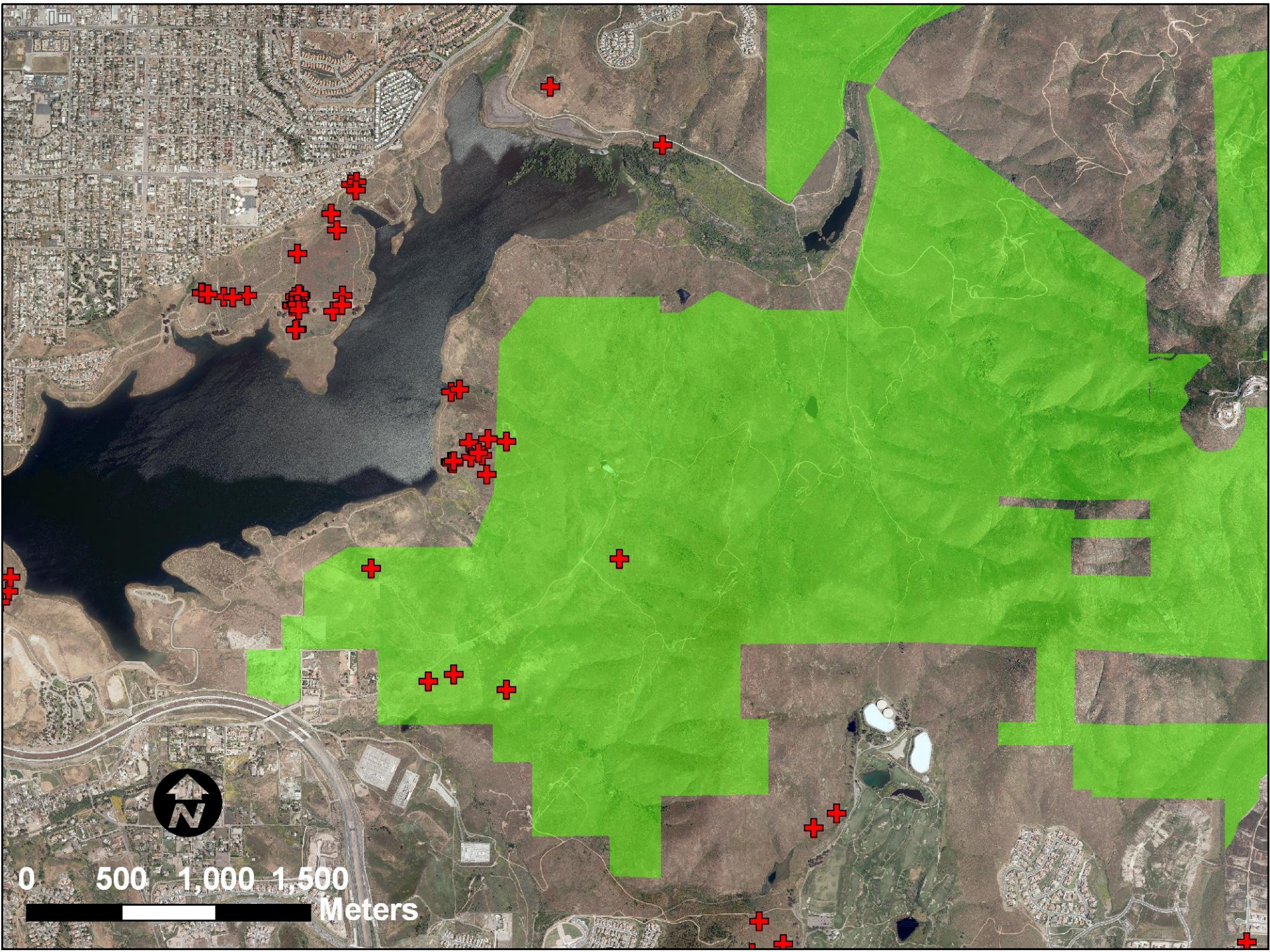
Cactus Wren habitat Restoration



ON SAN DIEGO NATIONAL WILDLIFE REFUGE

Historic distribution of Cactus Wren in coastal southern San Diego





Pre-fire habitat quality



Post-fire habitat











Donor material from Bayshore Bikeway



Planting salvaged cholla joints

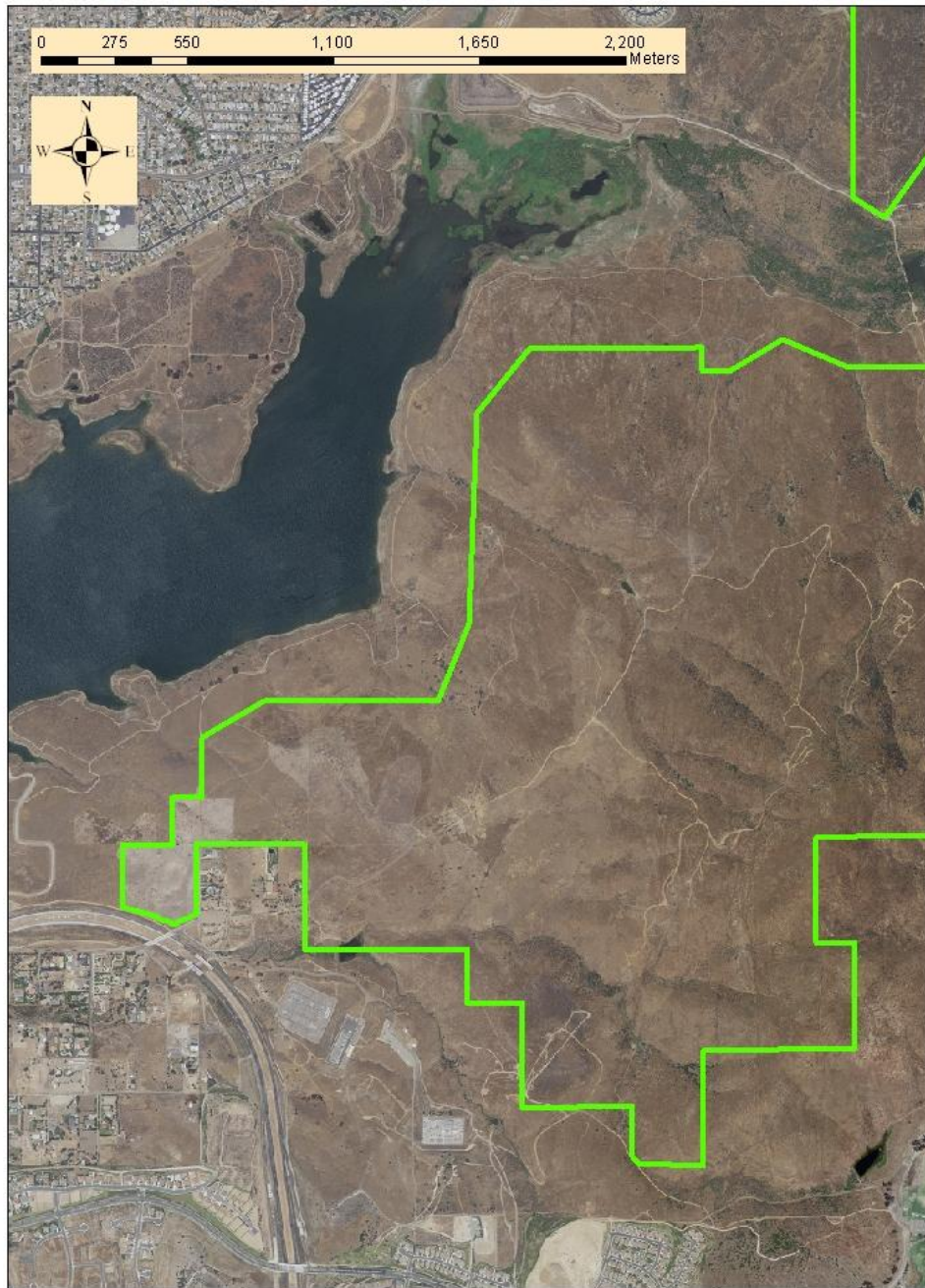


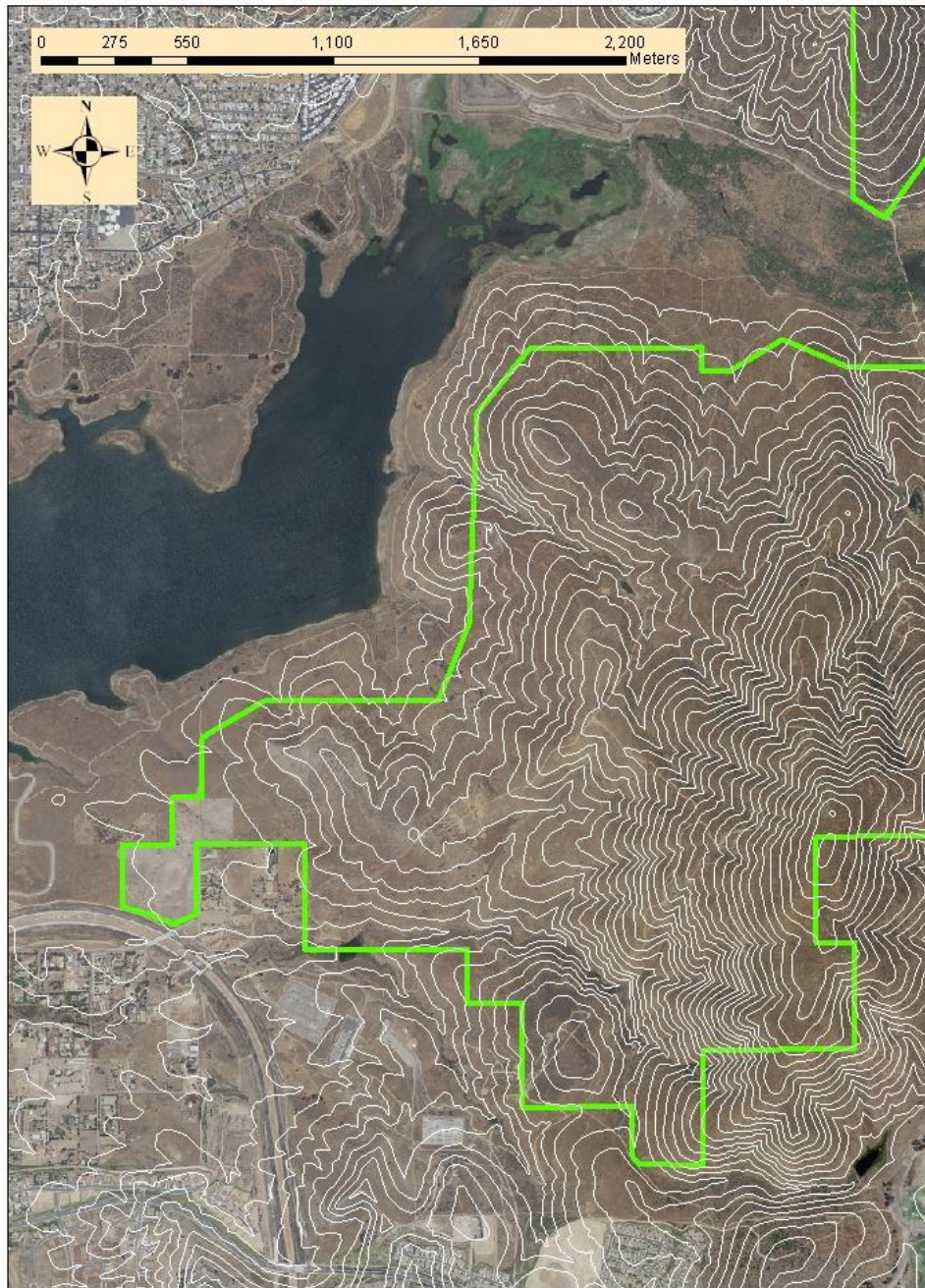
Knees at risk

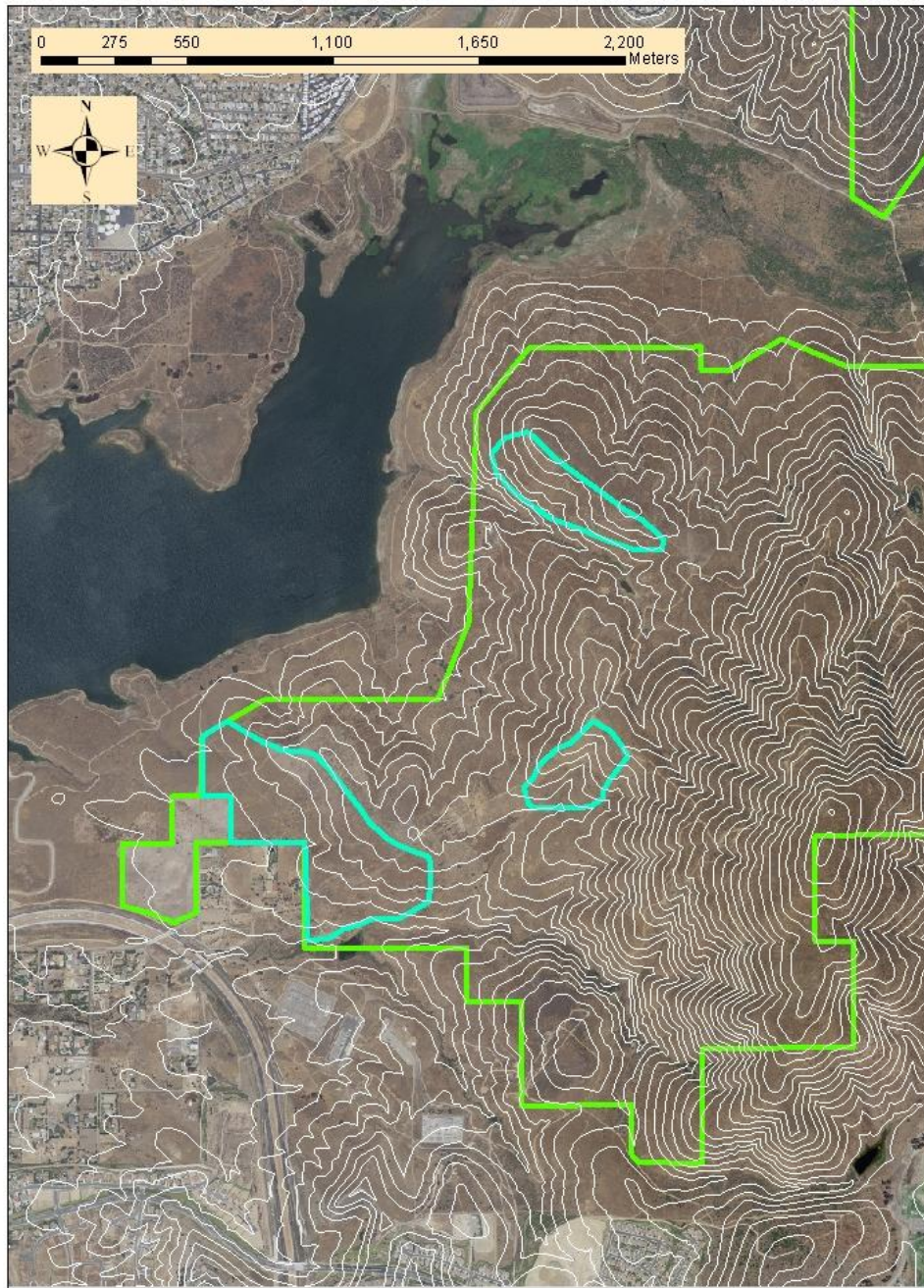


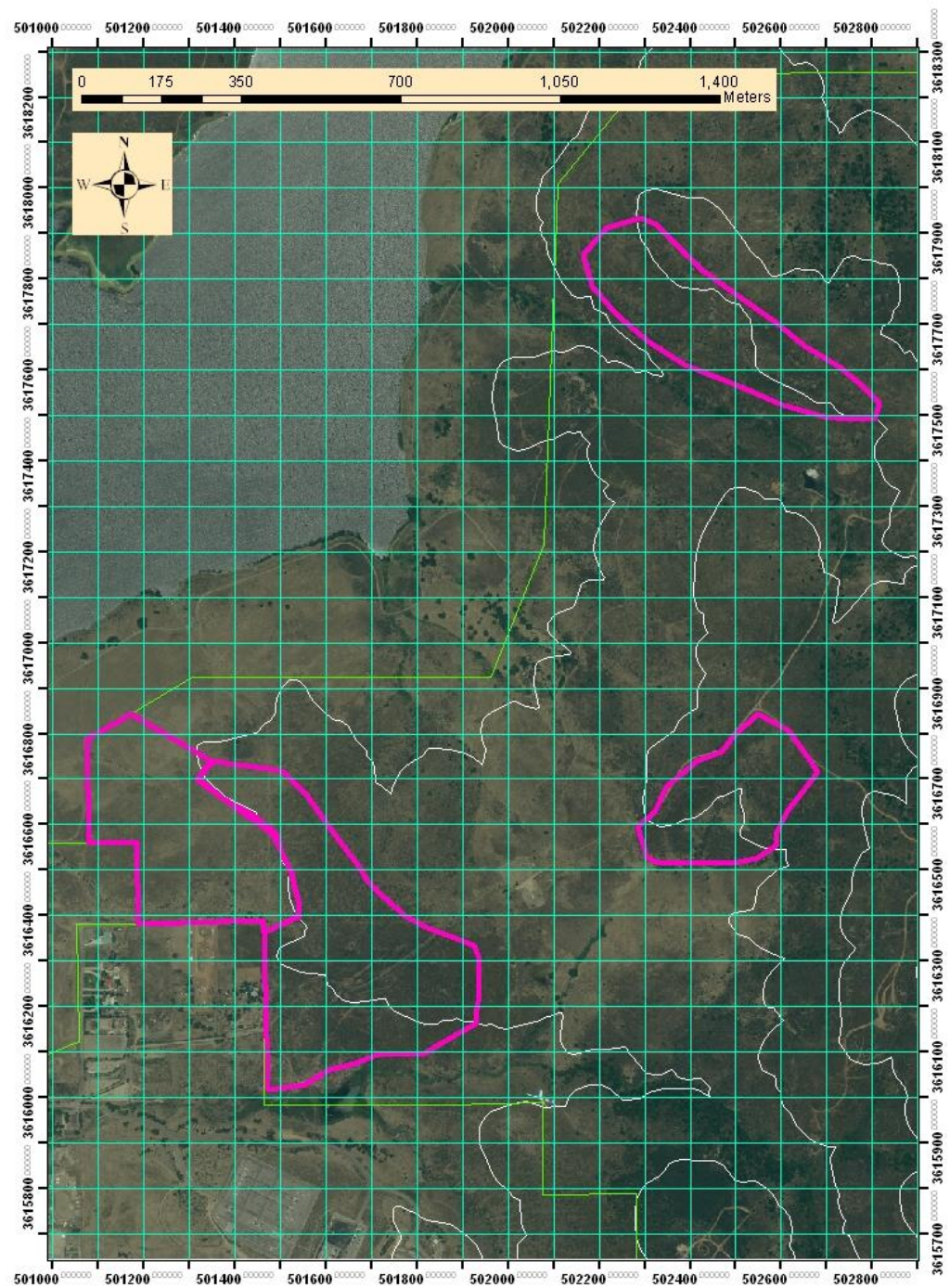
One year later

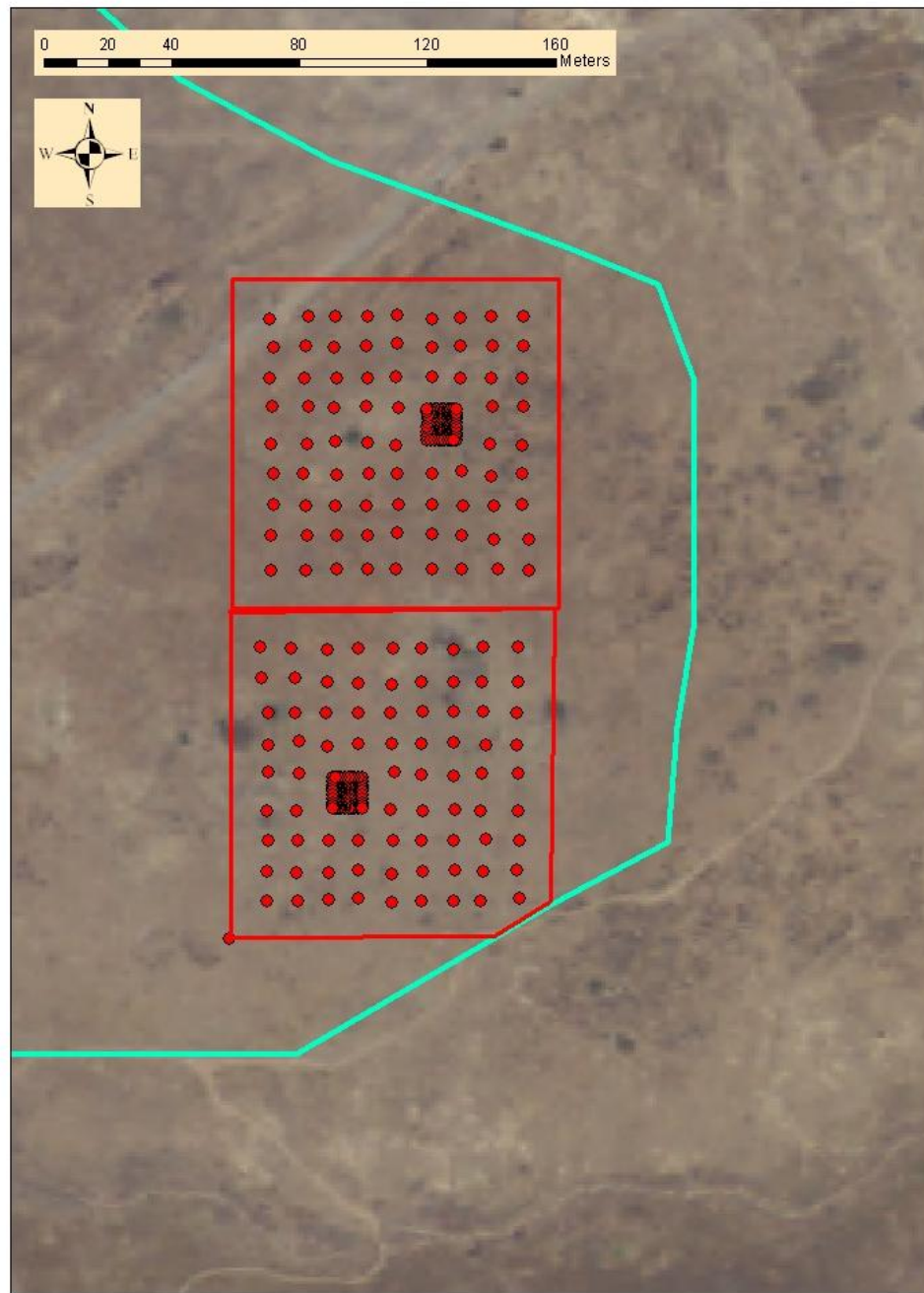














Cactus planted in clusters







Infiltration basin on uphill side



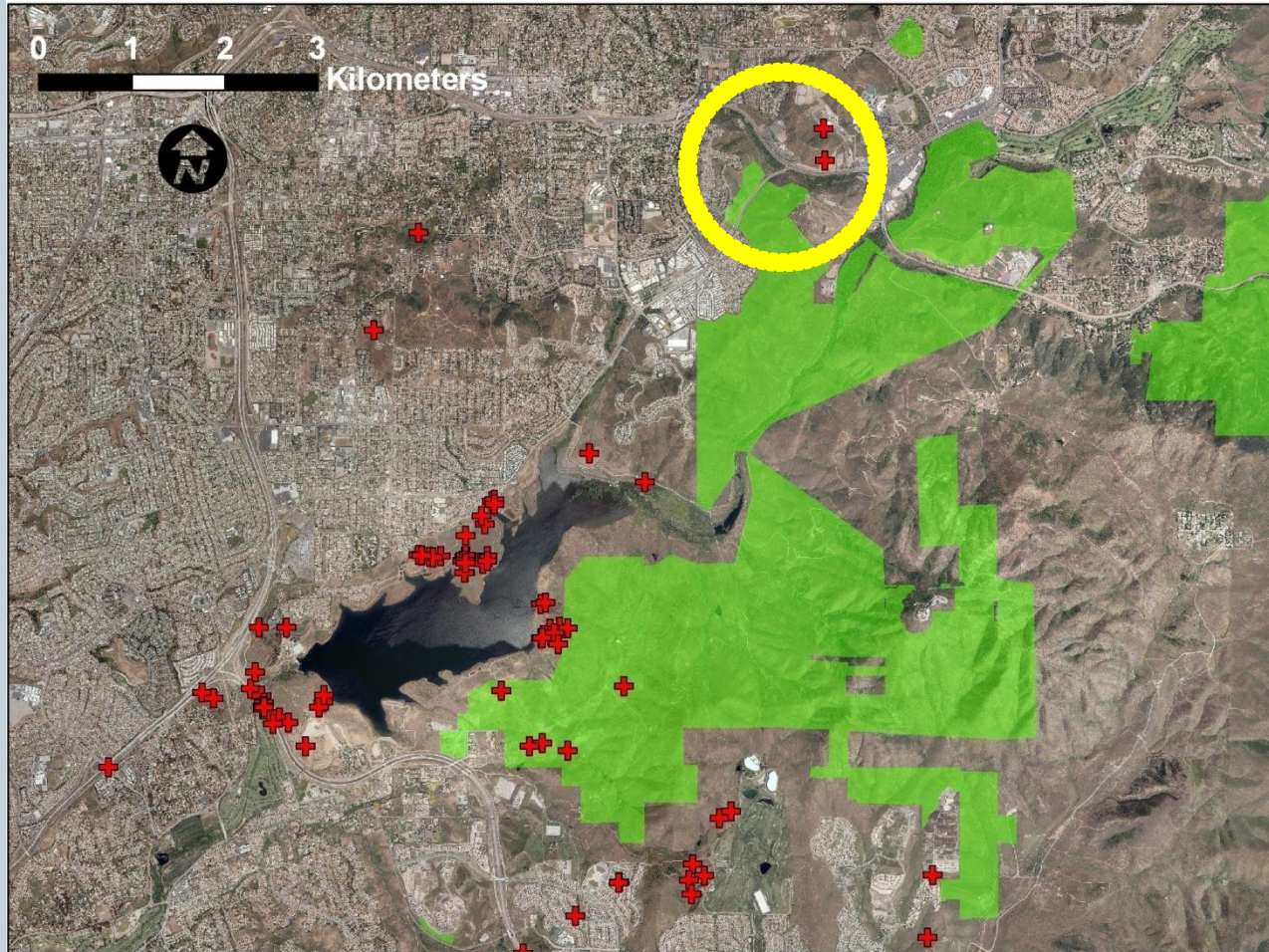
3-4 cm new growth



Opuntia littoralis



Additional planting location







Protect our future colonists!

