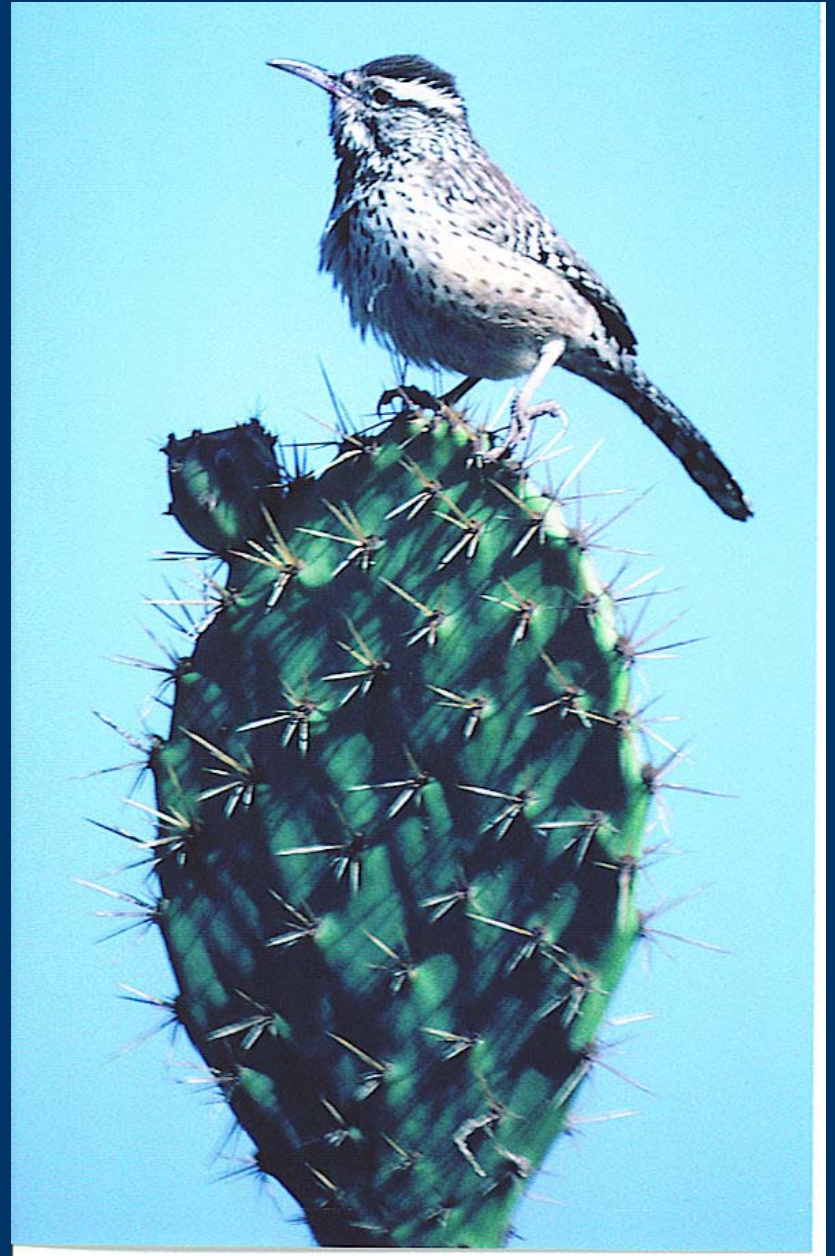
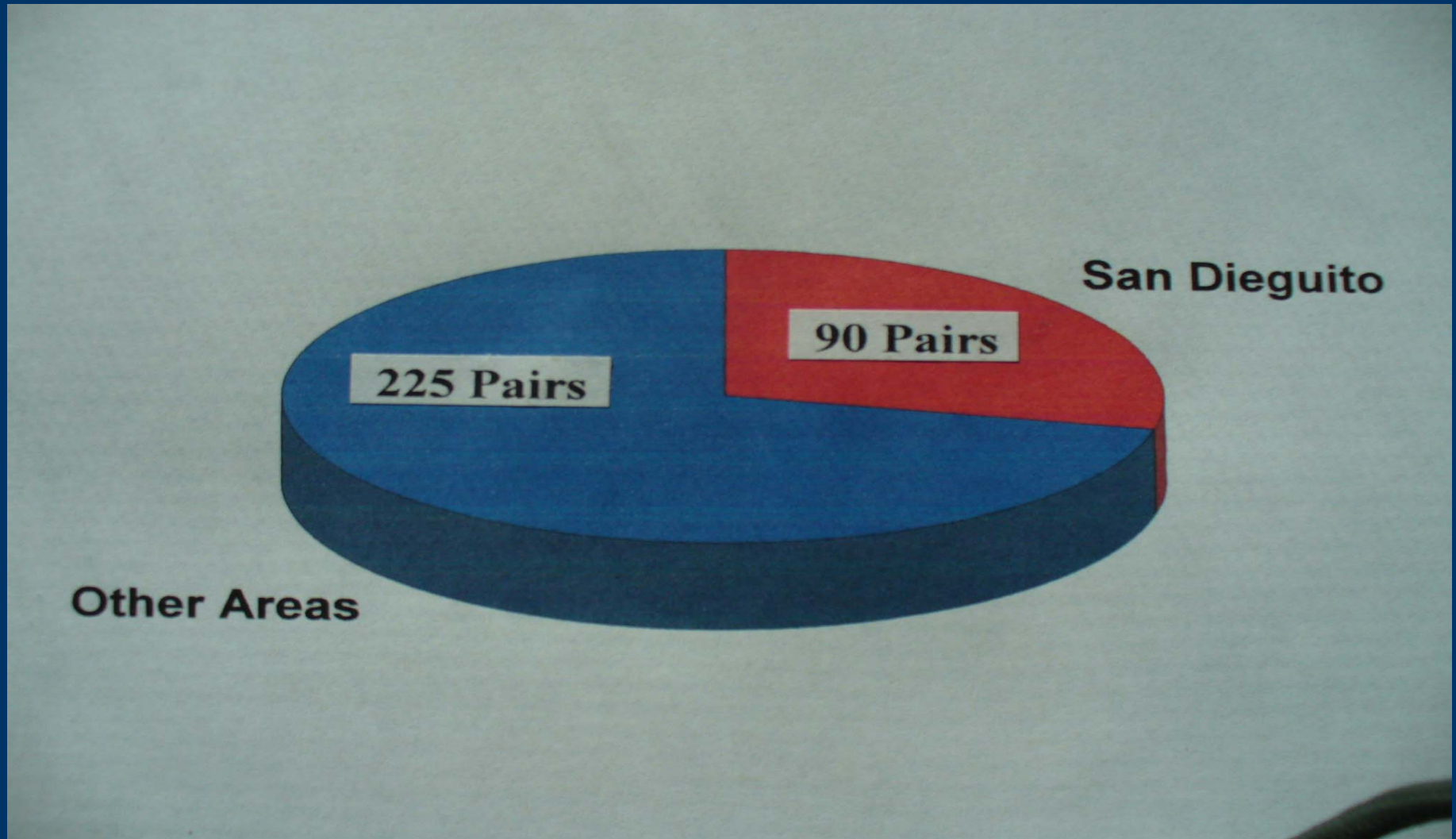


***Cactus Wrens
of the San Dieguito
River Watershed:
Surviving Man and
Fires***



No. of Pairs of Cactus Wrens in San Diego County (Pre-2007 Fires)





Characteristics of Cactus Wren Distribution in Inland Northern San Diego County

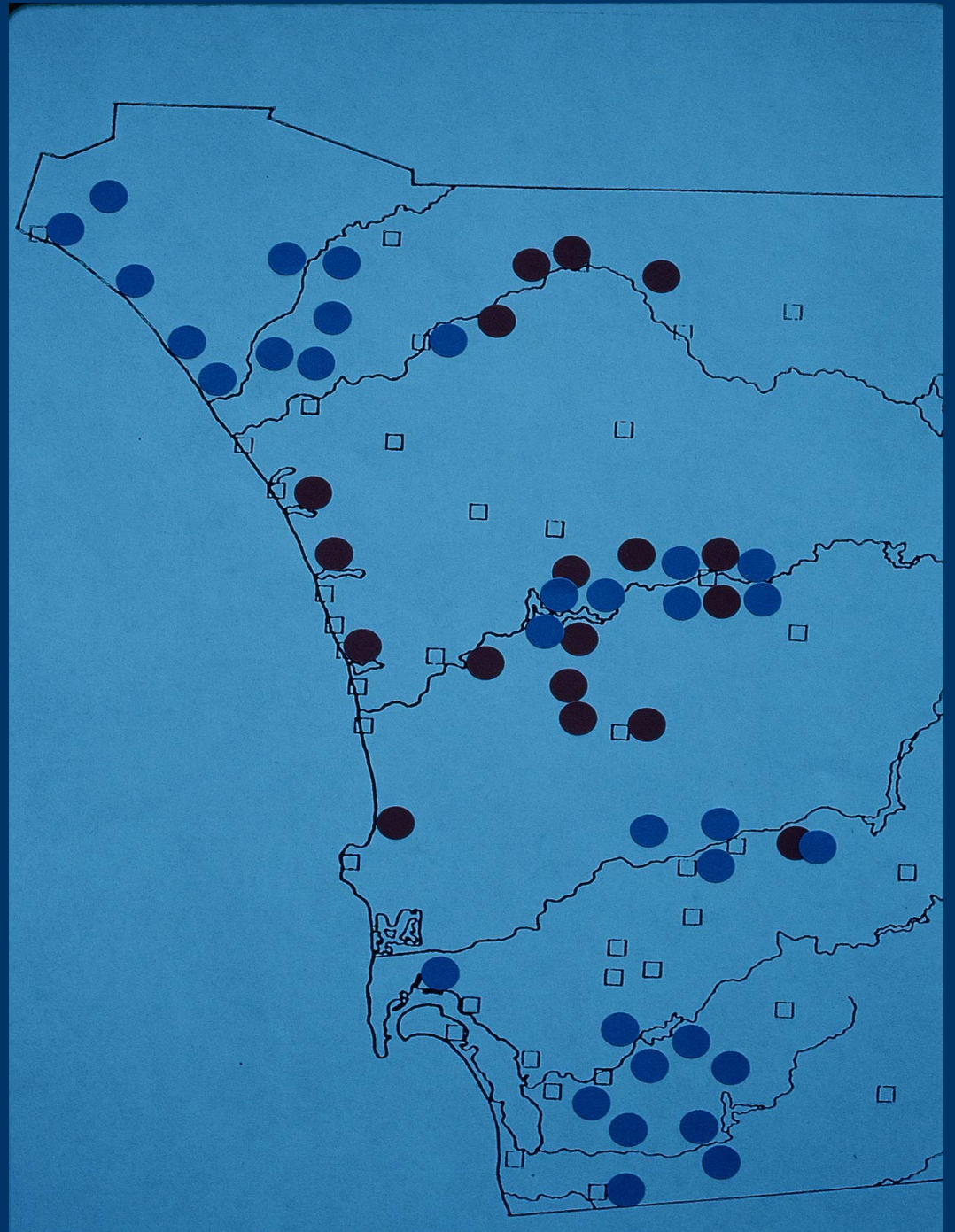
Cactus Wrens are only found where prickly pear patches occur.

Prickly pears are found on south and west-facing slopes above river valleys.

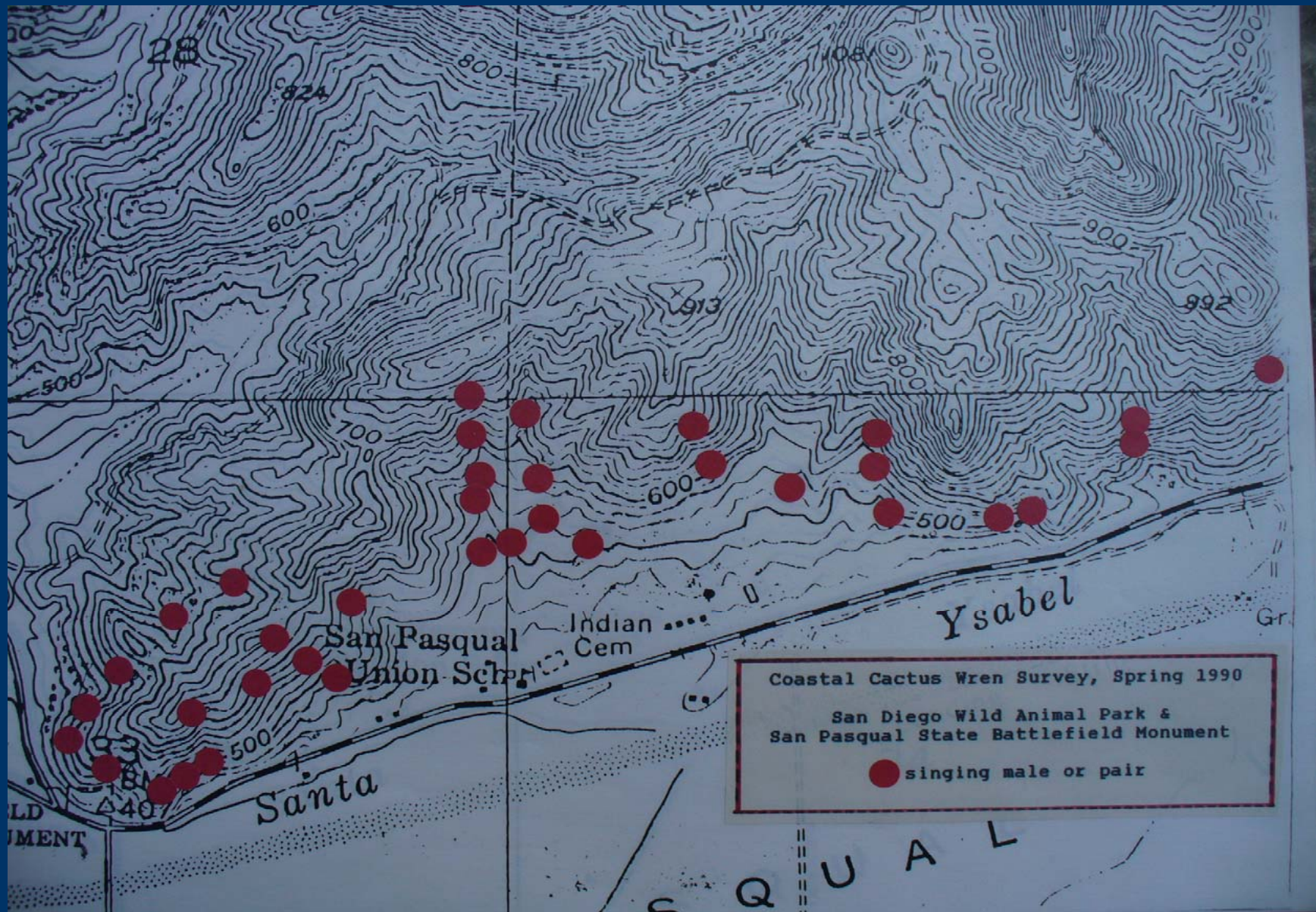
Prickly pears of less than one meter in height are not suitable for placement of Cactus Wren nests

Prickly pears grow primarily on Cieneba series soils which are excessively-drained sandy loams derived from granitic rock.

Coastal Cactus Wrens in San Diego County







No. of Pairs

Battle Monument

Mule Hill

- California Towhee 24
- Cactus Wren 16
- California Quail 13
- Bushtit 4
- No. Mockingbird 4
- Wrentit 4
- Mourning Dove 4

- California Towhee 20
- Cactus Wren 11
- CA Gnatcatcher 8
- California Quail 6
- Bewick's Wren 5







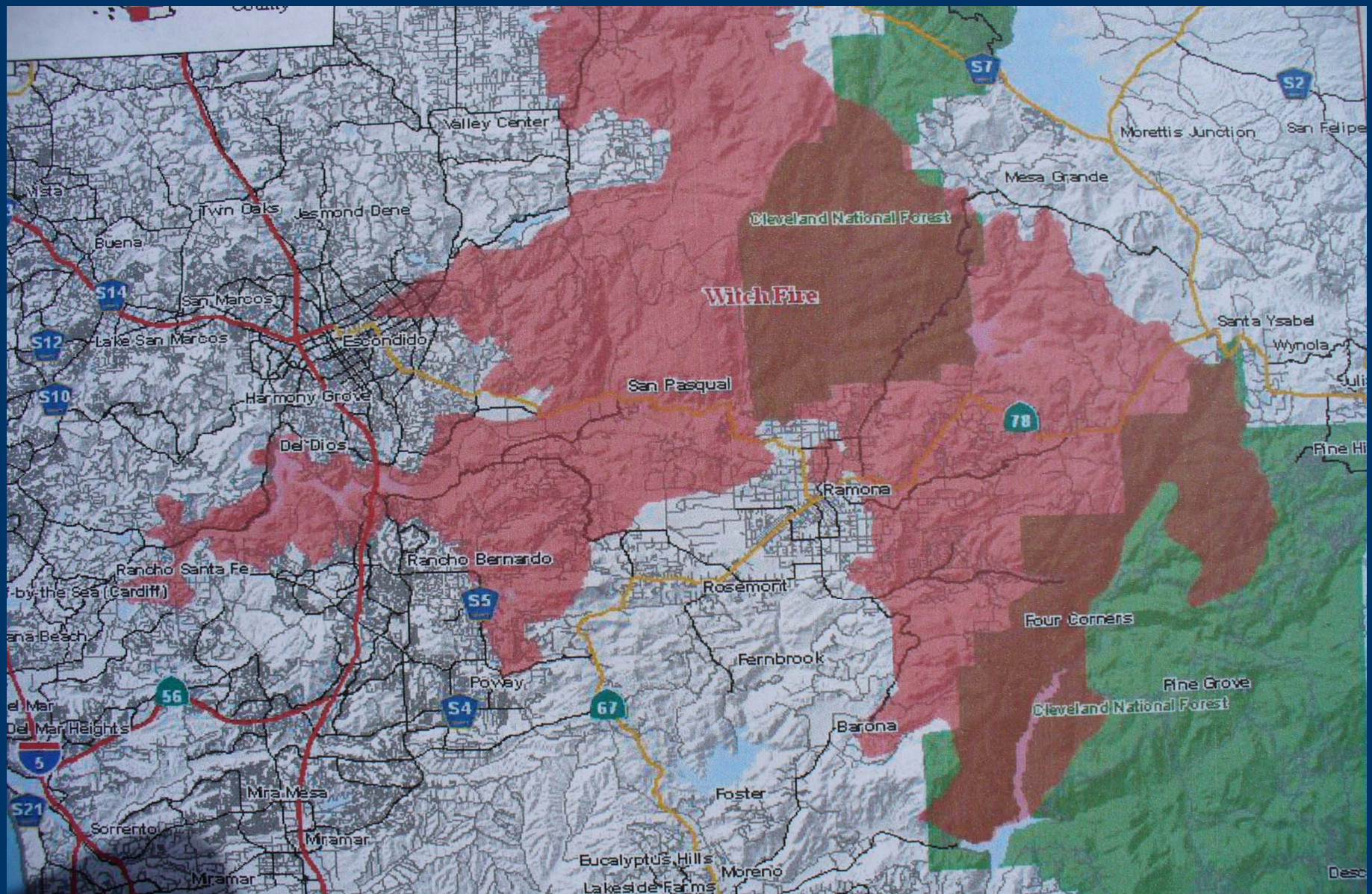


Some “Numbers”

No. of locations where
Coastal Cactus Wrens
have been recorded in the
San Dieguito River Watershed
(1978-1995).....27

No. of locations lost to
development.....10

The Witch-Guejito Fire of 10/2007



















Some More “Numbers”

No. of locations of occurrence (1978-1995)...27

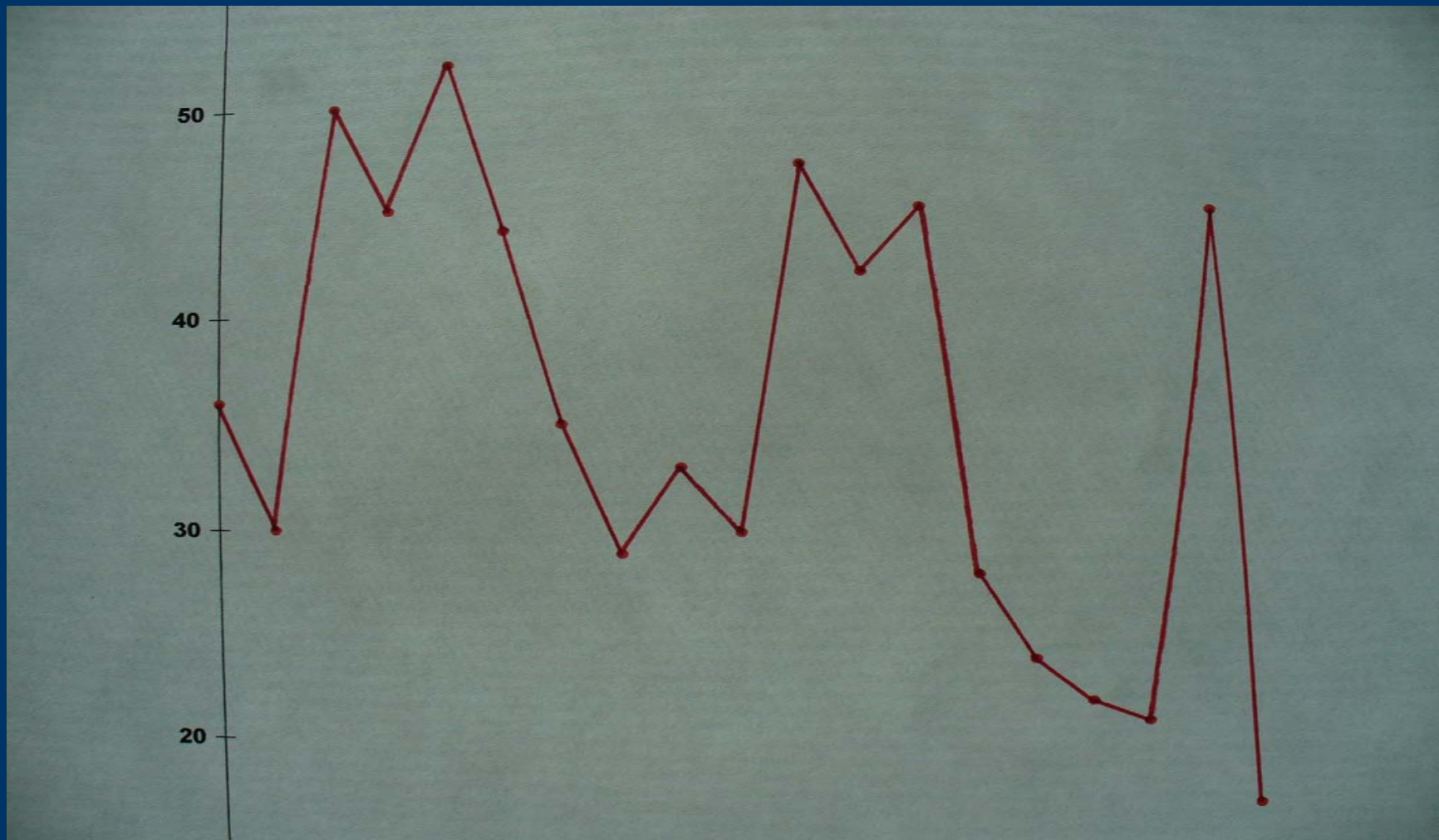
No. of locations now developed.....10

No. of locations burned in
the Witch/Guejito Fire.....13

No. of unburned locations
remaining.....4

No. of pairs affected by the Witch Fire: 75-80
pairs out of a total of approximately 90 pairs

No. of Cactus Wrens Recorded on the Escondido CBC (1990-2007)



Even More “Numbers”

Original no. of sites occupied
by Cactus Wrens.....27

No. of sites where Cactus Wrens
have definitely been recorded since
the fires of October 2007.....5

No. of sites where Cactus Wrens
probably occur since appropriate
habitat still exists.....3















