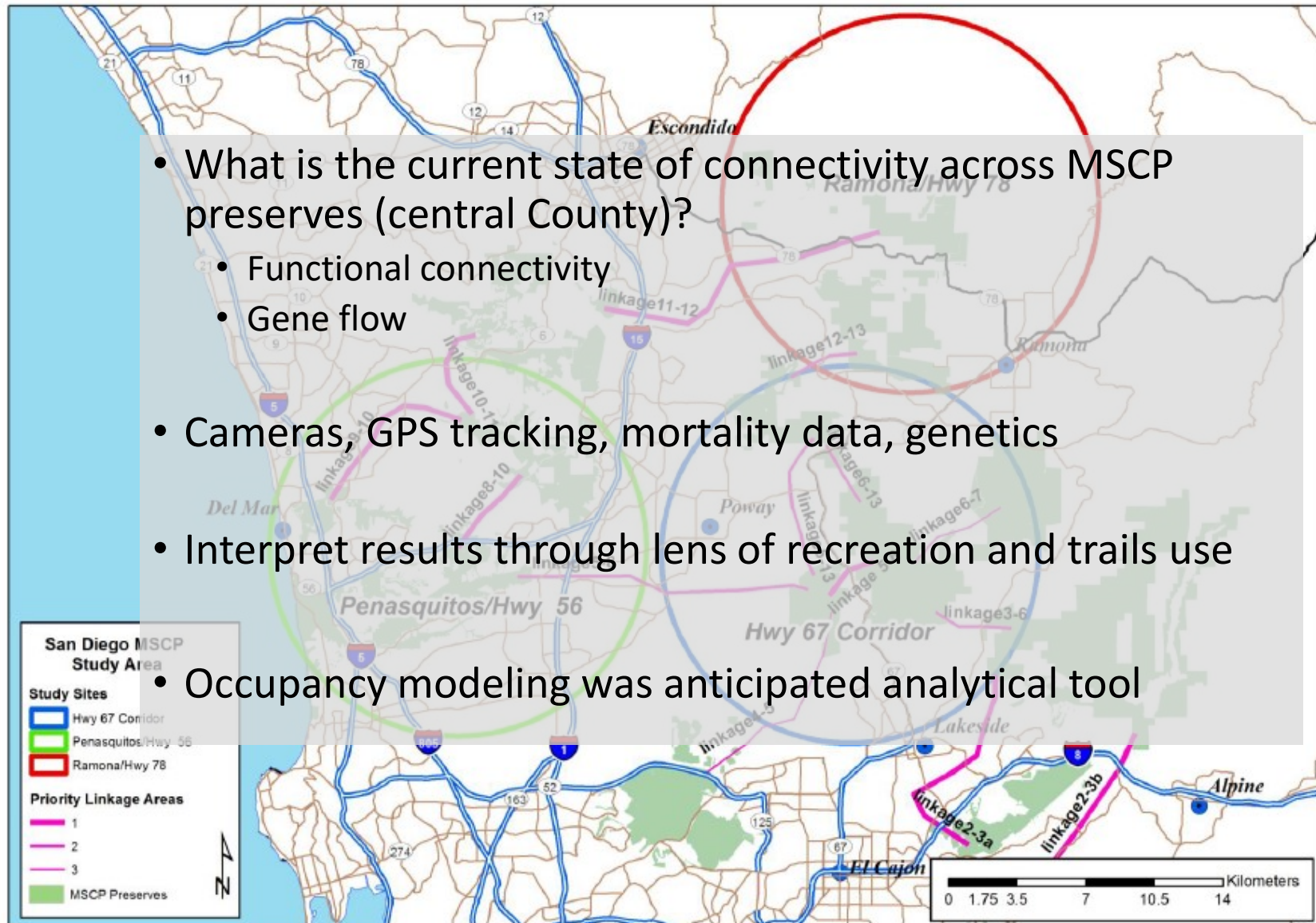


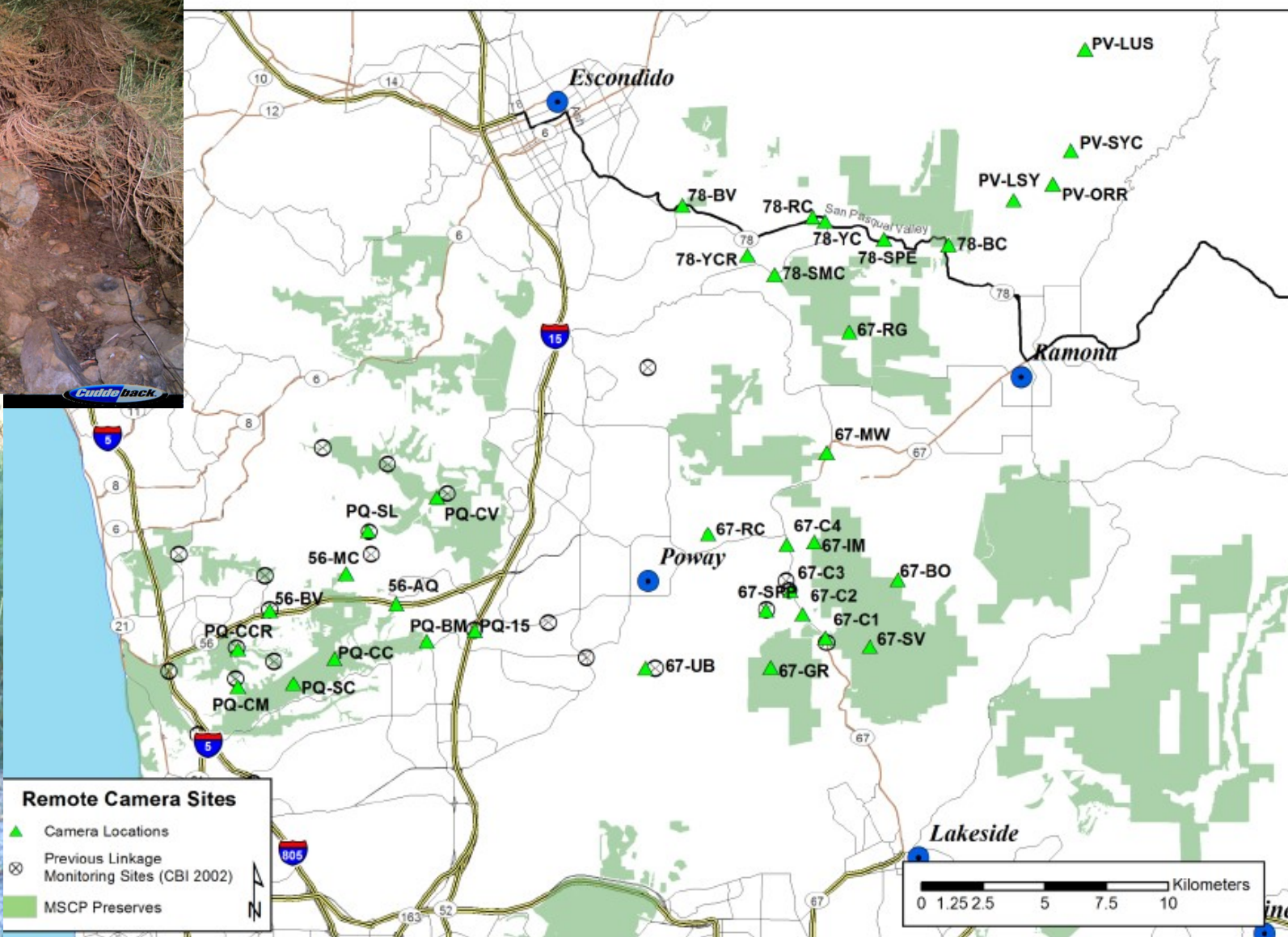
# Camera Trapping for Conservation Decision-Making

Megan Jennings, Ph.D.

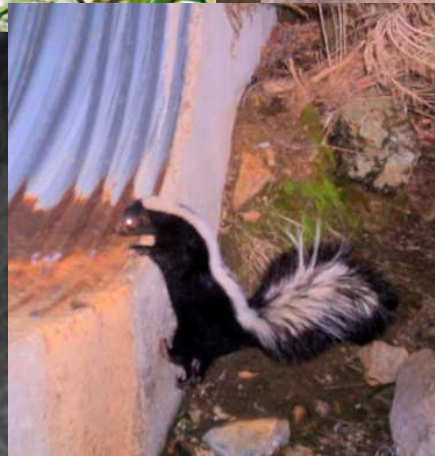














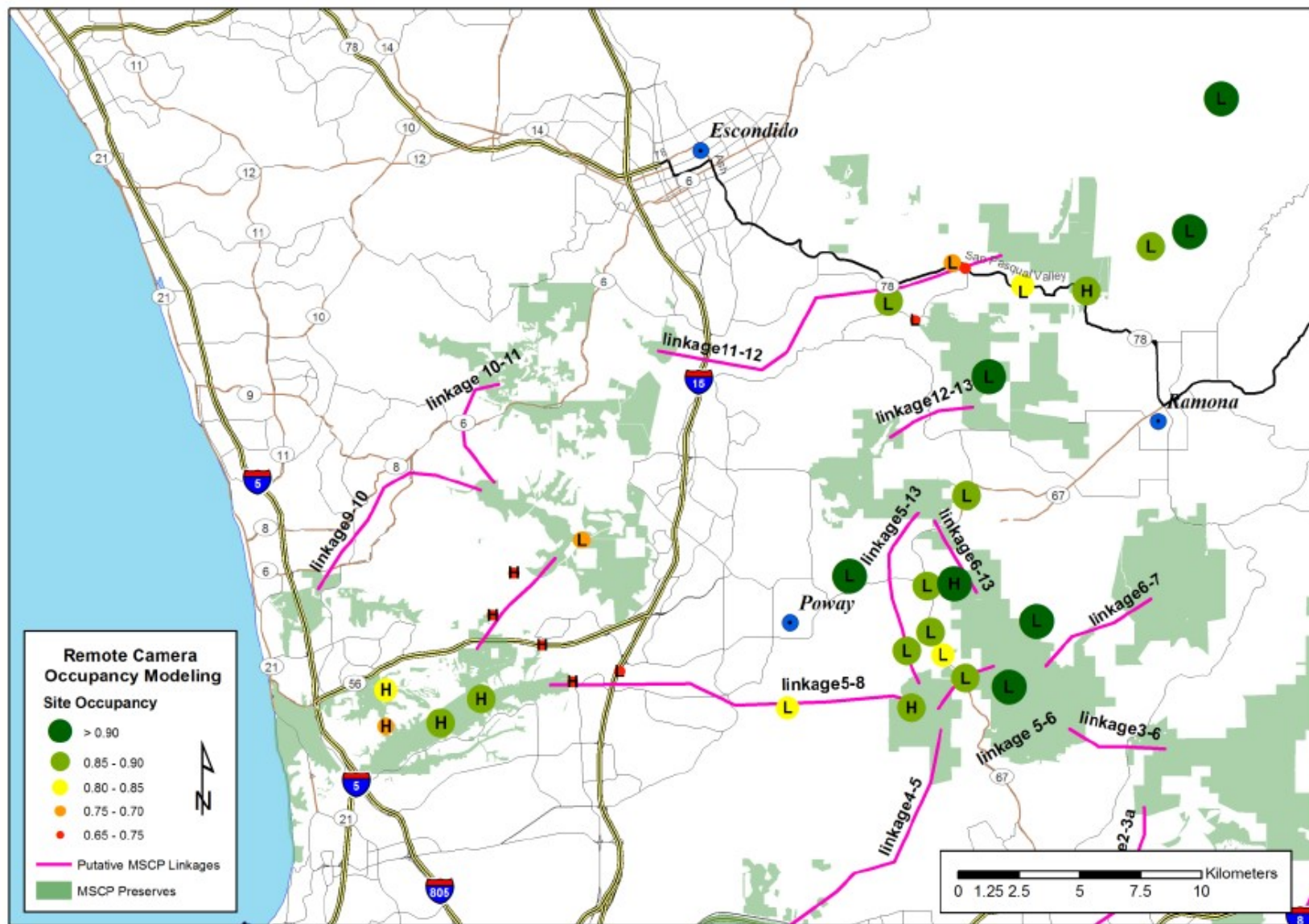
## Occupancy

in linkages  
compared to  
cores

with ↑  
proportion of  
altered  
habitat

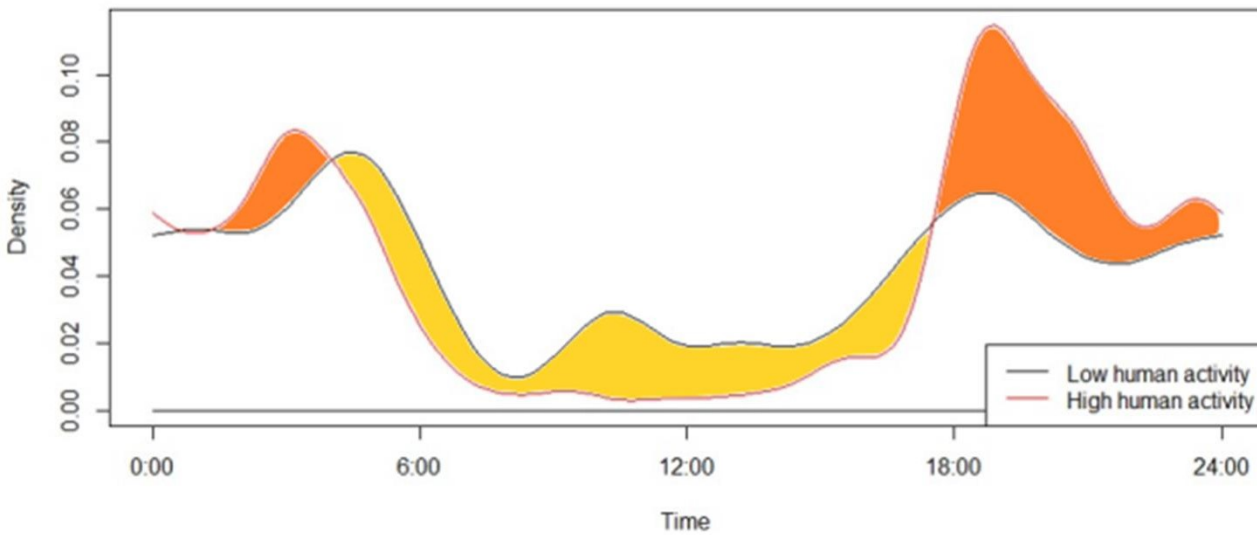
↓ in coastal  
zones  
compared to  
inland

↓ at higher  
recreation sites

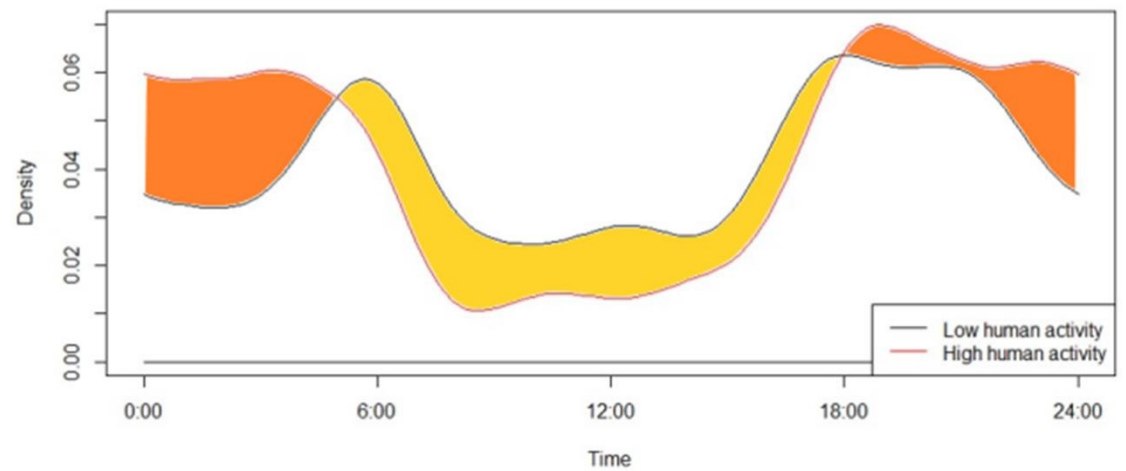




**Bobcat Activity Patterns - Corridors**

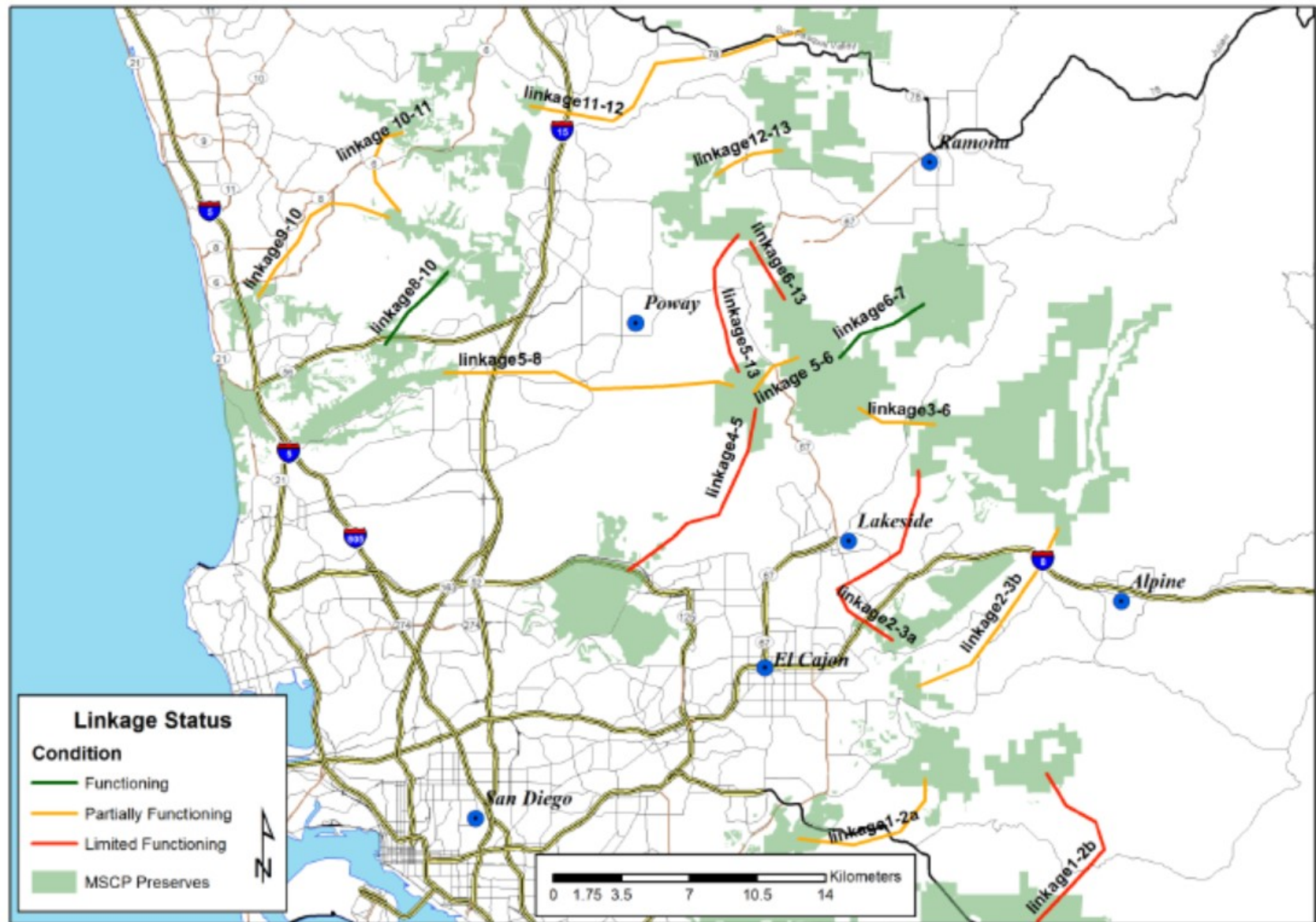


**Bobcat Activity Patterns - Cores**

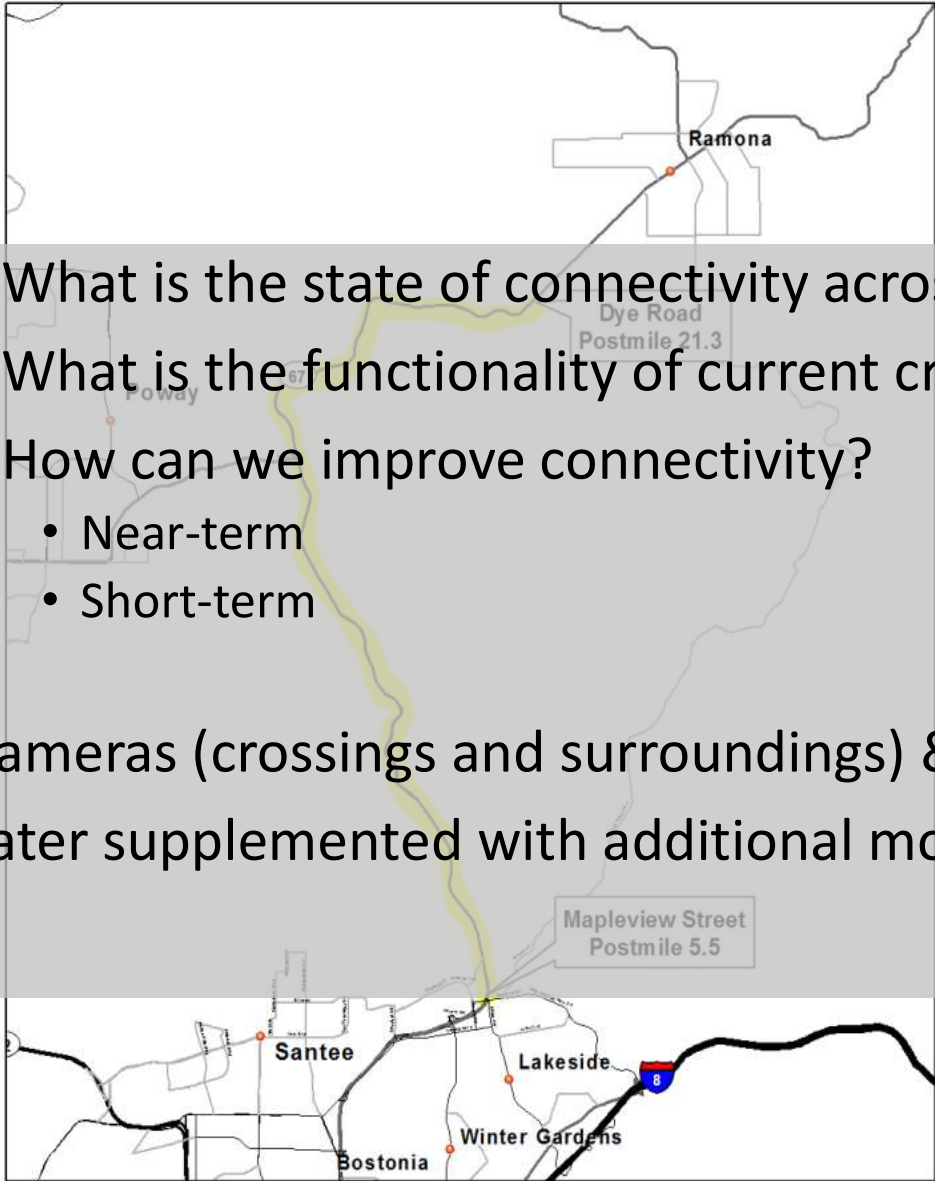


Increased  
Decreased  
activity in areas of  
high human use

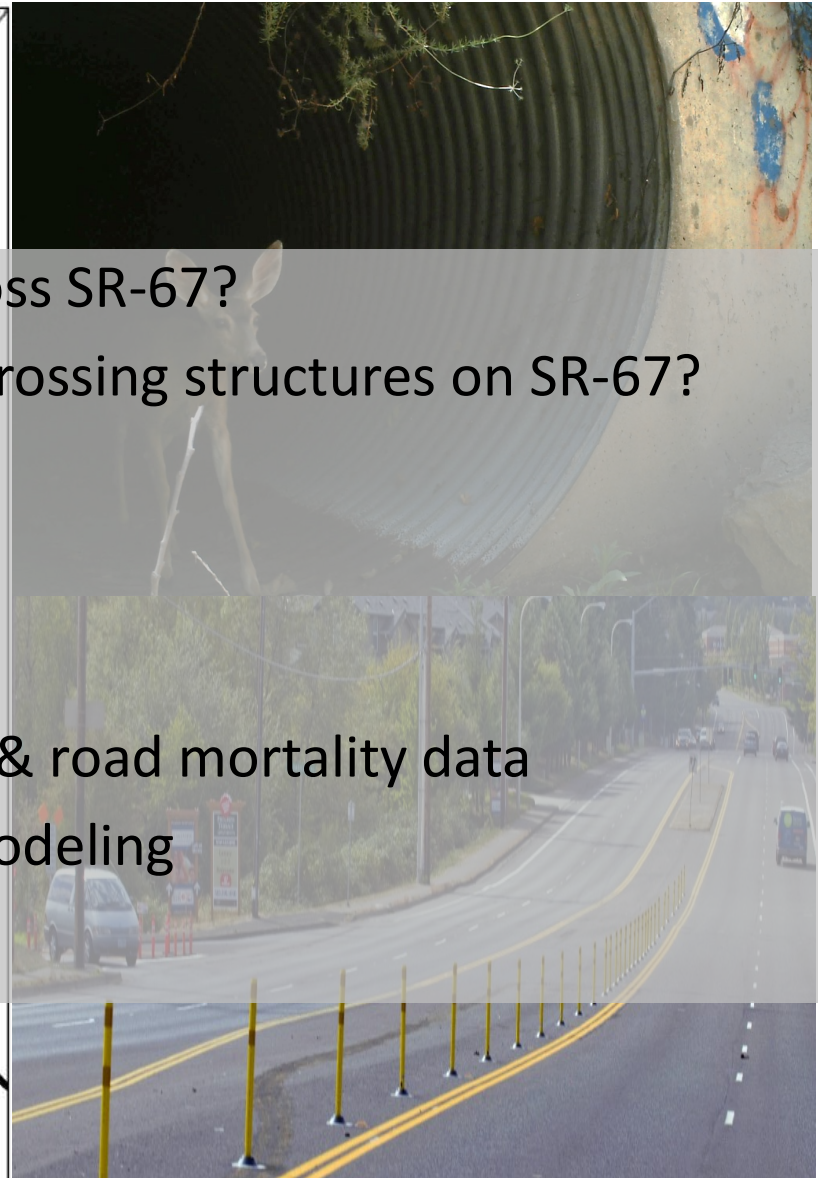




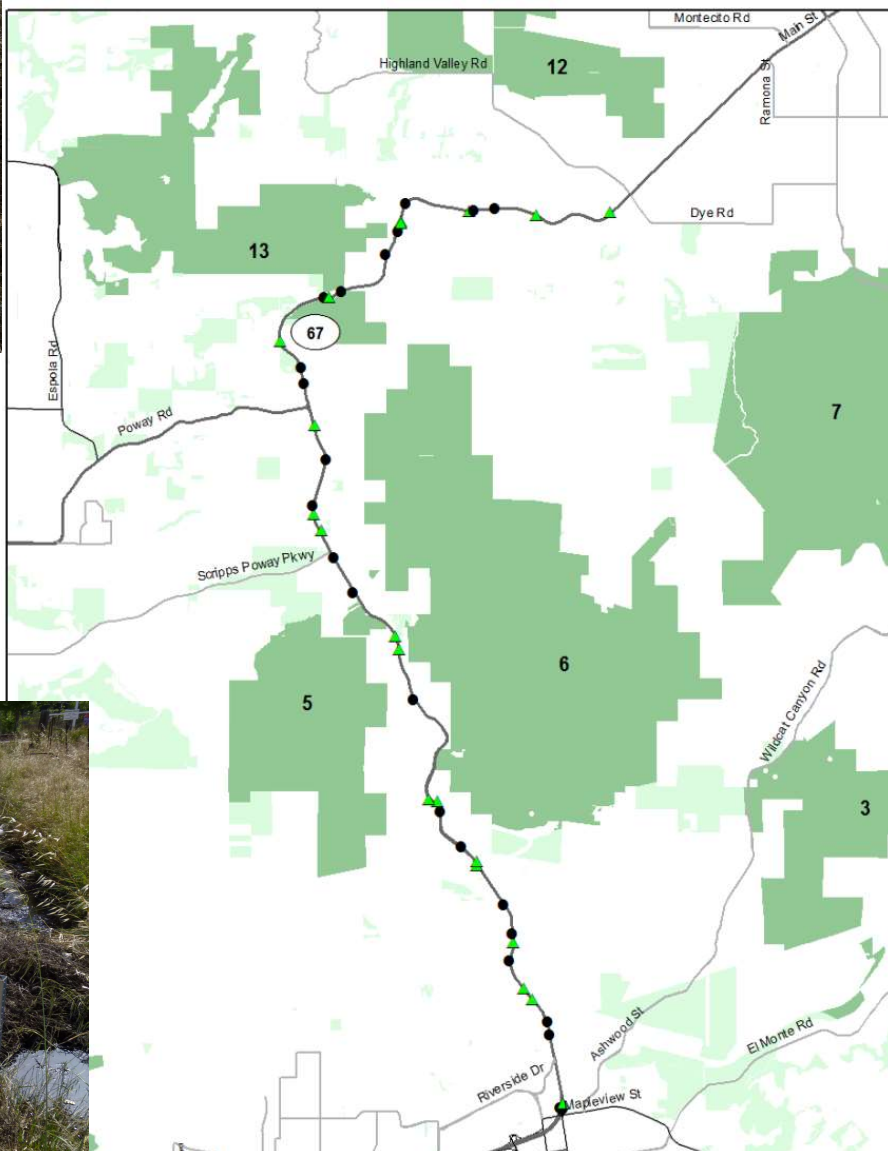


- 
- The map shows the SR-67 corridor from Poway in the north to Bostonia in the south. Key locations marked include Ramona, Dye Road (Postmile 21.3), Mapleview Street (Postmile 5.5), Santee, Lakeside, and Winter Gardens. A red dot is located near Ramona, and a yellow dot is near Mapleview Street. A road sign for SR-67 is visible near Poway.
- What is the state of connectivity across SR-67?
  - What is the functionality of current crossing structures on SR-67?
  - How can we improve connectivity?
    - Near-term
    - Short-term

Cameras (crossings and surroundings) & road mortality data  
Later supplemented with additional modeling







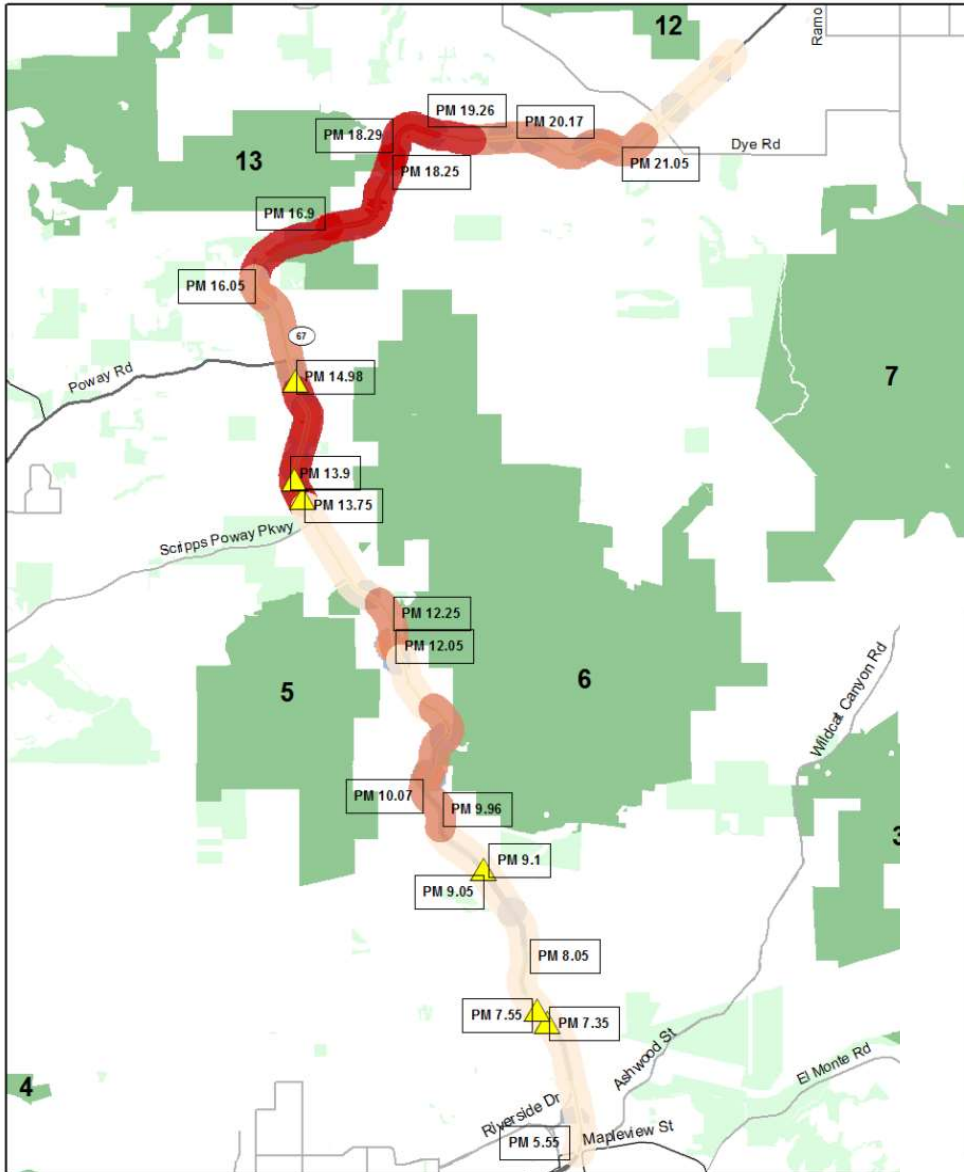




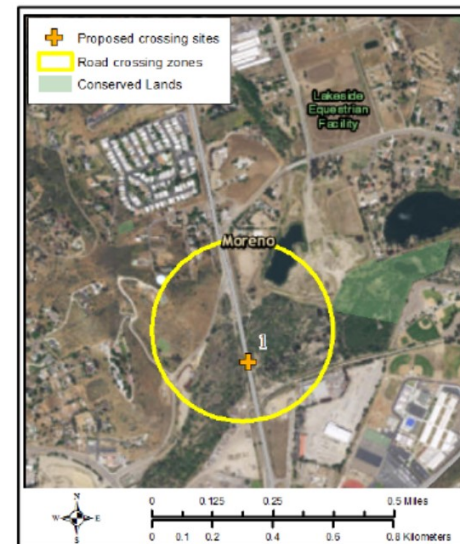
Acorn      )      069°F      021°C



Ltl Acorn      ☾      071°F      022°C      07/02/2015 22:4

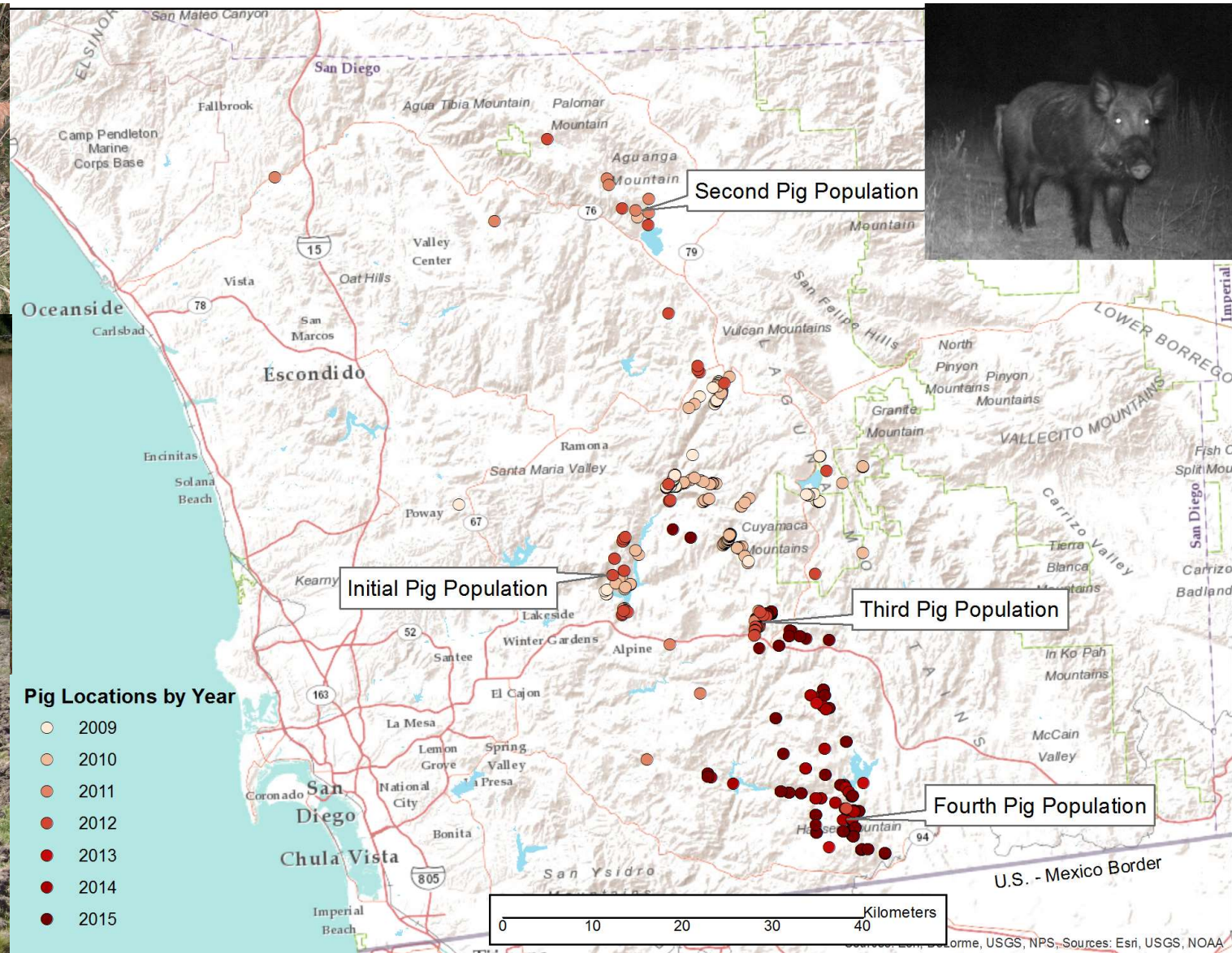


### Crossing Site 1



Crossing site 1 is located at the bridge over the San Diego River at Post Mile R5.95. The land on either side of the road in this location is in private ownership. The site is of high importance to wildlife and would only require minor improvements for enhancing wildlife movement. The overall size of the structure is appropriate but fencing is recommended on either side of the road running perpendicular to the bridge to prevent wildlife from accessing the industrial development in the surrounding area. Removal of the non-native vegetation in the San Diego River channel will also enhance wildlife movement through this structure.







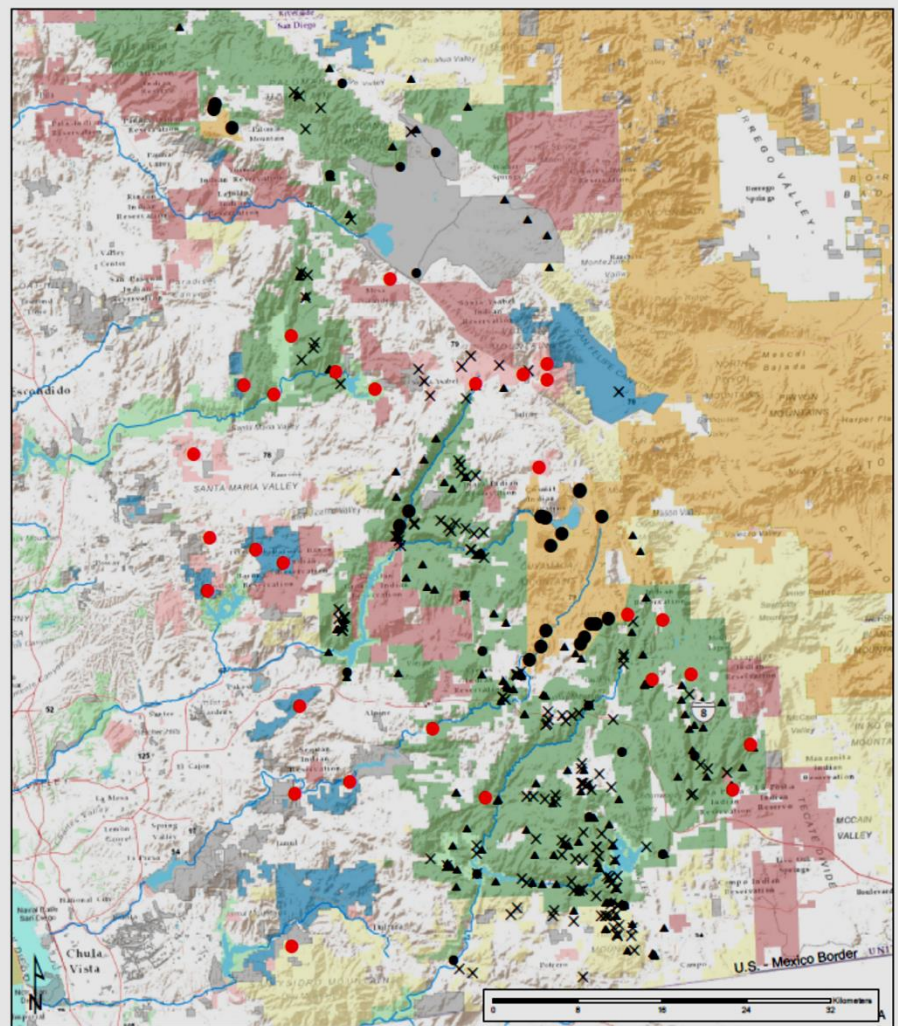
# Have we been successful?

## How do we define success??

- ~2 known boars remaining
  - Functional eradication?
- Negative survey data
- Certification of eradication
- Long-term monitoring







**Status**

- SDSU-run Camera
- Partner-run Camera
- ▲ Active
- × Not active

**Wildlife Services Cameras**

**Land Ownership**

- Other Conserved Lands
- CA Department of Parks and Recreation
- US Bureau of Land Management
- US Forest Service
- County of San Diego
- City of San Diego
- CA Department of Fish and Wildlife
- Tribal Reservation

15 Sept 2016

# Phase II Monitoring Levels

I: Some prior surveys or monitoring, but no detections

II: No prior surveys or monitoring, no detections or reports

III: No prior surveys or monitoring, but with reports of sign

IV: Prior pigs/sign, some level of monitoring after removal and current monitoring

V: Some prior surveys or monitoring, 1+ detections, but no current monitoring

