

# SPARCS + SDMMMP: Engaging with fire personnel when a fire occurs on your land





# SPARCS: Suppression and Planning Actions for Restoring Communities and Species

- Pre-fire Planning
  - Open Space Preserve Infrastructure and Decision Support Databases
- Incident Response
  - Resource Advisor Cohort
    - READ/REAF/ARCH
    - BAER
    - Flashcards
    - READ Guide
- Post-Fire Research



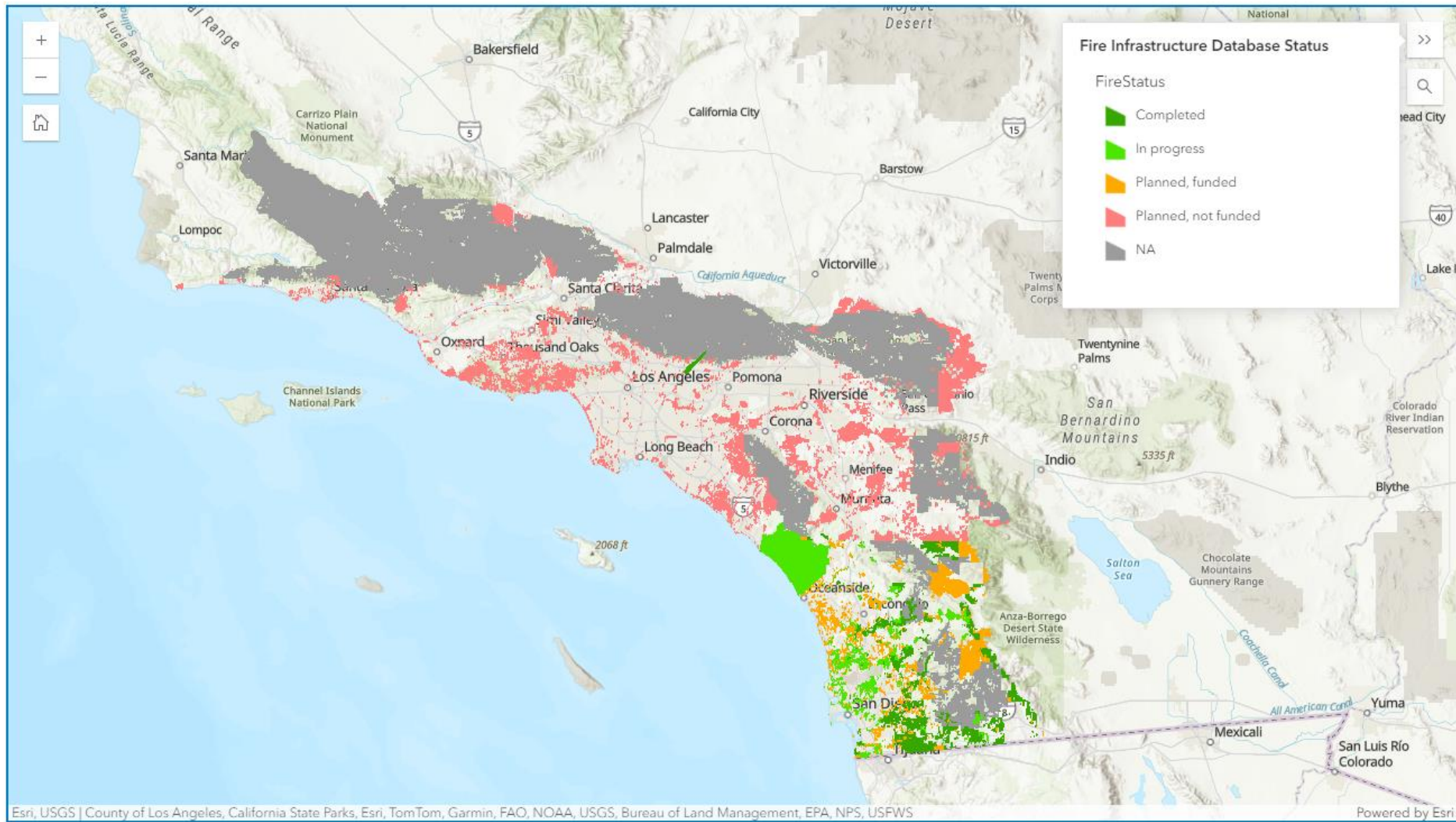
# Pre-Fire Planning

- Open Space Preserve Infrastructure and Decision Support Databases
  - Initial Attack Database
  - Resource/Suppression Repair Database





# Pre-fire Planning





[illegible]

-  Sensitive Areas
-  Infrastructure Points
-  Dip Site
-  Incident Command Post

 Staging Area  
 Gate  
 Water Source

-  Paved Surface Road
-  Accessible Dirt Road
-  Limited Access Road
-  Roadside Pipe Barrier No Vehicle Access
-  Hiking Trail

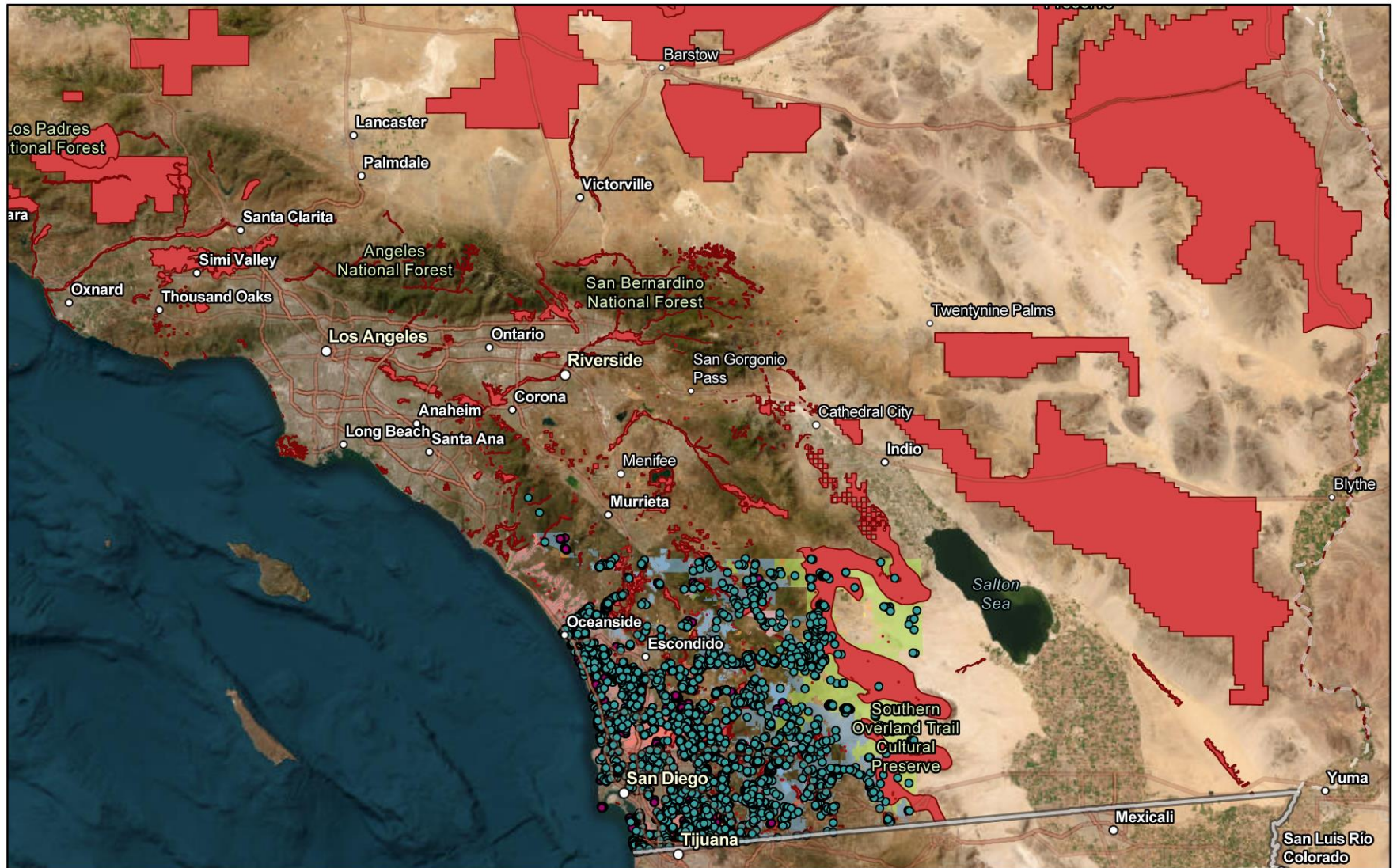
Managed Lands  
 CDFW  
 USFWS  
 USA Topo Maps

A number line with two scales. The top scale is labeled in miles (mi) and has major tick marks at 0, 0.75, 1.5, and 3. The bottom scale is labeled in kilometers (km) and has major tick marks at 0, 1.25, 2.5, and 5. The line is divided into 8 equal segments by tick marks. The first segment is labeled 0.75 on the top scale and 1.25 on the bottom scale. The second segment is labeled 1.5 on the top scale and 2.5 on the bottom scale. The third segment is labeled 3 on the top scale and 5 on the bottom scale.

Copyright:© 2013 National Geographic Society, i-cubed



# Resource Protection and Suppression Repair Database

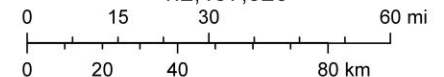


10/29/2024

- San Diego- animals of concern
- San Diego- plants of concern
- Potential golden eagle nests
- Critical Habitat - southern California
- Soils- Clay, Gabbro, and Metavolcanic
- Clay
- Grabbo
- Metavolcanic
- Conserved Lands
- City
- Federal
- State
- Private
- Non-Profit
- County DPR
- Home Owners Association
- Special District
- Joint
- County Other
- Other
- World Imagery
- Low Resolution 15m Imagery

High Resolution 60cm Imagery  
 High Resolution 30cm Imagery  
 Citations  
 150m Resolution Metadata

1:2,197,920



UC Riverside, County of Riverside, California State Parks, Esri, TomTom, Garmin, FAO, NOAA, USGS, Bureau of Land Management, EPA, NPS,



# Resource Advisor Program



- Emphasize MIST (Minimal Impact Suppression Tactics)
  - “Avoid, Minimize, Mitigate, Repair”
- Share sensitive natural and cultural resources:
  - Known populations of sensitive plant and animal sp.
  - Designated Critical Habitat
- Advise on alternatives to protect resources
- ARCHs share cultural resource concerns
- BAER after-incident work on Fire effects
- Quarterly READ Cohort Meetings
  - Training/Educational element



- **Suppression Repair**

- Advise on the best tactics to repair suppression lines
  - Tactics depend on location, sensitive resources (including cultural), location on the fire perimeter, etc.
- Block OHV access to conservation open spaces

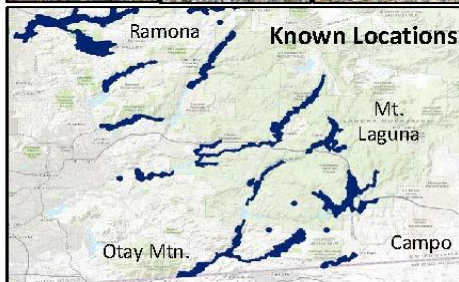
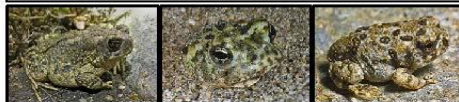




## Endangered Species:

Arroyo toad

Consult with READ



**Description:** A small toad (~3 inches long), brownish-tan to greenish-brown body with dark- and yellow-colored spots. NO white stripe down its back (unlike western toads). Primarily active at night. Adults active at night; juveniles can be active during the day.

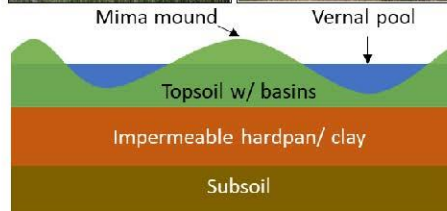
**Habitat:** Slow moving streams with shallow pools, sandbars, stream terraces, sandy creek beds & wetland vegetation.

**Protection:** Arroyo toads are rarely visible, but they are present. Avoid disturbance in habitats listed above year-round.

## Endangered Habitat:

Vernal pools

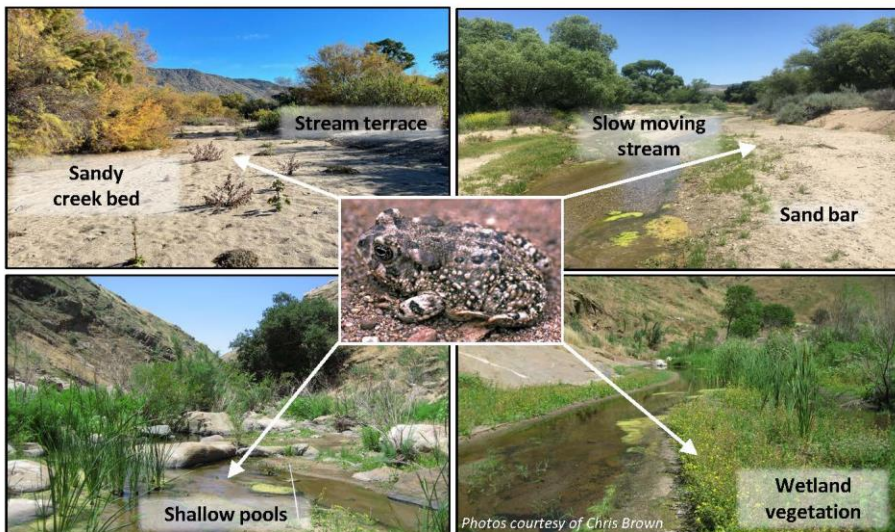
Consult with READ



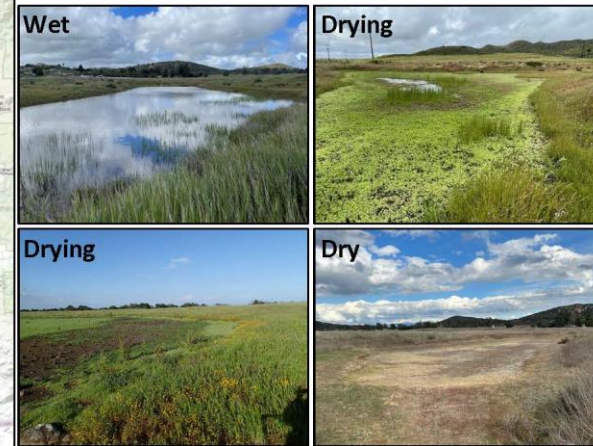
**Description:** Vernal pools are temporary pools created by rainwater. These do not drain due to a layer of soil that prevents absorption, but dry as summer progresses. Pools fill during winter and spring rains but are dry most of the year.

**Significance:** Vernal pools are home to rare plants and animals that have evolved to take advantage of these temporary pools.

**Protection:** To protect vernal pools avoid disturbing the soil structure in and around the pools. Do not use fire retardant.



## Known Locations:





**Endangered Species:**  
**Quino checkerspot butterfly**  
 Consult with READ



Adult

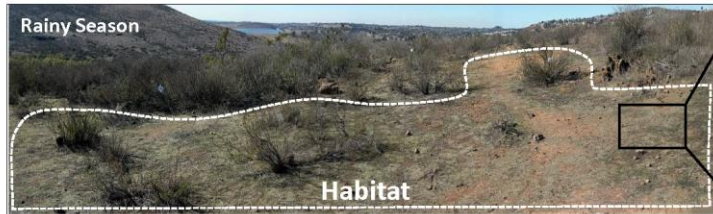


Larva

**Description:** A small (~1") orange, white and black butterfly. Larvae are up to 1", black, with orange spikes on their back.

**Habitat:** Patchy, open scrublands with several meters between shrubs. Often (not always) associated with soil crusts and clay soils. Found on rounded ridges and hilltops, gently rolling hills, & valley bottoms. During fire season Quino is dormant but present as larva.

**Protection:** Avoid ground disturbance in scrub openings and soil crusts.



Rainy Season

Habitat



Soil crust

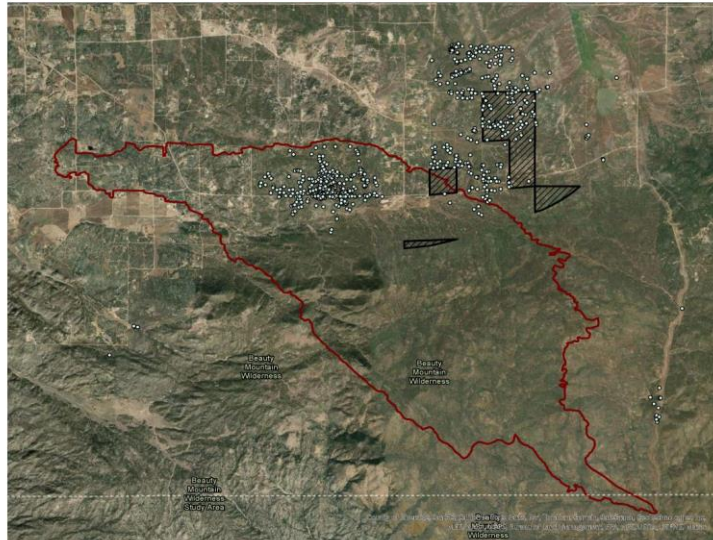


Dry Season

Habitat



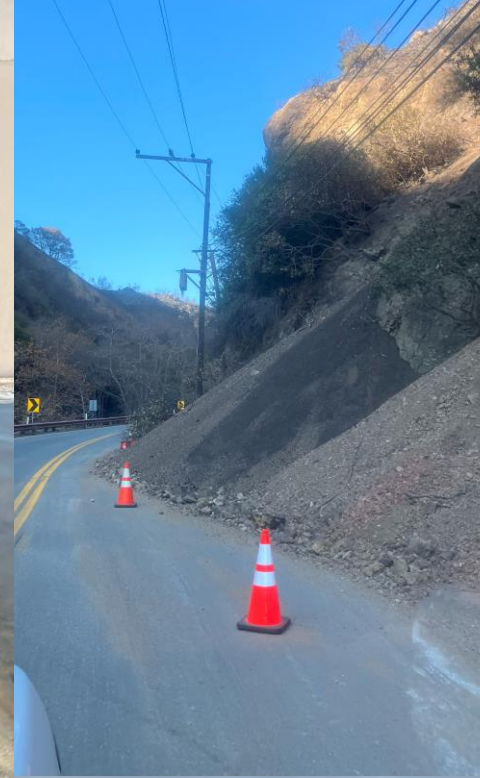
Soil crust






# Resources

- **SOP coming...**
- **Online trainings**
- **READ Cohort can support your lands**
- **Useful websites:**
  - **GACC**
  - **SAWTI**
  - **AlertCA Cameras**





- **Bureau of Land Management**
- **San Diego Management and Monitoring Program**
- **US Fish and Wildlife Service**
- **National Park Service**
- **California dept. of Forestry and Fire**
- **County of San Diego**
- **Local land management NGOs**
- **US Forest Service**
- **Western Riverside County RCA**
- **CA State Parks**
- **CA Dept. of Fish and Wildlife**

Pete Scully – Scully Consulting  
 James Gannon - BLM  
 Kris Preston, Emily Perkins,  
 Sarah McCutcheon - SDMMP  
 Robert Fisher - USGS







**[aparker@usgs.gov](mailto:aparker@usgs.gov)**  
**(442) 359-5566**

**[sdmmp.com/sparcs](https://sdmmp.com/sparcs)**

**U.S. GEOLOGICAL SURVEY**



**SUPPRESSION & PLANNING ACTIONS  
FOR RESTORING COMMUNITIES & SPECIES**