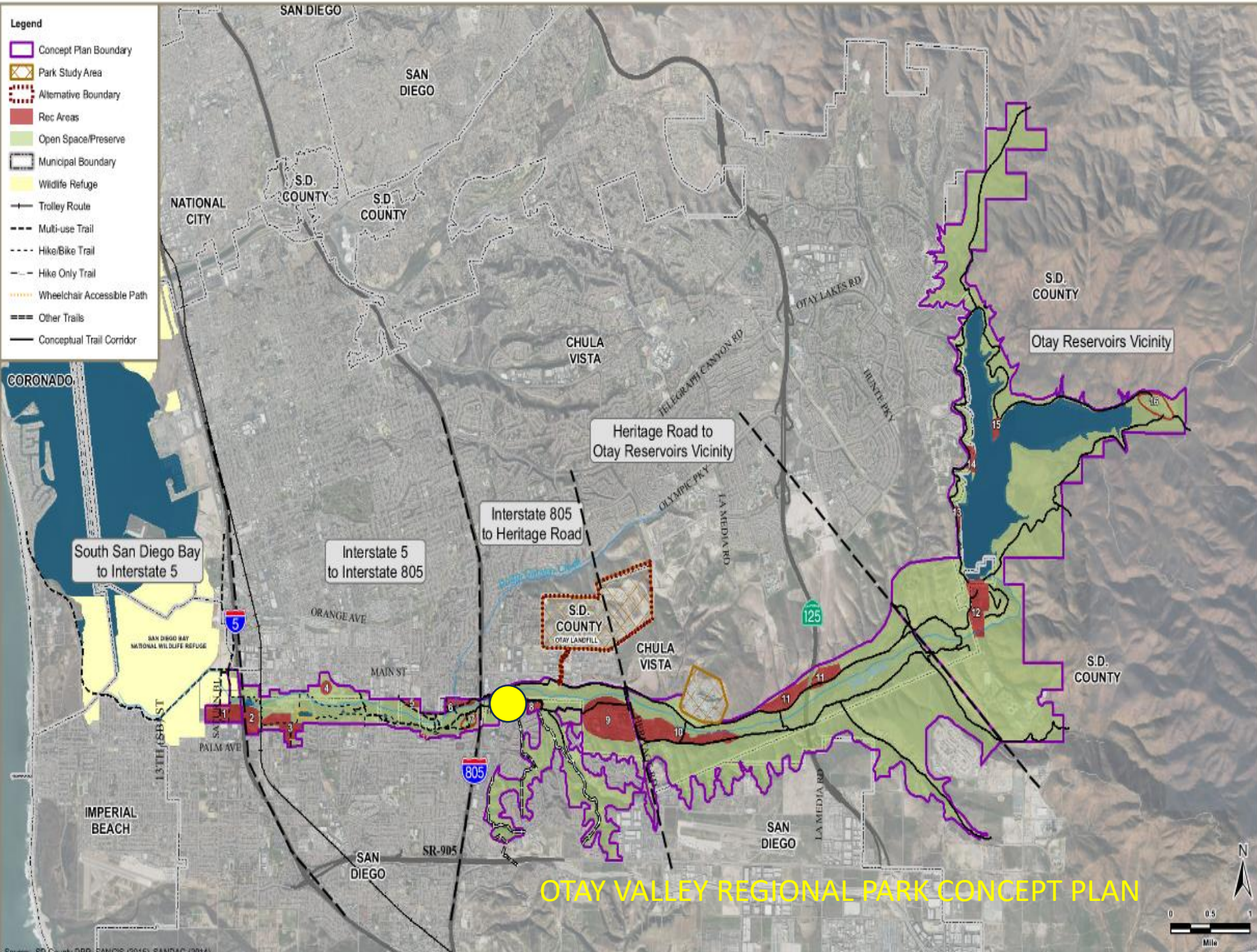


Enhancing Restoration and Connections in the Otay River Valley Regional Park

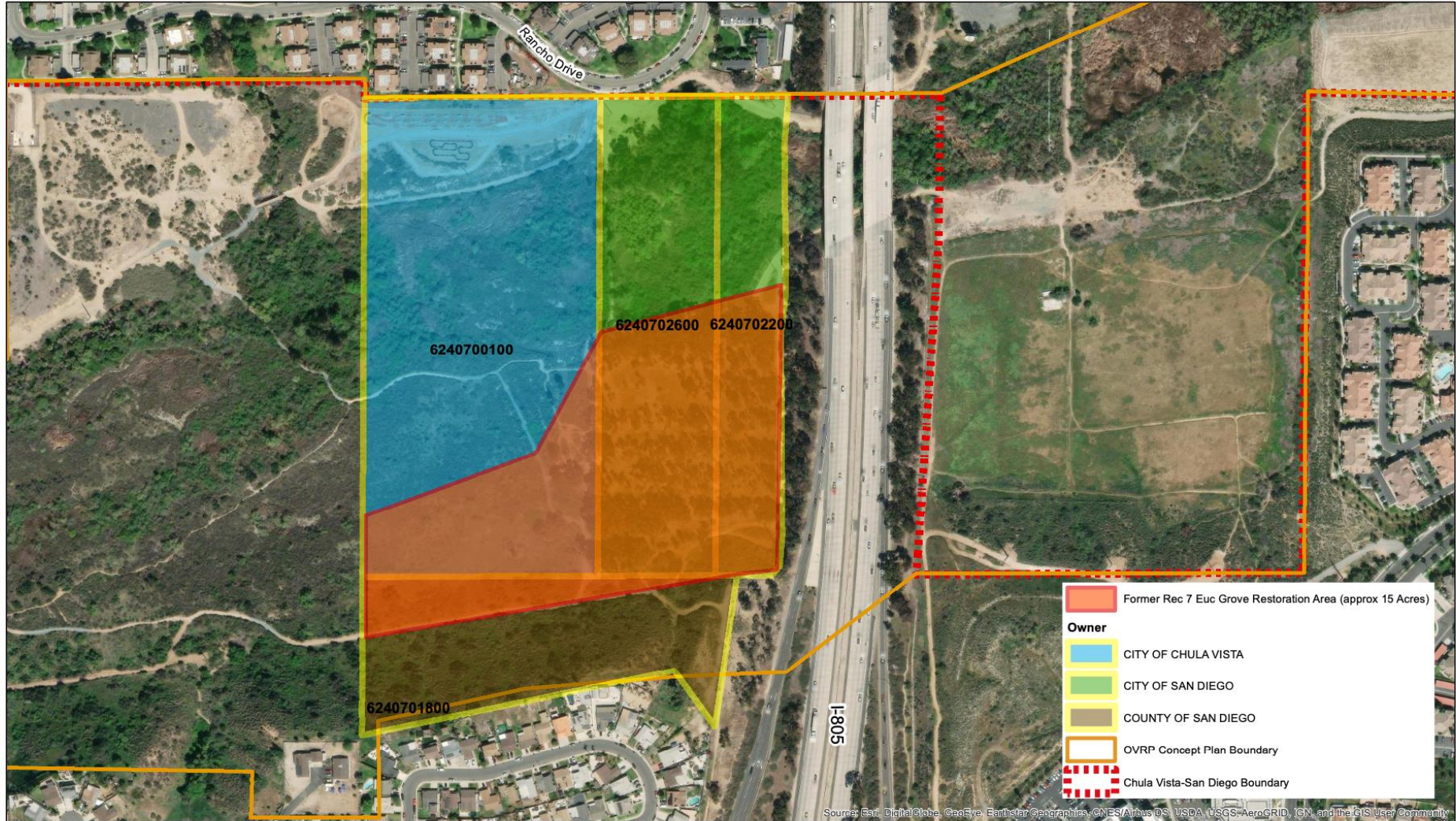


Project overview

- Produce shovel-ready plan to restore and rejuvenate a section of OVRP dedicated to open space.
 - Supports OVRP Concept Plan for this particular piece of the park.
 - Funding is \$409,000 from California Wildlife Conservation Board
 - Addresses five goals (outlined later).
 - Project end date is March 2027 but can be completed sooner.
- 



Project location

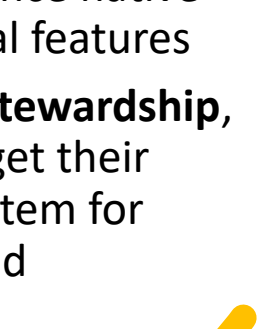


0 0.0275 0.055 0.11 0.165 0.22 Miles





Project Goals

- **Restore native habitat** appropriate to supporting local wildlife, especially native and at-risk species, while reducing air and water pollution, erosion, and fire risk.
 - **Enable native wildlife to connect** both within the property and adjacent OVRP property through natural patterns such as water and air flows, and wildlife corridors.
 - **Improve water quality, availability and drought tolerance** through stormwater reduction, improved infiltration, and reduced erosion, using nature-based solutions to the extent feasible.
 - **Increase public access** to enable more use of the park, especially by local disadvantaged community members, so they can directly experience native plants, animals, and supporting natural features
 - **Create community engagement and stewardship**, especially from grassroots groups, to get their input into the plans and produce a system for supporting project implementation and maintenance.
- 

Project Partners



**RESOURCE
CONSERVATION
DISTRICT**

Greater San Diego County



GREEN
INFRASTRUCTURE CONSORTIUM



**INSTITUTE FOR
PUBLIC
STRATEGIES**



**SAN DIEGO
REGIONAL
POLICY &
INNOVATION
CENTER**



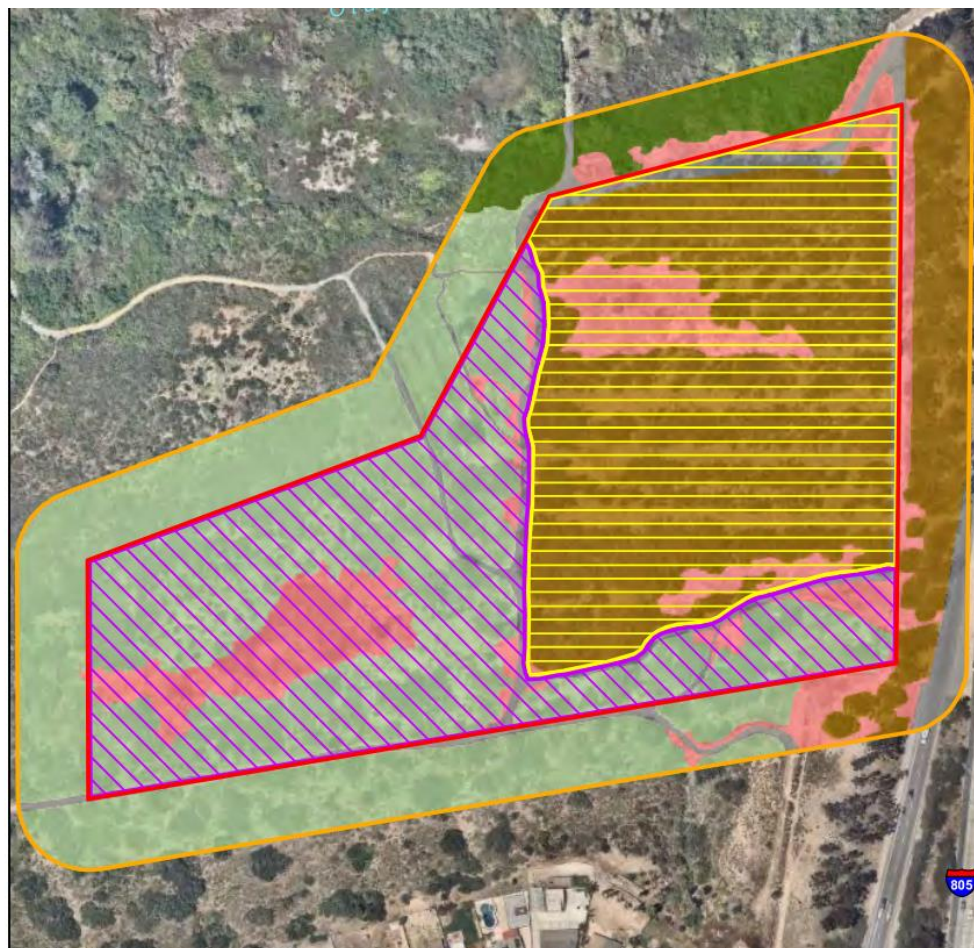
Mongo Tribe



First year achievements

- Community outreach
 - Presentations at OVRP Citizens' Advisory Committee and local planning groups; convened a community forum
 - Working on tribal engagement
- Hired consulting firm RECON to conduct a biological and cultural resources survey
- Started exploring environmental compliance and permitting
- Drafted two concept plans for site design – one has been selected after community and partner feedback
- Exploring partnership with the San Diego Zoo Wildlife Alliance and the Global Conservation Consortium for Oak

Site analysis from biological survey

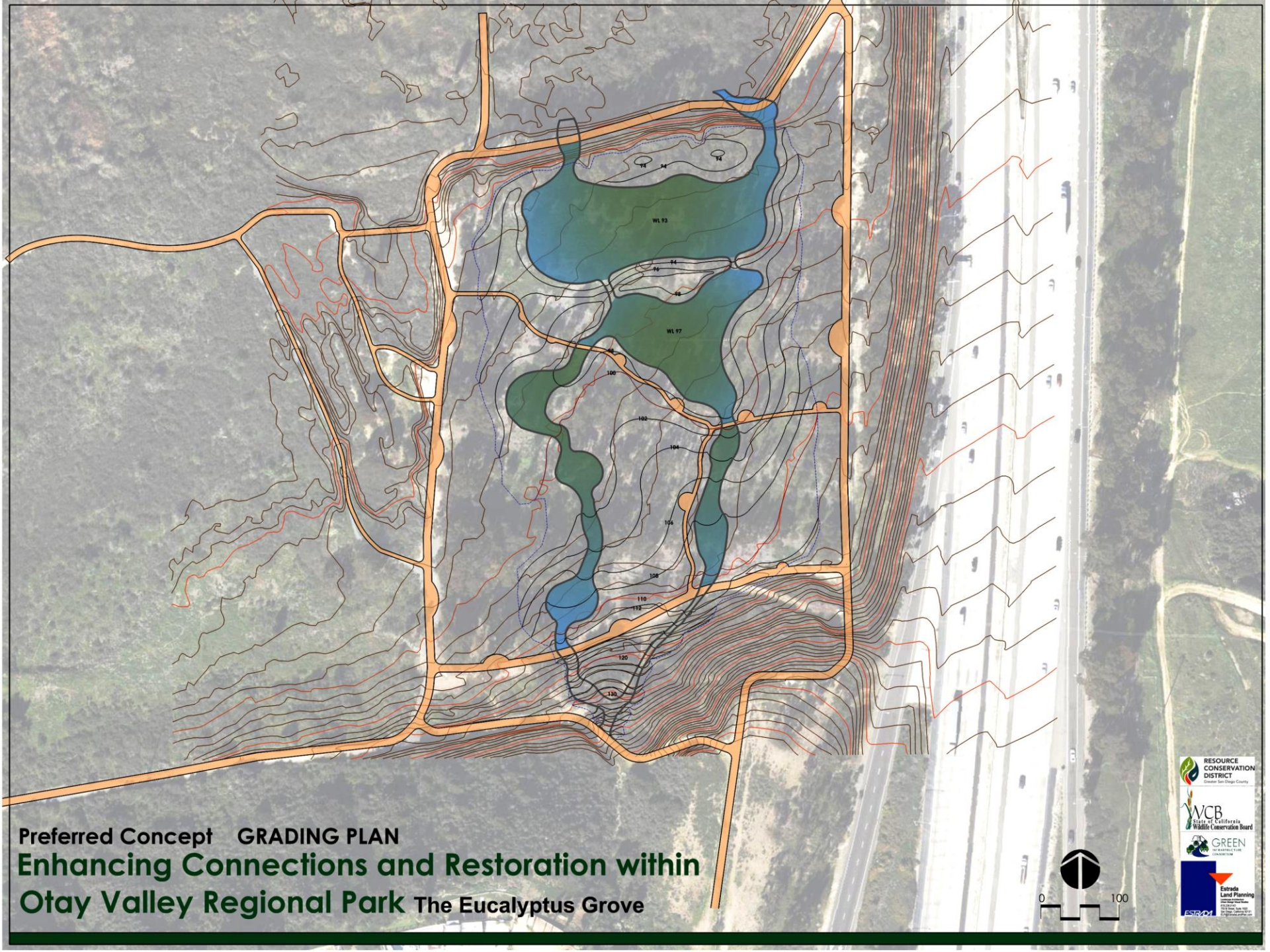


- Project Boundary
- Survey Area
- Restoration (7.89 acres)
- Enhancement (7.53 acres)

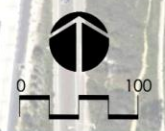
- Vegetation Community**
- Riparian Woodland
 - Diegan Coastal Sage Scrub
 - Eucalyptus Woodland
 - Disturbed Land
 - Urban/Developed

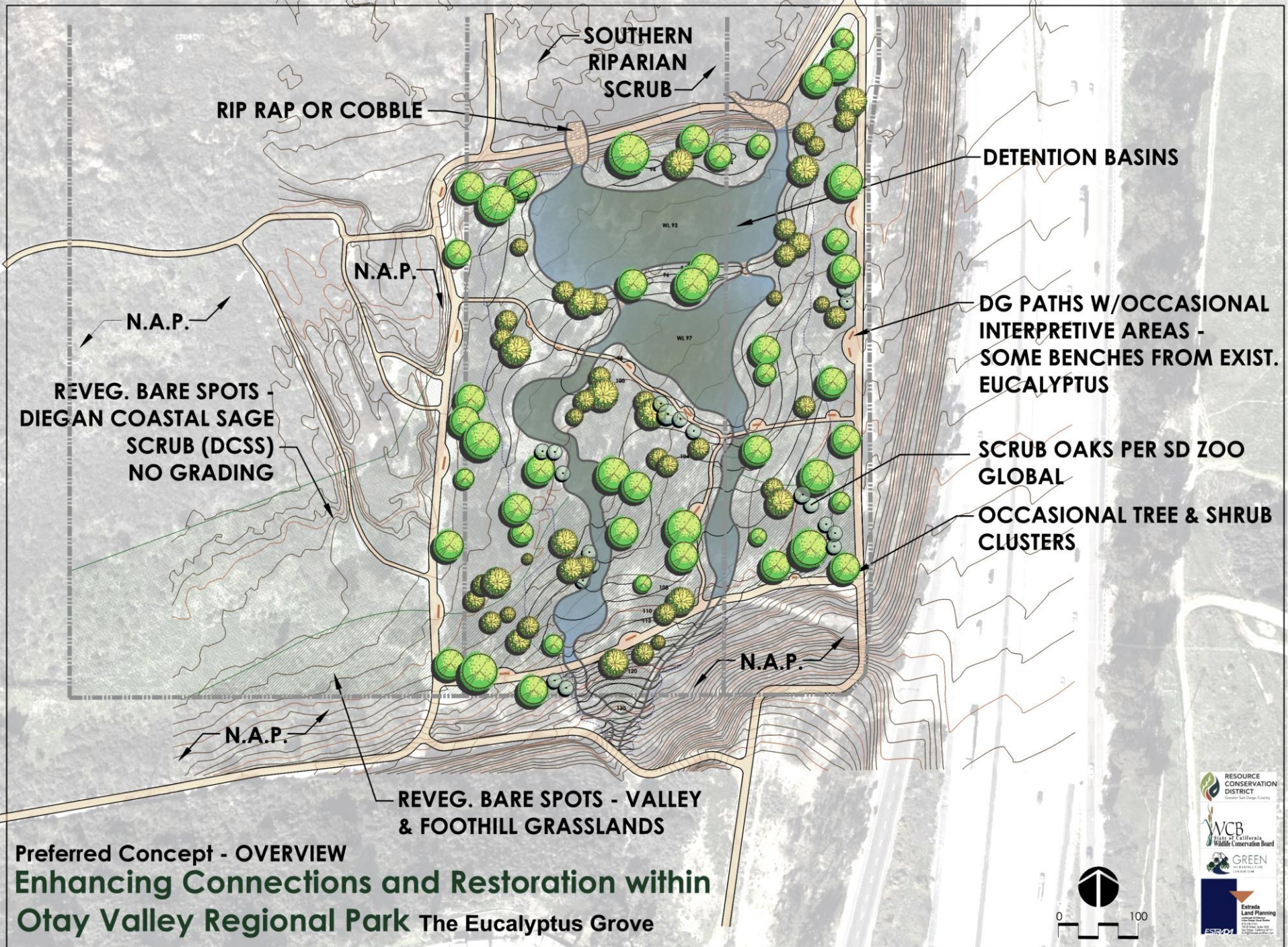
RECON

M:\JOBS6\10557\common_gis\MXD\Biorpt\fig7.mxd 07/08/2024 bma



Preferred Concept GRADING PLAN
Enhancing Connections and Restoration within
Otay Valley Regional Park The Eucalyptus Grove





Cross Section looking East

Graded Pedestal to
Remain after
removing Eucalyptus

Otay River Wetland


Shallow Detention
Basin

Existing Slope

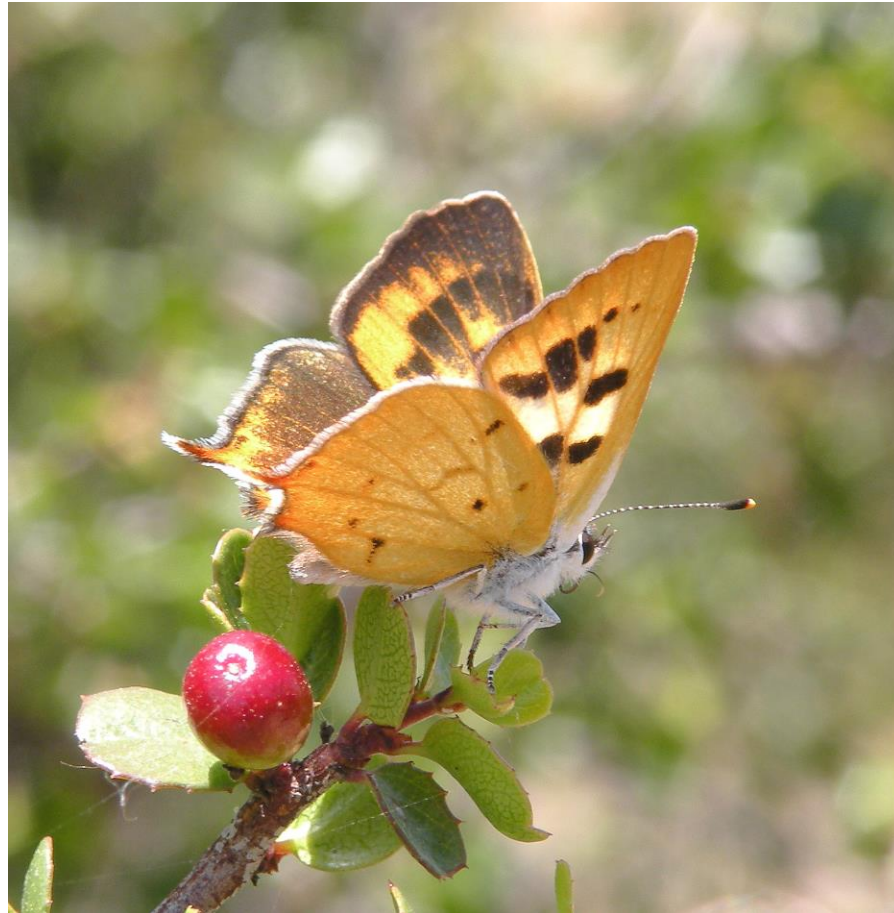


A large orange circle on the left side of the slide, partially cut off by the edge.

Next steps

- Continue community engagement
 - Soil testing on site once ROE is finalized
 - Finalize site plan and construction documents
 - SERP application
 - Identify funding sources for implementation
- 
- A yellow dashed line in the bottom right corner, consisting of several short, curved segments.

Hermes Copper Butterfly Habitat Restoration in Southeast San Diego County



Project Overview

- Funded by BLM through the Good Neighbor Authority
- 5-year project, May 2024 - April 2029
- Purpose is to help maintain and work towards recovery of the species, which is federally listed as threatened, and to refine the understanding of HCB habitat needs to guide future restoration efforts.

Project Partners

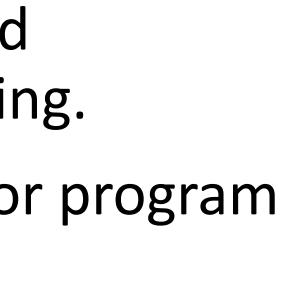


Project components - funded

- **SDZWA:** propagation of spiny redberry at property in Descanso to support a captive rearing site & conduct ongoing site maintenance.
- **WildSpring Ecology:** monitoring of redberry at Zoo property and conduct analysis of secondary metabolites and compounds in spiny redberry with goal of learning the role these compounds play in habitat suitability.
- **Viejas:** identify areas of Viejas land where HCB habitat can be enhanced; collaborate with partners to train Viejas staff and youth in HCB identification, monitoring, and survey methods.
- **RCD:** grant management and reporting, partner coordination, and project outreach/info sharing activities.
- **Seed collection:** funds to hire a contractor to collect spiny redberry, slender sunflower, and buckwheat on USFS land


A large orange circle on the left side of the slide, partially cut off by the edge.

Project components: in-kind

- **USFWS:** for biologist time to conduct habitat and species surveys, provide training to biologists and other land stewards associated with the project, and other program support activities.
 - **USFS:** staff time to conduct monitoring activities on Forest Service land. Seed collected host and nectar plants into / near occupied habitat areas where these species are sparse.
 - **SDMMP:** staff time to conduct monitoring on BLM land and participate in project planning.
 - **RCD:** additional staff time for program oversight
- 
- A yellow dashed line in the bottom right corner, consisting of several short, curved segments.

A large orange circle on the left side of the slide, partially cut off by the edge.

Activities so far

- Subaward agreements finalized
 - Partner kick off and planning meetings
 - Hermes Copper identification and monitoring training for project partners
 - Solicitation for seed collection contract – aim to begin early 2025
 - Our first outreach effort!
- 
- A yellow dashed line in the bottom right corner, consisting of several short, curved segments.

Hermes Copper Quick Guide:

use to ID Hermes, not other species



6 Hermes Copper



7 Hermes Copper

Hermes copper: when perched usually with wings together (left) but can have wings open (right), especially in morning. Underside mostly light orange with some spots of upper wing visible. Upperside mostly brown with orange in middle of forewing with black spots and orange at base of tails on hindwing.



Questions?

*For additional questions or project information,
contact:*



Ann Baldrige, RCD of Greater San Diego County



Ann.baldrige@rcdsandiego.org