

SWFL – NRCS Funds for Riparian Restoration

Sam Rapp

Partner Biologist

Shea OKeefe

Area 4 Wildlife Biologist

California NRCS

2024



Helping People Help the Land
An Equal Opportunity Provider and Employer



Objectives

- Introduction to NRCS
- Increased awareness of **WLFW fund pool**
 - Typical riparian restoration practices
 - Eligibility requirements (land uses)
- History of the program in SoCal
- How to apply

Natural Resource Conservation Service (NRCS)

- **Our Mission:** We deliver conservation solutions so agricultural producers can protect natural resources and feed a growing world.
- Provide technical & financial assistance to address natural resource concerns
- Partnering with private landowners

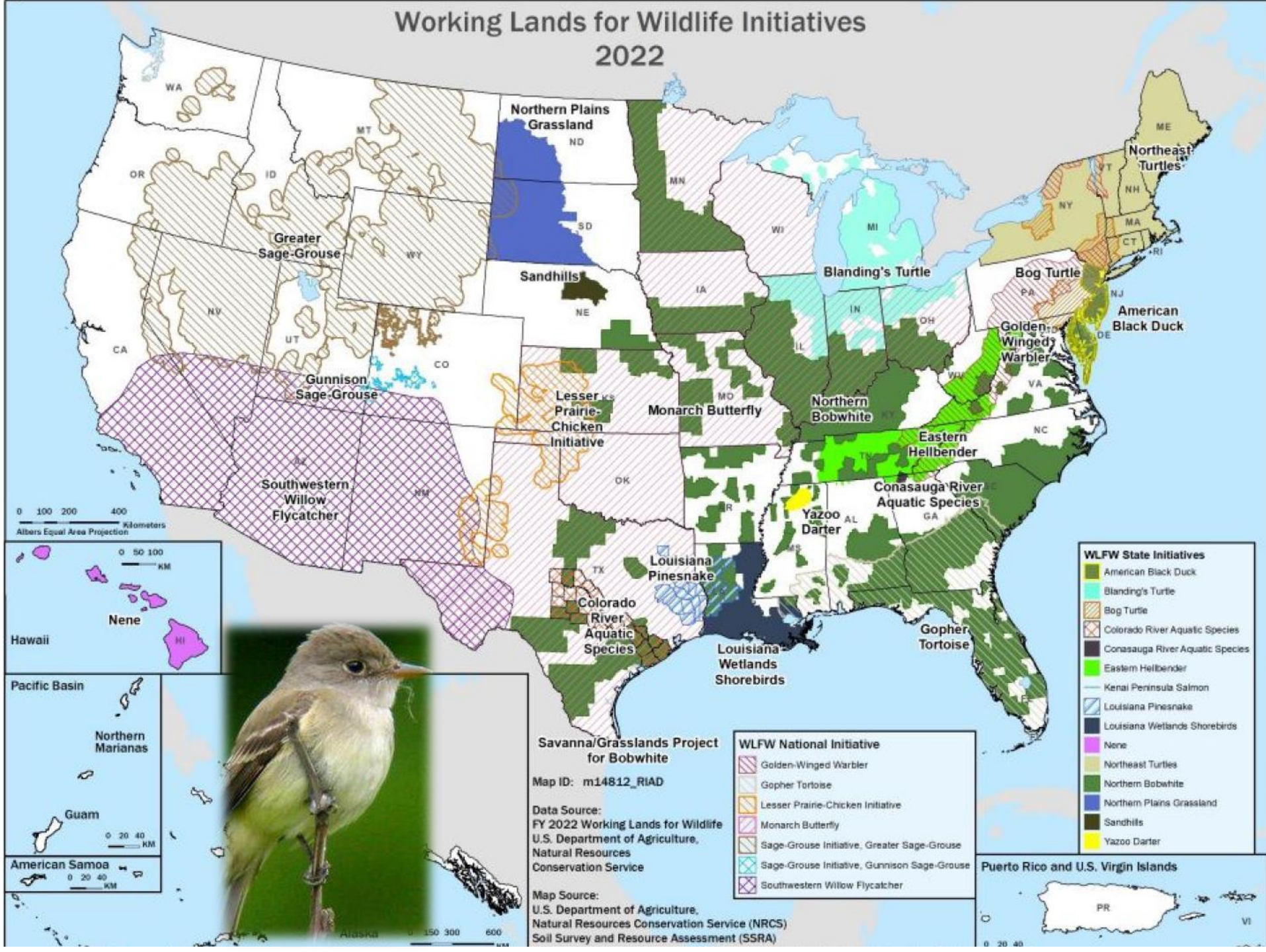
WLFW



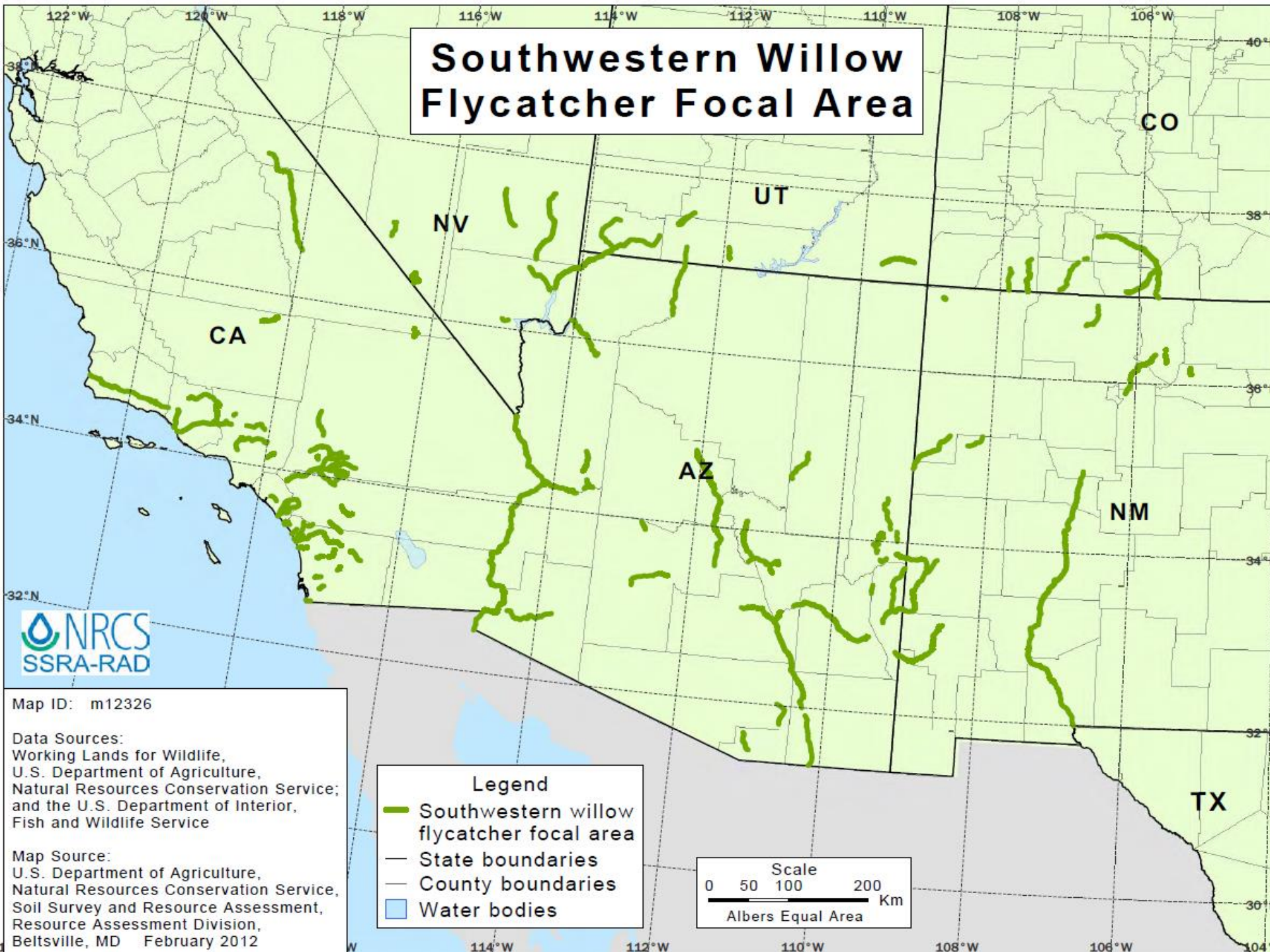
Balancing Sustainable Agriculture & Species Conservation

Helping People Help the Land
An Equal Opportunity Provider and Employer

Working Lands for Wildlife Initiatives 2022



Southwestern Willow Flycatcher Focal Area



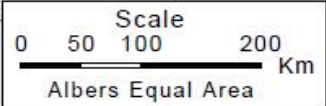
Map ID: m12326

Data Sources:
Working Lands for Wildlife,
U.S. Department of Agriculture,
Natural Resources Conservation Service;
and the U.S. Department of Interior,
Fish and Wildlife Service

Map Source:
U.S. Department of Agriculture,
Natural Resources Conservation Service,
Soil Survey and Resource Assessment,
Resource Assessment Division,
Beltsville, MD February 2012

Legend

- Southwestern willow flycatcher focal area
- State boundaries
- County boundaries
- Water bodies

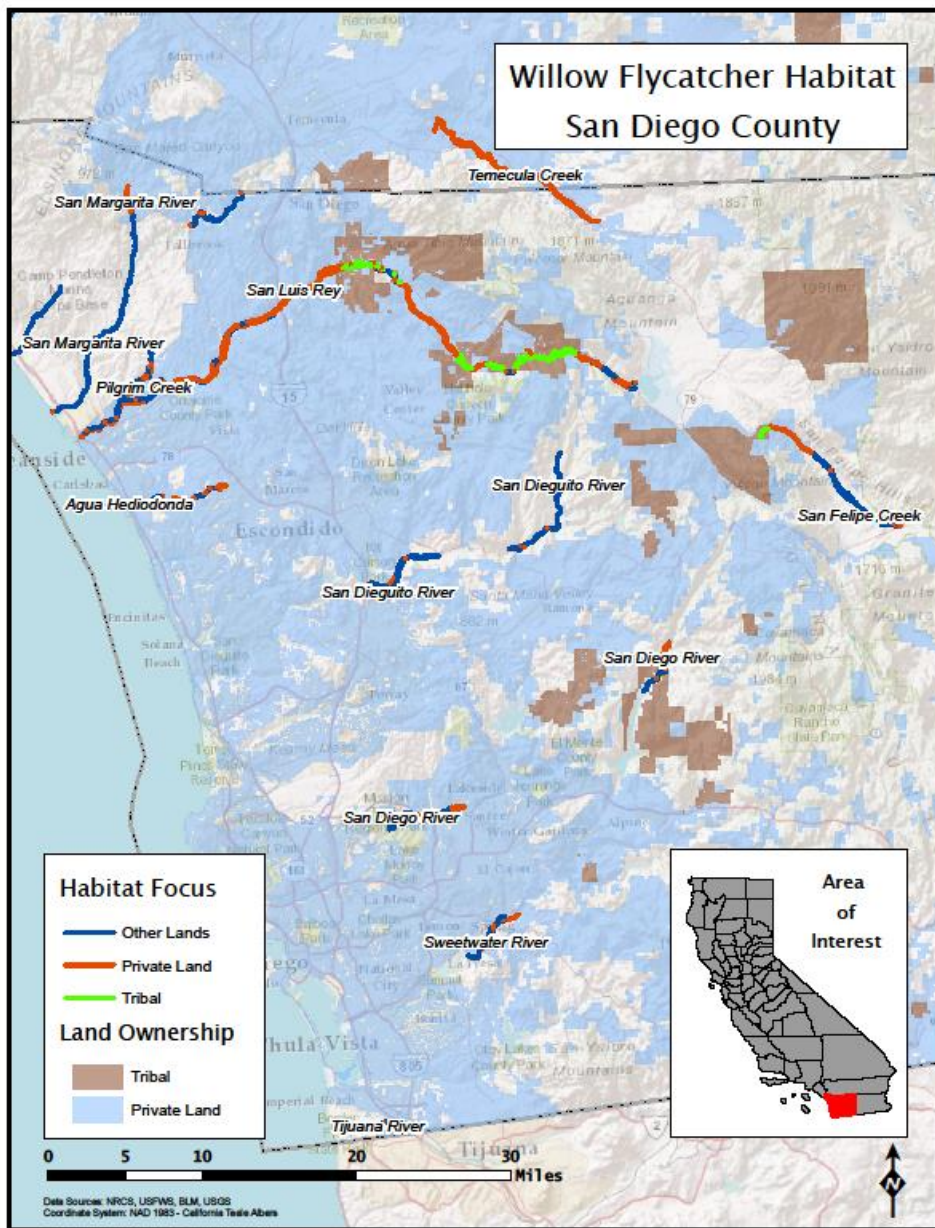


Standard restoration practices

- Invasive species removal –
 - Arundo, Caster bean, Eucalyptus, Tamarisk
- Active revegetation of woody and herbaceous natives
- Passive revegetation w/ monitoring and management
- Simple wildlife monitoring
- Working Lands Management practices
 - Exclusion fencing for cattle, or off stream watering sources

Eligible Land

- Private Lands, Easements or leases of Public land to private entities, tribal lands **AND Working Lands**
- Forest Land and other land use designations (ag, crop, range)



Project Selection

- Highest Prioritization
 - Conservation Practices are supported by NRCS approved SWFL Habitat Management Plan
 - Treatment area within the SWFL Focal Area where core practice applied on all treated acres
- Medium Prioritization
 - Treatment area is outside SWFL Focal Area

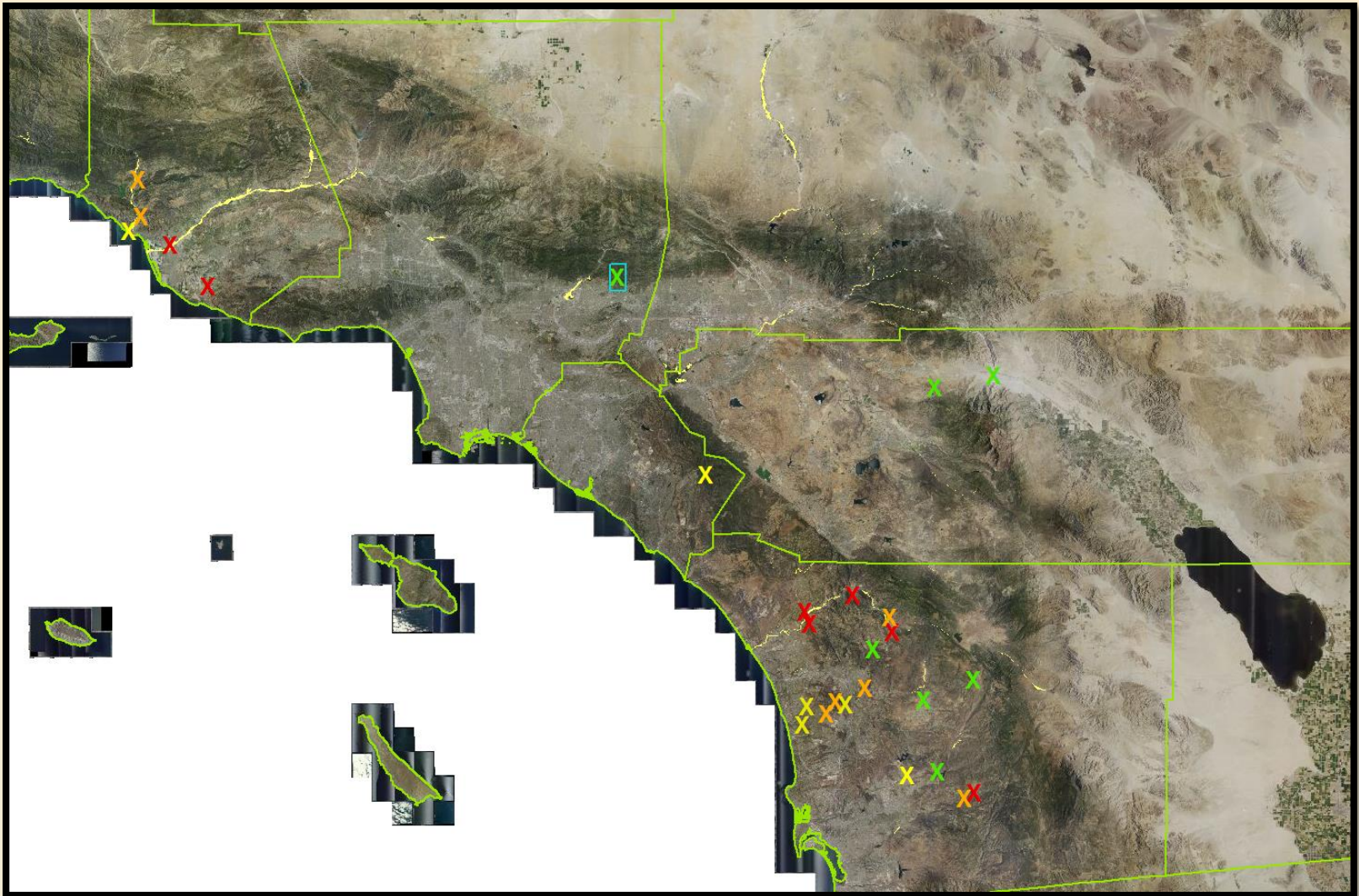
Ranking Criteria– Species Presence

- Is there credible verification of species occurrence (for example: photos, Heritage Database, USFWS, NRCS or State fish and wildlife agency documentation)
- Based upon available species occurrence data and information, can the target species reasonably be assumed to occur within the offered area?

Local Ranking Criteria

- *Grazing* in riparian zone
- *Hydrology* is functional with nesting habitat and can naturally develop once stressors removed
 - Or hydrology is impaired but can be improved with nesting habitat restoration
- Floodplain widths - >300' is optimal
- Riparian quality and quantity

Southern California Projects



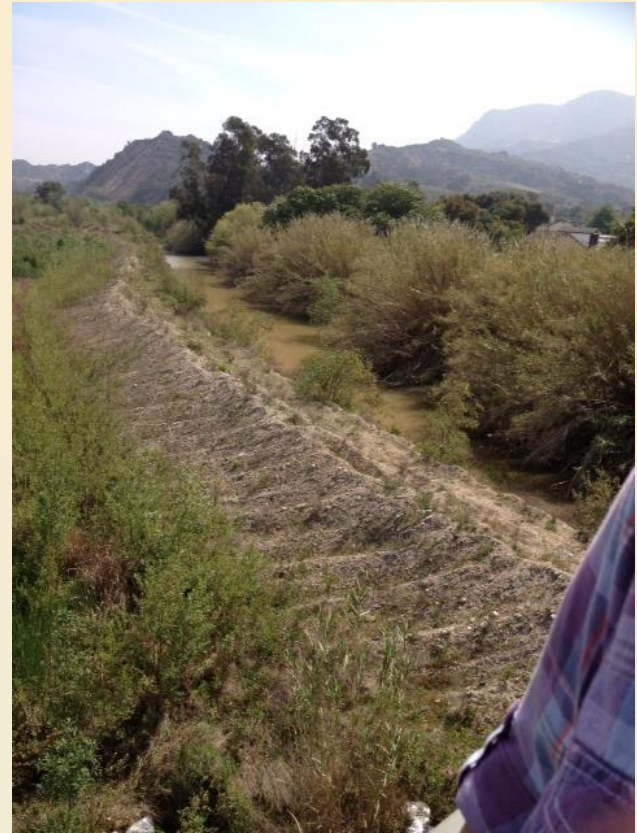
✖ – 2013 ✖ – 2014 ✖ – 2015 ✖ – 2016

Project examples

San Diego Co/San Diego River Tributary



Ventura Co/Santa Clara River



Ventura Co/Santa Clara River



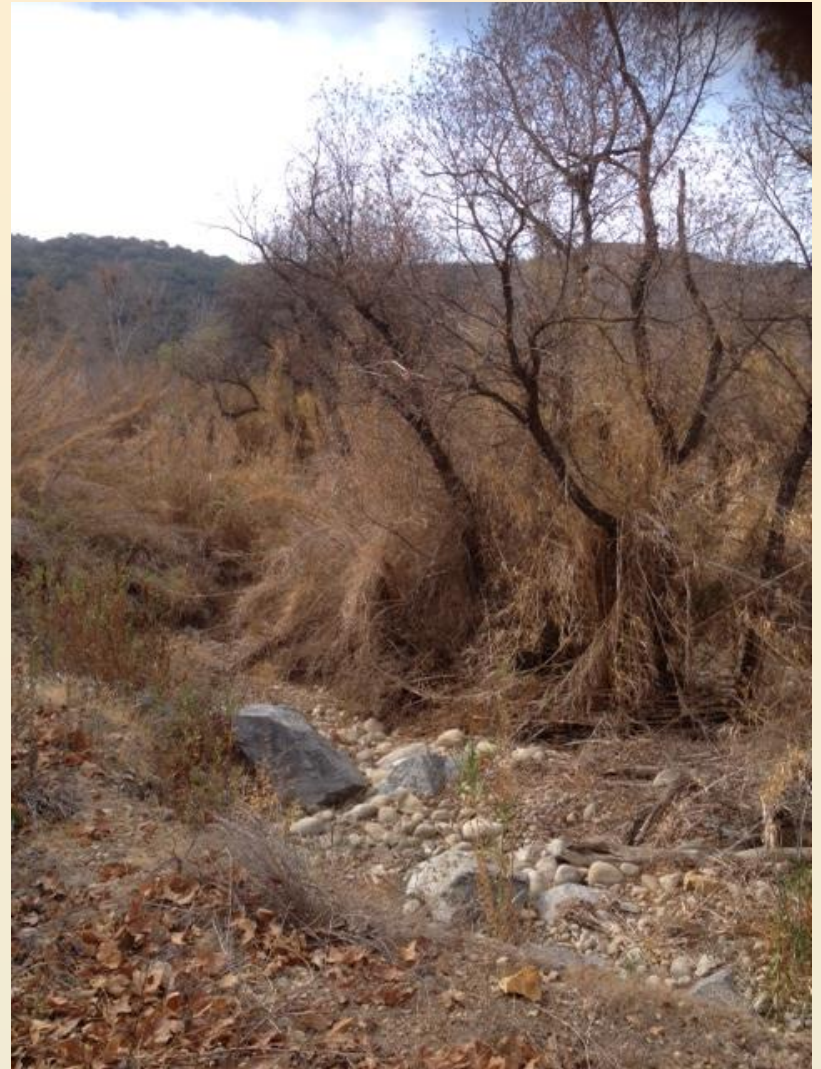
Ventura Co/Ventura River



Ventura Co/Ventura River



Ventura Co/Ventura River



San Diego Co/San Dieguito River



San Diego Co/San Diego River



Native Conversion

Del Dios Gorge



Oak Woodland Fire Fuel Reduction Project

Del
Dios
Park

Jan 2007

Same
Oak
Tree

Sept 2015



Del Dios Community

San Diego Co/San Dieguito

River



San Diego Co/Copper Creek-Tributary into Escondido Creek



San Diego Co/Escondido Creek



**San Diego Co/Tributary into San
Diego River**



**San Diego Co/Santa Maria Creek
Tributary to San Diego River**



Steps to applying

1. Connecting Landowners interested in restoring and enhancing riparian wildlife habitat w/Shea or Sam
2. NRCS site visit(s)
3. Conservation Planning
4. Applying for SWFL funds

Steps to applying



How to Get Assistance

Do you farm or ranch and want to make improvements to the land that you own or lease?

Natural Resources Conservation Service offers technical and financial assistance to help farmers, ranchers and forest landowners.

 [Print this information](#)



Step 1: Make a Plan



Step 2: Start an Application



Step 3: Check your eligibility



Step 4: Rank your application



Step 5: Implement your plan



Key Takeaways

- Who is NRCS?
- “SWFL” – the NRCS Fund Pool for Riparian Restoration
 - Other NRCS wildlife funds: Declining species, Monarch
- NRCS Land eligibility
- Ranking
- Common practices and past projects

Next steps

- Reach out – srapp@pointblue.org or shea.okeefe@usda.gov
- Get projects planned early!

Questions?



Photo by Suzanne Langridge, USGS