

POST-FIRE VALLEY FIRE BOTANICAL SURVEYS

2022-2023



CONTENT

| | |
|--|---|
| | |
| | Valley Fire Discovery Surveys (2022-2023) <ul style="list-style-type: none">• Background & Goals• Methods• Results• Recommendations and Lessons Learned |
| | |
| | |

VALLEY FIRE (VF) DISCOVERY SURVEYS

BACKGROUND & GOALS

- **What?**
 - Post-fire botanical survey effort under a partnership between the SDMMP and US Forest Service.
- **When?**
 - Spring of 2022 and 2023.
- **Where?**
 - On Conserved Lands, within the Valley Fire burn body (2020).
- **Why?**
 - Document if historic occurrences are extant.
 - Document new occurrences.
 - Better understand post-fire rare plant composition.

VF DISCOVERY SURVEYS

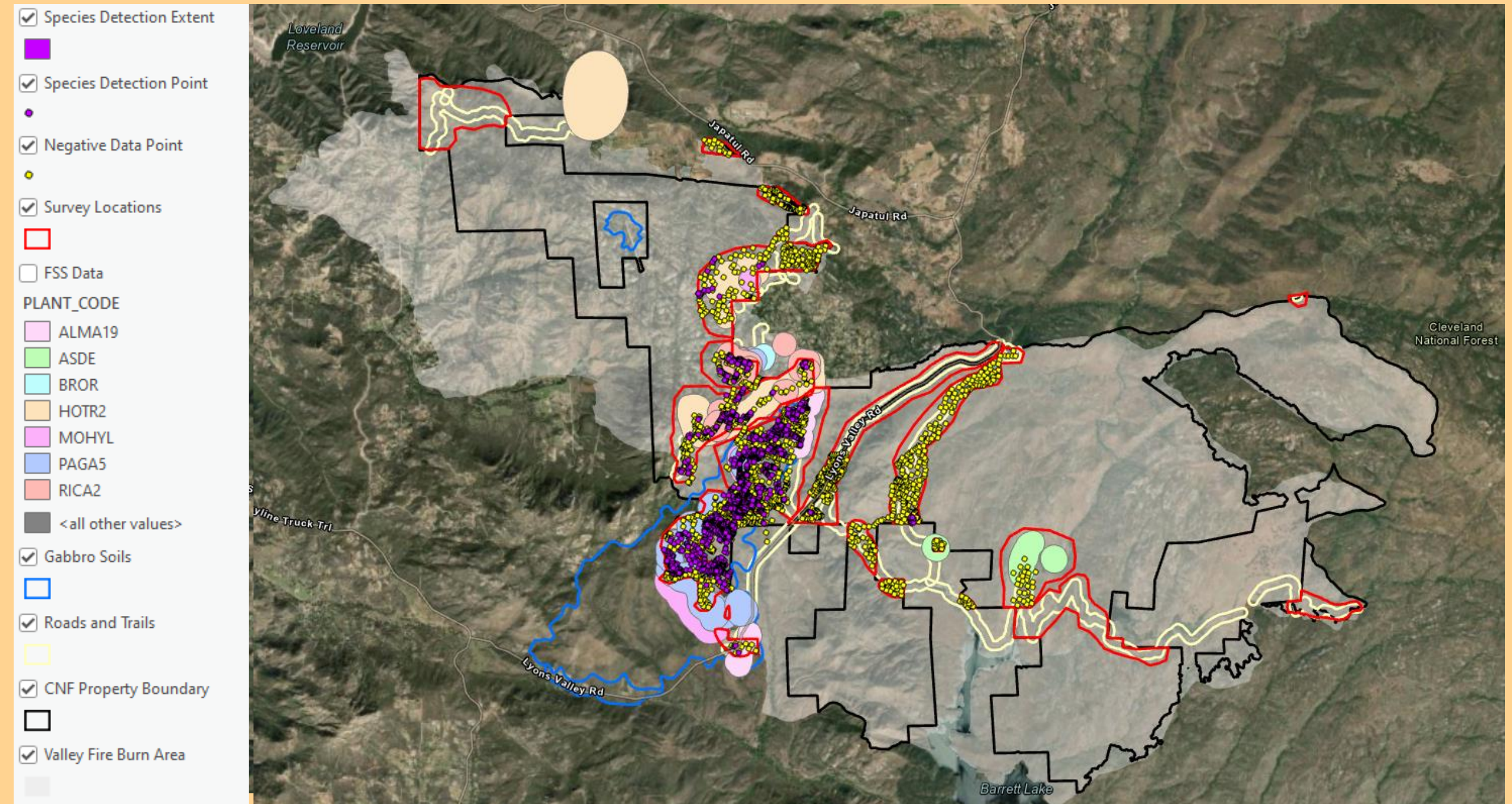
BACKGROUND & GOALS



VF DISCOVERY SURVEYS

Methods

- Survey Areas
 - Soils
 - Access
 - Historical data
- Data Collection
 - Points and polygons
 - Voucher specimens
 - Plant list
- Extras
 - iNaturalist project



VF DISCOVERY SURVEYS

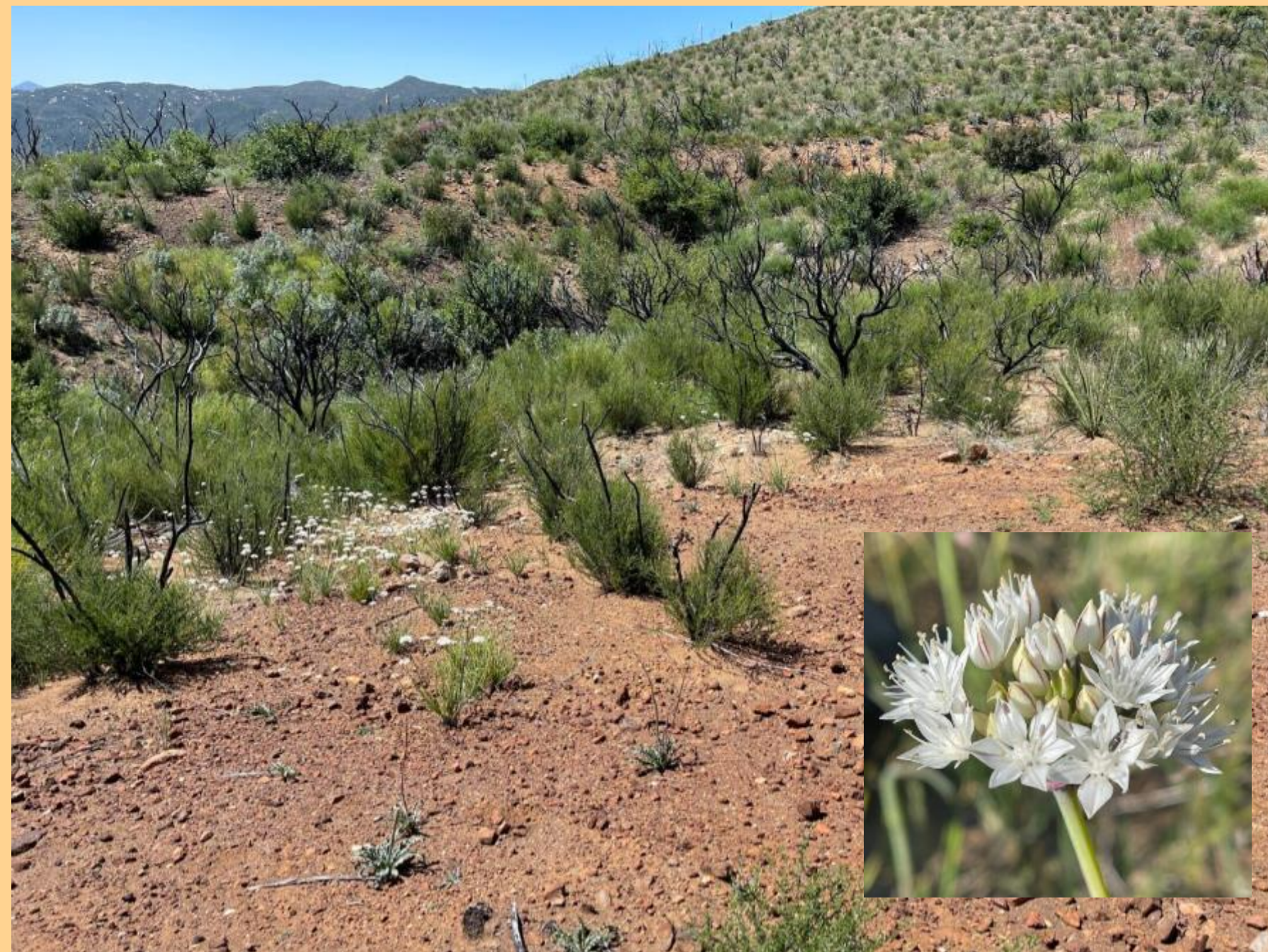
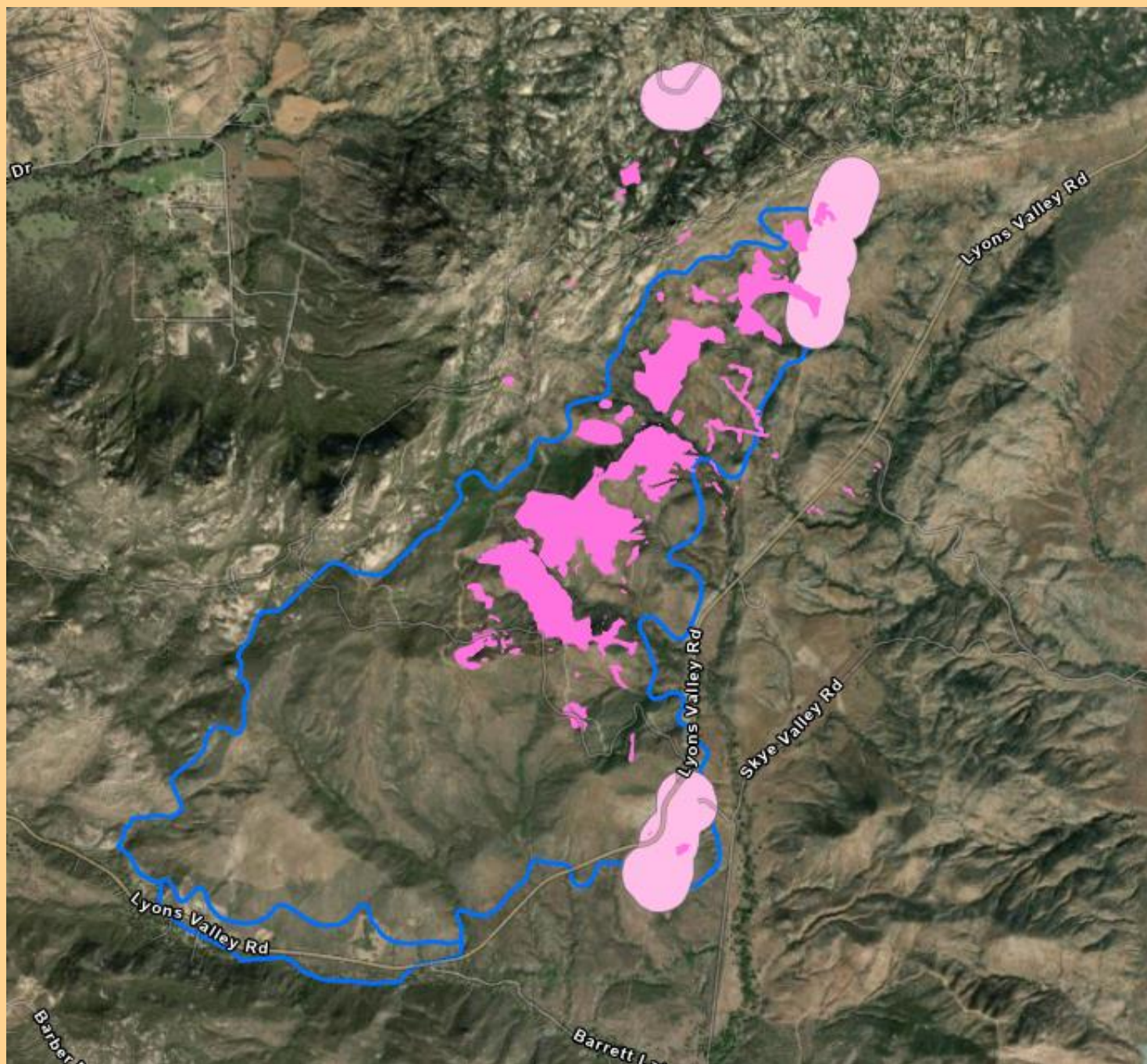
Prioritized Species

| Species | Federal & State Listing Status | Observed During Surveys |
|-------------------------------------|--------------------------------|-------------------------|
| <i>Acanthomintha ilicifolia</i> | FT/CE | |
| <i>Allium marvinii</i> | FSS | • |
| <i>Asplenium vespertinum</i> | | • |
| <i>Astragalus deanei</i> | | • |
| <i>Baccharis vanessae</i> | FT/CE | |
| <i>Bloomeria clevelandii</i> | | |
| <i>Brodiaea orcuttii</i> | FSS | • |
| <i>Ceanothus cyaenus</i> | | |
| <i>Clinopodium chandleri</i> | | |
| <i>Dudleya variegata</i> | | |
| <i>Githopsis diffusa filicaulis</i> | FE/- | |
| <i>Horkelia truncata</i> | FSS | |
| <i>Lepechinia cardiophylla</i> | | |
| <i>Monardella hypoleuca lanata</i> | FSS | • |
| <i>Nolina cismontana</i> | | |
| <i>Packera ganderi</i> | FSS | • |
| <i>Ribes canthariforme</i> | FSS | • |
| <i>Tetracoccus dioicus</i> | | • |

VF DISCOVERY SURVEYS

Results

What we found

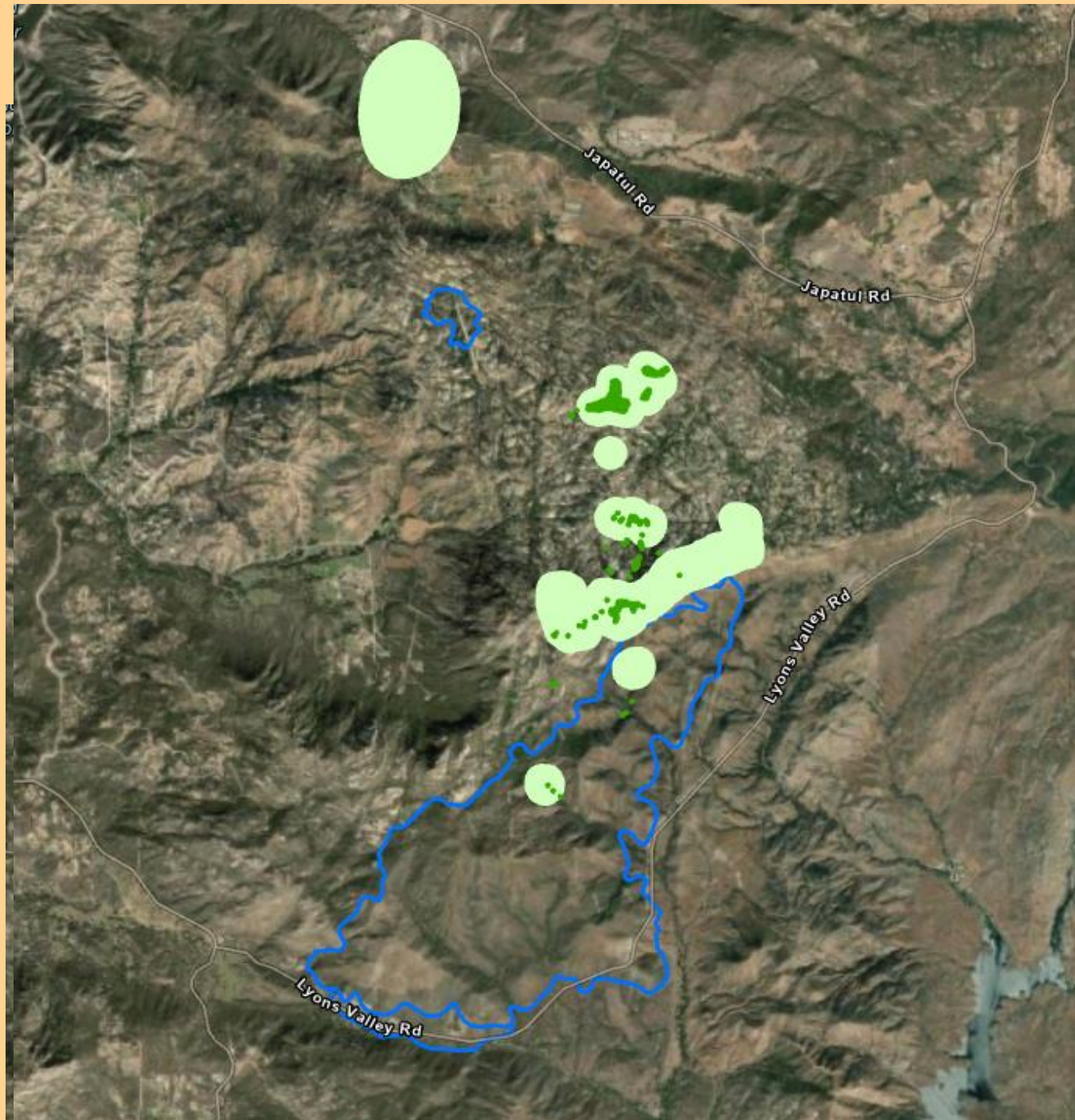


Allium marvinii

VF DISCOVERY SURVEYS

Results

What we found



Horkelia truncata

VF DISCOVERY SURVEYS

Results

What we found

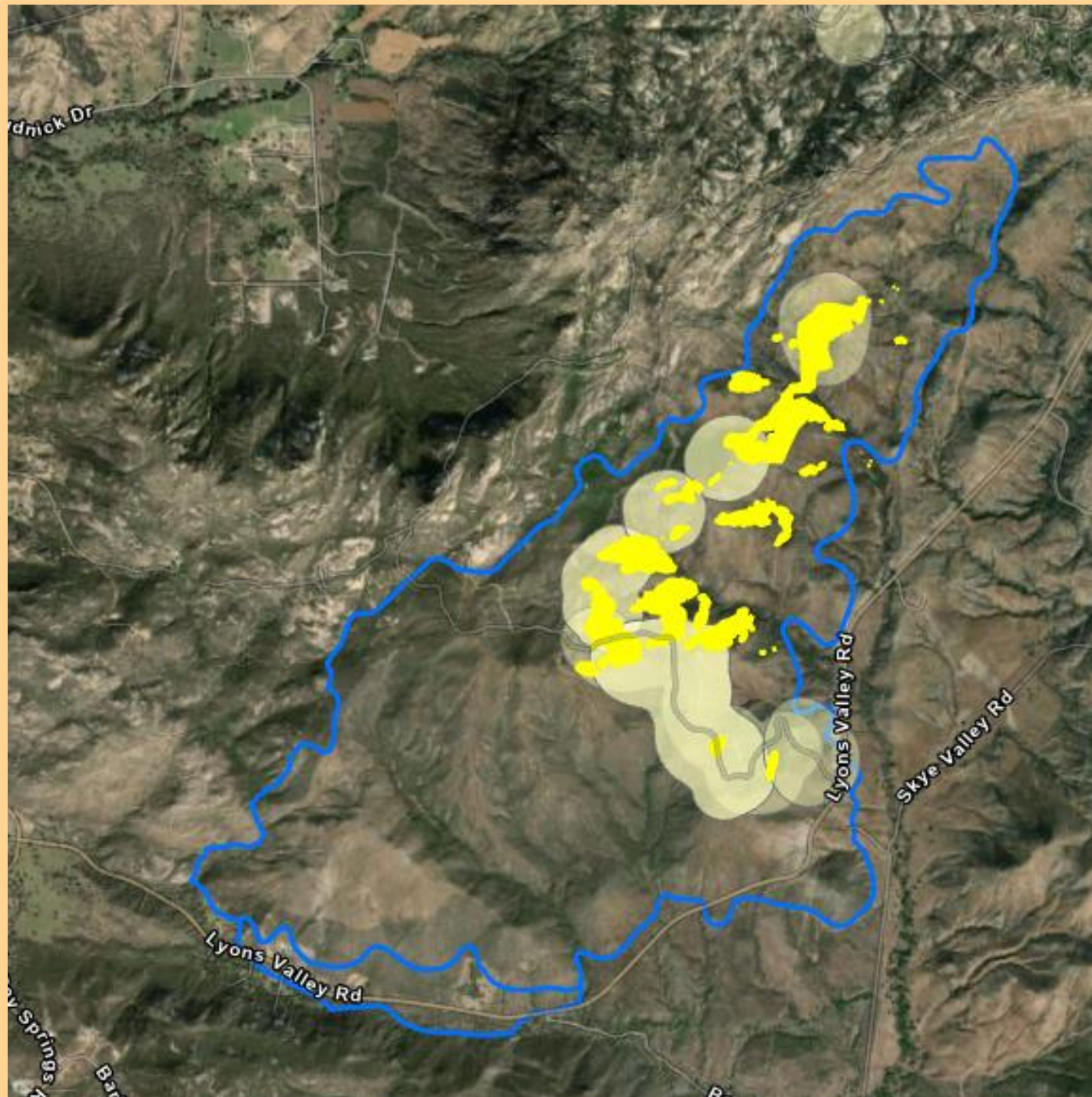


Monardella hypoleuca lanata

VF DISCOVERY SURVEYS

Results

What we found

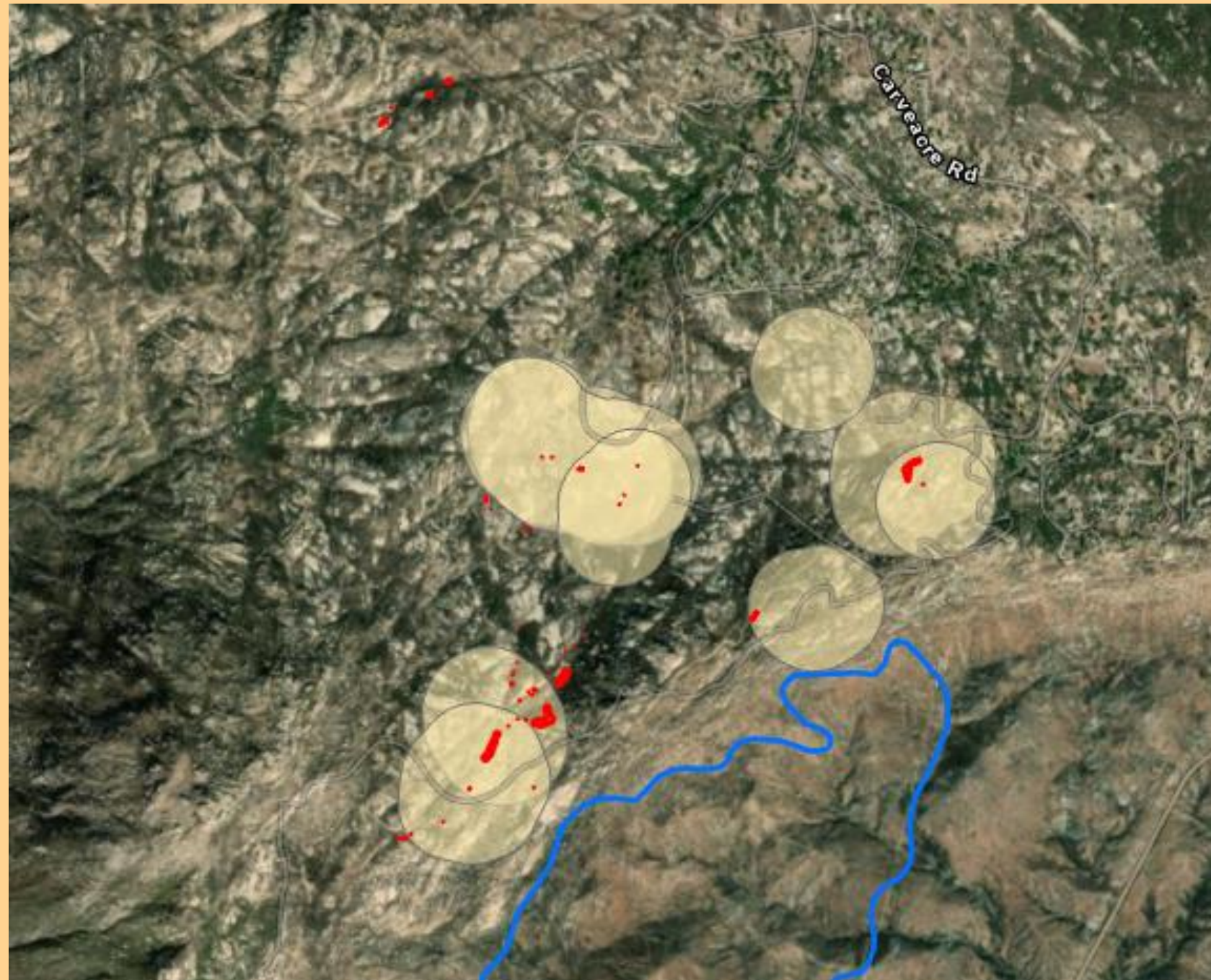


Packera ganderi

VF DISCOVERY SURVEYS

Results

What we found



Ribes canthariforme

VF DISCOVERY SURVEYS

Results



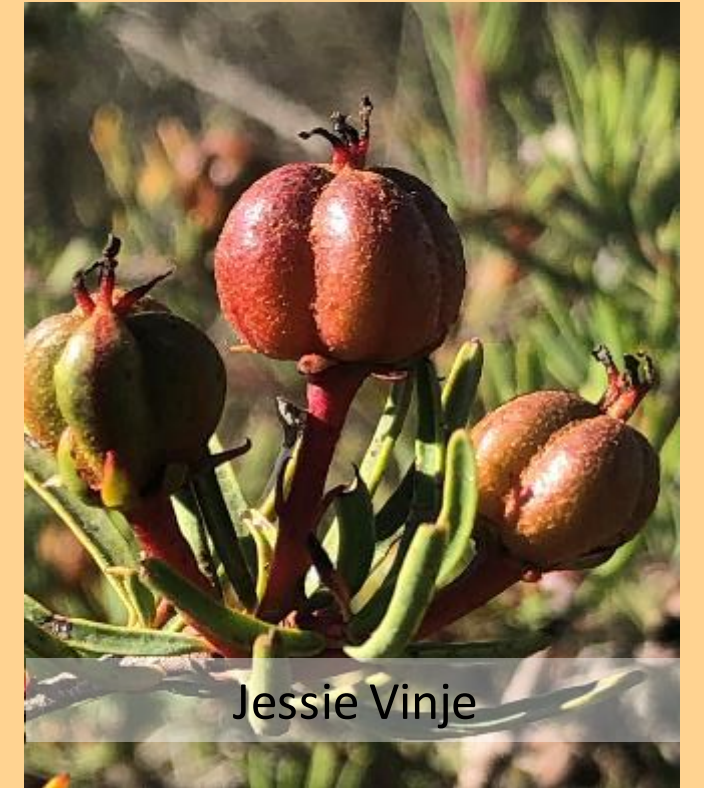
Asplenium vespertinum



Astragalus deanei



Brodiaea orcuttii



Tetracoccus dioicus

VF DISCOVERY SURVEYS

Recommendations and Lessons Learned

POST-FIRE PLANT MATURITY - CONFLICT WITH PROPER IDENTIFICATION (RIBES)

POST FIRE SURVEYS ALLOWS FOR MAPPING MORE ACCURATE EXTENT OF UNDERSTORY SPECIES.

FUNDING SET ASIDE FOR POST FIRE SURVEY OPPORTUNITIES.



Thank you,
SANDAG!