

**San Diego Association of Governments  
Wright's Field MSCP Preserve - Threat Reduction Grant  
Final Report  
Project Period: 8 November 2018 - 7 November 2020  
SANDAG Contract Number: 5005509**

## Executive Summary

*Include a brief introduction to the project and what the project intended to accomplish. Summarize any applicable results and successes as well as any significant conclusions that can be made from the project (i.e. additional management needed, long-term monitoring required etc).*

*Please note that executive summaries for short-term threat reduction projects will likely be less extensive since these projects are shorter term and less complex, but we would still like this to be included in the final report.*

This grant project by Back Country Land Trust (BCLT) focused on long-term planning for resource protection and management at Wright's Field MSCP Preserve in Alpine. Work within the scope of this grant included fuel reduction for wildfire prevention, trail closures and reroutes to separate recreational amenities from biological and cultural resources, and installation of new fencing and signage to protect the most sensitive resources on the preserve from detrimental impacts. With funding from SANDAG, BCLT was able to continue working with local agencies and emergency responders to plan for long-term impacts and opportunities at Wright's Field. Community volunteers, local businesses, and partners from other NGOs all participated in implementing this project with BCLT coordinating and providing leadership for community-based stewardship efforts at Wright's Field over two years.

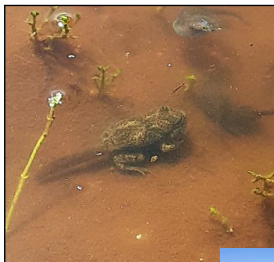


Photo (top left):  
Western Spade-footed Toad at  
Wright's Field.



Photo: Vernal Pools at Wright's Field situated  
with trail aligned directly in the wetland.



Photo Captions:  
(Left) BCLT volunteer with  
new interpretive sign.  
(Top center) BCLT staff and  
volunteers replacing fence  
around SD Thornmint site.  
(Right) Improved trailhead  
signage at Wright's Field.



## Contents

Executive Summary	1
Project Background	3
Project Goals	3
Work Performed by Task	3
Task 1- Recreation Planning	3
Task 2- Trail Work	3
Task 3- Fuels Reduction	3
Task 4 - Signage	3
Task 5 - Coordination with Agencies	3
Task 6 - Administration	3
Conclusions	3
Appendices:	4

## Project Background

*Provide more in depth background on the project including why there is a need for the project, how the project pertains to the goals specified in the MSP, where the project is located/site description and how the project anticipates addressing the issue(s) identified (methods/approach to be used). Use additional sub-headings as necessary to organize the section.*

### Resource Protection at Wright's Field MSCP Preserve

After a significant investment by SANDAG through TransNet EMP funds during the years of 2013-2016, the health and longevity of the two local populations of San Diego Thornmint (*Acanthomintha ilicifolia*) at Wright's Field in Alpine are thriving in 2020. Following this three-year habitat restoration project funded by SANDAG and implemented by BCLT and AECOM, the local populations of *Acanthomintha* were recovered from nearly diminished at this site to over 3,000 individuals growing at Wright's Field today. This first grant cycle of work at Wright's Field represented a salvage operation in bringing the numbers of *Acanthomintha* found at this site to a sustainable level to maintain a viable long-term population on the preserve. After three years of work, and diligent follow up by BCLT and our partners at AECOM, the medium-term outlook was positive after the first three years of restoration and ongoing monitoring post-project. However, additional investment was still needed in resource protection if the *Acanthomintha* and other sensitive biological resources on the preserve were to survive the rapid growth in Alpine and the popularity of our local hiking trails by more and more people each year.

### Identifying Long Term Needs for Threat Reduction at Wright's Field

Following the initial three year restoration and protection of the *Acanthomintha* populations at Wright's Field, BCLT identified several long-term management needs for the future viability and overall population health of the endangered species areas, as well as additional protections needed for other sensitive species and habitats on the preserve, such as vernal pool wetlands and riparian corridors. Additionally, overall community protection efforts were also identified to defend against the possibility of a large scale wildfire igniting on the preserve, and/or other types of anthropogenic impacts to the biological and cultural resources found at Wright's Field. High-level, long-term planning was needed to ensure that quality outdoor recreation could co-exist alongside habitat protection and enhancement efforts, particularly near extant populations of threatened and endangered species on the preserve. Fire fuel reduction efforts have been ongoing at Wright's Field, and BCLT identified several areas where further fuel reduction could be done to protect and enhance buffer zones around the core habitat areas where the *Acanthomintha* populations are found. Trail reroutes were needed to divert hiking and riding away from wetland areas near the vernal pools and also nearest to our riparian habitats. Trail closures were slated to prevent impacts nearest to sensitive resources. Trail repairs were needed to minimize soil erosion and divert water flow from becoming undesirable surface runoff. BCLT also identified the need for interpretive signage to help educate visitors to the preserve about the importance of biological and cultural resources found at Wright's Field. Educating visitors about the unique plants and animals on the preserve was determined to be an important tool in the long-term protection and viability of the listed species found on the preserve, and one that would ultimately not only teach visitors about the importance of our ecological heritage, but also help BCLT to recruit future stewards of the land to participate as volunteers and donors toward such efforts in habitat protection and enhancement in the future.

### Recreation Management at Wright's Field MSCP Preserve

BCLT currently has a Habitat Management Plan for Wright's Field that was adopted in 2012. However, no such plan has existed for the recreation infrastructure on the preserve. As the most significant overall factor in the impact to natural and cultural resources, recreational use of Wright's Field needs to be carefully planned and managed for long-term sustainability. BCLT had identified a strong need for managing trails and other recreational amenities by conducting a high-level assessment of the existing trails and other features on the preserve that are open to the public and then creating a targeted management plan that would ensure minimization of impacts to the most sensitive resources, while also providing exceptional recreational opportunities for the public. Additional goals set forth access improvements for land managers, emergency response, and other authorized users requiring access to manage the preserve.

### Land Stewardship for Threat Reduction at Wright's Field

Working collaboratively with various stakeholders, land managers, partners organizations, and other experts in various field of conservation, BCLT began pursuing funds for long term stewardship and resource protection efforts at Wright's Field. This effort focused on protecting and enhancing the most sensitive resources on the preserve, while also engaging our local community for partnership and educational efforts in land management and habitat

stewardship. Volunteerism was identified as a strong source of support, as well as coordinating and leading efforts with partner organizations to reduce existing threats to species and habitats at Wright's Field and invest in their medium- and long-term protection and enhancement. With support from SANDAG, BCLT staff were able to effectively organize, coordinate, and lead several impactful projects at Wright's Field with the overarching goal of protecting and enhancing our threatened and endangered habitats and listed species on the preserve, as well as enhance the overall community protection from wildfire and other anthropogenic impacts.

#### Coordination with Agencies, Neighboring Land Owners, and Conservation Interests

BCLT engaging in this type of long-term planning effort and community-based stewardship work with financial support from SANDAG could not have been better timed considering the recent purchase of 98 acres by San Diego County Parks & Recreation adjacent to BCLT-owned land at Wright's Field for an active park. Because of EMP support for BCLT to coordinate with local agencies (Task 5), our staff and volunteers were able to participate in various levels of site planning, property surveys, and stakeholder meetings with both county and local planning officials, as well as various Alpine stakeholders and community constituents. BCLT partnership and collaboration with SD County yielded additional biological surveys being conducted on all of the current conservation lands at Wright's Field, including BCLT's 245 acres of preserve lands and the County's 98 acre parcel, meaning that nearly 350 acres of the full park-preserve complex was mapped, surveyed, and taken into consideration in terms of both preservation of biological resources and utilization of existing and potential recreational amenities for public use. Because of these surveys, BCLT was able to support and benefit from two successive years of County-funded surveys for Quino Checkerspot Butterfly (*Euphydryas editha quino*), which discovered 2 individuals in 2019, and 4 individuals in 2020. BCLT was also able to coordinate efforts with Dan Marschalek to conduct biological surveys for Hermes Cooper butterfly (*Lycaena hermes*) in 2020. Unfortunately, this survey did not find any Hermes present at Wright's Field.

## Project Goals

*What are the objectives of the project/expected results.*

This project was funded to address ongoing threats to high-priority MSP species at Wright's Field MSCP Preserve in Alpine, owned and managed by Back Country Land Trust. Development of a Recreation Management Plan (RMP), trail decommissioning and rerouting, fire-fuel reduction, and installation of interpretive signs were projects included within the scope of work of this grant in order to safeguard threatened and endangered species on the preserve.

Task #	Task Name	Task Description	Quantifiable Results / Deliverables
Task 1	Develop Recreation Strategic Plan for Wright's Field MSCP Preserve	Contract and manage development of RMP for BCLT-owned land at Wright's Field in Alpine.	Recreation Management Plan (RMP) for Wright's Field MSCP Preserve.
Task 2	Trail Decommissioning and Rerouting	Close public access to recreational trails in close proximity to high-priority species. Place barriers to access at trail junctions, install signage, and hand broadcast native seed mix for habitat restoration over 0.51 acres of trail.	<ul style="list-style-type: none"> <li>* Decommission 3,000 feet of trail near SD Thornmint habitat.</li> <li>* Reroute 700 feet of trail near Vernal Pool &amp; SD Thornmint habitat.</li> <li>* Broadcast native seed mix over 22,200 sq. ft. (0.51 acres) of trail tread.</li> </ul>
Task 3	Fire Fuel Reduction	Dethatching of non-native grassland and follow-up weed control (hand, line trimmers and/or herbicide) throughout project area.	Fire-fuel reduction and non-native weed control covering at least 58 acres of grassland habitat.
Task 4	Trailside Interpretive Signs	Design & Installation of trailside interpretive signs for public education.	Install 2 trailside interpretive signs adjacent to Vernal Pools & SD Thornmint sites.
Task 5	Coordination with Agencies	Management and monitoring of high-priority species with reporting to regulatory agencies and SANDAG.	All occurrences of high-priority species within the project area recorded in SDMMMP database.
Task 6	Grant Administration	Track and compile data to prepare quarterly reports.	Quarterly reporting & final report submission to SANDAG.

## Work Performed by Task

*Provide in detail, the work completed for each task during the course of the entire project, any issues encountered during task completion and steps taken to address the issue(s), whether the task was completed according to the*

*original scope, whether the task came in at budget, and any results for the individual task. Include additional work that may be needed in the future to maintain the results/condition achieved if applicable.*

### **Task 1 - Recreation Planning**

*Budget: \$20,000*

*Spent: \$20,000*

*Match for Task: N/A*

BCLT contracted AECOM to develop a high-level strategic planning document to provide long-term guidance, foresight, and consistency of vision for recreation management at Wright's Field MSCP Preserve. This plan was developed over the full period of the grant, with AECOM planners visiting Wright's Field several times, and one in-person meeting between AECOM staff and BCLT project managers, Scott McMillan and Jon Green. Several draft reviews took place with input from the BCLT Board of Directors before a final version was complete and accepted for implementation. This plan now stands as a bedrock guiding document in the management and development of recreational resources on BCLT-owned acreage at Wright's Field.

### **See Appendix A - Wright's Field Preserve Recreation Strategic Plan**

### **Task 2 - Trail Work**

*Budget: \$12,500*

*Spent: \$12,500*

*Match for Task: Volunteers provided in-kind labor for trail repairs and trail reroutes.*

BCLT accomplished a significant amount of trail work with support from this grant. Funding for trails and trail maintenance generally is difficult to find and secure, especially for a smaller preserve like Wright's Field. This EMP - Thread Reduction grant has been the largest amount of dedicated funding allocated to trails and trail maintenance at Wright's Field in over a decade. Keeping up on trail maintenance, enforcing trail closures, upkeep on fencing and gates, etc. are all usually difficult projects for BCLT to fund. But by connecting our trails and trail maintenance together with our objectives for natural and cultural resource protection on the preserve, we have been able to create a more comprehensive "trail system" that accomplishes both minimizing impacts to sensitive resources while providing high-quality recreation opportunities for public use and enjoyment.

Volunteers and community workday events played a big role in helping us complete the trail work included in this project. Several volunteer days at Wright's Field brought out 59 new and returning volunteers for two annual community service projects on our trails. With 104 hours contributed in-kind by the community toward trail work, BCLT was able to close 2,787 ft of trail , reroute 105 ft of trail around sensitive vernal pool habitat, and improve / repair another 2,213 ft of trail. In total, that's 5,105 feet of trail impacted by this project at Wright's Field.

Volunteer projects targeted trail improvements near the northern trailhead, closest to downtown Alpine, and volunteers also helped with rerouting downhill trails to go around the vernal pool habitat that was receiving all of the impacts of downhill traffic. BCLT partnered with the SD Mountain Bike Association (SDMBA) and REI, Inc. on a very well-attended volunteer event to repair several hundred feet of trail. This was BCLT's largest volunteer event in over a decade, possibly ever.

Several other trail areas were actively and passively closed to recreation by BCLT staff. These trail closures included several hundred feet of trail nearest to the riparian habitat along Alpine Creek, other trail closure areas included the large grassland section of Wright's Field at the southwestern corner, where parallel trails were increasing habitat impacts near the southern population of the SD Thornmint. Trail sections repaired included areas damaged by illegal OHV activity and a section of trail bulldozed by CalFire as a fuel break during the West Fire in 2018.



Photo Captions: (Left) Trail Closures at the Vernal Pool wetlands were set up, monitored, and constantly reinforced in order to get them to "stick," with general use by the public diminished to near zero. (Center) Volunteer workday events, like this one in February 2020 with SDMBA and REI, helped to maintain a safe and sustainable trail network by preventing erosion and off-trail travel. (Right) Trail closures were put in place in several parts of the preserve, including grassland and riparian habitat, pictured here, with clear signage for the public and vertical mulch to deter trail use.

### **Task 3 - Fuels Reduction**

*Budget: \$14,000*

*Spent: \$14,000*

*Match for Task: Grant funded provided as match for fuels reduction in 2018 and 2019 was provided by the California Fire Safe Council and the Greater Alpine Fire Safe Council.*

With support from this grant, BCLT was able to pull together several organizational partners to provide in-kind contributions to fire fuel reduction projects throughout the preserve. In 2018, BCLT staff worked with the Urban Corps of San Diego County to reduce fire fuels at several areas around Wright's Field. This work primarily focused on the buffer areas surrounding the three *Acanthomintha* sites and other key areas of the grassland habitat where Urban Corps crews worked on de-thatching of non-native grasses and forbs. Several Russian Olive trees (*Olea sp.*)



were also removed and mulched on-site. Hauling and disposal of all cut plant material was provided in-kind by Urban Corps. Funding for this phase of the project was provided by the California Fire Safe Council and the Urban Corps of San Diego County. Fuel modification work was completed over 20.73 acres through this partnership.

In 2019, BCLT worked with the Greater Alpine Fire Safe Council to secure additional in-kind matching funds to create and maintain a significant fuel break around the northern and western boundaries of Wright's Field. Working in partnership with GAFSC and their contractors, BCLT was able to coordinate and supervise work crews for fuel modification work over 18.85 acres. This work was funded by the US Forest Service and implemented by the Greater Alpine Fire Safe Council and Alpine Fire Protection District.



Photo Captions: (Left) Dense thatch in grasslands around the *Acanthomintha* restoration area outcompetes native populations and creates easily ignitable fire fuels. (Center) Fuel reduction work in progress during 2018/2019 field season; buffer areas detached and raked to concentrate non-native seed dispersal. (Right) After project work, all cut biomass was raked and hauled offsite prior to peak fire conditions in fall 2018.

Following the significant fuel reduction efforts of the previous two years, BCLT was able to contract a small, local firm to conduct ongoing fuel reduction efforts, with a goal to restore the native habitat conditions and keep regrowth of non-native annuals at bay. Throughout 2020, Firebreak Solutions provided ongoing habitat management and fire-fuel reduction work over several previously cleared areas to maintain the viability of the fuel breaks along the perimeter. They were also able to take on some clearing of newer areas, especially in response to the Valley Fire in September 2020. BCLT worked with FireBreak Solutions to significantly reduce available fire fuels at each of the vehicle access points to the preserve, as well as clearing along the eastern boundary nearest to the new County parkland, and along the southern edges of the preserve at Wright's Field and the adjoining Findel Ranch property also owned by BCLT. Selective clearing and habitat preservation work by Fire Break Solutions covered 14.17 acres of Wright's Field, favoring long-term viability of native species while maintaining a low fire risk.

#### **Task 4 - Signage**

*Budget: \$5,000*

*Spent: \$5,000*

*Match for Task: Volunteers provided in-kind match for signage design and installation.*



This task was one that proved to be more challenging and also more rewarding than we originally anticipated. Getting started on the design of two new interpretive panels to be installed at Wright's Field took time and patience for BCLT to find the right person with the skill set to not only manage a logistical project of this nature but also with graphic design and research skills capable of designing a permanent public outreach installation that was accessible and educational to all trail users on the preserve. In the end, BCLT was able to leverage grant support from SANDAG into coordination and supervision of not only one, but two different Scout projects that helped us design and install several new signs for visitors to Wright's Field.



Photos: (Left) Venture Scout, Emily Holmes, puts the final touches on the new signs. (Above) Volunteers pose with new sign posts they installed.



Photos: (at left) New signage marks the SD Thornmint restoration area. (Above right) Sign at ribbon cutting.

Working with Venture Scout, Emily Holmes, BCLT was able to partner with a remarkable young woman and support her in a community service project for the benefit of Alpine. Luckily, Emily brought artistry, enthusiasm, and a can-do spirit to every aspect of this design and installation project. Working with BCLT staff, Emily designed two large interpretive panels to educate visitors to Wright's Field about our threatened and endangered habitats on the preserve; both the San Diego Thornmint restoration site and the vernal pool wetland area. These signs took dozens of hours to design and edit, and several trips to gather materials, install posts and sign frames, and eventually to install and dedicate the signs themselves. BCLT was fortunate to work with Emily on this project and to provide her with a meaningful and memorable project that earned her a lifetime achievement of her Venture Scout Conservation Award.

### See Appendix G: Detail of New Interpretive Signs at Wright's Field.

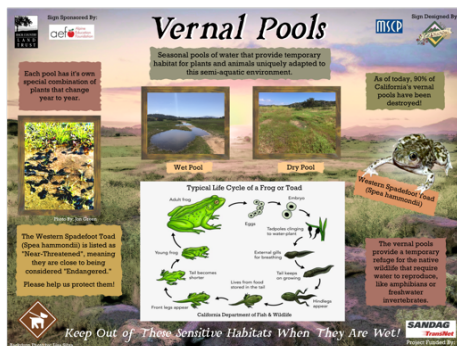


Photo Captions:  
(Left) Interpretive Panel for Vernal Pool habitat at Wright's Field.

(Right) Educational Sign for San Diego Thornmint at Wright's Field.

See Appendix G for detailed images.



Coincidentally, another aspiring Boy Scout, Archie Lenore, also approached BCLT about doing a community service project to earn his Eagle Scout award in 2020. Working with Archie, we decided together that an achievable project would be to design and install several trail markers around Wright's Field to assist visitors in navigating the trail system on the preserve. As a first step toward implementing the objectives outlined in the AECOM plan for managing recreation at Wright's Field, these trail markers will now permanently designate the primary trails, provide trail names for historical and environmental interpretation, and help visitors to navigate and orient themselves (in conjunction with our trail maps) over the full extent of the preserve. Working to support Archie on this signage project, BCLT received seven new trail post markers, and Archie was able to complete his Eagle Scout project through this community service project.



Photo Captions:  
(Left) New Trail Marker signs indicate historical and environmental features on the preserve.  
(Right) Trail users will be able to navigate the trail system on the preserve easier, integrating Wright's Field trails into the overall community.



Support from SANDAG for BCLT land management and coordination efforts with our community volunteers and partners on this project made it possible for us to allocate staff time, material resources, and organizational relationships for the overall benefit of the community. These new signs will all help to protect our ecological resources by keeping visitors on existing trails, educating them about sensitive species and habitats on the preserve, and by connecting our community members to the landscape through shared experiences and hands-on service learning. These signs are now important educational assets at Wright's Field, and with a whole team of volunteers coming together to achieve such impressive results, this was one of the most rewarding aspects of this project, both personally and professionally, for not only BCLT staff and volunteers, but all of our family and friends who participated and celebrated with us.

## **See Appendix F: Locations of New Interpretive Signage**

### **Task 5 - Coordination with Agencies**

*Budget: \$5,000*

*Spent: \$5,000*

*Match for Task: In-Kind contributions were provided by San Diego County through the inclusion of BCLT-owned lands within the Fire & Emergency Operational Assessment developed for the new County Park lands adjacent to Wright's Field.*

BCLT was able to coordinate with various agencies on efforts related to planning and project implementation at Wright's Field through this grant. Some examples of agency coordination that were funded under this project include: interfacing with AECOM land management staff for ongoing habitat restoration and management of San Diego Thornmint (*Acanthomintha ilicifolia*) populations at Wright's Field; coordination with AECOM planning staff on the development of the Recreation Strategic Plan for BCLT land at Wright's Field.

Coordination with organizational partners, like AECOM, was ongoing throughout the grant period. BCLT coordination with AECOM staff was two-fold. This task supported BCLT staff time in interfacing with AECOM on the input and development phase of the Recreation Strategic Plan for Wright's Field MSCP Preserve (task 1). BCLT provided current maps, ownership documents, deed restrictions, land management objectives, etc. to AECOM planning staff as a basis for the RSP planning process. BCLT also coordinated efforts with AECOM field crews on habitat restoration and land management objectives such as periodic monitoring of *Acanthomintha* populations on BCLT lands, de-thatching and hand weeding core habitat areas, follow up herbicide spot treatments, and early detection and removal of newly established Stinkwort (*Dittrichia graveolens*) on the preserve.



Photo Captions:  
(Far left) WF Recreation Planning Mtg with AECOM, October 2019.

(Left) Meeting with San Diego County Park Planners and first responders for Emergency Preparedness planning at Wright's Field during June 2020.

Also supported by this grant were BCLT efforts to coordinate biological surveys with SD County biological consultants for Quino Checkerspot butterflies and associated host plants throughout both the County-owned lands and BCLT-owned lands covering the full extent of Wright's Field. Coordination was also conducted with Dan Marschalek for Hermes Copper butterfly surveys across the full acreage of Wright's Field, including BCLT owned hilltops where Hermes were last sighted in 2010. Unfortunately, the Hermes survey yielded no sightings in 2020. However, two observances of Quino Checkerspot butterfly were recorded in 2019, and 4 recorded in 2020.

BCLT staff also worked with SD County Parks & Recreation staff to provide input on land management issues and history of use at the new County-owned acreage for development of public parkland adjacent to the BCLT-owned portion of Wright's Field. Critical input was provided and final review of SD County Parks & Recreation planning documents. Specifically, this included the new "Fire and Emergency Operational Assessment," developed by Rhode &

Associates, for the full extent of the park-preserve complex across all contiguous open-space lands at Wright's Field, including County-owned and BCLT-owned lands.

## **See Appendix B - Alpine County Regional Park, Fire & Emergency Operational Assessment**

### **Task 6 - Administration**

*Budget: \$4,500*

*Spent: \$4,500*

*Match for Task: BCLT provided in-kind match on grant administration and reporting above and beyond the budgeted line item for grant administration.*

BCLT worked on creating Quarterly Reports for each invoice period throughout the grant. Work on this item included progress reports for each task, compiling project photos, preparation of invoices and receipts. Labor compliance implementation and administration of regulatory reporting requirements was performed in coordination with GAFCON and project contractors.

BCLT staff wrote the final grant report and compiled project metrics for SANDAG, including final invoice, before and after photos of project areas, final grant report and report appendices.

*[Photos and figures are invaluable to SANDAG staff. Please include photos in the final report and any figures (if applicable). Both photos and figures may be included throughout the document or at the end following the Discussion/Conclusion section. Photos taken at the same place or photo point throughout the grant period assist SANDAG staff in tracking the project's progress over time. If "photo points" were established at your project site, please include a before and after comparison sequence from the start and completion of the project. **Photos should include a description of the corresponding task, date, and activity in the photo. Figures should include a caption with a brief description.**]*

### **Conclusions**

*Provide overall conclusion for the entire project. Was it successful and did it accomplish the specified goals? What could have been done differently to improve the project outcome? How have the results contributed to the conservation of MSP species and has it enhanced recovery/prevented further decline? What work still needs to be done, what are the future management recommendations?*

Overall, BCLT accomplished all of the objectives set forth in the grant agreement. There were challenges to implementing this project, but in the end we exceeded our target goals for every task, including trail closures and improvements, number of acres receiving fuel modification, and installation of signage. Community outreach and agency cooperation is at an all-time high level for BCLT, and these relationships are opening opportunities for continued land acquisition, habitat restoration, and conservation management work in the future.

This project has served as a long-term investment in the previous SANDAG TransNet EMP grant received by BCLT and AECOM in 2013 that was the original impetus for preserving and restoring the nearly diminished San Diego Thornmint (*Acanthomintha ilicifolia*) at Wright's Field in Alpine. As a follow up effort in protecting the sensitive biological resources on the preserve, this project has significantly reduced existing threats to the extant species found at Wright's Field, as well as added cultural barriers (new fencing, trail realignments, etc.), and high-level management plans (recreation planning, emergency operational planning, etc.) to the long-term protection and preservation of both listed species, such as the *Acanthomintha* populations, and also candidate species, such as Western Spadefooted Toad (*Spea hammondi*), and host plant species, such as Dot Plantain (*Plantago erecta*) and Spiny Redberry (*Rhamnus crocea*). Ongoing maintenance and continued reinvestment in the health and longevity of the species and habitats found at Wright's Field has significantly improved the long-term outlook for the health and viability of the most sensitive species on the preserve.

Building on these efforts, BCLT will continue to manage the preserve for the benefit of both native flora and fauna found on the preserve, as well as sustainable outdoor recreation for the public to enjoy and connect with nature. Education and stewardship efforts will continue, with the community engaged directly in the land management and habitat protection efforts ongoing at Wright's Field. BCLT continues to be a leader in environmental matters in Alpine and the East County, and our board and staff will be coordinating with local business, government, and other NGOs at all levels to ensure the long-term health and viability of both the threatened and endangered species on the preserve. Future restoration objectives have been determined for both recreation management as well as habitat restoration goals, and BCLT will be pursuing funding to continue this work in the coming years.

## **Appendices:**

*Please include additional materials necessary as separate appendices and reference them in the report as needed. Examples may include outreach materials, management plans, data sets etc.*

**Appendix A:** Wright's Field Preserve Recreation Strategic Plan; developed by AECOM for BCLT

**Appendix B:** Trail Map Detail; Recreation Strategic Plan; developed by AECOM for BCLT

**Appendix C:** Fire Fuels Reduction Maps - 2018, 2019, & 2020

**Appendix D:** Fire Fuel Reduction Map - Aggregated 2018-2020

**Appendix E:** Completed Trail Work Map

**Appendix F:** Location of New Interpretive Signage

**Appendix G:** Detail of New Interpretive Signs at Wright's Field



**Appendix H:** Alpine County Regional Park, Fire & Emergency Operational Assessment;  
developed by Rhode & Associates for San Diego County Parks & Recreation

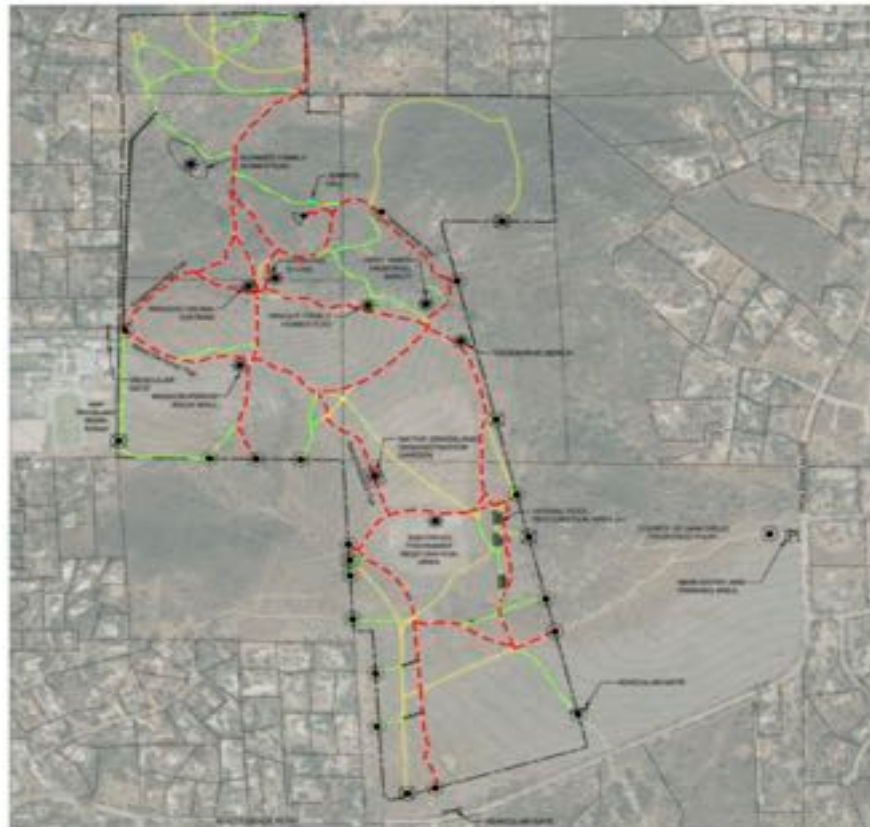
**Appendix I:** Print Media Coverage of Project Work at Wright's Field

**Appendix J:** Cumulative Impacts of the Project, 2018-2020

---

*Appendix A: Wright's Field Preserve Recreation Strategic Plan; developed by AECOM for BCLT  
- Attached as separate document*

*Appendix B: Trail Map Detail; Recreation Strategic Plan; developed by AECOM for BCLT*



LEGEND	
MAJOR TRAIL	Red dashed line
MINOR TRAIL	Green dashed line
PROPOSED TRAIL	Yellow dashed line
CLOSE TRAIL	Black dashed line
OFFSITE TRAILS/ACCESS RD	Black solid line
INTEREST POINT	Black dot
PARKING	Black circle with 'P'
MAIN ENTRY POINT	Black circle with 'M'
CLOSE ENTRY POINT	Black circle with 'C'
INFORMAL ENTRY POINT	Black circle with 'I'
POTENTIAL ENTRY POINT	Black circle with 'P'
GATE	Black circle with 'G'
ELEVATED WALKWAY	Black solid line



WRIGHT'S FIELD PRESERVE RECREATION STRATEGIC PLAN  
BACK COUNTRY LAND TRUST

PROPOSED TRAILS  
AUGUST 2020  
FIGURE 3



Appendix C: Fire Fuels Reduction Maps - 2018, 2019, & 2020







*Appendix D: Fire Fuel Reduction Map - Aggregated 2018-2020*





*Appendix E: Completed Trail Work Map*

*Appendix F: Location of New Interpretive Signage*





## San Diego Thornmint

(*Acanthamintha ilicifolia*)



It only occurs naturally in San Diego County & Northern Baja.

It is one of the most endangered plants in San Diego County!

Wright's Field is a Sensitive Habitat!

**Major Threats:**

- Building and Development

**Other Threats:**

- Off-road Vehicles
- Invasive Species
- Wildfire
- Climate Change

**INVASION**

Thornmint typically blooms from March to May.

San Diego Thornmint is an annual herb in the mint family.



ESA Regulations Sec. 11(b). "Killing or taking of any endangered species is punishable by law. Any person who knowingly violates any provision of this act can be fined up to \$50,000 and/or imprisoned for one year, or both."

It prefers friable (crumbly) clay soils, primarily dry, open grassland.

*An Endangered Species Lives Here! Please Stay On Trails!*



## Vernal Pools

Seasonal pools of water that provide temporary habitat for plants and animals uniquely adapted to this semi-aquatic environment.

Each pool has it's own special combination of plants that change year to year.



Wet Pool



Dry Pool



The Western Spadefoot Toad (*Scaphiopus hammondi*) is listed as "Near Threatened", meaning they are close to being considered "Endangered". Please help us protect them!



Typical life cycle of a frog or toad

As of today, 90% of California's vernal pools have been destroyed!



The vernal pools provide a temporary refuge for the native wildlife that require water to reproduce, like amphibians or freshwater invertebrates.



Appendix H: Alpine County Regional Park, Fire & Emergency Operational Assessment;  
developed by Rhode & Associates for San Diego County Parks & Recreation  
- Attached as separate document

Appendix I: Print Media Coverage of Project Work at Wright's Field





*Appendix J: Cumulative Impacts of the Project, 2018-2020*

