

Deliverables Coversheet

Task 1: Project Coordination, Invoicing and Reporting		
1	Press release	Attached, page 126
1	Info sheet	Attached, page 127
1	Flyer	Attached, page 128
1	Meeting sign-in sheets and documents	Attached, page 129-130
1	Project update e-mail sign-up list	Attached, page 131
1	Quarterly reports	Previously submitted (first Quarterly report submitted with Invoice #2, second and third Quarterly reports submitted electronically)
1	Invoices	Invoices #1, 2, and 3 previously submitted
1	Final report	Attached, pages 132-138
Task 2: Debris Removal		
2	Report pounds of trash removed	Included in Final Report (attached, pages 132-138)
2	Map of sites removed	Included in Final Report (attached, pages 132-138)
Task 3: Invasive Removal		
3	Square feet of invasive plants removed	Included in Final Report (attached, pages 132-138)
3	Map of locations of plants removed	Included in Final Report (attached, pages 132-138)
Task 4: Volunteer Coordination		
4	Volunteer sign-in sheets	Included in volunteer match documentation, see pages 75-123
4	Volunteer event logs	Included in volunteer match documentation, see pages 75-123
4	Training records	Included in volunteer match documentation, see pages 75-123
4	Volunteer Park Patrol log-in sheets	Included in volunteer match documentation, see pages 75-123
Task 5: Access Control		
5	Photographs to document access control fencing installed and .878 of an acre restored	Included in Final Report (attached, pages 132-138)
5	Map with location of work completed	Included in Final Report (attached, pages 132-138)
Task 6: Maintenance and Monitoring		
6	River Blitz survey logs	Attached, page 139-143
6	Field notes and logs for weekly monitoring by Park Patrol volunteers	Attached, page 144-181

FOR IMMEDIATE RELEASE

July 24, 2012

Contact:

Rob Hutsel, Executive Director
The San Diego River Park Foundation
Phone (619) 297-7380
Mobile (619) 244-7024
rhutsel@sandiegoriver.org
www.sandiegoriver.org



Large Scale Habitat Restoration Begins in Mission Valley

River Park Foundation to manage year-long \$123K project to protect hidden preserve

San Diego, CA—Though nearly 200,000 vehicles drive by on a daily basis, not many people in San Diego know of the existence of the Mission Valley Preserve (MVP). The Preserve is a 51-acre piece of land that straddles the San Diego River bordered by the 5 and 8 freeways and Friars Road. Home to many rare or endangered plant and animal species, the Mission Valley Preserve, like many nature preserves in California that are completely surrounded by urbanization, faces threats from invasive, nonnative plant species, trash and homeless activity.

The San Diego River Park Foundation, supported by SANDAG's TransNet Environmental Mitigation Program and in partnership of the City of San Diego, will be officially beginning the \$123,000, year-long restoration grant to help address those issues in the Mission Valley Preserve with a river cleanup and site tours on Saturday, July 28th from 9am-Noon. Volunteers and other community members are encouraged to join in on this event and meet at the staging area on the San Diego River Trail at Pacific Highway near the Secure Self Storage located at 4835 Pacific Highway.

Requirements of the grant call for community stewardship elements to engage volunteers in caring for this critical habitat area by helping to remove targeted invasive, nonnative plants and trees including many large nonnative Palm and Pepper Trees that displace native vegetation and provide opportunities for illegal camp sites. Other elements of the restoration grant include community trash removal events, provisions for access control to close illegal trails, re-vegetation projects and the establishment of a citizen Park Watch Program whose participants will provide information to the River Park Foundation on the presence of trash, illegal dumping, graffiti and other issues.

"This grant will not only help the preserve to remain as a place for plants and wildlife but the MVP is also a very important component of the planned San Diego River Park System", said Rob Hutsel, Executive Director of the San Diego River Park Foundation. "Our organization and our many volunteers have been working in the preserve for several years having removed over 200,000 pounds of trash and many tons of invasive, nonnative vegetation to date. We've also installed and maintain park elements such as interpretive signage and community mural and landscaping projects to help connect people to the preserve and hopefully have them become stewards of this incredible natural resource. Thanks to the support of SANDAG and the City of San Diego, we can continue our work to restore and enhance the preserve and to engage the community in caring for it".

At a Glance:

Mission Valley Preserve Restoration Grant Project Tours and River Cleanup Event

Date—Saturday, July 28

Time—9am-Noon

Location—Near 4835 Pacific Highway, 92110

Volunteers should dress for working outdoors, closed shoes required. All tools and supplies provided.

###

About The San Diego River Park Foundation

The San Diego River Park Foundation's mission is to engage people to work toward a better future for the San Diego River and the creation of a 52 mile river parkway from the mountains to the ocean. The River Park Foundation is a non-profit community-based organization that was founded in 2001. Since its founding, it has grown in membership to more than 3000 people and annually organizes volunteers who contribute more than 20,000 hours of service to San Diego. Visit www.sandiegoriver.org.



Least Bell's Vireo, Photo Wendy Easterly

Mission Valley Preserve

Restoration Project

It Takes a Community to Preserve our Natural Heritage

The Mission Valley Preserve (MVP) is a 51-acre open space that straddles the San Diego River and is home to many rare or endangered plant and animal species like the Least Bell's Vireo. The MVP faces threats from invasive, nonnative plant species, trash and illegal dumping.

The San Diego River Park Foundation, supported by SANDAG's TransNet Environmental Mitigation Program and in partnership of the City of San Diego, will undertake a year-long restoration project to help address those issues in the Mission Valley Preserve.

How you can help:

Community stewardship is a critical element of this effort. We need your help to care for this sensitive habitat area by helping us to remove vegetation that harms this special ecosystem. Other elements of the restoration project include community trash removal events, volunteer planting projects and the establishment of a citizen Park Watch Program to report a the presence of trash, illegal dumping, graffiti and other issues.



Actions You Can Take Now:

- Attend a Clean and Green Team River Clean-up or Invasive Plant Removal Work Party.
- Be the eyes and ears of the preserve, become a Park Watch volunteer
- Help with remove graffiti and install trail markers and info signs or attend a Restoration Planting Event
- Sign up for the River Park enews by visiting: <http://www.sandiegoriver.org/enews.php>

Funding made available through
the TransNet Environmental
Mitigation Program



A Project of:
The San Diego River Park Foundation
in partnership with
The City of San Diego Park and Recreation Department



Visit our event calendar to learn more about these
upcoming events at the Mission Valley Preserve

www.sandiegoriver.org/calendar.php

For more information or to
volunteer, please contact:
The San Diego River Park
Foundation

volunteer@sandiegoriver.org or

call 619-297-7380

www.sandiegoriver.org

Celebrate

TransNet Grant Kickoff with the **Clean and Green Team**

WHAT:

San Diego River Park Foundation supported by SANDAG TransNet Environmental Mitigation Program land management grant funding and in partnership of the City of San Diego and Friends of Mission Valley Preserve will be kickoff this year long restoration project for Mission Valley Preserve through a volunteer service project and site tours on Saturday, July 28th from 9am-Noon. Volunteer will meet along the River Trail at Pacific Hwy. Then we will split into groups and work east through the Preserve and west through the San Diego River estuary to tackle 10 identified trash sites and anything else we find along the way. Project Site Tours including stops at 2 murals and the river will be held throughout the event for all attendees. Participants in this event will be invited back during the fall and winter for invasive removal, surveys and planting events of the degraded areas cleaned during this summer clean-up event.

WHY:

The Clean and Green Team is the only clean-up group dedicated to cleaning up the entire San Diego River. Trash enters and pollutes the San Diego River from all types of sources until this litter and pollution stops we need your help to pick it up!

This is a big site so we need as many volunteers to help us as possible.

HOW:

A Project of the San Diego River Park Foundation in partnership with the City of San Diego Park and Recreation Department

For more information contact: The San Diego River Park Foundation

619-297-7380 | info@sandiegoriver.org | www.sandiegoriver.org

 Find us on Facebook <http://www.facebook.com/sdriverpark>

WHERE:



Volunteers will meet near the Secure Self Storage facility at 4835 Pacific Highway, 92110.

WHEN:

9:00AM -12:00PM



**REMOVING TRASH
BY THE TON!**

Volunteers are needed to assist the Clean and Green team in caring for this nature preserve.



MEETING SIGN-IN SHEET

Group: HOMELESS TASK FORCE
Facilitator:

Meeting Date: 3-21-13

Place/Room: TEBOWTE NATURE CENTER

Name	Company	Phone	Fax	E-Mail
CARLO EMAMI	CITY OF SD	619 750 2144		CARLOEMAMI@GMAIL.COM
SCOTT LOCKWOOD	SOPD	619 911		
Darnell Longmy	SOPD	911		
MARGIE CLEAR	ESD	858 518-7789		M CLEAR@SANDIEGO.GOV
Andy Quinn	City of SD	858-581-9961		A.Quinn@sandiego.gov
Doug Taylor	SD RPTF	619-207-8215		doug@sandiegorever.com
Kelly Monahan	Envir	858-492-5012		KMonahan@SD
Maxine Brown-Williamson	City DSD	8-573-12012		
ENNIS JACKSON	MTS ENFORCEMENT	(619) 247-3566		DENNIS.JACKSON@SDMTS.COM
SCOTT LOWE	FIRE / RESCUE	858-581-9942		SLOWE@SANDIEGO.GOV
Kelly Wood	City PER	858 573 1407		KWood@sandiego.gov
Michael Cook	Park Rec	619 685 1304		MCOOK@SANDIEGO.GOV
BON STEVENSON	FRIENDS OF MVA	888-232-9192		BONMVPRESERVE@GMAIL.COM
ED MURPHY	Volunteer	619 224 5213		
JAVIER RAMOS	Volunteer	619-471-7091		javierpabloramos@gmail.com
Janice Lavallee	Park Ranger	(8) 581-9961		jlavallee@sandiego.gov
Geoff Hasenauer	Park Ranger	(8) 581-7979		ghasenauer@sandiego.gov
TRACEN WALKER	" "	(8) 581-9952		TWALKER@SANDIEGO.GOV
Jack Straw	Council District 7	(619) 236-6751		JTstraw@SanDiego.gov

MEETING SIGN-IN SHEET

Group:

Meeting Date:

Facilitator:

Place/Room:

Name	Company	Phone	Fax	E-Mail
Carol WRIGHT	Park Rec. CPI	(659) 581-9919		CWRIGHT@ sandiego.gov
JOHN LEHNHERR	TRANSIT SECURITY			JOHN.LEHNHERR@ SDMTS.COM
Betsy Miller	PR - OS	619 685 1314		bmiller@sandiego.gov

River Blitz Survey Data--Trash
April 2013

Waypoint #	Location Name	Latitude	Longitude	Segment ID	Survey Date	Trash Type	# of bags of trash	Comments	Photo #
350	Dumping	32.76267	-117.19782	3	4/7/2013	Dumping	3	Dumped garbage	
369	Dumping	32.76175	-117.20065	3	4/7/2013	Dumping	2	Chair with active beehive	
353	Encampment	32.76219	-117.19831	3	4/7/2013	Encampment (active)	3	Occupied: 20' North	
363	Encampment	32.76211	-117.20071	3	4/7/2013	Encampment (active)	6	Two encampments: 1 occupied, 1 abandoned	
376	Encampment	32.76168	-117.20154	3	4/7/2013	Encampment (active)	5	Occupied: Under trees, next to river	
368	Encampment	32.76177	-117.20064	3	4/7/2013	Encampment (inactive)	9	Encampment: 100ft radius with chair	
393	Encampment	32.76251	-117.19973	3	4/7/2013	Encampment (inactive)	1	Unoccupied: Toilet area	
358	Litter	32.76222	-117.19943	3	4/7/2013	Litter	2	Scattered litter under brush	
359	Litter	32.76222	-117.19962	3	4/7/2013	Litter	2	Scattered litter under brush	
362	Litter	32.76221	-117.20049	3	4/7/2013	Litter	1	Scattered litter: 50 ft around area	
365	Litter	32.76198	-117.20098	3	4/7/2013	Litter	2	Scattered litter, including golf club	
366	Litter	32.76178	-117.20085	3	4/7/2013	Litter	2	Pile of trash	
372	Litter	32.76185	-117.20033	3	4/7/2013	Litter	1	Box under bushes	
379	Litter	32.76182	-117.20196	3	4/7/2013	Litter	2	area	
389	Litter	32.76153	-117.20303	3	4/7/2013	Litter	2	Scattered debris, 50ft radius	
390	Litter	32.7617	-117.20258	3	4/7/2013	Litter	1	Litter under brush	
391	Litter	32.7622	-117.2024	3	4/7/2013	Litter	3	Bike, shopping cart, debris	
364	Litter	32.76207	-117.20076	3	4/7/2013	Litter	3	Litter: 50 ft around area	
54	Trash 20 yds from campsite	32.76083	-117.19917	4	4/7/2013	Dumping	10	Dumping 20 yds south of campsite	127
57	Dumping	32.76091	-117.20033	4	4/7/2013	Encampment (active)	5	Dumping	
31	Encampment	32.76085	-117.20176	4	4/7/2013	Encampment (active)	25	Occupied: Large, under brush	
34	Encampment	32.76112	-117.20156	4	4/7/2013	Encampment (active)	10	Possibly Occupied: Under trolley bridge, scattered debris	
39	Encampment	32.76118	-117.20085	4	4/7/2013	Encampment (active)	20	Occupied: 10 yds south, under palms	99
42	Encampment	32.76125	-117.19972	4	4/7/2013	Encampment (active)	15	Occupied: Next to King Palm, trash	100
46	Encampment	32.76156	-117.19862	4	4/7/2013	Encampment (active)	20	Large encampment	
47	Encampment	32.76167	-117.19842	4	4/7/2013	Encampment (active)	6	Occupied	113
52	Encampment	32.7609	-117.19845	4	4/7/2013	Encampment (active)	10	Occupied: Under brush	124
58	Encampment	32.76077	-117.20031	4	4/7/2013	Encampment (active)	15	Trash, encampment, scattered litter	
36	Camp	32.76134	-117.20142	4	4/7/2013	Encampment (inactive)	5	Scattered debris, close to under pass, abandoned campsite	93
32	Litter	32.76057	-117.20158	4	4/7/2013	Litter	4	Under trolley bridge, scattered debris	
37	Litter	32.76148	-117.20124	4	4/7/2013	Litter	3	Scattered along riverbank	
38	Litter	32.76133	-117.20097	4	4/7/2013	Litter	2	Next to King Palm, scattered trash	
43	Litter	32.76125	-117.19935	4	4/7/2013	Litter	2	Litter	106

River Blitz Survey Data--Trash
April 2013

45	Litter	32.76154	-117.19899	4	4/7/2013	Litter	8	Litter	
50	Under overpass: litter	32.76118	-117.19817	4	4/7/2013	Litter	3	Scattered litter under overpass	118
51	Litter/Shopping cart	32.76123	-117.19836	4	4/7/2013	Litter	4	Shopping cart under overpass, litter	122
61	Litter Along Path	32.76083	-117.20118	4	4/7/2013	Litter	3	Trash on side of pathway	
64	Litter	32.76059	-117.20116	4	4/7/2013	Litter	10	Trash littered under palms	
63	Trash Near Trail	32.76068	-117.20126	4	4/7/2013	Litter	8	Trash in bags	
6	Dumping	32.76334	-117.19525	6	4/10/2013	Dumping	1	Under trolley tracks	
7	Encampment	32.76332	-117.19535	6	4/10/2013	Encampment (active)	2	Occupied: West of trolley tracks	
9	Encampment	32.76291	-117.19631	6	4/10/2013	Encampment (active)	2	Occupied: Very large, black tent, 1 bag of trash by road	
10	Encampment	32.76264	-117.19644	6	4/10/2013	Encampment (active)	1	Blue tent, encampment	
20	Encampment	32.762	-117.19753	6	4/10/2013	Encampment (active)	2	Tents, north of Tamarisk- occupied	
24	Encampment	32.76211	-117.19686	6	4/10/2013	Encampment (active)	1	Occupied: 100ft in from river	945
26	Encampment	32.76241	-117.19625	6	4/10/2013	Encampment (active)	1	Occupied	950
12	Litter	32.7627	-117.19729	6	4/10/2013	Litter	1	Litter across from parking lot	
14	Litter	32.76251	-117.19772	6	4/10/2013	Litter	1		
17	Litter	32.762	-117.19772	6	4/10/2013	Litter	1		
18	Litter	32.76199	-117.19761	6	4/10/2013	Litter	1	Pillow	
21	Litter	32.76202	-117.19724	6	4/10/2013	Litter	1	Litter along river	
23	Litter	32.76212	-117.19696	6	4/10/2013	Litter	1	Litter along river	941
27	Litter	32.7624	-117.19624	6	4/10/2013	Litter	1	Litter	980
30	Litter	32.76231	-117.19583	6	4/10/2013	Litter	1	Black blanket	983
970	Dumping	32.76126	-117.19634	5	4/7/2013	Dumping	5	dumpster	1009
972	Dumping	32.76199	-117.19584	5	4/7/2013	Dumping	1	Large plastic bin	
993	Dumping	32.76138	-117.1971	5	4/7/2013	Dumping	2	Scattered litter and shopping cart	
975	Encampment	32.76194	-117.19554	5	4/7/2013	Encampment (active)	5	Occupied: Scattered trash	
986	Litter	32.76159	-117.19776	5	4/7/2013	Litter	2	Scattered litter under bridge	
988	Litter	32.76113	-117.19784	5	4/7/2013	Litter	2	Scattered litter under bridge	
991	Litter	32.76112	-117.19728	5	4/7/2013	Litter	2	Scattered litter	

River Blitz Data--Invasive Plants
April 2013

Waypoint	Lat	Lon	Survey Date	Segment ID	Invasive Type ID#	Invasive Type	Canopy Cover (Sq)	Comments	Photos
6	32.76334	-117.19525	4/10/2013	6	9	Pampas Grass	200		1
8	32.76312	-117.19598	4/10/2013	6	8	Castor Bean	50		3
9	32.76291	-117.19631	4/10/2013	6	8	Castor Bean	50		5
10	32.76264	-117.19644	4/10/2013	6	7	Mixed	600	Resprout, Canary Island Date Palm, Brazilian Pepper Tree, Arundo, Castor Bean	6, 7, 8
11	32.76257	-117.19709	4/10/2013	6	7	Mixed	1000	Castor Bean Eucalyptus and Arundo	9
13	32.76251	-117.19758	4/10/2013	6	4	Eucalyptus	400	Five Plants together	11
16	32.76207	-117.19781	4/10/2013	6	7	Mixed	500	Brazilian Pepper Tree and Eucalyptus	16, 17
17	32.762	-117.19772	4/10/2013	6	7	Mixed	100	Arundo and Brazilian Pepper Tree	18, 19, 20
19	32.762	-117.19761	4/10/2013	6	3	Canary Island Date Palm	100		22
20	32.762	-117.19753	4/10/2013	6	7	Mixed	1000	Tamarisk and Brazilian Pepper Tree	23
22	32.76203	-117.19721	4/10/2013	6	7	Mixed	500	Canary Island Date Palm and Arundo	24
23	32.76212	-117.19696	4/10/2013	6	2	Brazilian Pepper Tree	50		26, 27
24	32.76211	-117.19686	4/10/2013	6	6	Tamarisk	500		28
25	32.7623	-117.19661	4/10/2013	6	6	Tamarisk	400		30, 31
28	32.76239	-117.19616	4/10/2013	6	1	Arundo	100		32
30	32.76231	-117.19583	4/10/2013	6	2	Brazilian Pepper Tree	100		34
31	32.76232	-117.19583	4/10/2013	6	7	Mixed	10	Tamarisk and Brazilian Pepper Tree	37
32	32.76242	-117.19461	4/10/2013	6	6	Tamarisk	20		38
33	32.7624	-117.19401	4/10/2013	6	7	Mixed	30	Arundo Canary Island Date Palm and Large Stand	42, 43
352	32.76198	-117.19855	4/10/2013	3	1	Arundo	900		
356	32.76222	-117.19962	4/10/2013	3	1	Arundo	400	Mixed with wild radish	
357	32.76225	-117.19999	4/10/2013	3	5	Mexican Fan Palm	400	100 feet east of waypoint 3 big trees	
360	32.76211	-117.20071	4/10/2013	3	3	Canary Island Date Palm	100	2 trees	
361	32.76207	-117.20076	4/10/2013	3	7	Mixed	400	wild radish	
367	32.76174	-117.20075	4/10/2013	3	7	Mixed	200	wild radish	
370	32.76231	-117.20045	4/10/2013	3	9	Pampas Grass	100	grouping	
371	32.76236	-117.20073	4/10/2013	3	7	Mixed	200	Canary Island Date Palm	
373	32.76168	-117.20154	4/10/2013	3	3	Canary Island Date Palm	200	smaller tree	
374	32.7617	-117.20161	4/10/2013	3	4	Eucalyptus	225		
377	32.7619	-117.20201	4/10/2013	3	8	Castor Bean	25	Castor Bean	
378	32.7619	-117.20220	4/10/2013	3	3	Canary Island Date Palm	100		
379	32.76165	-117.20243	4/10/2013	3	3	Canary Island Date Palm	25		
380	32.76158	-117.20264	4/10/2013	3	3	Canary Island Date Palm	150		
382	32.76152	-117.20293	4/10/2013	3	7	Mixed	300	Pampas Grass Castor Bean and Canary Island Date Palm (dead)	
383	32.76153	-117.20310	4/10/2013	3	7	Mixed	200	Arundo and Castor Bean	
384	32.76151	-117.20331	4/10/2013	3	8	Castor Bean	50		
385	32.76172	-117.20306	4/10/2013	3	7	Mixed	100	Castor Bean	
387	32.7617	-117.20258	4/10/2013	3	3	Canary Island Date Palm	400	3 trunks	
388	32.7622	-117.20240	4/10/2013	3	1	Arundo	1500	in a swamp like area	
392	32.76246	-117.20017	4/10/2013	3	4	Eucalyptus	500		

River Blitz Data--Invasive Plants
April 2013

42	32.76125	-117.19972	4/10/2013	4	7	Mixed	1000	Canary Island Date Palm, Tamarisk
43	32.76125	-117.19935	4/10/2013	4	7	Mixed	500	Date Palm and Pampas Grass
44	32.76129	-117.19903	4/10/2013	4	7	Mixed	750	Eucalyptus and Arundo and Castor bean
46	32.76156	-117.19862	4/10/2013	4	7	Mixed	175	Pampas Grass date palm and pepper tree
47	32.76167	-117.19842	4/10/2013	4	3	Canary Island Date Palm	1000	3 trees
48	32.76159	-117.19819	4/10/2013	4	7	Mixed	1000	canary island date palm and pepper tree
49	32.76158	-117.19796	4/10/2013	4	7	Mixed	400	canary island date palm, castor bean
51	32.76123	-117.19836	4/10/2013	4	4	Eucalyptus	500	Large Stand
52	32.7609	-117.19845	4/10/2013	4	3	Canary Island Date Palm	10	
53	32.76089	-117.19892	4/10/2013	4	3	Canary Island Date Palm	300	dead tree
54	32.76083	-117.19917	4/10/2013	4	7	Mixed	200	eucalyptus and canary island date palm
55	32.76096	-117.19995	4/10/2013	4	4	Eucalyptus	150	
57	32.76091	-117.20033	4/10/2013	4	7	Mixed	102	Canary island date palm and pampas grass
60	32.76072	-117.20091	4/10/2013	4	3	Canary Island Date Palm	50	
62	32.76081	-117.20141	4/10/2013	4	2	Brazilian Pepper Tree	50	
63	32.76068	-117.20126	4/10/2013	4	7	Mixed	1300	3 canary island date palms and 5 Brazilian pepper trees
65	32.76049	-117.20198	4/10/2013	4	7	Mixed	300	Brazilian Pepper Tree and baby Mexican
66	32.76041	-117.20245	4/10/2013	4	2	Brazilian Pepper Tree	30	
68	32.7606	-117.20264	4/10/2013	4	7	Mixed	500	Pepper tree arundo and fan palms
69	32.76051	-117.2024	4/10/2013	4	7	Mixed	150	fan palms
961	32.76219	-117.19405	4/10/2013	5	7	Mixed	1000	Canary Island Date Palm Castor Bean and Brazilian Pepper Tree
962	32.7622	-117.19438	4/10/2013	5	7	Mixed	50	Canary Island Date Palm and Pampas
966	32.76119	-117.19523	4/10/2013	5	7	Mixed	250	Canary Island Date Palm 2, and Pampas
967	32.76142	-117.19557	4/10/2013	5	7	Mixed	400	Castor Bean and Canary Island Date Palm
969	32.76136	-117.19594	4/10/2013	5	9	Pampas Grass	100	
970	32.76126	-117.19634	4/10/2013	5	7	Mixed	500	Canary Island Date Palm and Brazilian
971	32.76171	-117.19586	4/10/2013	5	4	Eucalyptus	200	
973	32.76211	-117.19568	4/10/2013	5	6	Tamarisk	100	Arundo and castor bean
974	32.76194	-117.19554	4/10/2013	5	7	Mixed	230	arundo and canary island date palm
976	32.76168	-117.19531	4/10/2013	5	7	Mixed	65	
977	32.76205	-117.19588	4/10/2013	5	4	Eucalyptus	50	Brazilian pepper tree pampas grass and
978	32.76203	-117.19606	4/10/2013	5	7	Mixed	115	canary island date palm and dead Mexican
979	32.76195	-117.19623	4/10/2013	5	7	Mixed	400	canary island date palm and Brazilian
980	32.76177	-117.19645	4/10/2013	5	7	Mixed	800	canary island date palm and arundo
981	32.76185	-117.19668	4/10/2013	5	7	Mixed	500	young Mexican fan palm and arundo and Brazilian pepper tree
982	32.76196	-117.19679	4/10/2013	5	7	Mixed	100	Brazilian pepper tree, arundo and canary island date palm
983	32.76161	-117.19738	4/10/2013	5	7	Mixed	1500	canary island date palm tamarisk and Brazilian pepper tree and eucalyptus
984	32.76144	-117.1975	4/10/2013	5	7	Mixed	2000	continues canary island date palm grove, Brazilian pepper tree and arundo

San Diego River Park Foundation Park Watch Log Form

Name BEN SHANNON Date 8/10
 Area YMCA GARDEN Begin/End Time 12-1pm Total Time 1hr

Put an X in the boxes for things you witnessed while on patrol

	Cottonwood Grove	YMCA Garden	Pacific Hwy Mural	Friars Rd Railroad Bridge	Other
Adults		X			
Teenagers					
Children					
People fishing	? — See incidents				
People bike riding					
People sleeping					
Dogs off leash					
Parking area use					
Graffiti					
Other		X			

Record the following additional information:

General Information - Briefly describe your activities today. (If you drove, biked or walked and the areas you monitor etc)

Walked Garden and existing FOMVP trails loop trail

Incidents - List any incidents that happened (i.e. new graffiti, vandalism, complaints, trash, evidence of people living out there, etc. **Mark on the map to pinpoint the area for us.*)

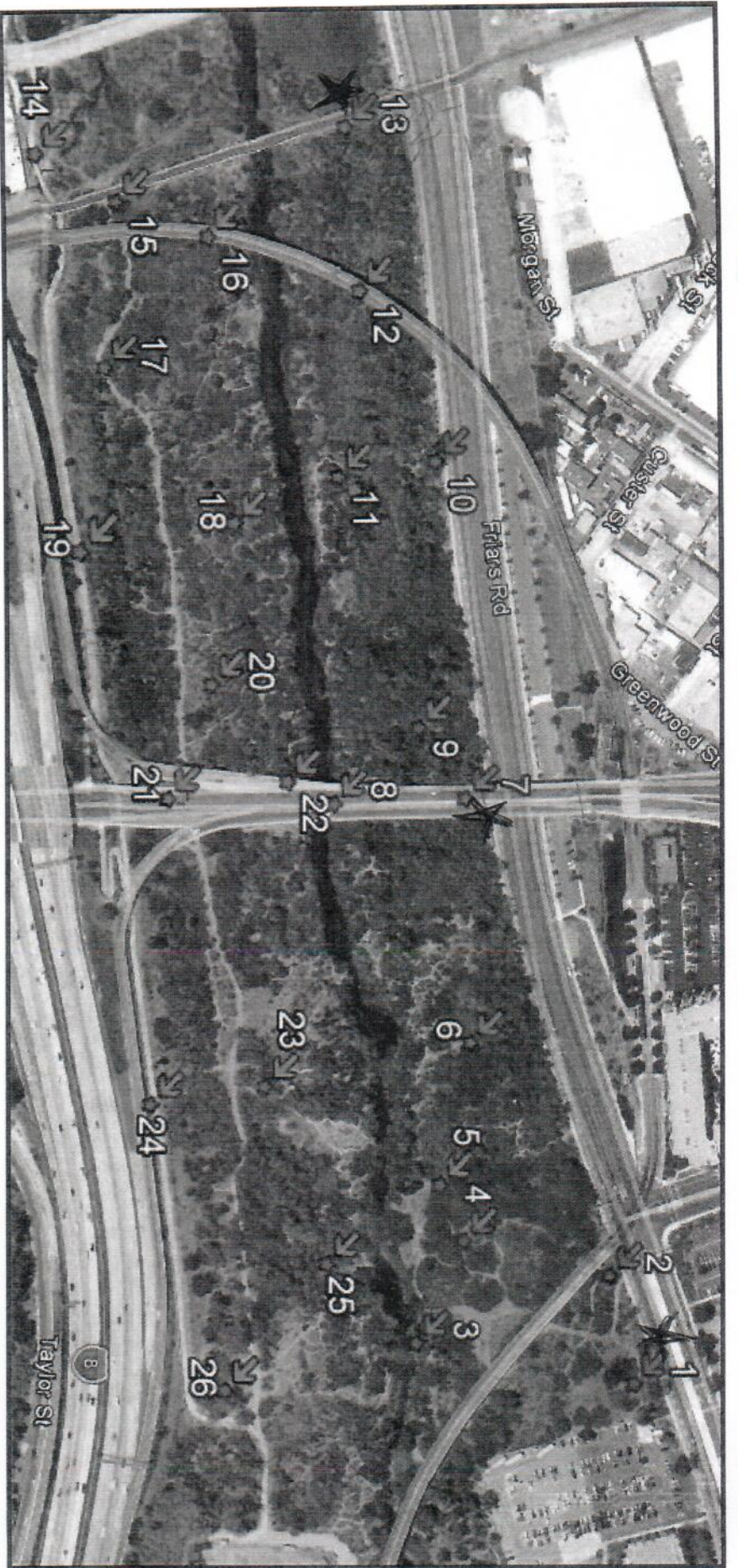
Guy w/ Gold Dredger in the middle of the river east of riffle

User Conflict - Describe conflicts that you saw or became aware of today.

/

Comments - Any additional information that we need to know.

/



- | | | |
|----------------------------------|------------------------------|----------------------------------|
| 1. Shade Structure | 11. Drilled Canary Grove | 21. Morena South Bank Near Trail |
| 2. NPS Panel | 12. Trolley Line North Bank | 22. Morena South Bank Near River |
| 3. North Bank Riffle | 13. Railroad North Bank | 23. Burnt Ash |
| 4. Willow Grove - <i>gone</i> | 14. Mural | 24. Flood Panel |
| 5. Utility Pole to No Man's Land | 15. Railroad South Bank | 25. Eucalyptus 2 |
| 6. Canary Island Date Palm | 16. Trolley South Bank | 26. Cottonwood Grove |
| 7. Morena North Bank Near Friars | 17. The Trail Bend | |
| 8. Morena North Bank Near River | 18. Sago Palm | |
| 9. Under Power Lines | 19. Bird Panel | |
| 10. Big Eucalyptus 1 | 20. Utility Lines South Bank | |

San Diego River Park Foundation Park Watch Log Form

Name Lindsey & Nick Date 8/28/12
 Area Mission Valley PRESERVE Begin/End Time 9:30 - Total Time 10:30

Put an X in the boxes for things you witnessed while on patrol

	Cottonwood Grove	YMCA Garden	Pacific Hwy Mural	Friars Rd Railroad Bridge	Other
Adults					
Teenagers					
Children					
People fishing					
People bike riding					
People sleeping					
Dogs off leash					
Parking area use					
Graffiti					
Other					

Record the following additional information:

General Information - Briefly describe your activities today. (If you drove, biked or walked and the areas you monitor etc)

under 13, no trespassing sign fallen, graffiti on bridge
large hornets nest under picnic bench in garden walked area

Incidents - List any incidents that happened (i.e. new graffiti, vandalism, complaints, trash, evidence of people living out there, etc. **Mark on the map to pinpoint the area for us.*)

TRASH UNDER BRIDGE @ MURAL 2 BASS # 7
#13 BROKEN NO TRESPASSING SIGN
HORNETS NEST AT #1 ON SHADE STRUCTURE

User Conflict - Describe conflicts that you saw or became aware of today.

NA -

Comments - Any additional information that we need to know.

Sign area top kiosk 8 1/2 x 11 sign in garden 3' x 2'4"
monitored 13-3

San Diego River Park Foundation Park Watch Log Form

Name Mike & Shannon Date 9/4/2012
 Area MVP South Begin/End Time 2:45 pm - 4:05 Total Time 1:20

Put an X in the boxes for things you witnessed while on patrol

	Cottonwood Grove	YMCA Garden	Pacific Hwy Mural	Friars Rd Railroad Bridge	Other
Adults					X
Teenagers					
Children					
People fishing					
People bike riding					
People sleeping					
Dogs off leash					
Parking area use					
Graffiti	X	X	X	X	X
Other					

* 22/21

Record the following additional information:

General Information - Briefly describe your activities today. (If you drove, biked or walked and the areas you monitor etc)

Incidents - List any incidents that happened (i.e. new graffiti, vandalism, complaints, trash, evidence of people living out there, etc. ***Mark on the map to pinpoint the area for us.**)

- fallen 6-pack : needs replacement near # 14 : east #11, west # 21 : graffiti on pole
 graffiti on railroad bridge, mild litter on trail / iceplant overtaking trail west # 2.
 # 19 : graffiti on sign ; east of 19 graffiti on trail ;

User Conflict - Describe conflicts that you saw or became aware of today.

Comments - Any additional information that we need to know.

San Diego River Park Foundation Park Watch Log Form

Telephone Contact Numbers:

- Emergency 911
- San Diego Police Non-emergency (619) 531-2000
- San Diego River Park Foundation (619) 297-7380
- Tri-Canyon Rangers (858) 581-9961 ext. 222
- City of San Diego Stormwater Hotline (619) 235-1000
- Animal Control (619) 236-4250

Some Safety Precautions:

1. Wear your identifying Park Patrol volunteer item (hat, shirt or volunteer ID lanyard).
2. Keep valuables out of site
3. Keep car/cart keys safe
4. Wear appropriate shoes, hats etc...
5. Carry cell phone
6. Watch for dogs, snakes, insects, bees, hornets, and other dangers
7. Carry bottled water, never drink the river water
8. Never patrol on your own
9. Wear sunscreen
10. Practice non-confrontational approach to educate visitors

22 graffiti (a lot) + trash/cut
minor trash along #23
graffiti on bikeway sign near #24

west #21 : graffiti on Morena Blvd sign and mid trail

west #21 : missing 6 pack

21 : graffiti

graffiti continued along bridges at # 21

graffiti & knocked down sign east of # 21

graffiti & trash near # 24

graffiti near # 26 @ mural trail

minor trash along # 26 trail

graffiti on ground past # 26

west of # 17 = burnt plastic tubing + metal object

on dirt path near # 15 :
glass shards

San Diego River Park Foundation Park Watch Log Form

Name Rich & Shannon Date 9/5/2012
 Area Mission Valley Preserve Begin/End Time 5:40-6:20 Total Time ~~5:40~~ 40 min

Put an X in the boxes for things you witnessed while on patrol

	Cottonwood Grove	YMCA Garden	Pacific Hwy Mural	Friars Rd Railroad Bridge	Other
Adults					
Teenagers					
Children					
People fishing					
People bike riding			X		
People sleeping					
Dogs off leash					
Parking area use					
Graffiti					
Other					

Record the following additional information:

General Information - Briefly describe your activities today. (If you drove, biked or walked and the areas you monitor etc)

ry

Incidents - List any incidents that happened (i.e. new graffiti, vandalism, complaints, trash, evidence of people living out there, etc. **Mark on the map to pinpoint the area for us.*)

near 14 small trash, graffiti, + 1 trash bag - #19 graffiti on sign, trash -
smells bad under McHenry (fecal), trash near 26 - cutback
willow on trail (20)

User Conflict - Describe conflicts that you saw or became aware of today.

/

Comments - Any additional information that we need to know.

San Diego River Park Foundation Park Watch Log Form

Name Katy & Shannon Date 9/6/2012
 Area MVP South Begin/End Time 2:00-3:15 Total Time 1hr 15min
 1:45 30

Put an X in the boxes for things you witnessed while on patrol

	Cottonwood Grove	YMCA Garden	Pacific Hwy Mural	Friars Rd Railroad Bridge	Other
Adults					
Teenagers					
Children					
People fishing					
People bike riding					
People sleeping					
Dogs off leash					
Parking area use					
Graffiti					
Other					

Record the following additional information:

General Information - Briefly describe your activities today. (If you drove, biked or walked and the areas you monitor etc)

Incidents - List any incidents that happened (i.e. new graffiti, vandalism, complaints, trash, evidence of people living out there, etc. **Mark on the map to pinpoint the area for us.*)

User Conflict - Describe conflicts that you saw or became aware of today.

Comments - Any additional information that we need to know.

3 cyclists on access road on trail
 Graffiti removed from Ford panel
 Guy w/dog on leash on bike →

San Diego River Park Foundation Park Watch Log Form

Name Mike & Woody Date 9/18/12
 Area MVP South Begin/End Time 10:50 → 11:40 Total Time 50 min

Put an X in the boxes for things you witnessed while on patrol

	Cottonwood Grove	YMCA Garden	Pacific Hwy Mural	Friars Rd Railroad Bridge	Other
Adults				X: 2	
Teenagers					
Children					
People fishing					
People bike riding				X: 2	
People sleeping					
Dogs off leash					
Parking area use					
Graffiti					
Other					

Record the following additional information:

General Information - Briefly describe your activities today. (If you drove, biked or walked and the areas you monitor etc)

Walked along the path

Incidents - List any incidents that happened (i.e. new graffiti, vandalism, complaints, trash, evidence of people living out there, etc. **Mark on the map to pinpoint the area for us.*)

19: fire in tree

User Conflict - Describe conflicts that you saw or became aware of today.

Comments - Any additional information that we need to know.

2 cyclists 1 near Railroad Bridge, 1 near Cottonwood Grove
2 Adults near Railroadbridge path to the west

San Diego River Park Foundation Park Watch Log Form

Name Rich Lo Date 9/14/2022
 Area SD River Begin/End Time 5:38 pm / 6:02 pm Total Time 22 min

Put an X in the boxes for things you witnessed while on patrol

	Cottonwood Grove	YMCA Garden	Pacific Hwy Mural	Friars Rd Railroad Bridge	Other
Adults	1			1	
Teenagers					
Children					
People fishing					
People bike riding					
People sleeping					
Dogs off leash					
Parking area use					
Graffiti					
Other					

Record the following additional information:

General Information - Briefly describe your activities today. (If you drove, biked or walked and the areas you monitor etc)

Walked along San Diego River. 8 bicyclist

Incidents - List any incidents that happened (i.e. new graffiti, vandalism, complaints, trash, evidence of people living out there, etc. **Mark on the map to pinpoint the area for us.*)

Graffiti on Mission Valley Preserve Sign near Mural
Trash under railroad (15)

User Conflict - Describe conflicts that you saw or became aware of today.

Comments - Any additional information that we need to know.

San Diego River Park Foundation Park Watch Log Form

Name Rich Co Date 9/20/2012
 Area San Diego River bike path Begin/End Time 5:30-5:50 Total Time 20 min

Put an X in the boxes for things you witnessed while on patrol

	Cottonwood Grove	YMCA Garden	Pacific Hwy Mural	Friars Rd Railroad Bridge	Other
Adults					
Teenagers					
Children					
People fishing					
People bike riding					
People sleeping					
Dogs off leash					
Parking area use					
Graffiti					
Other					

Record the following additional information:

General Information - Briefly describe your activities today. (If you drove, biked or walked and the areas you monitor etc)

Walked area, 11 bicyclists

Incidents - List any incidents that happened (i.e. new graffiti, vandalism, complaints, trash, evidence of people living out there, etc. **Mark on the map to pinpoint the area for us.*)

Two shopping carts Rail Road South Bank (15)

User Conflict - Describe conflicts that you saw or became aware of today.

Comments - Any additional information that we need to know.

San Diego River Park Foundation Park Watch Log Form

Name Rich Lo Date 9/25/2012
 Area San Diego River Bike Path Begin/End Time 5:20 pm - 5:45 Total Time 5:28 - 25 min

Put an X in the boxes for things you witnessed while on patrol

	Cottonwood Grove	YMCA Garden	Pacific Hwy Mural	Friars Rd Railroad Bridge	Other
Adults			1		
Teenagers					
Children					
People fishing					
People bike riding					
People sleeping					
Dogs off leash					
Parking area use					
Graffiti					
Other					

Record the following additional information:

General Information - Briefly describe your activities today. (If you drove, biked or walked and the areas you monitor, etc)

Walked along river mural area. No Bikers

Incidents - List any incidents that happened (i.e. new graffiti, vandalism, complaints, trash, evidence of people living out there, etc. ***Mark on the map to pinpoint the area for us.**)

Trash bag and shopping cart on Flood Panel (24)

User Conflict - Describe conflicts that you saw or became aware of today.

Comments - Any additional information that we need to know.

San Diego River Park Foundation Park Watch Log Form

Name Rich G Date 9/29/2012
 Area San Diego River Bike Path Begin/End Time 10:25 - 10:37 Total Time 12 min

Put an X in the boxes for things you witnessed while on patrol

	Cottonwood Grove	YMCA Garden	Pacific Hwy Mural	Friars Rd Railroad Bridge	Other
Adults					
Teenagers					
Children					
People fishing					
People bike riding			111		
People sleeping					
Dogs off leash					
Parking area use					
Graffiti					
Other					

Record the following additional information:

General Information - Briefly describe your activities today. (If you drove, biked or walked and the areas you monitor etc)

Biked

Incidents - List any incidents that happened (i.e. new graffiti, vandalism, complaints, trash, evidence of people living out there, etc. *Mark on the map to pinpoint the area for us.)

Volunteer group cleaning Cottonwood Area. Shopping carts located (15) and (24) trash bag near (24)

User Conflict - Describe conflicts that you saw or became aware of today.

Comments - Any additional information that we need to know.

San Diego River Park Foundation Park Watch Log Form

Name Rich Lo Date 10/2/2012
 Area San Diego River bike trail Begin/End Time 5:30 pm - 5:54 pm Total Time 24 min

Put an X in the boxes for things you witnessed while on patrol

	Cottonwood Grove	YMCA Garden	Pacific Hwy Mural	Friars Rd Railroad Bridge	Other
Adults	2				
Teenagers					
Children					
People fishing					
People bike riding					
People sleeping					
Dogs off leash					
Parking area use					
Graffiti					
Other					

Record the following additional information:

General Information - Briefly describe your activities today. (If you drove, biked or walked and the areas you monitor etc)

Incidents - List any incidents that happened (i.e. new graffiti, vandalism, complaints, trash, evidence of people living out there, etc. **Mark on the map to pinpoint the area for us.*)

Scatter trash along Morena Blvd Signs (21)

User Conflict - Describe conflicts that you saw or became aware of today.

Comments - Any additional information that we need to know.

San Diego River Park Foundation Park Watch Log Form

Name Rich Lo Date 10/9/2012
 Area San Diego River Bike Path Begin/End Time 5:06pm-5:30 Total Time 24min

Put an X in the boxes for things you witnessed while on patrol

	Cottonwood Grove	YMCA Garden	Pacific Hwy Mural	Friars Rd Railroad Bridge	Other
Adults			111		
Teenagers					
Children					
People fishing					
People bike riding			1111		
People sleeping					
Dogs off leash					
Parking area use					
Graffiti					
Other					

Record the following additional information:

General Information - Briefly describe your activities today. (If you drove, biked or walked and the areas you monitor etc)

Walked path

Incidents - List any incidents that happened (i.e. new graffiti, vandalism, complaints, trash, evidence of people living out there, etc. ***Mark on the map to pinpoint the area for us.**)

Trash under (15)(21)

User Conflict - Describe conflicts that you saw or became aware of today.

Comments - Any additional information that we need to know.

San Diego River Park Foundation Park Watch Log Form

Name Rich Lo Date 10/16/2012
 Area San Diego River Bike Trail Begin/End Time 5:26pm-5:52 Total Time 26 min

Put an X in the boxes for things you witnessed while on patrol

	Cottonwood Grove	YMCA Garden	Pacific Hwy Mural	Friars Rd Railroad Bridge	Other
Adults					
Teenagers					
Children					
People fishing					
People bike riding					
People sleeping					
Dogs off leash					
Parking area use					
Graffiti					
Other					

17

Record the following additional information:

General Information - Briefly describe your activities today. (If you drove, biked or walked and the areas you monitor etc)

Walked

Incidents - List any incidents that happened (i.e. new graffiti, vandalism, complaints, trash, evidence of people living out there, etc. **Mark on the map to pinpoint the area for us.*)

Trash along (15) (21)

User Conflict - Describe conflicts that you saw or became aware of today.

Comments - Any additional information that we need to know.

San Diego River Park Foundation Park Watch Log Form

Name Rich La Date 10/12/2012
 Area San Diego River Bike trail Begin/End Time 5:15pm Total Time 5:45

Put an X in the boxes for things you witnessed while on patrol

	Cottonwood Grove	YMCA Garden	Pacific Hwy Mural	Friars Rd Railroad Bridge	Other
Adults					
Teenagers					
Children					
People fishing					
People bike riding					
People sleeping					
Dogs off leash					
Parking area use					
Graffiti					
Other					

Record the following additional information:

General Information - Briefly describe your activities today. (If you drove, biked or walked and the areas you monitor etc)

Walked and cleaned area 11 bags!

Incidents - List any incidents that happened (i.e. new graffiti, vandalism, complaints, trash, evidence of people living out there, etc. **Mark on the map to pinpoint the area for us.*)

User Conflict - Describe conflicts that you saw or became aware of today.

Comments - Any additional information that we need to know.

San Diego River Park Foundation Park Watch Log Form

Name Rich Lo Date 12/25/2012
 Area San Diego River bike trail Begin/End Time 5:20pm 5:50 Total Time 30 min

Put an X in the boxes for things you witnessed while on patrol

	Cottonwood Grove	YMCA Garden	Pacific Hwy Mural	Friars Rd Railroad Bridge	Other
Adults					
Teenagers					
Children					
People fishing					
People bike riding					
People sleeping					
Dogs off leash					
Parking area use					
Graffiti					
Other					

Record the following additional information:

General Information - Briefly describe your activities today. (If you drove, biked or walked and the areas you monitor etc)

walked 10 bikers

Incidents - List any incidents that happened (i.e. new graffiti, vandalism, complaints, trash, evidence of people living out there, etc. **Mark on the map to pinpoint the area for us.*)

User Conflict - Describe conflicts that you saw or became aware of today.

Comments - Any additional information that we need to know.

San Diego River Park Foundation Park Watch Log Form

Name Rich Lo Date 10/30/2012
 Area San Diego River Bike Trail Begin/End Time 5:45-6:05 Total Time 20 min

Put an X in the boxes for things you witnessed while on patrol

	Cottonwood Grove	YMCA Garden	Pacific Hwy Mural	Friars Rd Railroad Bridge	Other
Adults					
Teenagers					
Children					
People fishing					
People bike riding					
People sleeping					
Dogs off leash					
Parking area use					
Graffiti					
Other					

Record the following additional information:

General Information - Briefly describe your activities today. (If you drove, biked or walked and the areas you monitor etc)

Walked 10-bikes

Incidents - List any incidents that happened (i.e. new graffiti, vandalism, complaints, trash, evidence of people living out there, etc. **Mark on the map to pinpoint the area for us.*)

Trash at (14) ; Tents established in (24)

User Conflict - Describe conflicts that you saw or became aware of today.

Comments - Any additional information that we need to know.

San Diego River Park Foundation Park Watch Log Form

Name Ross / Tom Date 11/5/2012
 Area MISSION VALLEY PRESERVE Begin/End Time 1:00 pm Total Time 3:00 pm

2 hours

Put an X in the boxes for things you witnessed while on patrol

	Cottonwood Grove	YMCA Garden	Pacific Hwy Mural	Friars Rd Railroad Bridge	Other
Adults	1		2		
Teenagers					
Children					
People fishing					
People bike riding			3		
People sleeping					
Dogs off leash					
Parking area use					
Graffiti				✓	
Other	1 RUNNING			TRASH	

Record the following additional information:

L SCATTERED 10 BAGS

General Information - Briefly describe your activities today. (If you drove, biked or walked and the areas you monitor etc)

WALKED AREAS - SOUTH SIDE - CHECKED CAMERAS

Incidents - List any incidents that happened (i.e. new graffiti, vandalism, complaints, trash, evidence of people living out there, etc. **Mark on the map to pinpoint the area for us.*)

GRAFFITI ALL BRIDGES

User Conflict - Describe conflicts that you saw or became aware of today.

N/A

Comments - Any additional information that we need to know.

MORE ENCAMPMENTS

San Diego River Park Foundation Park Watch Log Form

Name ROSS J. TOM Date 10/13/2012
 Area MISSION VALLEY PRESERVE NORTH SIDE Begin/End Time 10:00 AM / 12:00 PM Total Time 2 HR

Put an X in the boxes for things you witnessed while on patrol

	Cottonwood Grove	YMCA Garden	Pacific Hwy Mural	Friars Rd Railroad Bridge	Other
Adults					(2) ENCAMPMENT EAST SIDE MORENA BRIDGE
Teenagers					
Children					
People fishing					(3) @ MORENA BRIDGE EAST SIDE
People bike riding					
People sleeping					
Dogs off leash					
Parking area use					
Graffiti					
Other					

Record the following additional information:

General Information - Briefly describe your activities today. (If you drove, biked or walked and the areas you monitor etc)

WALKED ON NORTH SIDE OF RIVER. SAW 3 TEENAGERS FISHING FROM MORENA BRIDGE. COVERED GRAFFITI ON #5.

Incidents - List any incidents that happened (i.e. new graffiti, vandalism, complaints, trash, evidence of people living out there, etc. *Mark on the map to pinpoint the area for us.)

ON EAST SIDE OF NORTH BANK (SD RIVER) 50 YARDS EAST OF MORENO BRIDGE, NEW ENCAMPMENT WITH TWO ADULTS

User Conflict - Describe conflicts that you saw or became aware of today.

N/A

Comments - Any additional information that we need to know.

MORE TRASH SITES FOUND. TWO PINKS (NEW) FOUND AT #6. - STILL ALOT OF GRAFFITI ON MORENO BRIDGE UNDER MORENA BRIDGE (NORTH BANK) WHERE GULLY IS, TRASH WAS PICKED UP FROM THE LAST TIME WE DID PATROL.

San Diego River Park Foundation Park Watch Log Form

Name Patrick Russ Tom Date 11/20/12
 Area Mission Valley preserve Begin/End Time 10:30 - ~~13:00~~ 12:30 Total Time ~~2:30~~ 2 hours

Put an X in the boxes for things you witnessed while on patrol

	Cottonwood Grove	YMCA Garden	Pacific Hwy Mural	Friars Rd Railroad Bridge	Other
Adults					
Teenagers					
Children					
People fishing					8
People bike riding	///		///		24, 21, 19, 14, 15, 13
People sleeping					21
Dogs off leash					26
Parking area use					
Graffiti	///				24, 21, 19, 8
Other					19, 14

2 here
stern water etc

Record the following additional information:

General Information - Briefly describe your activities today. (If you drove, biked or walked and the areas you monitor etc)

Incidents - List any incidents that happened (i.e. new graffiti, vandalism, complaints, trash, evidence of people living out there, etc. ***Mark on the map to pinpoint the area for us.**)

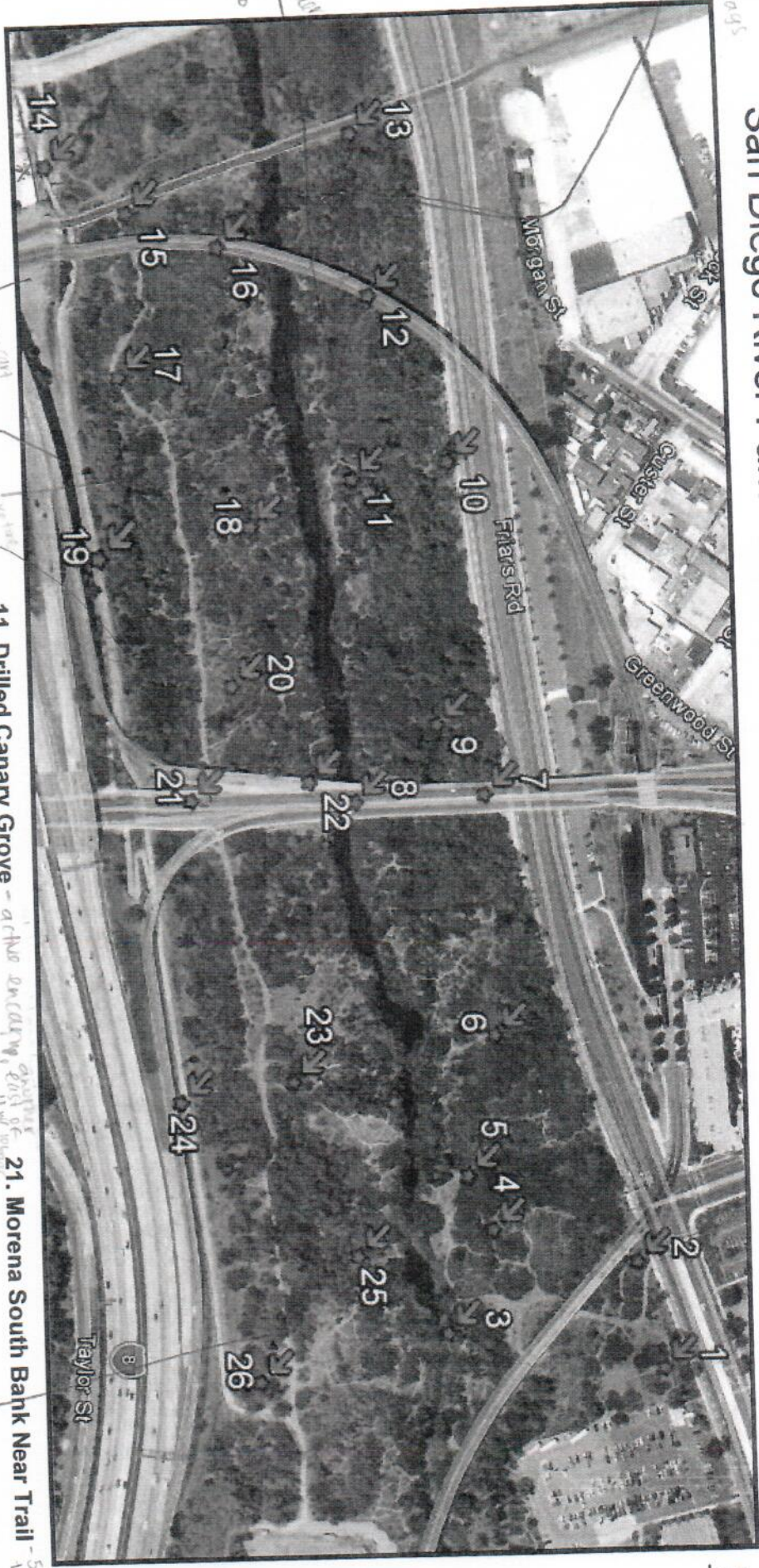
new graffiti new encampments (see map)

User Conflict - Describe conflicts that you saw or became aware of today.

Comments - Any additional information that we need to know.

last 15 bags
each as
one bag

active under
away under
12 ac up
16 ac 20
10 ac 20



1. Shade Structure
2. NPS Panel
3. North Bank Riffle
4. Willow Grove
5. Utility Pole to No Man's Land
6. Canary Island Date Palm
7. Morena North Bank Near Friars
8. Morena North Bank Near River
9. Under Power Lines
10. Big Eucalyptus 1
11. Drilled Canary Grove - active enclosure, end of bridge
12. Trolley Line North Bank - 25 bags under bridge
13. Railroad North Bank
14. Mural
15. Railroad South Bank - enclosure prevent at 15, debris in the water and stepping out
16. Trolley South Bank
17. The Trail Bend
18. Sago Palm
19. Bird Panel - scattered trash, graffiti like park
20. Utility Lines South Bank
21. Morena South Bank Near Trail - 5 bags
22. Morena South Bank Near River
23. Burnt Ash
24. Flood Panel - 15 bags
25. Eucalyptus 2
26. Cottonwood Grove - scattered trash

shoot point
large group
quartz
about 100
from hole

scattered trash, graffiti like park

Save away palms

0025
944
019

San Diego River Park Foundation Park Watch Log Form

Name Hiram Herrera/Thomas Youngshusband Date 12/3/12
 Area South side Mission Valley Begin/End Time 13:00 Total Time 19:30

Put an X in the boxes for things you witnessed while on patrol

	Cottonwood Grove	YMCA Garden	Pacific Hwy Mural	Friars Rd Railroad Bridge	Other
Adults					
Teenagers					
Children					
People fishing					
People bike riding	III		III		II
People sleeping					
Dogs off leash					
Parking area use					
Graffiti					
Other					

8

Record the following additional information:

General Information - Briefly describe your activities today. (If you drove, biked or walked and the areas you monitor etc)

WALKING

Incidents - List any incidents that happened (i.e. new graffiti, vandalism, complaints, trash, evidence of people living out there, etc. **Mark on the map to pinpoint the area for us.*)

26 - trash near trail, 26 - active encampment inactive, W of 23 scattered trash
Max pan cave scattered trash, 20 - scattered trash in different sites near site
18 - old camp fire, East of 17 about 15m scattered trash / more trash on trails westward

User Conflict - Describe conflicts that you saw or became aware of today.

Comments - Any additional information that we need to know.

ALOT MORE NEAR TRAILS THAN NORMAL

San Diego River Park Foundation Park Watch Log Form

Name THOM, Tom, ROSS Date 12/10/2012
 Area SOUTH SIDE MVP Begin/End Time 1:00 PM Total Time 2:30 P.M.
 1 Hr 30 MIN ~~1:30~~

Put an X in the boxes for things you witnessed while on patrol

	Cottonwood Grove	YMCA Garden	Pacific Hwy Mural	Friars Rd Railroad Bridge	Other
Adults					#24, #19
Teenagers					
Children					
People fishing					
People bike riding					#21
People sleeping					
Dogs off leash					
Parking area use					
Graffiti					
Other					

Record the following additional information:

1 SKATE

General Information - Briefly describe your activities today. (If you drove, biked or walked and the areas you monitor etc)

Incidents - List any incidents that happened (i.e. new graffiti, vandalism, complaints, trash, evidence of people living out there, etc. *Mark on the map to pinpoint the area for us.)

DIRT PATH } NORTH SIDE REEFEL -> SHOP CART IN WATER, #24 NORTH RIPPED SNOW FENCE -> TRASH IN PALMS NEARBY, #21 SCATTERED TRASH NEAR BRIDGE (E), #21 (N) ON BRIDGE BIKE MOGULS W/ DIRT PILES, #19 WEST ACTIVE CAMP IN TREES

User Conflict - Describe conflicts that you saw or became aware of today.

DRUG ACTIVITY #21, 3 MEN DUCKED INTO RUSHES THEN RETURNED TO TRAIL AFTER HIDING A BAG, THEY QUESTIONED WHO WE WERE THEN SAID "THEY ARE JUST VOLUNTEERS SO DON'T SHOOT THEM".

Comments - Any additional information that we need to know.

* MEXICAN FAN PALM - YELLOW ON TOP

San Diego River Park Foundation Park Watch Log Form

Name Rachel, Mike Date 1/31/13
 Area MVP Begin/End Time 12:45 - 1:45 Total Time 1 hr

Put an X in the boxes for things you witnessed while on patrol

	Cottonwood Grove	YMCA Garden	Pacific Hwy Mural	Friars Rd Railroad Bridge	Other
Adults				11	
Teenagers					
Children					
People fishing					
People bike riding	1		1	1	
People sleeping					
Dogs off leash					
Parking area use					
Graffiti			1	1	
Other	11			1	

Record the following additional information:

General Information - Briefly describe your activities today. (If you drove, biked or walked and the areas you monitor etc)

Walked from Pacific Hwy Mural to Cottonwood Grove

Incidents - List any incidents that happened (i.e. new graffiti, vandalism, complaints, trash, evidence of people living out there, etc. **Mark on the map to pinpoint the area for us.*)

Graffiti under bridge at Friars Rd - point 15

Scattered Trash at 19 east; some off the road in the trees

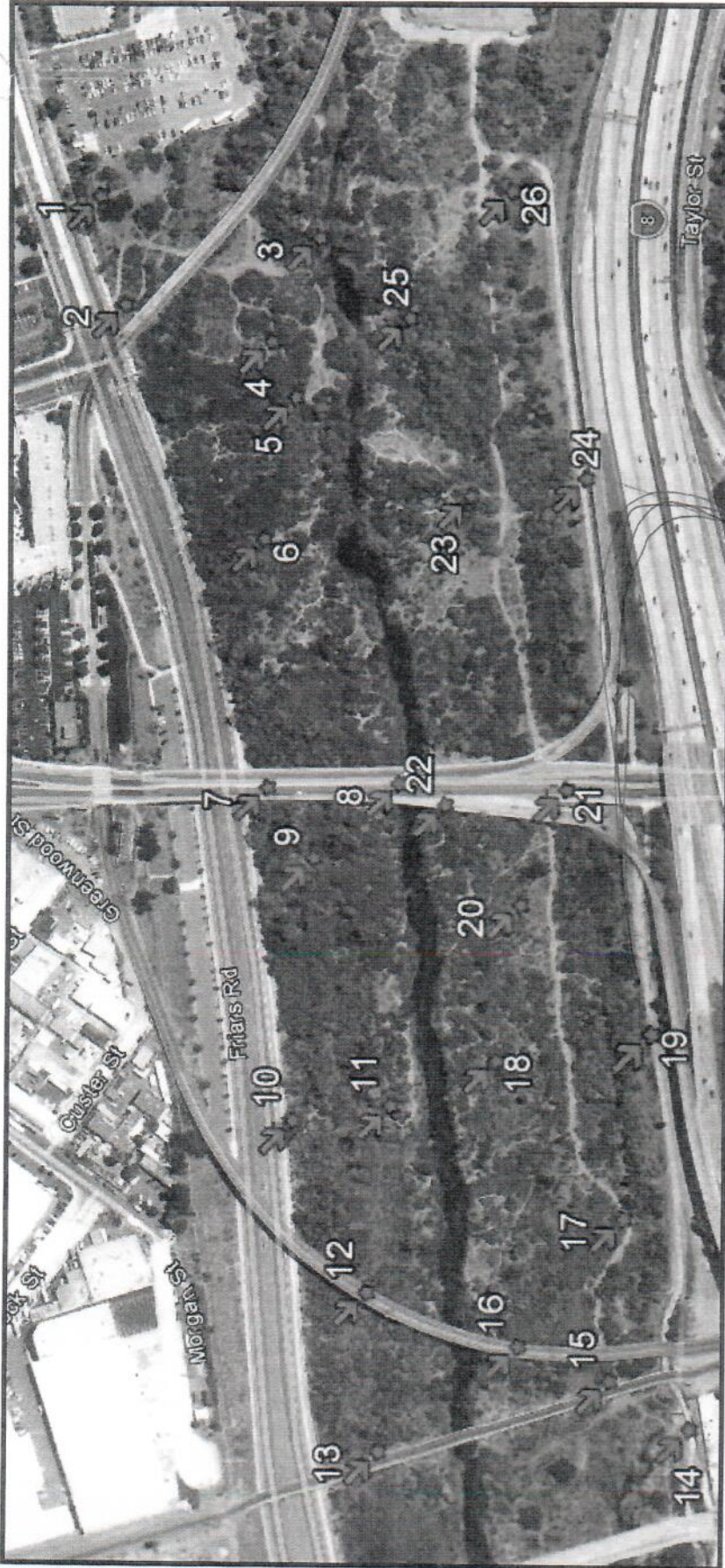
2: Scattered trash under bridge Scattered trash at CWG

User Conflict - Describe conflicts that you saw or became aware of today.

Comments - Any additional information that we need to know.

Ocean Beach / Hotel Circle Sign East of 19

Visor kept at San Diego - cutting peppertrees down



- | | | |
|----------------------------------|------------------------------|----------------------------------|
| 1. Shade Structure | 11. Drilled Canary Grove | 21. Morena South Bank Near Trail |
| 2. NPS Panel | 12. Trolley Line North Bank | 22. Morena South Bank Near River |
| 3. North Bank Riffle | 13. Railroad North Bank | 23. Burnt Ash |
| 4. Willow Grove | 14. Mural | 24. Flood Panel |
| 5. Utility Pole to No Man's Land | 15. Railroad South Bank | 25. Eucalyptus 2 |
| 6. Canary Island Date Palm | 16. Trolley South Bank | 26. Cottonwood Grove |
| 7. Morena North Bank Near Friars | 17. The Trail Bend | |
| 8. Morena North Bank Near River | 18. Sago Palm | |
| 9. Under Power Lines | 19. Bird Panel | |
| 10. Big Eucalyptus 1 | 20. Utility Lines South Bank | |

Grullon
Peter (3)

San Diego River Park Foundation Park Watch Log Form

Name ROSS + NIK + TOM Date 2/2/25
 Area MVP SOUTH Begin/End Time 1:00pm Total Time _____

Put an X in the boxes for things you witnessed while on patrol

	Cottonwood Grove	YMCA Garden	Pacific Hwy Mural	Friars Rd Railroad Bridge	Other
Adults					
Teenagers					
Children					
People fishing					
People bike riding					
People sleeping					
Dogs off leash					
Parking area use					
Graffiti					
Other					

Record the following additional information:

General Information - Briefly describe your activities today. (If you drove, biked or walked and the areas you monitor etc)

WALKED -> TRAINED NIK

Incidents - List any incidents that happened (i.e. new graffiti, vandalism, complaints, trash, evidence of people living out there, etc. *Mark on the map to pinpoint the area for us.)

NEW GRAFFITI: MORENO AVE BRIDGE

User Conflict - Describe conflicts that you saw or became aware of today.

(2) PEOPLE W/ BAG MARIJUANA

Comments - Any additional information that we need to know.

TRASH UNDER MORENO BRIDGE NEAR DUMPSTER (2) BAGS,
(2) PEOPLE MARIJUANA W MORENO BRIDGE, TRASH SITE W/ MORENO
NEAR PEPPER TREE, (2) PEOPLE UNDER TROLLEY BRIDGE, (1) SHOP CART
TRASH UNDER TROLLEY 4 BAGS, 19 BURN SITE SHOP CART 1 BAG
TRASH (W) FLOOD PLANEL UNDER BRIDGE, SHOP CART UNDER BRIDGE

□ # 14 NORTH STORM PIPE - STORM WATER
DEBRIS PIC # 154

□ PCH # 14 # 155-156 - SCATTERED TRASH
50 BAGS / 2 SHOPPING CARTS IN RIVER / TRASH
IN RIVER

15 SOUTH ACTIVE CAMP
PIC # 157

17 SOUTH SCATTERED TRASH PIC # 158
(TARZANA HALL TAKEN DOWN)

COTTON WOOD FENCE POST BROKEN OFF (2)
PIC # 159 - 160 - MADE CROSS

San Diego River Park Foundation Park Watch Log Form

Name Tom + Ross Date 2/5/2013
 Area NORTH / MVP Begin/End Time 9:00-10:30 Total Time 1:30
A.M. A.M. REG
 1.5 HRS

Put an X in the boxes for things you witnessed while on patrol

	Cottonwood Grove	YMCA Garden	Pacific Hwy Mural	Friars Rd Railroad Bridge	Other
Adults	8 MALES				7 7
Teenagers					
Children					
People fishing					
People bike riding					
People sleeping					
Dogs off leash					
Parking area use					
Graffiti					
Other					

Record the following additional information:

General Information - Briefly describe your activities today. (If you drove, biked or walked and the areas you monitor etc)

(2) HOMELESS CROSS RIFFLE, BETWEEN 5+6 FIRE PLACE, #6 NEAR PEPPER TREE
 CUT - TRASH IN PALMS, #6 TENT #138, #6 CAMP IN ARBUNDO #139

Incidents - List any incidents that happened (i.e. new graffiti, vandalism, complaints, trash, evidence of people living out there, etc. *Mark on the map to pinpoint the area for us.)

N/A

User Conflict - Describe conflicts that you saw or became aware of today.

N/A

Comments - Any additional information that we need to know.

TWO HOMELESS ADULTS CROSSING RIFFLE; 4 ADULTS AT ACTIVE CAMPS.

* SEE BACK SIDE

San Diego River Park Foundation Park Watch Log Form

Name ROSS, Tom Date 2/17/2013
 Area NORTH / SOUTH MVP Begin/End Time 10:00-12:00 Total Time 2 HRS

Put an X in the boxes for things you witnessed while on patrol

	Cottonwood Grove	YMCA Garden	Pacific Hwy Mural	Friars Rd Railroad Bridge	Other
Adults			1	1	X 2
Teenagers					
Children					
People fishing					
People bike riding			11		
People sleeping					
Dogs off leash					
Parking area use					
Graffiti					
Other					

Record the following additional information:

General Information - Briefly describe your activities today. (If you drove, biked or walked and the areas you monitor etc)

WALKED NORTH + SOUTH SIDE OF RIVER

Incidents - List any incidents that happened (i.e. new graffiti, vandalism, complaints, trash, evidence of people living out there, etc. *Mark on the map to pinpoint the area for us.)

N/A

User Conflict - Describe conflicts that you saw or became aware of today.

N/A

Comments - Any additional information that we need to know.

ACTIVE CAMP NEAR MORENO BRIDGE (SOUTH SIDE) NEAR BRAZILIAN PEPPER TREES; TENT ACTIVE (NORTHSIDE) IN FANS NEAR BRAZILIAN PEPPER TREES

San Diego River Park Foundation Park Watch Log Form

Name Ross + Tom Date 2/19/2013
 Area N/S MVP Begin/End Time 10:00 AM - 2:00 PM Total Time 4 HRS

Put an X in the boxes for things you witnessed while on patrol

	Cottonwood Grove	YMCA Garden	Pacific Hwy Mural	Friars Rd Railroad Bridge	Other
Adults	1				
Teenagers					
Children					
People fishing					
People bike riding					1
People sleeping					
Dogs off leash					
Parking area use					
Graffiti					
Other					

Record the following additional information:

General Information - Briefly describe your activities today. (If you drove, biked or walked and the areas you monitor etc)

WALK NORTH + SOUTH SIDE OF RIVER

Incidents - List any incidents that happened (i.e. new graffiti, vandalism, complaints, trash, evidence of people living out there, etc. *Mark on the map to pinpoint the area for us.)

N/A

User Conflict - Describe conflicts that you saw or became aware of today.

N/A

Comments - Any additional information that we need to know.

(2) ACTIVE ENCAMPMENT (N) NEAR PEPPER TREE ; (1) ACTIVE ENCAMPMENT NEAR PEPPER TREE (S); ~~SCATTERED~~ TRASH NEAR MURAL AND UNDER PCH BRIDGE ; ~~(1)~~ (2) ACTIVE ENCAMPMENTS ON RIVERBANK (N).

San Diego River Park Foundation Park Watch Log Form

Name Ross / Tom Date 2/24/2013
 Area MVP South Begin/End Time 10:00AM - 2:00PM Total Time 4 HR

Put an X in the boxes for things you witnessed while on patrol

	Cottonwood Grove	YMCA Garden	Pacific Hwy Mural	Friars Rd Railroad Bridge	Other
Adults					
Teenagers					
Children					
People fishing					
People bike riding					
People sleeping					
Dogs off leash					
Parking area use					
Graffiti					
Other					

Record the following additional information:

General Information - Briefly describe your activities today. (If you drove, biked or walked and the areas you monitor etc)

WALKED / CHECKED ON RESTORATION AREAS

Incidents - List any incidents that happened (i.e. new graffiti, vandalism, complaints, trash, evidence of people living out there, etc. *Mark on the map to pinpoint the area for us.)

NEW GRAFFITI ON MORENO BRIDGE (SOUTH)

User Conflict - Describe conflicts that you saw or became aware of today.

N/A

Comments - Any additional information that we need to know.

TRASH UNDER PCH. (2) BIKES IN COTTONWOOD GROVE
TRASH GETTING BIGGER (E) MORENO BRIDGE (2) SHOPCARTS
TRASH NEAR RAILROAD SOUTH BANK - HEARD PEOPLE
IN BUSHES

San Diego River Park Foundation Park Watch Log Form

Name TOM / ROSS Date 3/4/2013
 Area MVP SOUTH Begin/End Time 1:00 P.M. - 4:00 P.M. Total Time 3 HRS

Put an X in the boxes for things you witnessed while on patrol

	Cottonwood Grove	YMCA Garden	Pacific Hwy Mural	Friars Rd Railroad Bridge	Other
Adults					
Teenagers					
Children					
People fishing					
People bike riding					
People sleeping					
Dogs off leash					
Parking area use					
Graffiti					
Other					

Record the following additional information:

General Information - Briefly describe your activities today. (If you drove, biked or walked and the areas you monitor etc)

WALKED AREA

Incidents - List any incidents that happened (i.e. new graffiti, vandalism, complaints, trash, evidence of people living out there, etc. *Mark on the map to pinpoint the area for us.)

NEAR GRAFFITI ON MORENO BRIDGE WHERE PAINTED

User Conflict - Describe conflicts that you saw or became aware of today.

Comments - Any additional information that we need to know.

ENCAMPMENT ACTIVE (N) #22

San Diego River Park Foundation Park Watch Log Form

Name Ross / Tom Date 3/10/2013
 Area MVP NORTH Begin/End Time 10:00 AM - 2:00 P.M. Total Time 4 HRS

Put an X in the boxes for things you witnessed while on patrol

	Cottonwood Grove	YMCA Garden	Pacific Hwy Mural	Friars Rd Railroad Bridge	Other
Adults		5			
Teenagers					
Children					
People fishing					
People bike riding					
People sleeping					
Dogs off leash					
Parking area use					
Graffiti					
Other					

Record the following additional information:

General Information - Briefly describe your activities today. (If you drove, biked or walked and the areas you monitor etc)

WALKED, MONITORED, SURVEYED

Incidents - List any incidents that happened (i.e. new graffiti, vandalism, complaints, trash, evidence of people living out there, etc. *Mark on the map to pinpoint the area for us.)

2 SIGNS WERE TAKEN DOWN

User Conflict - Describe conflicts that you saw or became aware of today.

N/A

Comments - Any additional information that we need to know.

8 CAMPS ACTIVE, 7 DUMP SITES, 5 HOMELESS PEOPLE LIVING IN MVP NORTH

San Diego River Park Foundation Park Watch Log Form

Name Tom / Ross / NIK Date 3/11/2013
 Area MVP SOUTH / NORTH Begin/End Time 9:30 A.M. - 2:00 P.M. Total Time 4.5 HRS

Put an X in the boxes for things you witnessed while on patrol

	Cottonwood Grove	YMCA Garden	Pacific Hwy Mural	Friars Rd Railroad Bridge	Other
Adults	///		///		
Teenagers					
Children					
People fishing				1	
People bike riding	///				
People sleeping					
Dogs off leash					
Parking area use					
Graffiti					
Other					

Record the following additional information:

General Information - Briefly describe your activities today. (If you drove, biked or walked and the areas you monitor etc)

WALKING / MONITORING

Incidents - List any incidents that happened (i.e. new graffiti, vandalism, complaints, trash, evidence of people living out there, etc. *Mark on the map to pinpoint the area for us.)

NEW HOMELESS CAMPS; TEARING DOWN SNOW FENCE

User Conflict - Describe conflicts that you saw or became aware of today.

N/A

Comments - Any additional information that we need to know.

FOUND NUMEROUS NEW CAMPS + DUMP SITES PLACED ON IM RIVERS