

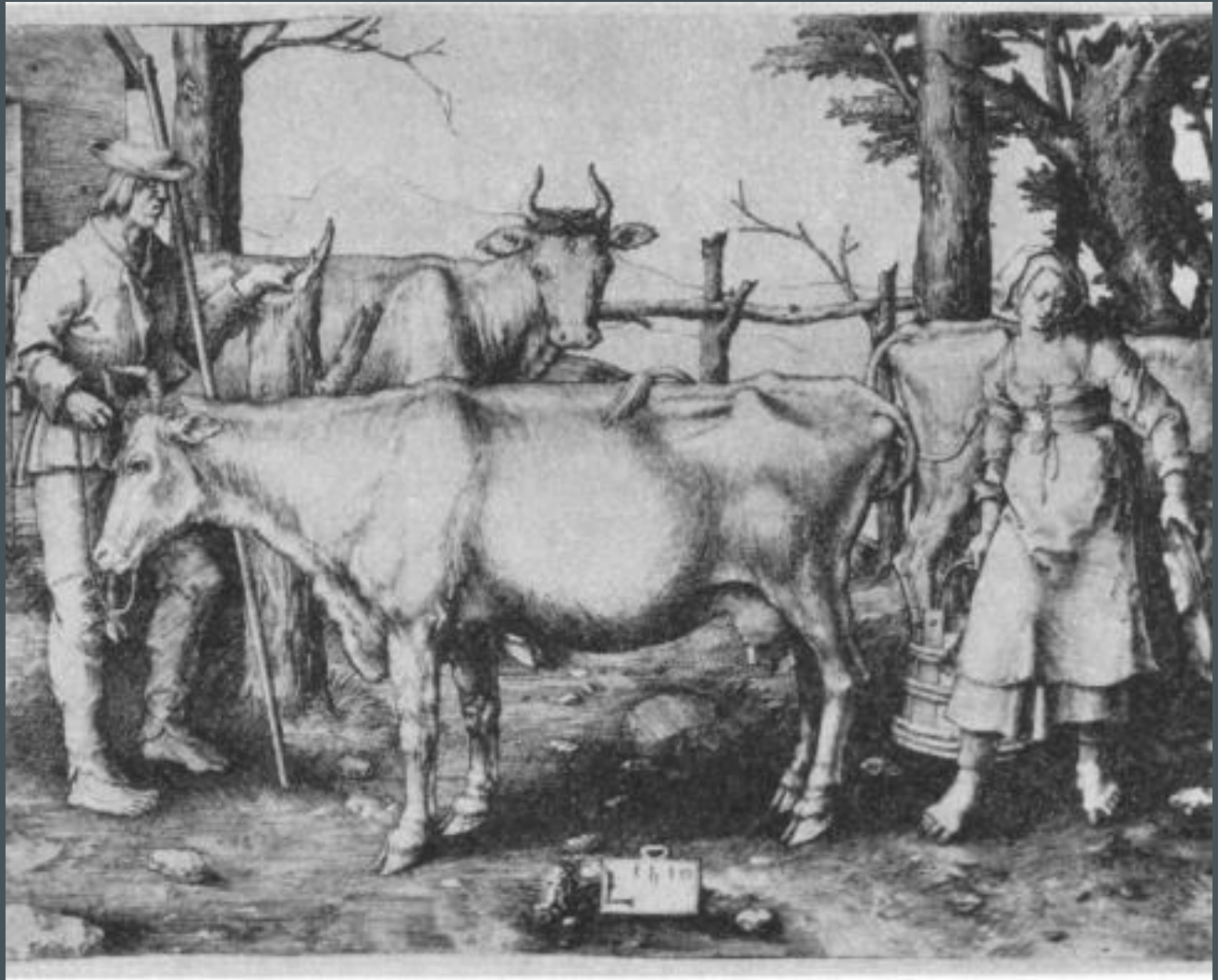
HISTORY OF

# LIVESTOCK GRAZING AT RJER AND HCWA

(JAMUL RANCH)

---

# HISTORY DOESN'T START WITH THE COW



# INDIGENOUS PEOPLES





## INDIGENOUS 'LIVESTOCK' (BROWSERS)



**Livestock Grazing  
Starts Here**

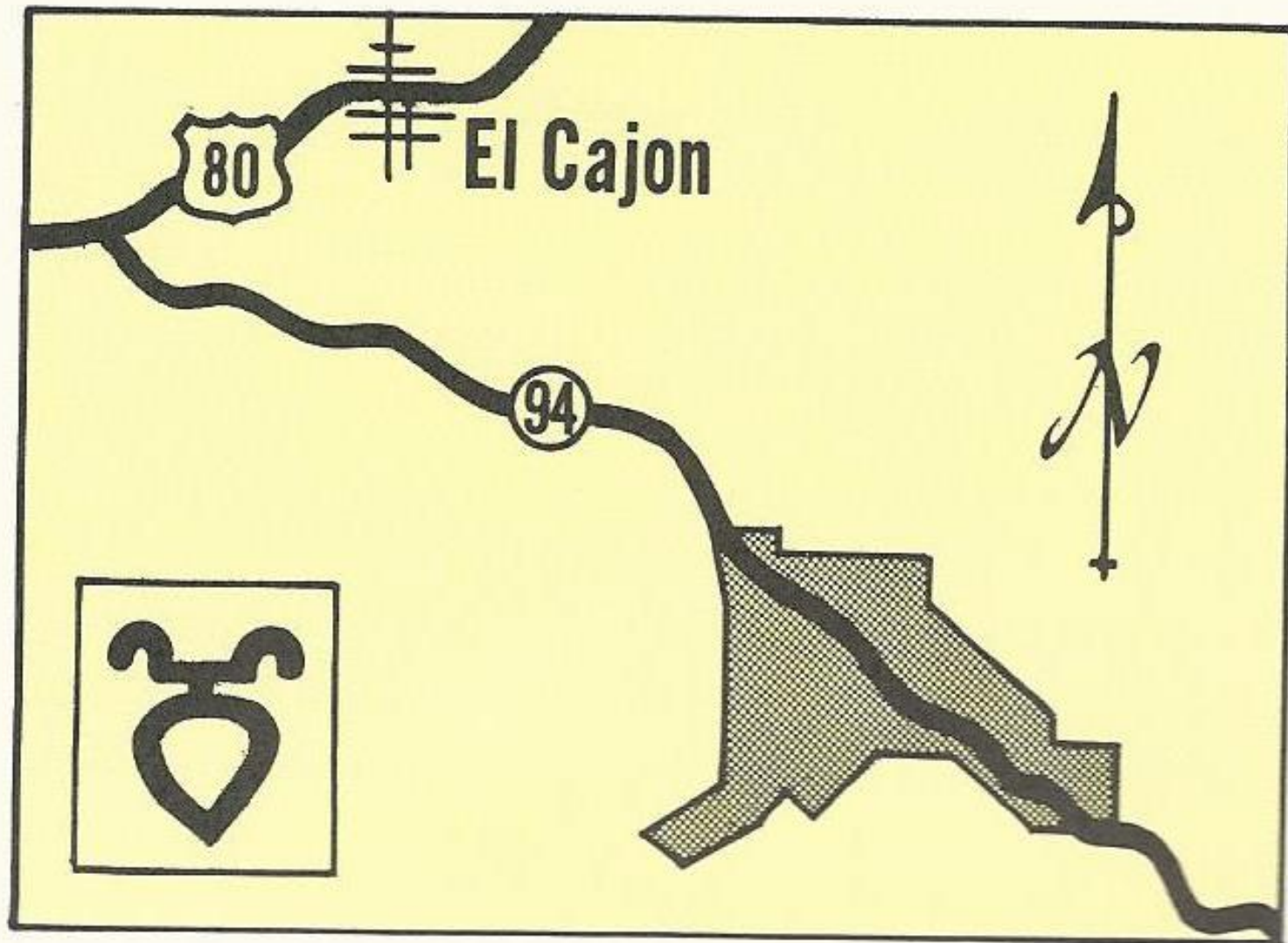


## HISTORY

- 1769-1821 - Spanish Period – Missions and exploration
- 1821-1848 - Mexican Period – Mexican settlement and development of Rancho system
- 1848-Present – American Period following Mexican / American War

# MEXICAN RANCHERO PERIOD





1829 GRANTED TO  
PIO PICO

LAST MEXICAN  
GOVERNOR PRIOR TO  
TREATY OF  
GUADALUPE-  
HIDALGO (1848)





# AMERICAN PERIOD

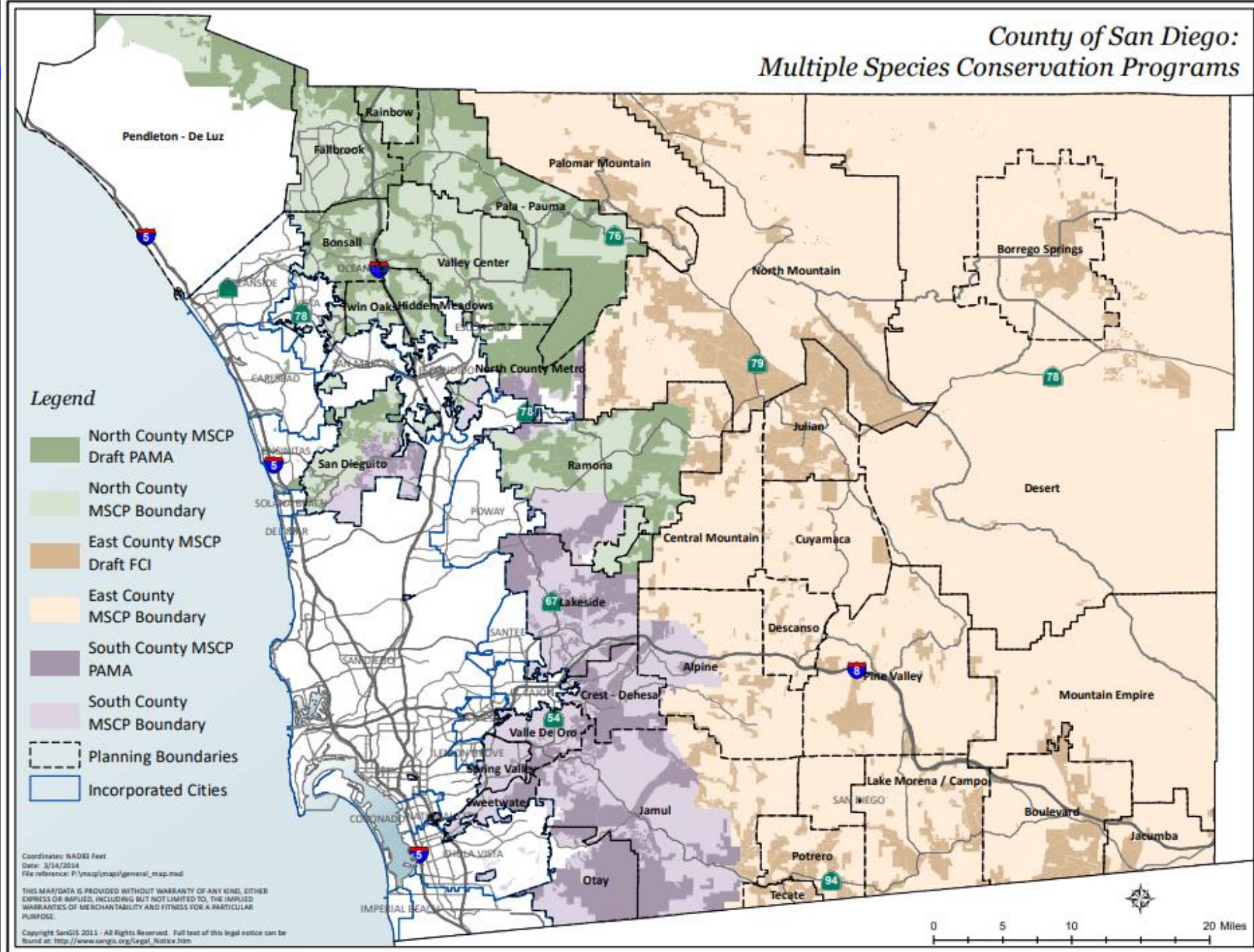






GEORGE R.  
DALEY  
PURCHASED  
IN 1929

# SOUTH COUNTY MSCP 1997





Daley Family

RJER



THE  
TRUST  
FOR  
PUBLIC  
LAND

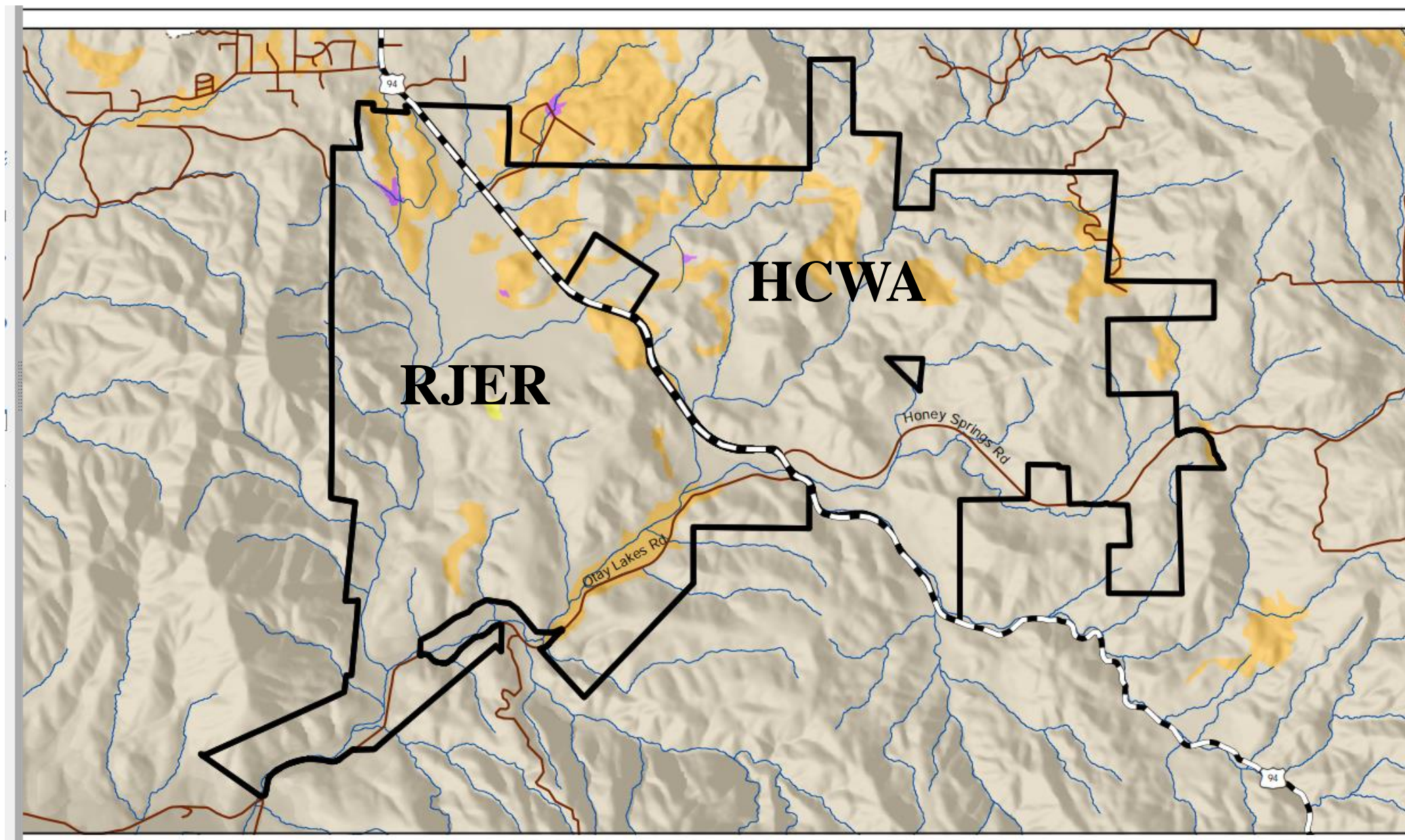
RJER



HCWA







OVER 200  
YEARS OF  
GRAZING

THEN.....





## Baseline Biodiversity Survey for the Rancho Jamul Ecological Reserve

U.S. Geological Survey Final Report



Prepared for:

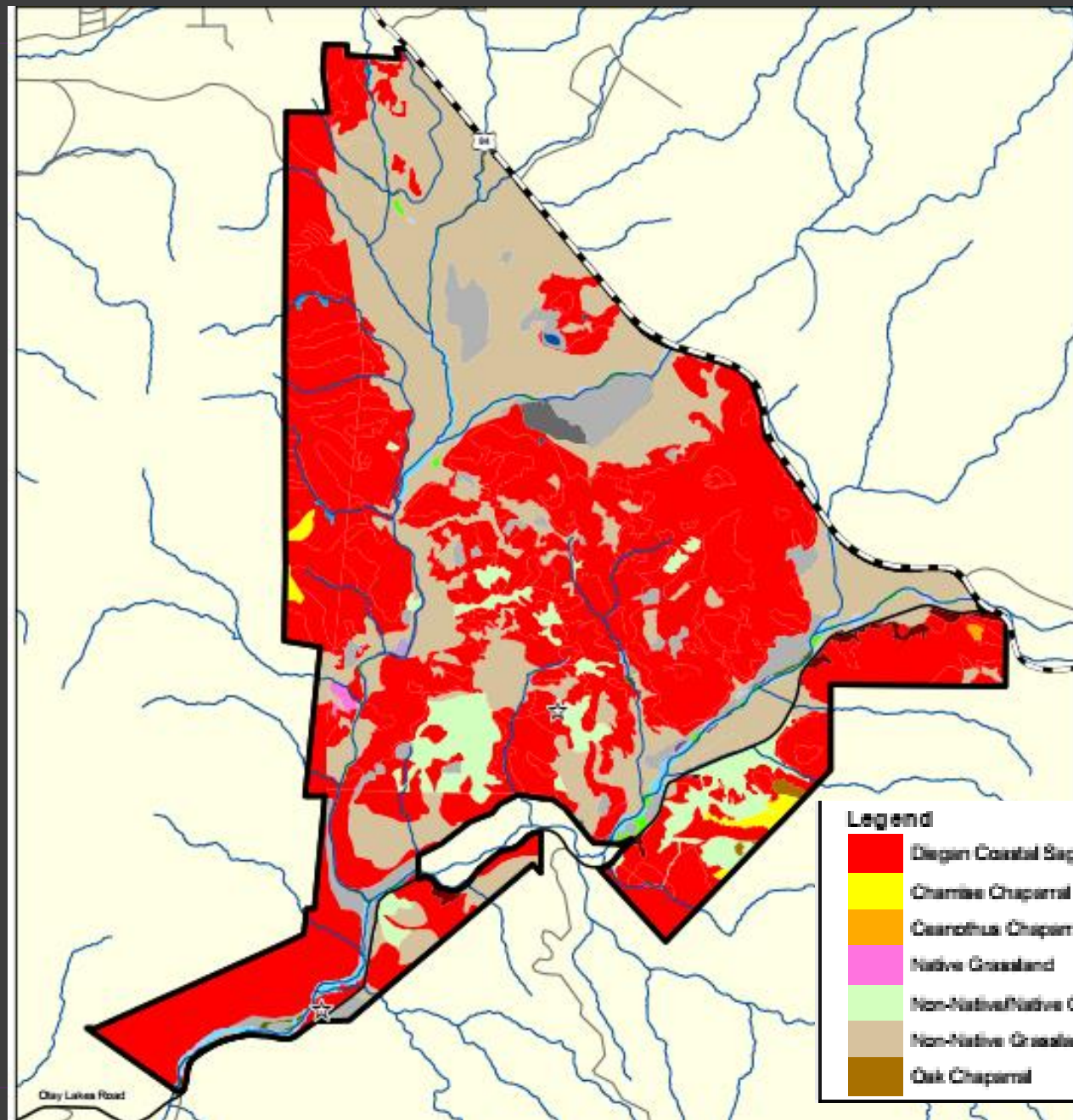
California Department of Fish & Game

U.S. DEPARTMENT OF THE INTERIOR  
U.S. GEOLOGICAL SURVEY  
WESTERN ECOLOGICAL RESEARCH CENTER

## Baseline Surveys 1997 - 2004



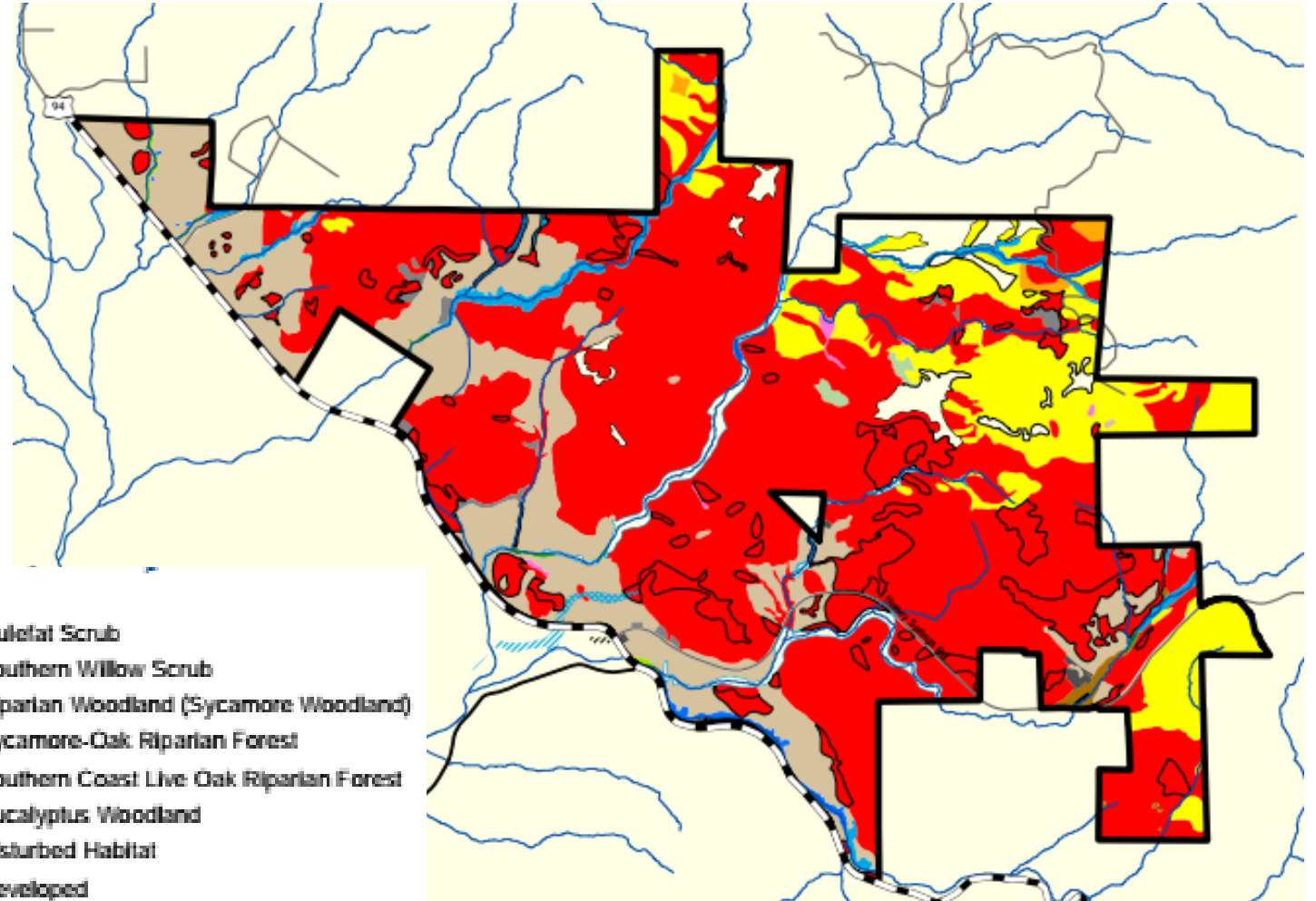
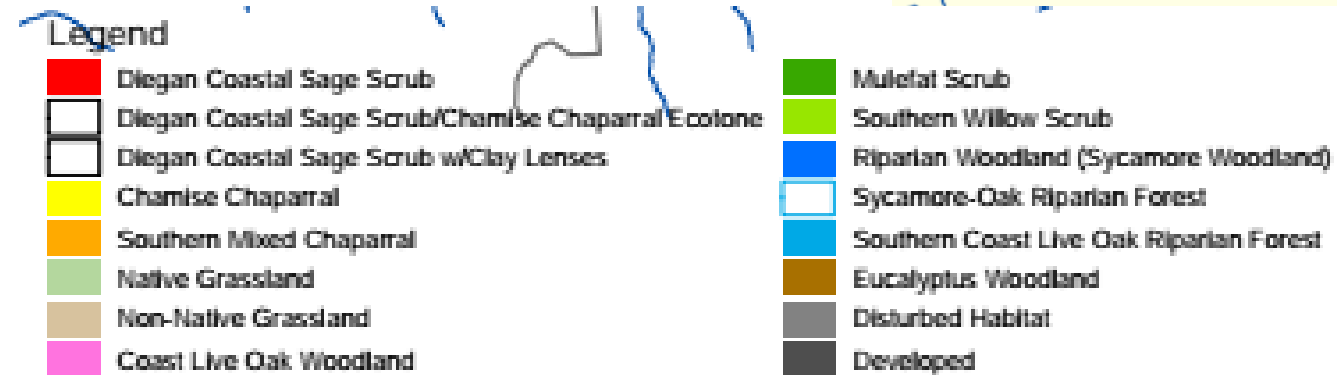
# Vegetation Communities



## Legend

<span style="color: red;">■</span> Diegan Coastal Sage Scrub	<span style="color: brown;">■</span> Coast Live Oak Woodland	<span style="color: cyan;">■</span> Southern Coast Live Oak Riparian Forest
<span style="color: yellow;">■</span> Chamise Chaparral	<span style="color: purple;">■</span> Clementine Alkali Marsh	<span style="color: blue;">■</span> Open Water
<span style="color: orange;">■</span> Ceanothus Chaparral	<span style="color: darkpurple;">■</span> Coastal and Valley Fresh Water	<span style="color: lightgray;">■</span> Disturbed Habitat
<span style="color: magenta;">■</span> Native Grassland	<span style="color: olivegreen;">■</span> Mulefat Scrub	<span style="color: gray;">■</span> Developed
<span style="color: lightgreen;">■</span> Non-Native/Native Grassland	<span style="color: limegreen;">■</span> Southern Willow Scrub	☆ Vernal Pool
<span style="color: tan;">■</span> Non-Native Grassland	<span style="color: lightblue;">■</span> Riparian Woodland (Sycamore Woodland)	
<span style="color: brown;">■</span> Oak Chaparral	<span style="color: lightcyan;">■</span> Southern Arroyo-Willow Riparian Forest	

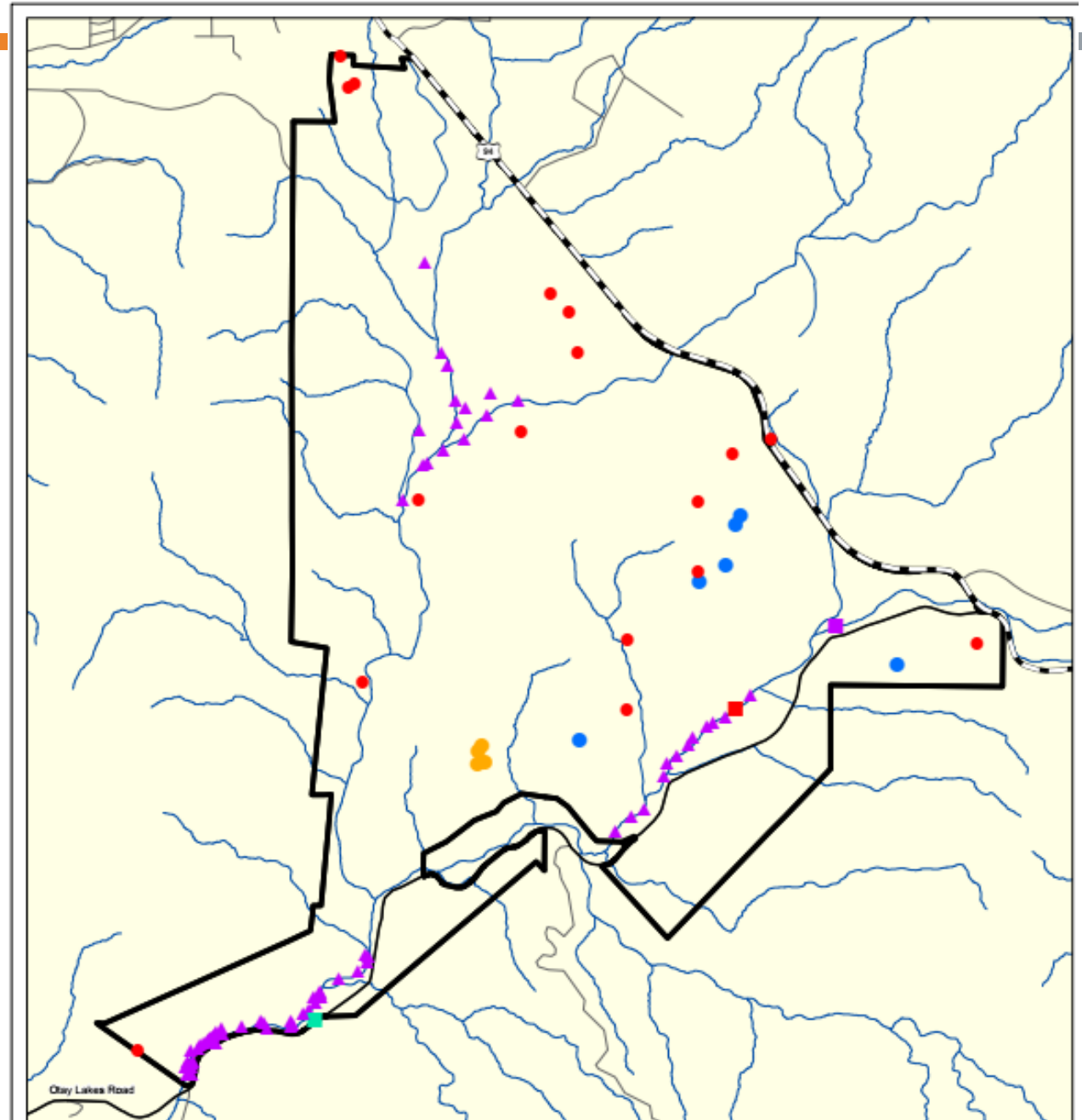
# Vegetation Communities



## Threatened and Endangered Species

### Legend

- California gnatcatcher
- Historical California red-legged frog Location (1950)
- ▲ Least Bell's vireo
- Ojai tarplant
- Peregrine falcon
- Quino checkerspot
- San Diego ambrosia







## Burrowing Owls (BUOW)

- 2006 & 2007 Artificial Burrows Installed
- 2006-2013 Herbicide and Mowing >10 acres
- 2012 Burrows Rehabilitated and New Added
- 1-2 Wintering BUOW









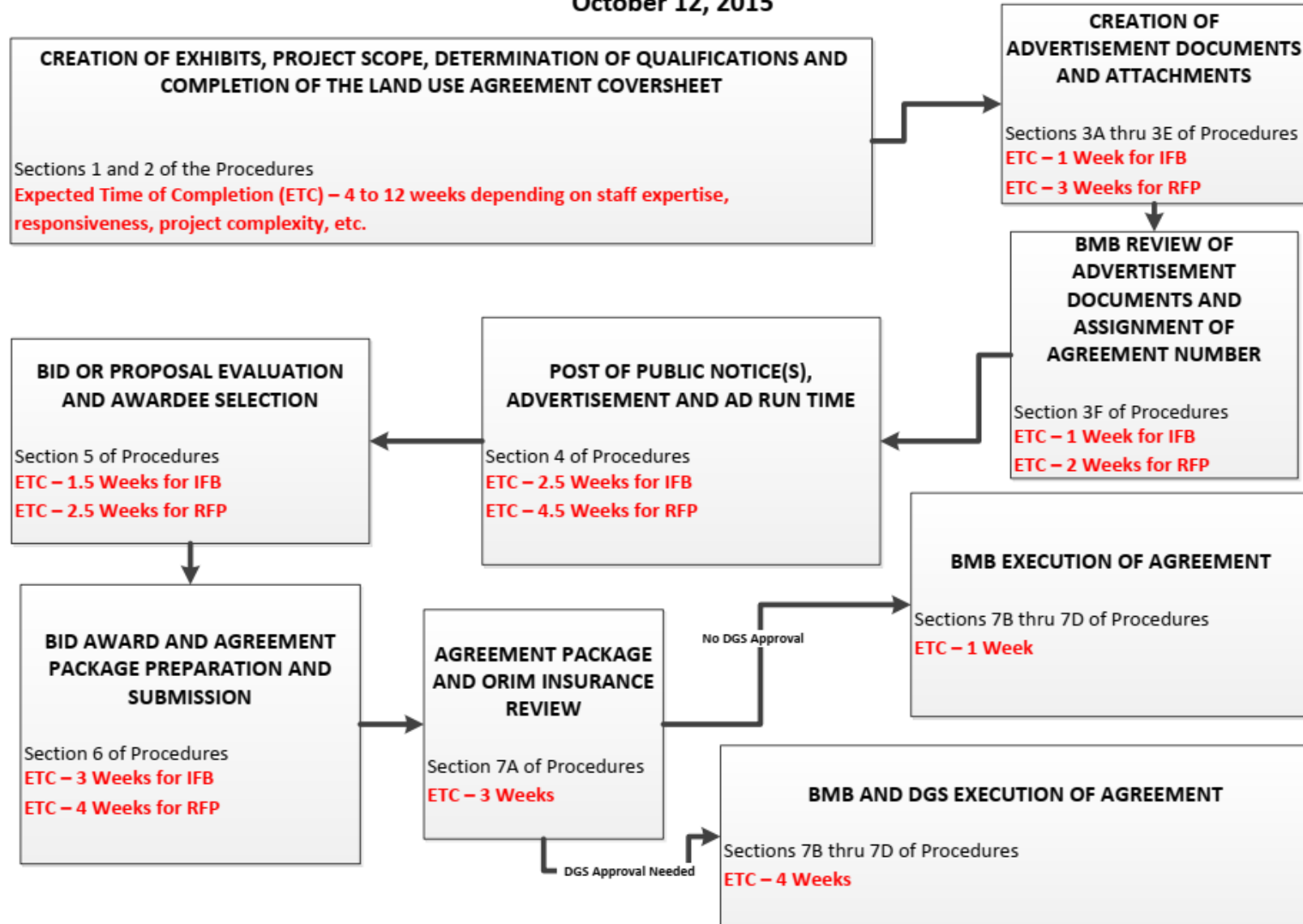


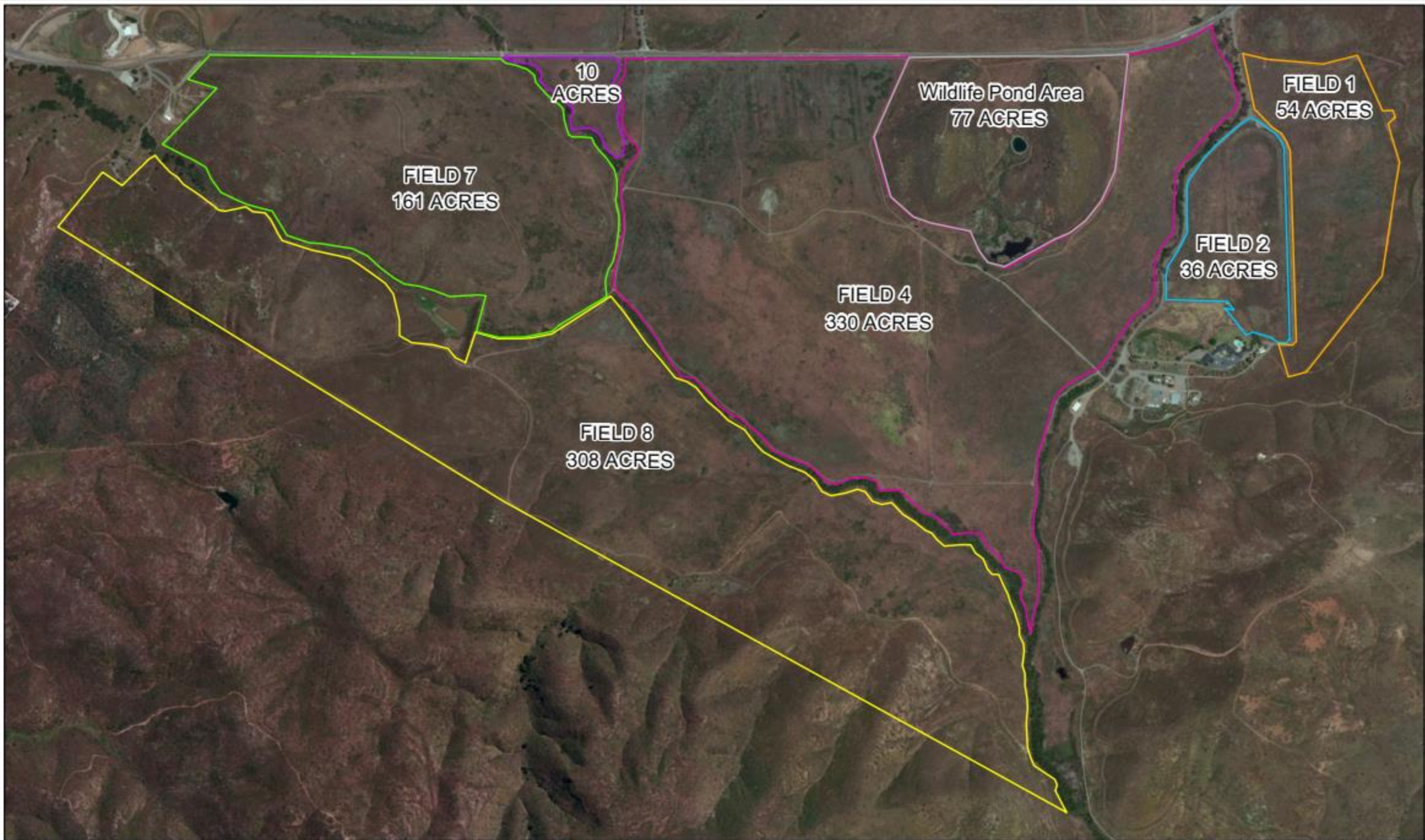
# Burrowing Owl Habitat Management Area (BOHMA)





**Department of Fish and Wildlife**  
**Land Use Agreement Procedures Flowchart and Time Expectations**  
**October 12, 2015**









CameraNIGHT0 59°F15°C

03-21-2014 17:45:0

## 2014 Plan

- 5 Year Limit
- Max 100 AUM
- No usage or biological monitoring (required)
- Development of pastures and facilities (wildlife friendly fencing)









Ⓜ TROPHY CAM











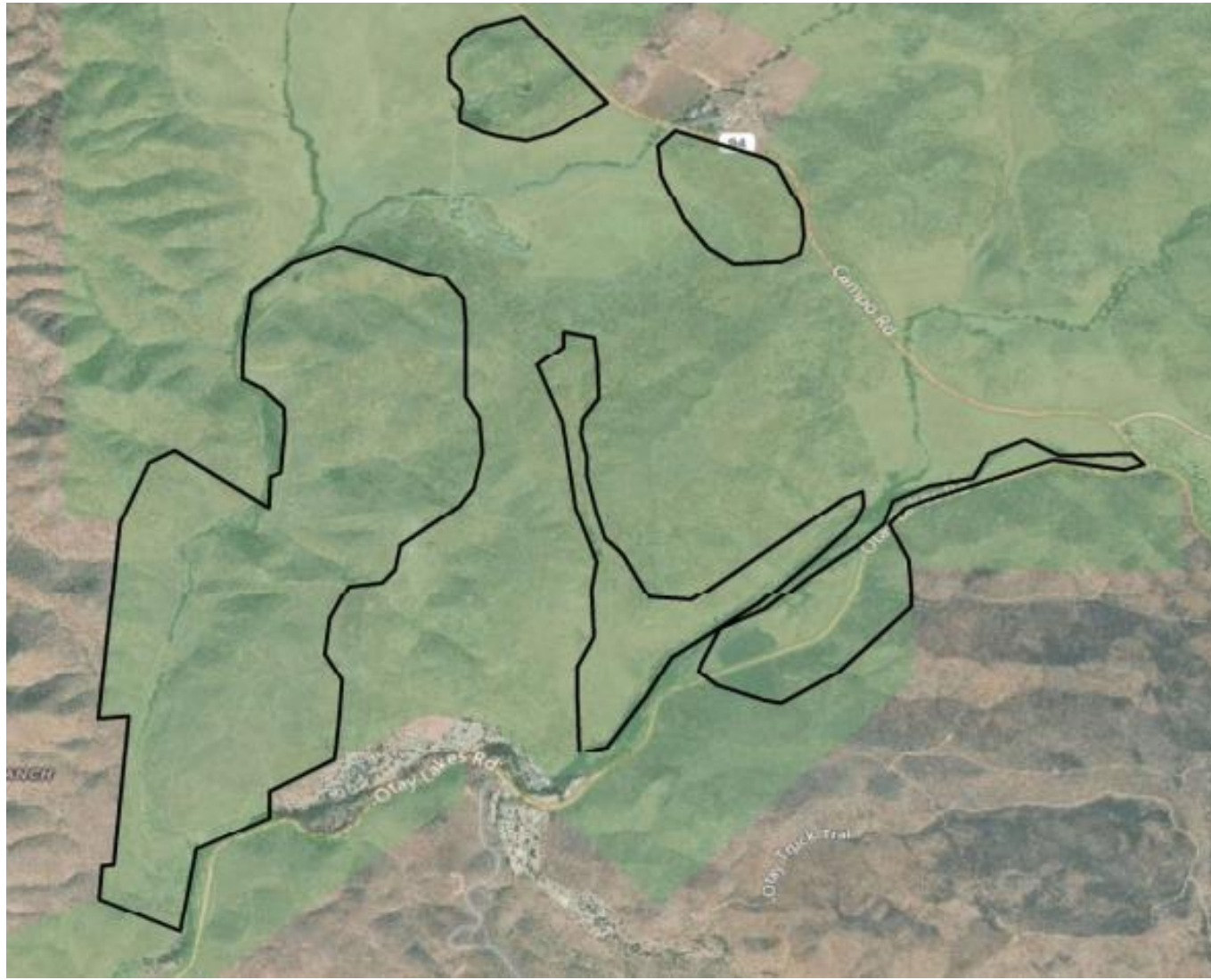
# Gate Fire

May 20, 2017









## **September 1, 2017 Expansion**

- **600 acres of ‘Soft-line’ (Ecological Sites)**
- **CDFW Replaced existing fencing along Otay Lks Road**



April 2017





April 2018





## 2019 PLAN

- RFP vs IFB
- Expansion into HCWA
- Usage monitoring
- Long term monitoring
- Exclusions (not required in CDFW Permit)

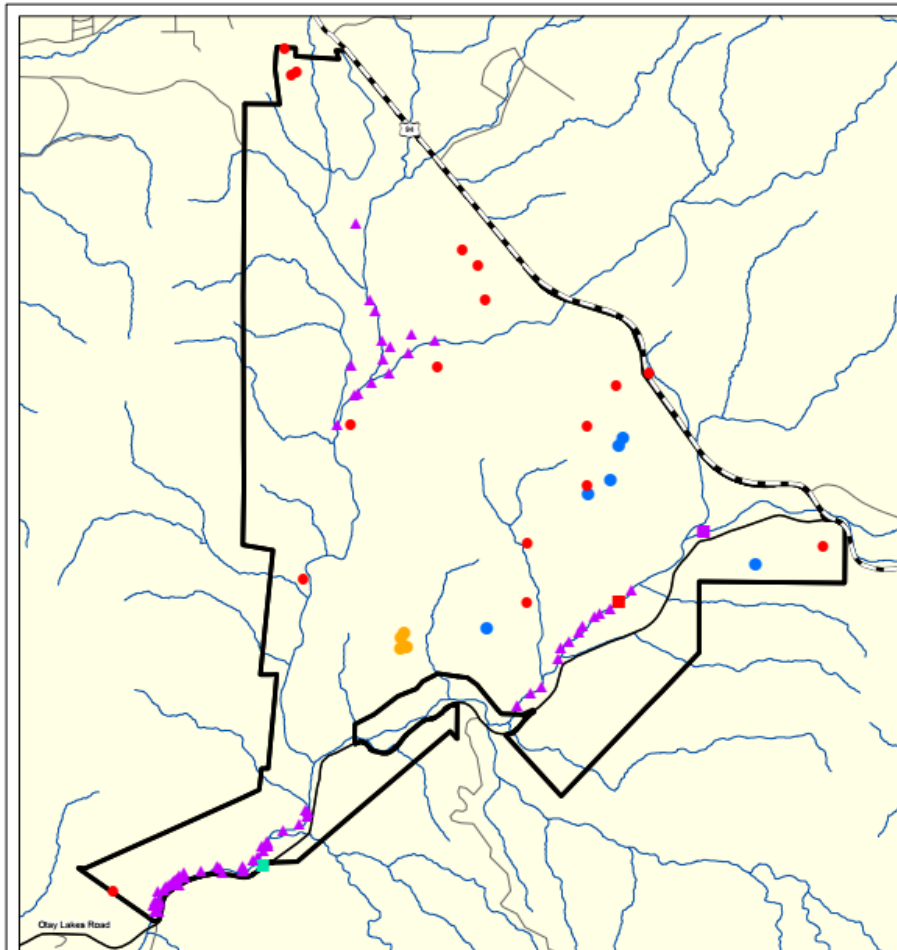


# RETURN OF CATTLE TO HCWA





# “WE KNOW WHAT HAPPENS WHEN WE DO NOTHING”



## Legend

- California gnatcatcher
- Historical California red-legged frog Location (1950)
- Least Bell's vireo
- Otay tarplant
- Peregrine falcon
- Quino checkerspot
- San Diego ambrosia



*COME WITH ME*  
(NEIL DEGRASSE TYSON, COSMOS)