



## Progress Report for Earth Discovery Institute: Final Report August 2013 - July 2014

### ***SANDAG/Transnet/EMP: South San Diego County Community Outreach and Habitat Stewardship***



This report describes Earth Discovery Institute's (EDI) progress in conducting outreach efforts in south San Diego County by assisting the US Fish and Wildlife Service (USFWS), California Department of Fish and Wildlife (CDFW), Endangered Habitats Conservancy (EHC), US Bureau of Land Management (BLM), Conservation Biology Institute (CBI), and The Nature Conservancy (TNC) with community and volunteer events that focus on improving public knowledge about and involvement with conserved lands in southern San Diego County.

#### **Task 1: Interpretive Events**

Task	Task Name	Description	Quantified Results for Project	Deliverables
1	Interpretive Events	Coordinate or conduct interpretive outreach such as guided hikes or educational events	8 interpretive events for at least 100 participants annually, at least 3 of which will focus on focal, covered, threatened or endangered species or habitats.	Flyers and training materials for events; quarterly summary of dates, numbers of participants, description of events. Final report with total numbers, list of focal, covered, threatened or endangered species or habitats and photos of events.

No interpretive events were conducted in July 2014. **For the project, EDI conducted or participated in 19 interpretive events, nine of which addressed covered/sensitive species or habitats for 381 total and 373 unique participants. Covered/sensitive species or habitats included:**

- *Ambrosia pumila*
- *Engelmann oak*
- *Multiple native grasses*
- *Least Bell's vireo*
- *California gnatcatcher*
- *Coast horned lizard*
- *Coastal sage scrub habitat*
- *Oak and willow riparian habitats*
- *Native grass and forb-lands*

Reporting Period	Number of Events	Number of Events Focused on Covered/Sensitive Species or Habitats	Event Hours	# of Participants	Participation Hours	# of Unique Participants
July 2014	0	0	0	0	0	0
Q4 Total	6	4	13	50	149	49
Q3 Total	8	4	20	142	391	135
Q2 Total	1	0	5	52	13	52
Q1 Total	4	1	13.5	137	64	137
Project Total	19	9	51.5	381	617	373

Some interpretive events are supported by volunteers such as expert speakers who donate their time or weekly volunteers who serve assist with implementation of events. The hours of volunteer time contributed in support of interpretive events is reflected below.

Reporting Period	Number of Interpretive Events Assisted by Volunteers	# of Volunteers Assisting with Events	Total Volunteer Hours
July 2014	0	0	0
Q4 Total	0	0	0
Q3 Total	3	4	17
Q2 Total	1	4	13
Q1 Total	0	0	0
Project Total	4	8	30



Conservation is Learning...

## Task 2: Volunteer Work Days

Task	Task Name	Description	Quantified Results for Project	Deliverables
2	Volunteer Work Days	Coordinate or conduct volunteer work projects at partner sites	16 volunteer habitat events for at least 150 participants annually at least 6 of which will focus on focal, covered, threatened or endangered species or habitats. 80, 3-hour annual meetings with at least 5 participants of the weekly volunteer crews in the Crest and Jamul areas. 30 weekly volunteer meetings will focus on at-risk/high priority species/habitats.	Flyers for events. Quarterly summary of dates, numbers of participants, description of events. Final report with total numbers, list of focal, covered, threatened or endangered species or habitats and photos of events.
		Work with SDMMMP to document value of volunteer habitat efforts	Provide SDMMMP with costs and value of volunteer contributions for 3 projects.	List of selected projects by the end of the first quarter of the project. One annual report for each project summarizing volunteer and volunteer coordination activities. One annual report that documents costs for each project including paid labor, volunteer labor, travel time, and materials.

### One-time Volunteer Events

For the entire project period, EDI conducted 11 one-time volunteer events for 133 participants/119 unique volunteers, contributing 430 hours. Nine of the eleven events addressed focal, covered, threatened or endangered species or habitats. *Covered/sensitive species or habitats included:*

*Native grasslands*

*Oak riparian*

Date	Event Description	Number of Events	Number of Events Focused on Covered/Sensitive Species or Habitats	Event Hours	# of Participants	Total Volunteer Hours	# of Unique Volunteers
July 12, 2014	Mission Manzanita Seedling Search	1	0	3	5	15	5
July 16, 2014	Fed-Ex Employees Volunteer Day	1	1	3	11	33	11
July 2014		2	1	6	16	48	16
Q4 Total		1	1	4	2	8	2
Q3 Total		3	2	10.5	56	160	52
Q2 Total		3	3	11	27	86	21
Q1 Total		2	2	8	32	128	28
Project Total		11	9	39.5	133	430	119





Conservation  
is Doing...





## Weekly Volunteers

EDI supervises and coordinates the work of 2 weekly conservation work crews; one at the Crestridge Complex responsive to the direction of EHC and CBI, and one based at Rancho Jamul Ecological Reserve responsive to the direction of CDFW, USFWS, BLM, TNC and CBI for all related preserved lands and conservation projects. **For July 2014, 7 Unique Volunteers provided 83 hours of restoration, monitoring, and maintenance work for 4 of our 6 partner agencies. Four of the 9 workdays contributed 33 hours of service, (noted in *bold, italics*) addressed covered/sensitive species or habitats.**

For the entire project, Jamul volunteers focused on oak riparian restoration weeding, irrigating, and collecting data on volunteer planted area at RJER and SDNWR, irrigating CSS areas planted during student visits to SDNWR, irrigating the TNC/CDFW Tecate cypress nursery, regulation/protective sign installation for CDFW and USFWS, and maintaining the RJER native plant demonstration garden. Crest volunteers focused on oak riparian and grassland restoration by irrigating and weeding seedling oaks and student-planted grasses, installation of irrigation system into the riparian area, installation of protective signage, and removal of new invasive species at South Crest, maintenance of the CER native plant demonstration garden, and trail maintenance. ***For the project, covered/sensitive species or habitats addressed by weekly volunteers included:***

- ***Burrowing Owl***
- ***Western pond turtle***
- ***Tecate Cypress***
- ***Vernal Pool habitat***
- ***Coastal sage scrub habitat***
- ***Oak and willow riparian habitats***
- ***Native grass and forb-lands***

Team/Time Period	# of Volunteers per Week	# of Workdays in this Reporting Period	# of Workdays in this Reporting Period for at-risk/high priority species/ habitats.	Hours of Conservation Work for at-risk/high priority species/ habitats.	Total Hours of Conservation Work	# of New Volunteers
Crest	2-3	5	2	18	47	1
Jamul	2-4	4	2	15	36	0
July 2014	4-7	9	4	33	83	1
Q4 Total	3-7	19	13	84	129	0
Q3 Total	3-7	32	20	123	195	1
Q2 Total	3-9	24	19	121	158	1
Q1 Total	3-7	14	5	21	138	1
Project Total	3-9	98	61	382	703	4

## Photo Monitoring

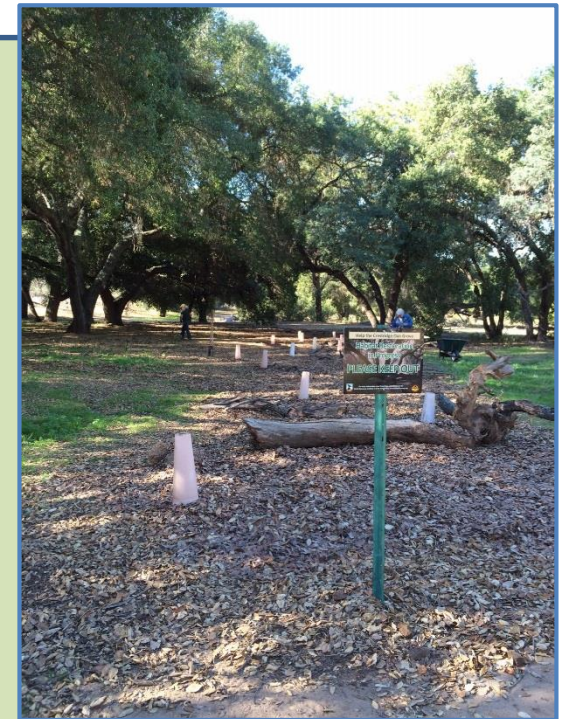
EDI and SDMMMP staff met in November 2013 to identify target events and cost measurement plans. Photo Monitoring was identified as the target project. Although this is one area of study vs. the '3 projects' described in the scope of work, photo monitoring included a total of 6 events (1 training/5 monitoring) events which is what the 'projects' refers to in the scope. In partnership with CBI, EDI completed all the guides needed to direct the field work. Field work was conducted in May and June 2014. Photo Monitoring was conducted for one MSCP listed plant species (Lakeside lilac), and for grass/forb-lands vegetation habitat being restored specifically in support of Otay tarplant, Quino checkerspot butterfly, burrowing owl. EDI monitored costs and all resources associated with this project and submitted related data to SDMMMP on July 31, 2014. Compiled photo data has been sent to CBI for analysis and reporting. Cost analysis and

Photo Monitoring reports will be submitted as addenda when completed. ***All Photo Monitoring for the project addressed covered/sensitive species or habitats. These covered/sensitive species or habitats included:***

- ***Lakeside ceanothus***
- ***Quino checkerspot butterfly***
- ***Native grass and forb-lands***

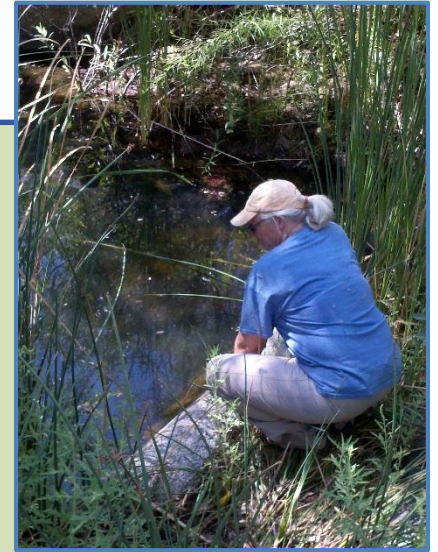
Date	Event Hours	# of Participants	# of Unique Volunteers	Total Volunteer Hours
July 2014	0	0	0	0
<b>Q4 Total</b>	<b>15</b>	<b>8</b>	<b>6</b>	<b>24</b>
<b>Q1-Q3 Total</b>	<b>0</b>	<b>0</b>	<b>0</b>	<b>0</b>
<b>Project Total</b>	<b>15</b>	<b>8</b>	<b>6</b>	<b>24</b>

Conservation  
is...





# ...Commitment



### Task 3: Student Field Visits

Task	Task Name	Description	Quantified Results for Project	Deliverables
3	Student Visits	Conduct service-learning field visits for students from school districts adjacent to partner lands	1,000 K-12 students annually visit partner lands to learn science and conduct environmental stewardship activities that support management goals. 120 students will visit the Conservation Education Center (CEC) at (RJER). 120 students will visit the SDNWR.	Quarterly summary of dates, numbers of students, participating schools, districts and grade levels of students. Final report with total numbers, description of habitat-related activities, and photos of events.

No student field visits took place in July 2014. For the entire project,

- 1164 students visited Crestridge Ecological Reserve (CER)
- 180 students have Rancho Jamul Ecological Reserve (RJER)
- 113 students have San Diego National Wildlife Refuge (SDNWR)

For the project, students visiting CER participated in grasslands restoration, planting 1164 Purple Needlegrass (*Stipa pulchra*) plants. Students visiting RJ ER created over 300 native seed balls and propagated over 200 native plant cuttings that can be used for restoration and native gardening projects. Students visiting the SDNWR planted 80 coastal sage scrub shrubs in a significantly disturbed area of the Sweetwater Interpretive Loop near the Sweetwater River. Students also participated in hands-on science curriculum related to watersheds/water quality/erosion, food web/animal observation/tracking/clues to animal behavior from skulls and scat/native plant adaptations, habitat and weather observation/data recording. **EDI was able to increase the number of students visiting RJER from 120 to 180. School district scheduling/transportation issues decreased the number of classes visiting the SDNWR from 4 to 3 resulting in shortfall of 7 students visiting this site. Overall, 293 EDI students visited these 2 locations for the first time, exceeding the combined goal of 240 by 53 students. By minimizing administrative expenses, EDI was able to direct additional support to student participation bringing a total of 1,457 students to conserved land, a nearly 50% increase from the target of 1,000 students.**

Date	School Name	District	Grade Level	Field Trip Location	# of Students	Conservation Activity	Conservation Hours (.5 hrs X # of students)	Hours of Conservation Work for at-risk/high priority species/habitats.
July 2014	na	na	na	na	0	na	0	0
Q4 Total					50		25	25
Q3 Total					868		434	349
Q2 Total					539		269.5	269.5
Q1 Total					0		0	0
Project Total					1,457		728.5	643.5



In addition to field visits, some of the participating students conducted follow-up Service-learning projects. These projects, selected by students and their teachers, manifest their science and stewardship learning to the benefit the students' school community or neighborhood. In total, 240 students from 3 schools, 8 classrooms and 2 school districts completed 3 very interesting, creative and helpful projects.

- 1<sup>st</sup> grade classes from Rolando Elementary in the La Mesa-Spring Valley district made seed balls with local wildflower seeds. They packaged and distributed the seed balls to family and neighbors. Students shared what they learned about native and non-native plants and their effects on the local habitats.
- 4<sup>th</sup> grade students from Blossom Valley Elementary in the Cajon Valley district completed individual posters with eco-friendly messages related to their experience at Crestridge Ecological Reserve. Posters from this project will be selected to be made into metal trail (directional) signs that will be used on the reserve.
- 5<sup>th</sup> grade students from College Prep Middle School in the La Mesa-Spring Valley district listened to a presentation on local pollinators and their purpose in the habitat. Students then did their own research and created posters with positive messages and facts to help the community learn to "Protect Our Pollinators". These will be used as interpretive posters at trailhead kiosks for several EDI partner agencies.



# Conservation is...

## Science and Stewardship

#### Task 4: Community Awareness

Task	Task Name	Description	Quantified Results for Project	Deliverables
4	Community Awareness	Build community awareness of and access to conservation events and information.	Publish a quarterly electronic newsletter that features species and habitats of concern and showcases volunteer involvement. Maintain a website that gives community members and students access to habitat information, informs them of volunteer and interpretive opportunities, and provides means of giving feedback to land managers regarding safety and habitat observations.	Quarterly summary with copy of newsletter issues and numbers of copies distributed. Final report with all publication dates and total numbers of distributed newsletters.

In July 2014, 2 email blasts were sent to EDI's contact list of approximately 1,000 subscribers about July events. The EDI website has been maintained throughout the current quarter. EDI posted 21 times on Facebook about events and conservation issues with a total of 1,387 views and 150 engaged users. **For the project, EDI distributed 4 electronic newsletters, sent 50 email blasts, and posted 179 times on Facebook for a total of 233 community awareness contacts.**

Reporting Period	Newsletter Month	# of Newsletters	# Newsletters Distributed	# Email Blasts	# of Facebook Postings	Total # of Community Awareness Contacts
July 2014	na	0	0	2	21	23
Q4	June 2014	1	1,082	11	98	110
Q3	March 2014	1	1,051	15	34	50
Q2	December 2013	1	1,084	13	7	21
Q1	September 2013	1	1,072	9	19	29
Total		4	3,239	50	179	233

#### Task 5: Volunteer Patrol

Task	Task Name	Description	Quantified Results for Project	Deliverables
5	Volunteer Patrol	Maintain and increase size and geographic scope of volunteer patrol	Maintain the volunteer patrol at CER with 20-25 members. Provide 4 sessions annually of orientation and training to all patrol members. Extend the patrol model to the SDNWR Jamul Area Patrol Recruit 10 members to the Jamul Area Patrol Maintain a log of all observational reports made by patrol members and forward all reports to appropriate managers.	Quarterly summary of dates/topics of/speakers for training sessions, numbers of new patrol members enrolled, and numbers and types of reports made by patrol members. Final report with total numbers.



The Crestridge patrol met on July 26, 2014 to receive training from biologist Michael Klein, on the insects of Crestridge ER. Nine of the current 36 members attended the 2 hour session that included a 30 minute classroom presentation and a 1.5 hr hike in the reserve to observe insects and discuss their role in the local ecosystem. Members also discussed numerous invasive insect species, how they invade the reserve, the threats they pose, and current knowledge about how to eliminate or diminish their effects. The volunteer patrol for the San Diego National Wildlife Refuge did not meet in July 2014.

**In July 2014, 7 incidents (1 dumping, 3 illegal motor vehicle activities, 1 identification of a small herd of goats, 1 evidence of target bow shooting, and 1 discovery of a preyed-on cow leg) were observed in the Crestridge complex by patrol members.**

**In July 2014, SDNWR patrol members reported 9 incidents (1 golden eagle sighting, 1 camping, 3 illegal motor vehicle activities, 2 dumping, 1 observation of buck deer skull, 1 vandalism to gate).**

Reporting Period	Incident Date	Incident Type	Incidents Reported by Patrol Members at Crestridge	Incidents Reported by Patrol Members at SDNWR	Volunteer Hours for Incident Reporting (1 incident=1hr)
July 2014	7/1/2014	goats on reserve	1		1
July 2014	7/5/2014	motorcycle		1	1
July 2014	7/13/2014	motorcycle		1	1
July 2014	7/15/2014	dumping	1		1
July 2014	7/15/2014	motorcycles	1		1
July 2014	7/16/2014	evidence of non-native species	1		1
July 2014	7/19/2014	motorcycle		1	1
July 2014	7/19/2014	dumping		1	1
July 2014	7/22/2014	illegal activity	1		1
July 2014	7/23/2014	dumping		1	1
July 2014	7/24/2014	buck deer skull observed		1	1
July 2014	7/25/2014	Vandalism to gate		1	1
July 2014	7/26/2014	motorcycle		1	1
July 2014	7/26/2014	Campers on refuge		1	1
July 2014	7/30/2014	motorcycle	1		1
July 2014	7/30/2014	motorcycle	1		1
<b>July 2014</b>			<b>7</b>	<b>9</b>	<b>16</b>

**For the entire project, 6 training sessions were provided to the 2 patrols. Two of the trainings were for the newly established SDNWR volunteer patrol. The Crest patrol increased from 28 to 34. The new SDNWR patrol gained 9 members since its inception. A total of 16 new patrol members joined the 2 crews during the project period. EDI's cumulative incident reporting has resulted in the installation of one new gate on the EHC South Crest properties and improvements to the gate onto CER at La Cresta Heights, the site of the most frequent motorcycle intrusions. Patrol reports also contributed to the decision to improve one gate/fence structure on the SDNWR.**

Reporting Period	Meeting Date(s)	Topics	# Attending Meeting	Meeting Hours	Meeting Attendance hours	# Joining	# Incidents Reported by Patrol Members	Volunteer Hours for Incident Reporting	Total Patrol Volunteer Hours
July 2014	7/26/2014	Insects of CER	9	2	18	2	16	16	34
Q4	4/12/2014, 5/10/2014	The Geology of Crestridge, The Sweetwater Interpretive Loop	18	4	36	4	6	6	42
Q3	1/23/2014, 3/4/2014	Gold-spotted Oak Borer at CER, SDNWR Patrol Orientation	16	4	32	7	21	21	53
Q2	10/12/2013	Animal Tracks and Sign	14	3	42	2	11	11	53
Q1	na	na	0	0	0	0	0	0	0
Total			57	13	128	16*	54	54	182

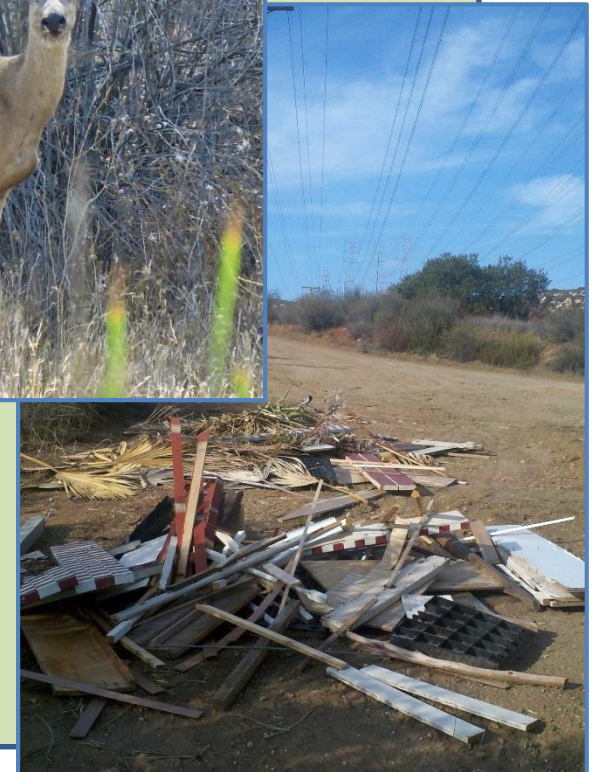
\*one person has joined the SDNWR patrol and has received written orientation information but has not yet been able to attend a meeting



# Conservation is...



Observation  
And  
Vigilance



## Task 6: Administration

Task	Task Name	Description	Quantified Results for Project	Deliverables
6	Administrative	Conduct administrative tasks to maintain and document the project	Create and maintain paper forms and records Create and maintain electronic forms and records Prepare quarterly and final reports Maintain financial records	Quarterly and final reports, quarterly invoices.

During the project, EDI staff has:

- Created and maintained event sign-in sheets
- Coordinated completion of and maintained agency-specific volunteer registration forms
- Added new contacts to electronic contact list
- Maintained event records capturing work descriptions and time contributions of one-time and weekly volunteers
- Prepared quarterly progress reports, invoices, and back-up reports

During the project, EDI volunteers have:

- Assisted with financial data entry and processing

Reporting Period	Administrative-related Volunteer Assistance	Administrative-related Volunteer Hours
July 2014	Financial data entry and processing	10
Q4	Financial data entry and processing	20
Q3	Financial data entry and processing	20
Q2	Financial data entry and processing	24
Q1	na	na
Total		74

## Challenges, Adaptive Strategies, and Lessons Learned

### 1) Habitat Conditions Affected the Number of One-time Habitat Events Conducted

- Challenge:** Challenging habitat conditions influenced agency partners to cancel multiple and schedule fewer habitat restoration events (Task 2; One-time Events). The lack of rain/very dry conditions resulted in cancellation by land managers of the following events: acorn/seed collection (2), planting (2), and vernal pool management (1). Weeding (1-2) and trail maintenance events (2-3) were not appropriate due to these habitat conditions. Consequently, the number of volunteer work days was less than expected, 11 vs. 16. This also resulted in less volunteer time match value than anticipated. (Total projected match: \$87,985, Actual match: \$75,075.47, Match short-fall: \$12,309.53) One-time events aimed to include 150 participants. Although 11 vs. 16 events were conducted, 133 volunteers (87% of the target number) participated, nearly reaching the goal despite the decreased number of opportunities.
- Adaptive Strategy:** In response, EDI prioritized events focused on focal, covered, threatened or endangered species or habitats, conducting 8 vs. 6, exceeding the project goal by 33%. EDI also worked with partner agencies to increase the number of interpretive events (Task 1) conducted to compensate for habitat



projects that were constrained by habitat conditions. The scope of work for the number of participants for interpretive and one-time habitat events combined was 250. Within these 2 activities, 381 participants were involved, exceeding the combined scope by 52%.

- c. Lessons Learned: It is apparent that short and long-term weather and climate patterns can have a greater impact on the type of community involvement and conservation stewardship activities than was anticipated. Should similar opportunities arise in the future, EDI will build additional flexibility into the types of events projected, and project a range of the number of events to be conducted to increase our ability to adapt to unexpected conditions without failing to meet any of the objectives of the project. Since interpretive events do not generate volunteer time match value, proposed match from volunteer time contributions would be more conservative.
- 2) **Student Program Site Participation Numbers Did Not Align Completely with Scope**
    - a. Challenge: Working to schedule students from multiple schools and districts to visit multiple field sites depended on certain factors over which EDI was not in complete control. Schedules for buses are challenging and must be arranged in the fall of the school year. Unexpected spring rains twice cancelled trips planned for SDNWR. By the time the school district could open up new dates for buses, it was late in the school year and one of four classes originally scheduled to visit the refuge (on a day that was still workable for refuge staff after 2 cancellations) could no longer participate and no replacement could be recruited on short notice. EDI had scoped for 120 students to visit. With the 3 remaining classes, 113 actually visited this field site.
    - b. Adaptive Strategy: EDI worked diligently through the project period to serve as many students as possible. Although the project fell short of the goal for the SDNWR by 7 students (6%), the total number of students served at the 2 new sites (RJER and SDNWR) combined was 293, 53 (21%) above the target of 250. The total number of students served by the project was 1,457 vs. the 1,000 target, exceeding the goal by 45%.
    - c. Lessons Learned: To avoid even the minor deviation from scope described above, in the future, EDI would identify the total number of students to be served and the total number of field sites to be included without specifying how many students would participate at each site.

## **Summary of Accomplishments**

### **Areas in which EDI was challenged and fell short of our goals for this project:**

- Number of one-time volunteer habitat events and corresponding volunteer match amount
- Number of participants in one-time volunteer habitat events
- Number of students to attend field visits at the SDNWR

### **Incomplete work:**

- Cost effectiveness of photo monitoring: Based on direction of partners at CBI, photo monitoring was completed in May and June of 2014. Habitat conditions and work of subcontractors at the sites determined that the photo monitoring take place during this time period and not sooner. During July, EDI staff processed photos, and prepared photos and related data for transmittal back to CBI. All time and cost data was provided to SDMMP on July 31, 2014 and analysis will be forwarded as an addendum to this report as soon as completed.

### **Areas in which EDI met project goals are:**

- Number of newsletters published and distributed
- EDI website maintained with conservation event information
- Number of training meetings for volunteer patrols
- Number of new volunteer patrols established
- Number of members joining SDNWR volunteer patrol
- Maintain log of patrol-reported incidents

**Areas in which EDI exceeded project goals are:**

- Number of interpretive events
- Number of participants in interpretive events
- Number of interpretive events focused on covered/sensitive species or habitats
- Number of one-time habitat events focused on covered/sensitive species or habitats
- Number of meetings of weekly work crews
- Number of meetings of weekly work crews focused on covered/sensitive species or habitats
- Number of students participating in science service-learning program
- Number of students participating in science service-learning program at RJER
- Number of members joining the Crest volunteer patrol

**Non-scoped accomplishments**

- 617 hours of participation in interpretive events
- 728.5 contributed by students to habitat restoration
- 643.5 contributed by students to covered/sensitive species or habitats
- 1<sup>st</sup> grade classes from Rolando Elementary in the La Mesa-Spring Valley district made seed balls with local wildflower seeds. They packaged and distributed the seed balls to family and neighbors. Students shared what they learned about native and non-native plants and their effects on the local habitats.
- 4<sup>th</sup> grade students from Blossom Valley Elementary in the Cajon Valley district completed individual posters with eco-friendly messages related to their experience at Crestridge Ecological Reserve. Posters from this project will be selected to be made into metal trail (directional) signs that will be used on the reserve.
- 5<sup>th</sup> grade students from College Prep Middle School in the La Mesa-Spring Valley district listened to a presentation on local pollinators and their purpose in the habitat. Students then did their own research and created posters with positive messages and facts to help the community learn to “Protect Our Pollinators”. These will be used as interpretive posters at trailhead kiosks for several EDI partner agencies.
- 3,239 electronic newsletters distributed
- 50 email blast about habitat/interpretive events
- 179 Facebook postings about habitat/interpretive events and conservation facts, information, and links to other conservation information
- 128 hours of training meeting attendance by volunteer patrol members
- 54 incidents reported by volunteer patrol members and forwarded to respective land managers
- 3 conserved lands gates installed or improved based on volunteer patrol-reported incidents
- 24 hours of volunteer photo monitoring, all for covered/sensitive species or habitats



## **Value of Volunteer Contributions**

EDI uses \$24.18/hour as the value of volunteer time as established in 2012 by The Independent Sector, a nonpartisan coalition that collectively represent tens of thousands of organizations and individuals locally, nationally, and globally to advance the common good by leading, strengthening, and mobilizing the nonprofit and philanthropic community. (The rate for California has since increase to \$26.54/hour.) The value of all volunteer effort for this project is captured in the following table:

<b>Type of Event/Activity</b>	<b>Total Project Hours</b>	<b>Value of Volunteer Hours</b>
Interpretive Events	30	\$725.40
One-time Volunteer Workday Events	430	\$10,397.40
Weekly Volunteer Work	703	\$16,998.54
Photo Monitoring	24	\$580.32
Student Field Visits (restoration assistance)	728.5	\$17,615.13
Volunteer Patrols	182	\$4,400.76
Administrative Support	74	\$1,789.32
<b>Total</b>	<b>2,171.5</b>	<b>\$52,506.87</b>

---

### **Glossary of Acronyms:**

BLM: Bureau of Land Management

CBI: Conservation Biology Institute

CDFW: California Department of Fish and Wildlife

CER: Crestridge Ecological Reserve

EHC: Endangered Habitats Conservancy

FWS or USFWS: United States Fish and Wildlife Service

RJER: Rancho Jamul Ecological Reserve

SDMMP: San Diego Management and Monitoring Project

SDNWR or San Diego NWR: San Diego National Wildlife Refuge

TNC: The Nature Conservancy