

Amphibian IBI and Hydrological Impact Score

The data described in this talk represents almost 2 decades of field work by our team in southern California and by many partners. So many of these people that were here at the beginning of this work are still participating....



July 2002

Robert Fisher

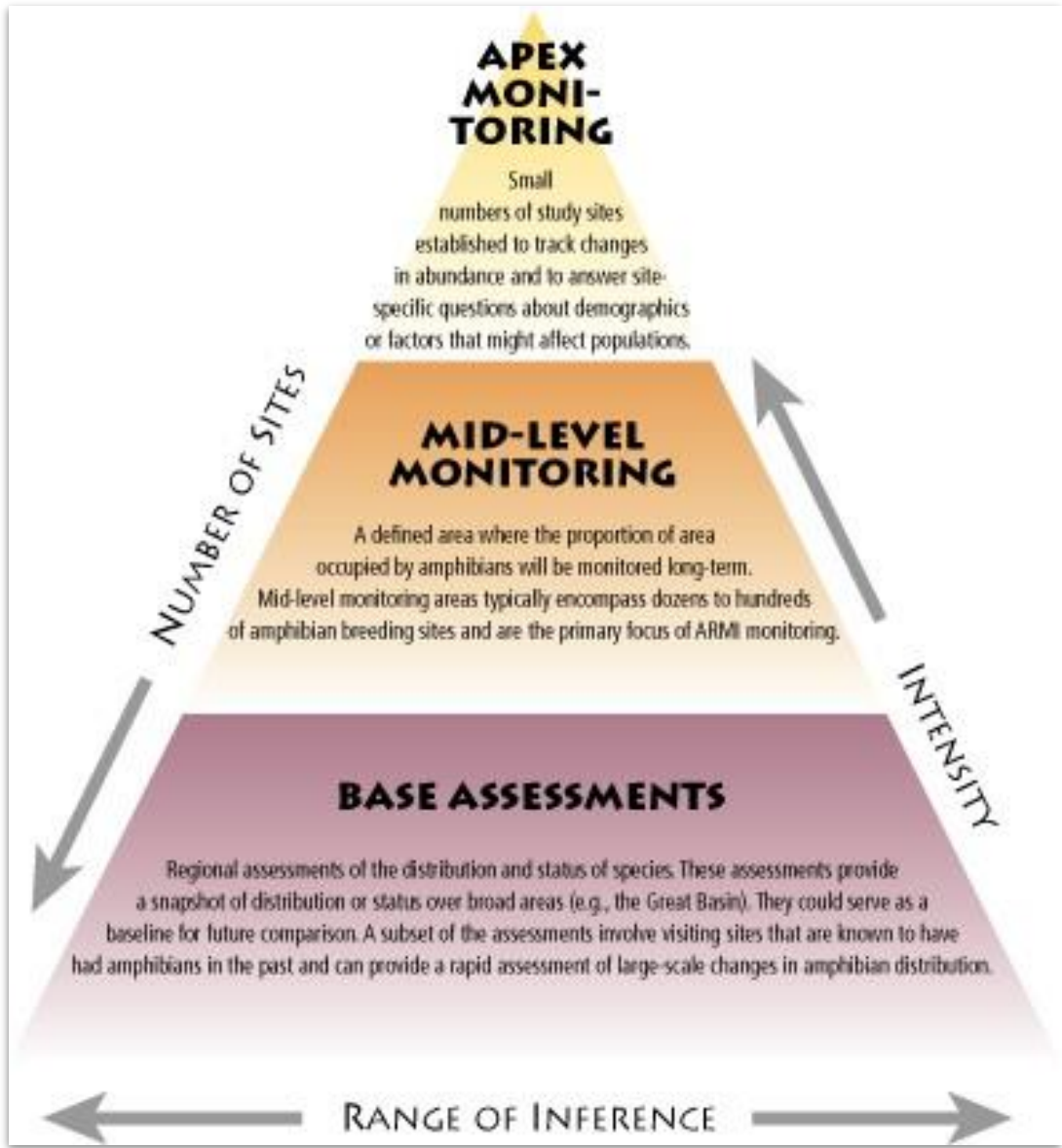
Supervisory Research Biologist

Western Ecological Research Center



January 2017

Attempting to Synthesize 20 years of data



Amphibians Assessed Across Southern California

Listed species



Sensitive and
Pre-listed species



Non-listed species



Native Aquatic Reptiles and Fish



Invasive Aquatic Species



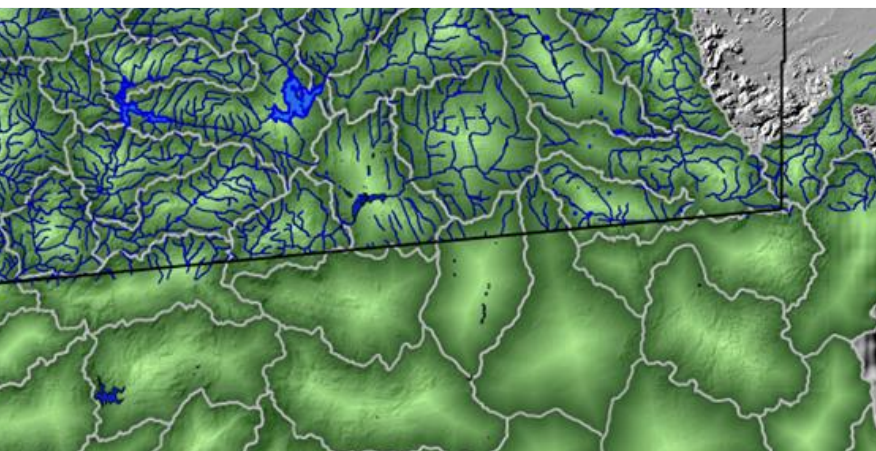
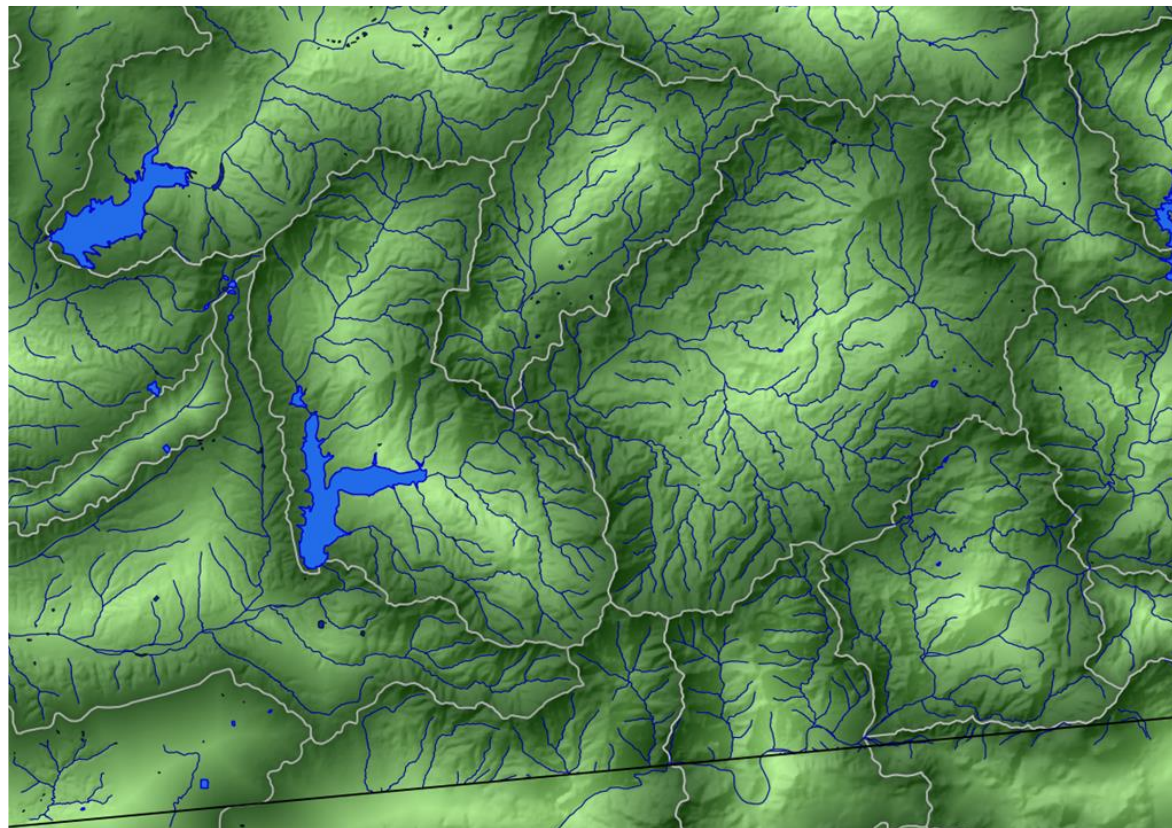
Included Species and Observations

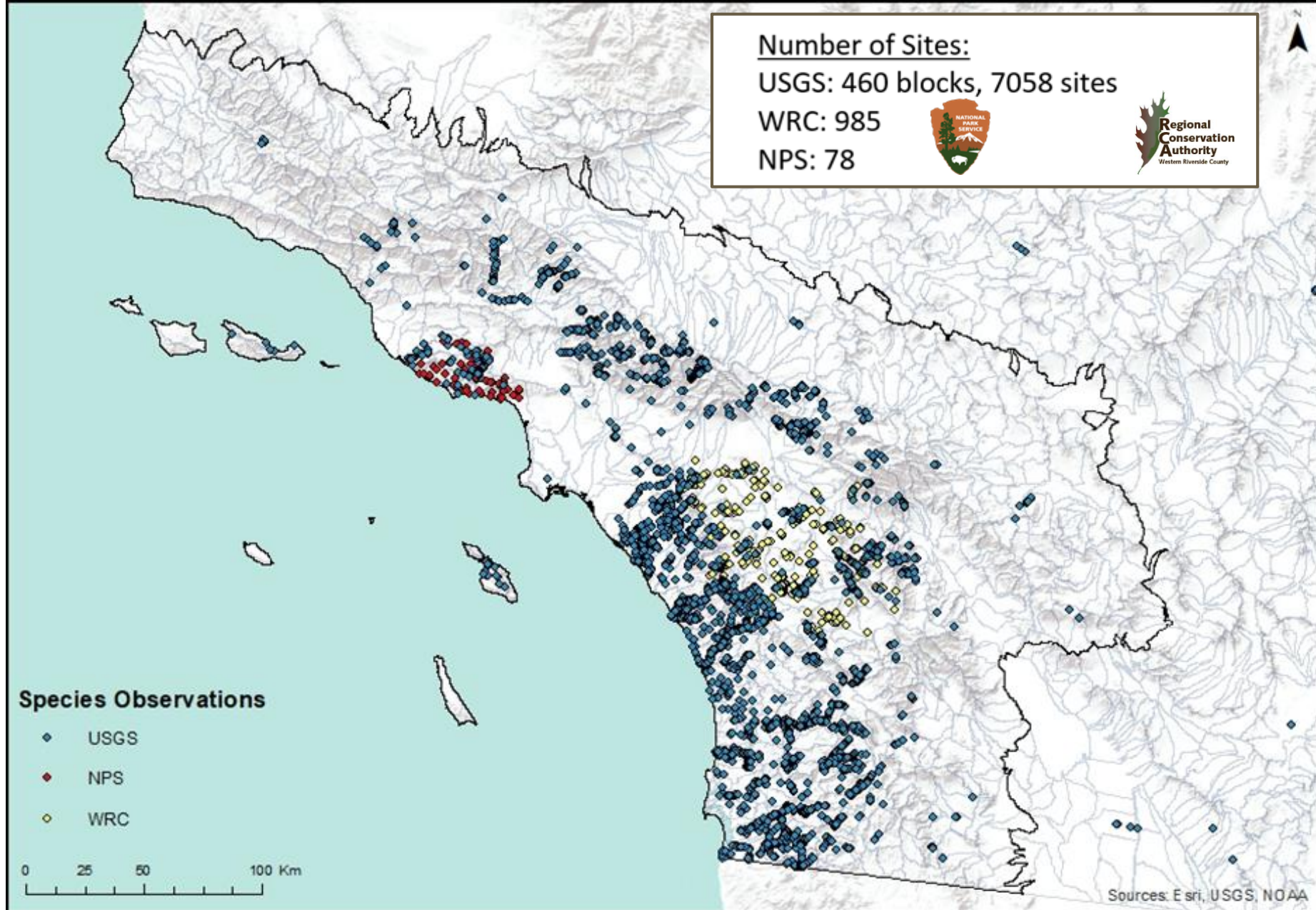
Total Observations:

338,067

Taxon	Species	Total Natives	Total <u>Invasives</u>
Frog	California Red-Legged Frog	9,603	
	Mountain Yellow-legged Frog	47,755	
	Arroyo Toad	37,330	
	Western Spadefoot	8,066	
	Western and Red-spotted Toads	71,346	
	Pacific Chorus Frog	29,450	
	California Chorus Frog	10,209	
	<i>Bullfrog</i>		19,249
	<i>African Clawed Frog</i>		15,277
Salamander	California Newt	2,853	
Turtle	Western Pond Turtle	5,302	
	<i>Red Eared Slider</i>		2,237
	<i>Other Invasive Turtles (10 sp)</i>		269
Snake	Two Stiped Garter Snake	1,608	
	South Coast Garter Snake	7	
	Coast Mountain Kingsnake	39	
	<i>Southern Water Snake</i>		12
Fish	Arroyo Chub	3,589	
	<u>Threespine Stickleback</u>	2,497	
	Santa Ana Sucker	1,315	
	Rainbow Trout - Southern Steelhead	9,169	
	Santa Ana Speckled Dace	447	
	<i>Mosquito Fish</i>		35,430
	<i>Other Invasive Fish (26 sp)</i>		10,890
Invertebrate	<i>Asiatic Clam</i>		1,199
	<i>Louisiana Swamp Crayfish</i>		12,875
Megafauna	<i>Beaver</i>		44
		240,585	97,482

Used HUC 12

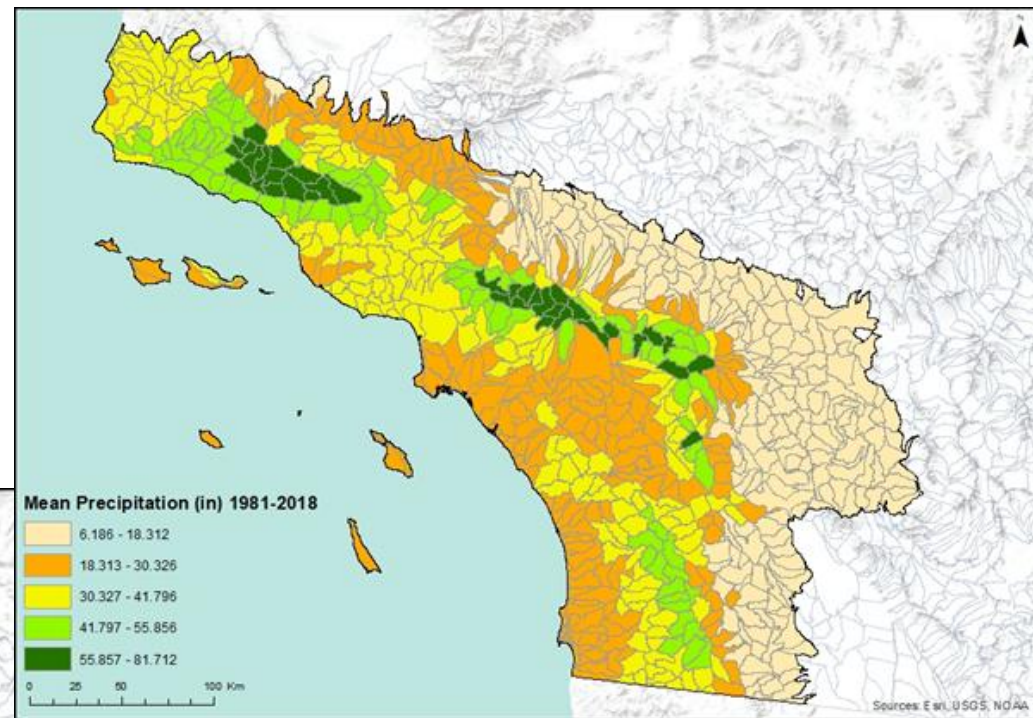




Drivers in the landscape

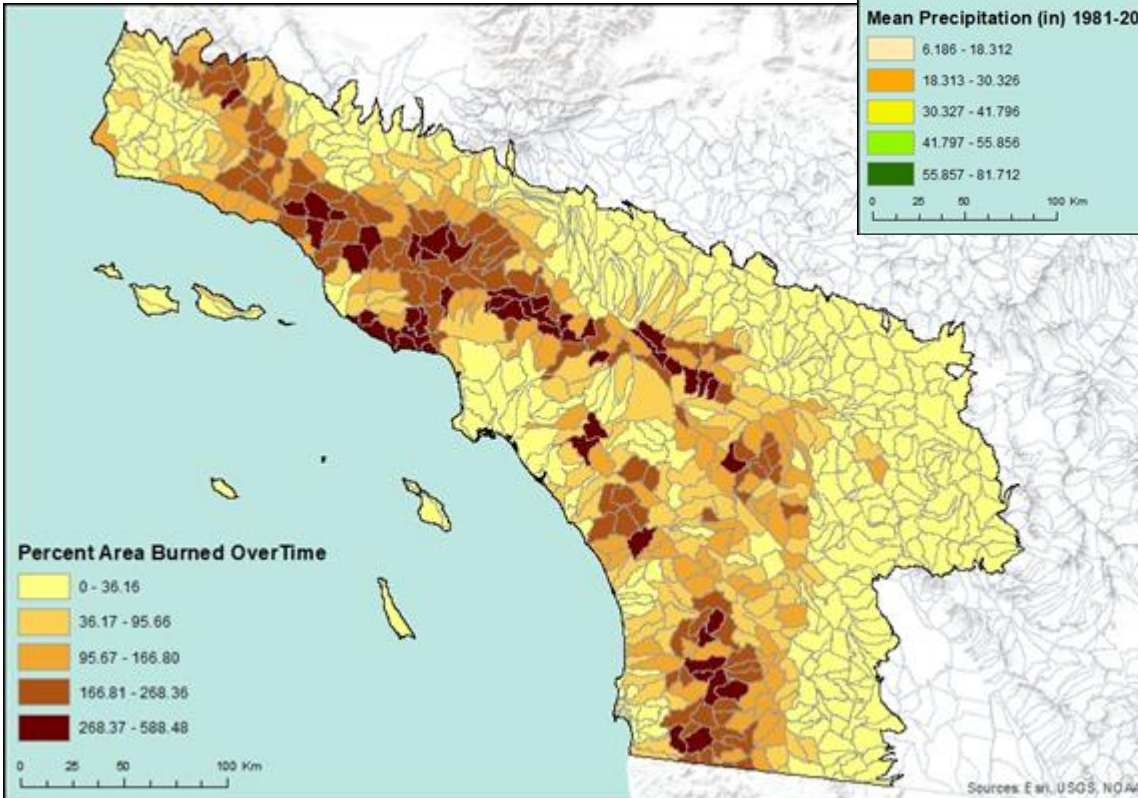
Historically natural drivers such as rainfall, temperature, geology

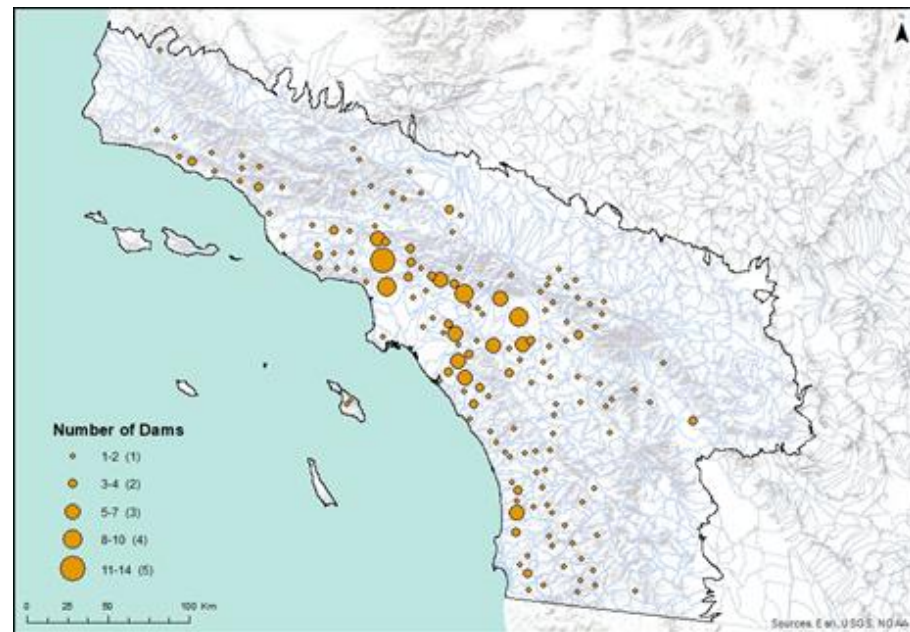
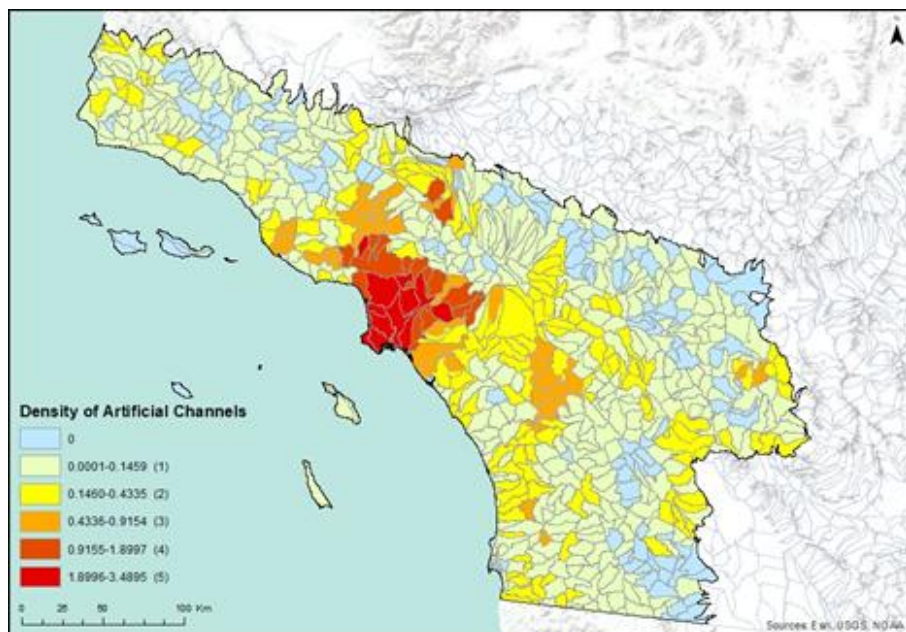
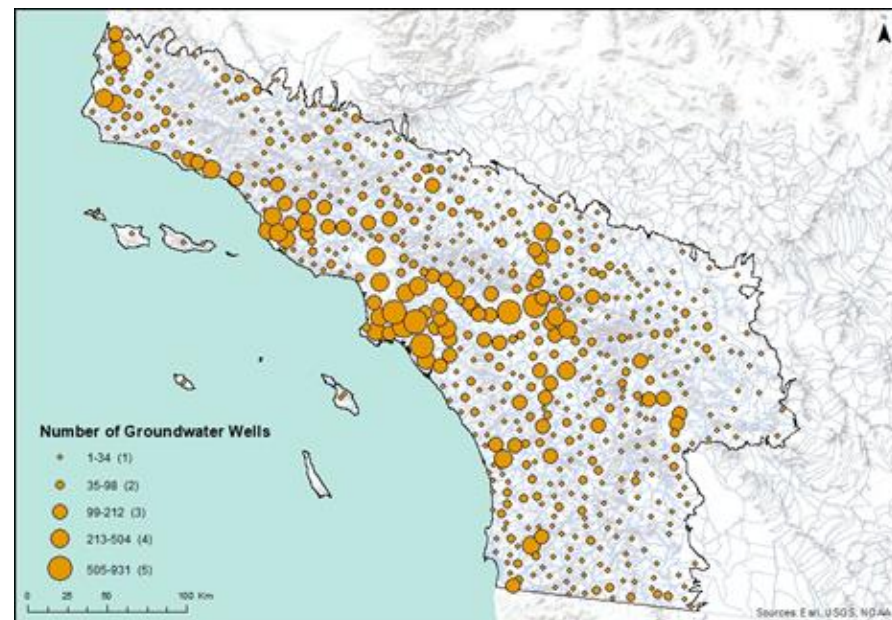
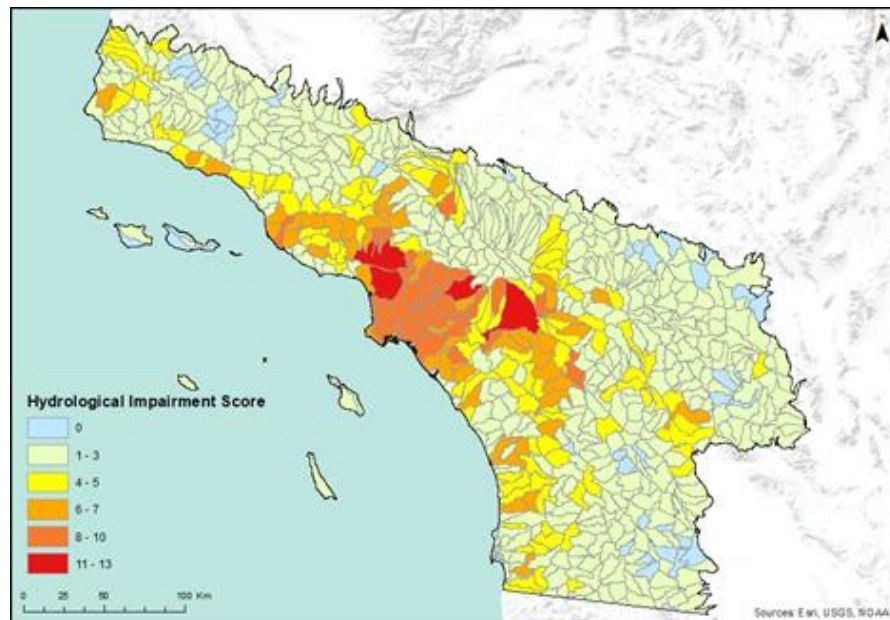
Impact where species occurred naturally

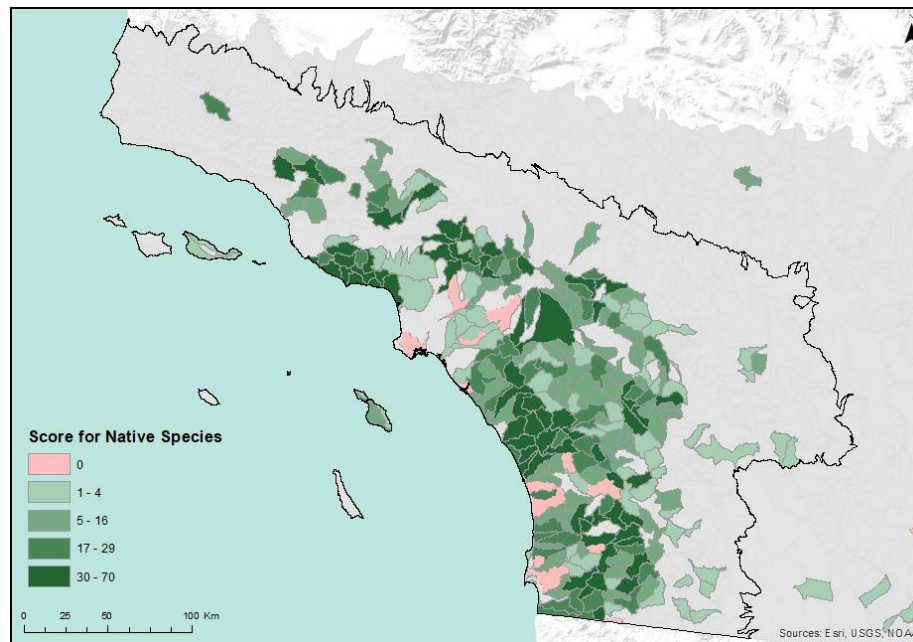
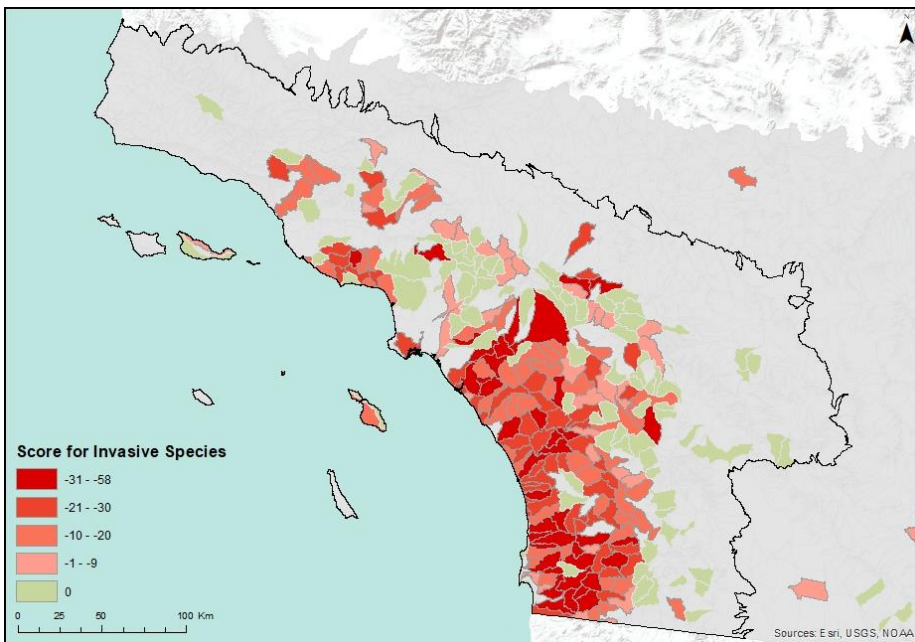
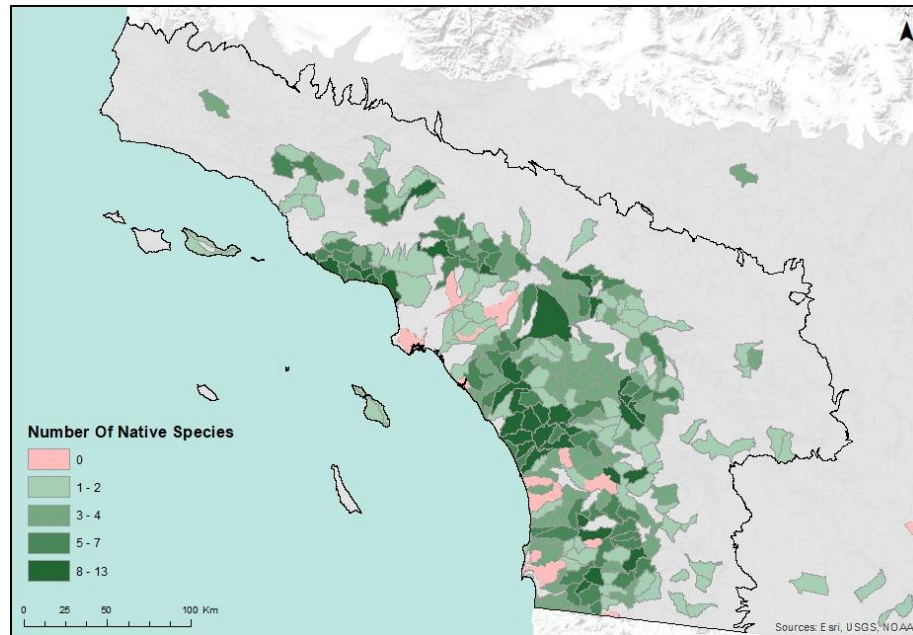
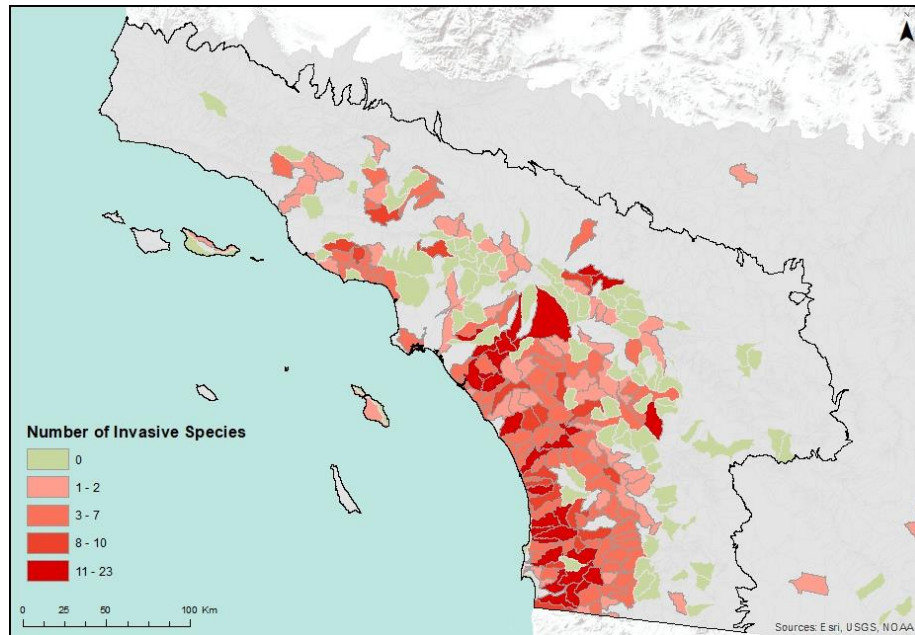


Climate modified drivers such as wildfire, drought, increasing temperatures

Impact where species can now occur







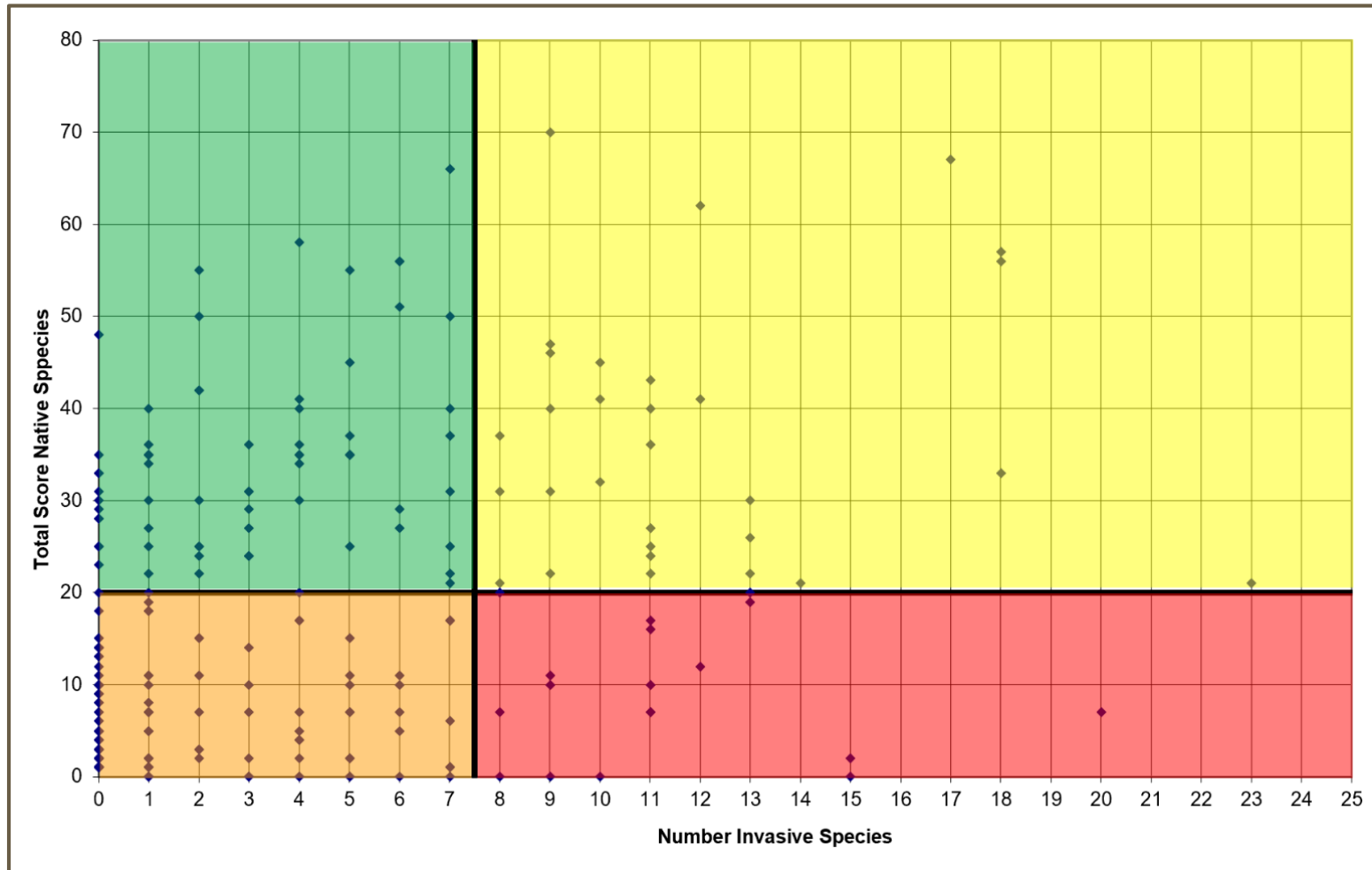
Where to apply what management....

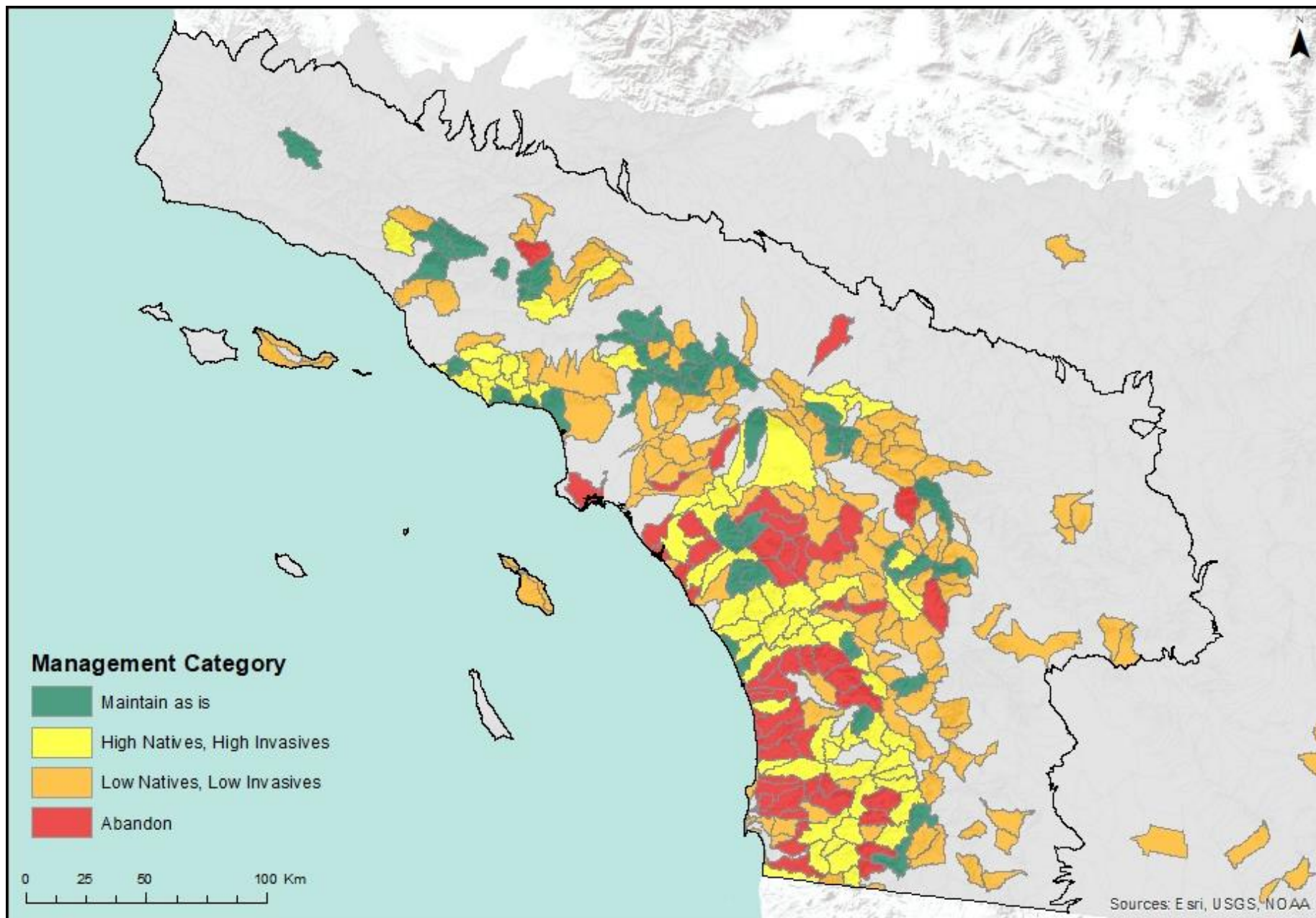
Green - Maintain as is...

Yellow - good natives, but impaired

Orange - low impairment but low natives

Red - Abandon!!!





Where to apply what management....