

San Dieguito River / Fairbanks Ranch – Rancho Santa Fe Invasive Plant Removal and Stream Enhancement Project



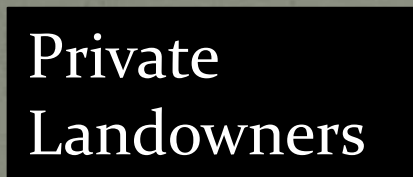
San Dieguito River Valley Conservancy
Jonathan Appelbaum, Conservation Manager
November 14, 2018

San Dieguito River Valley Conservancy

- Established 1986
- Full-time staff: 3
- Three Pillars:
 - Conservation
 - Education
 - Recreation



Project Funders



Project Partners

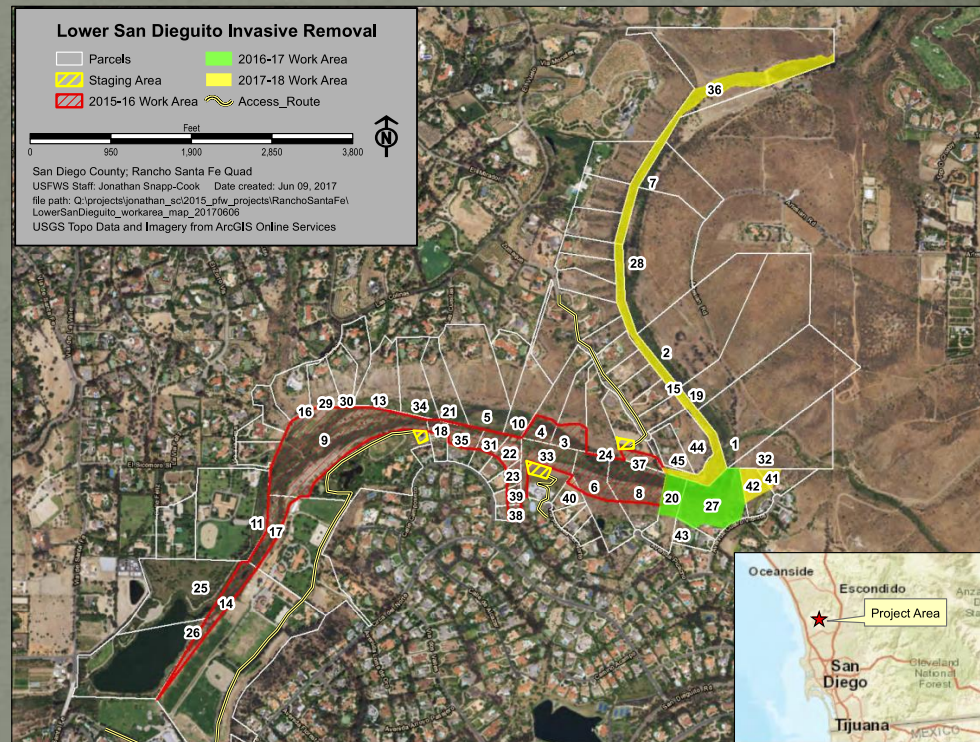


CALIFORNIA
NATIVE PLANT
SOCIETY



Goals and Objectives

- Restoration and Enhancement of 181 acres over 2.5 river miles. Including;
- Remove invasive plant species (Arundo, Pampas grass, palms, Eucalyptus, etc.)
- Reduce fuel levels
- Educate neighboring landowners about environmentally responsible, drought tolerant, and fire resistant landscaping and best management practices for fuel reduction.

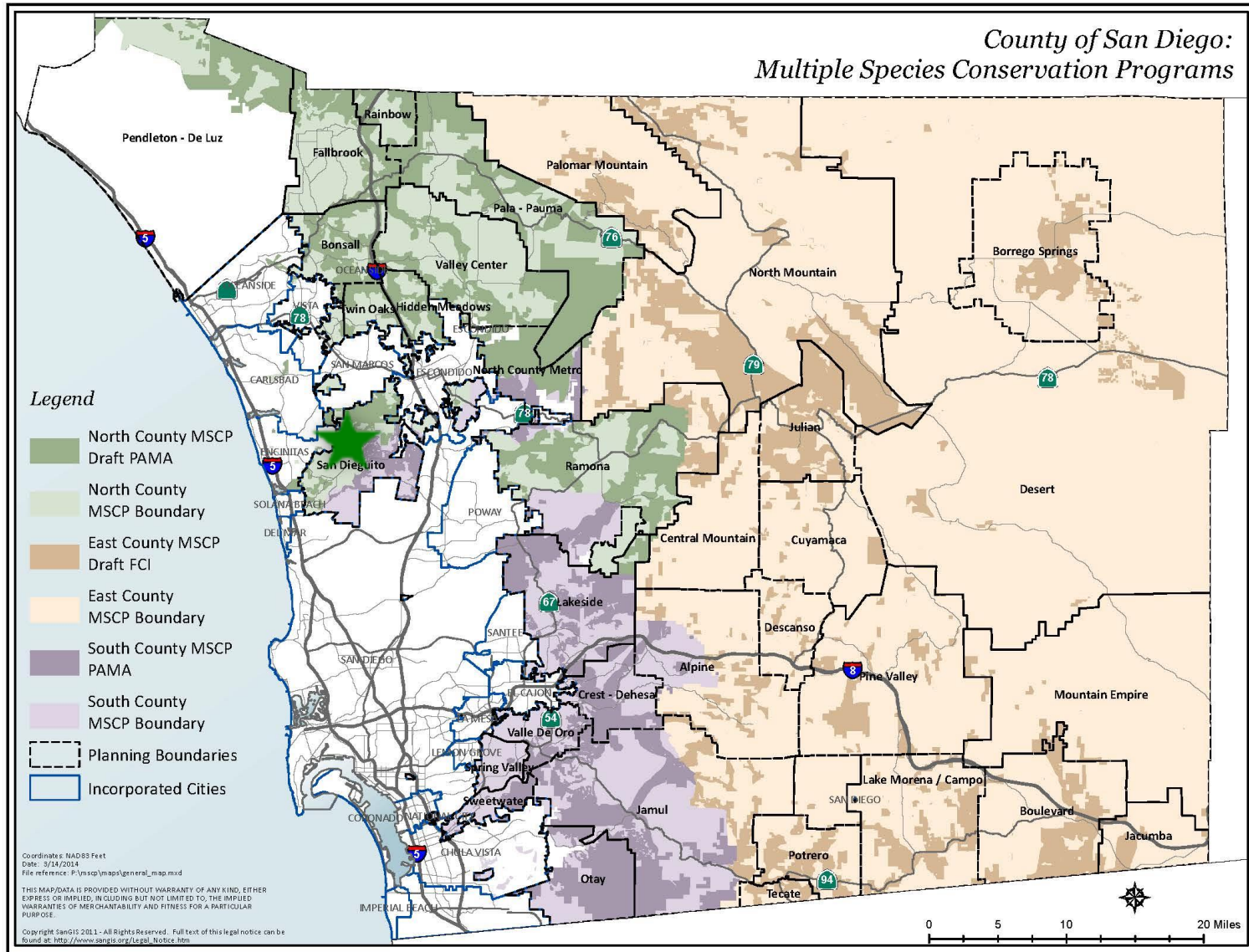


Permits

- Section 1602 LSAA (permit held by San Dieguito River Park Joint Powers Authority [JPA])
- Programmatic permit covers Invasive Species Control Efforts throughout the watershed.
- USFWS Technical Assistance Letter (through Partners for Wildlife Program)

Regional Context

County of San Diego: Multiple Species Conservation Programs



Watershed Context

- Upstream connections to Crosby HMA & Del Dios Gorge County Open Space, Lake Hodges, Lusardi County Parks, etc.
- Downstream receiving waters include San Dieguito Lagoon – CDFW Ecological Reserve, Marine Protected Area (MPA).

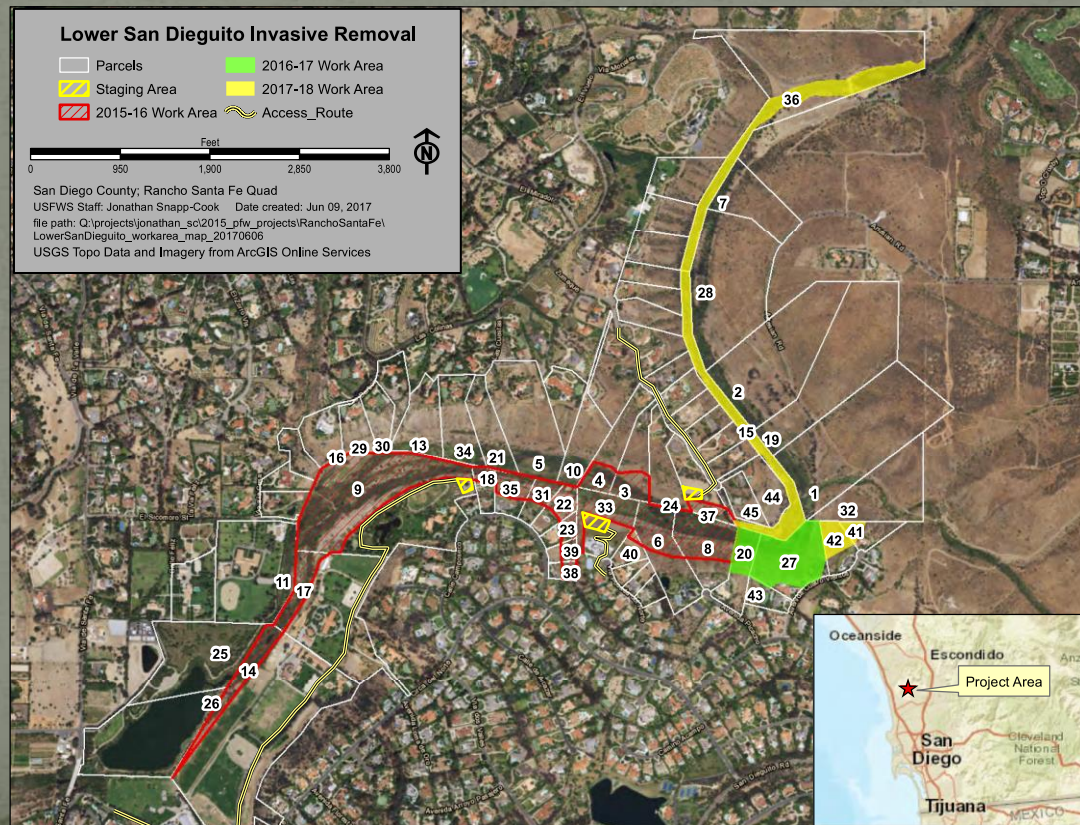


Biodiversity Benefits

- MSCP Covered Species
 - LBV (Crosby HMA, Lake Hodges)
 - CAGN (Lusardi County Park)
 - Cactus wren (Lake Hodges)
 - Quino checkerspot butterfly (host plant present within RSF Arroyo Preserve)
- Other Target Species
 - Southwestern Pond Turtle
 - Southern Steelhead (NOAA/NMFS Core 2 population)

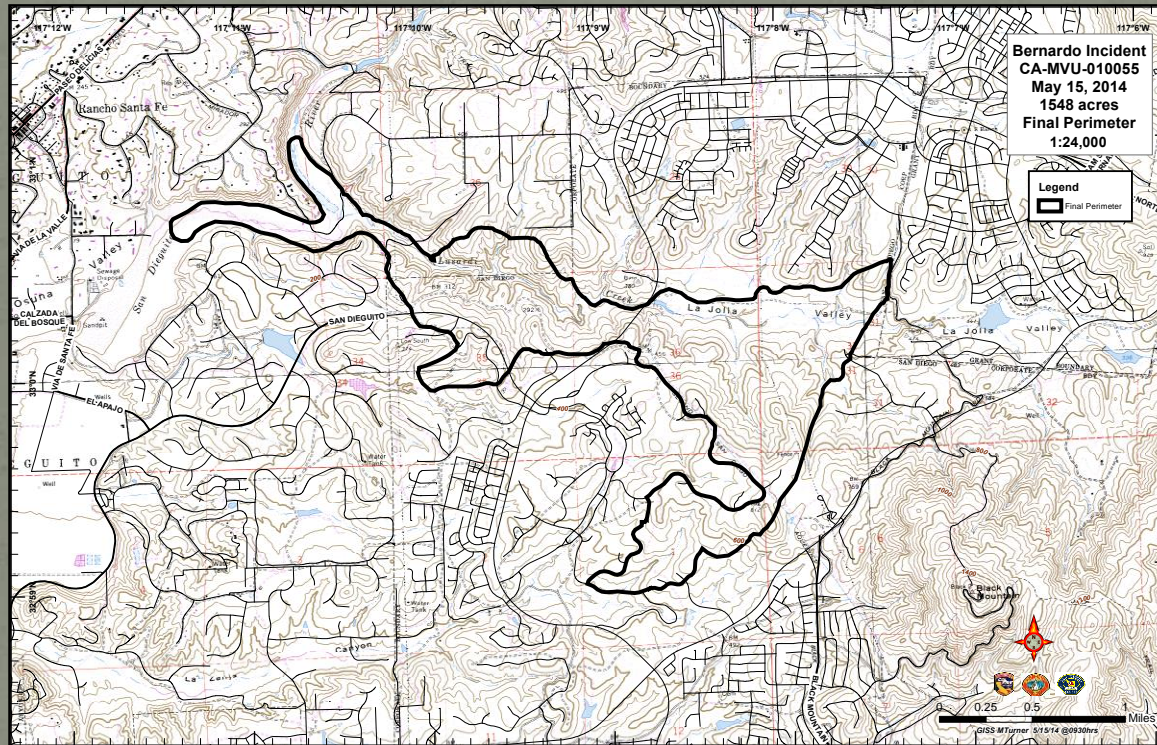
Land Ownership

- 90% Private / 10% Public – Conserved Land
- Relationship to Conserved Lands



Fire History & Context

- Fire History – Witch Creek Fire 2007, Bernardo Fire 2014, Unnamed Fire 1943



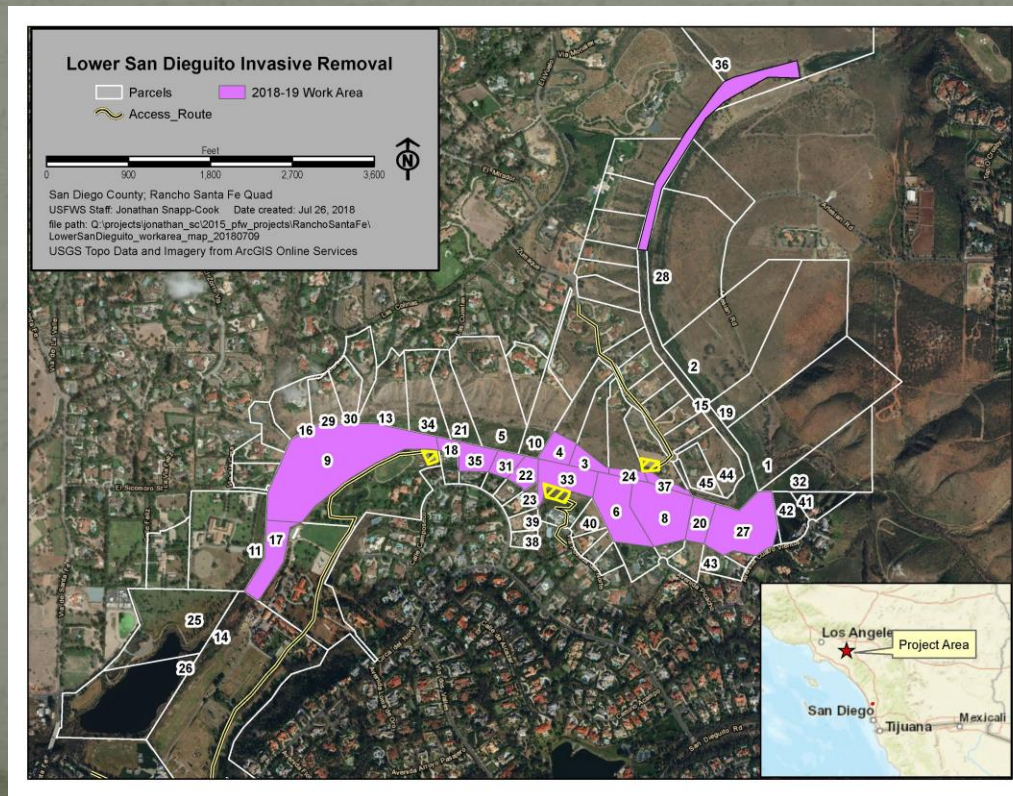
MSP Strategic Plans

- Invasive Plant Strategic Plan (CBI 2014)
- Fire & Connectivity Strategic Plans (in progress)
- Monitoring Strategic Plan (TBD)



Implementation

- Outreach to private landowners for ROE
- Preliminary Implementation Schedule for Phases I-VI
- Recommended for funding under Prop 1 (provisional)



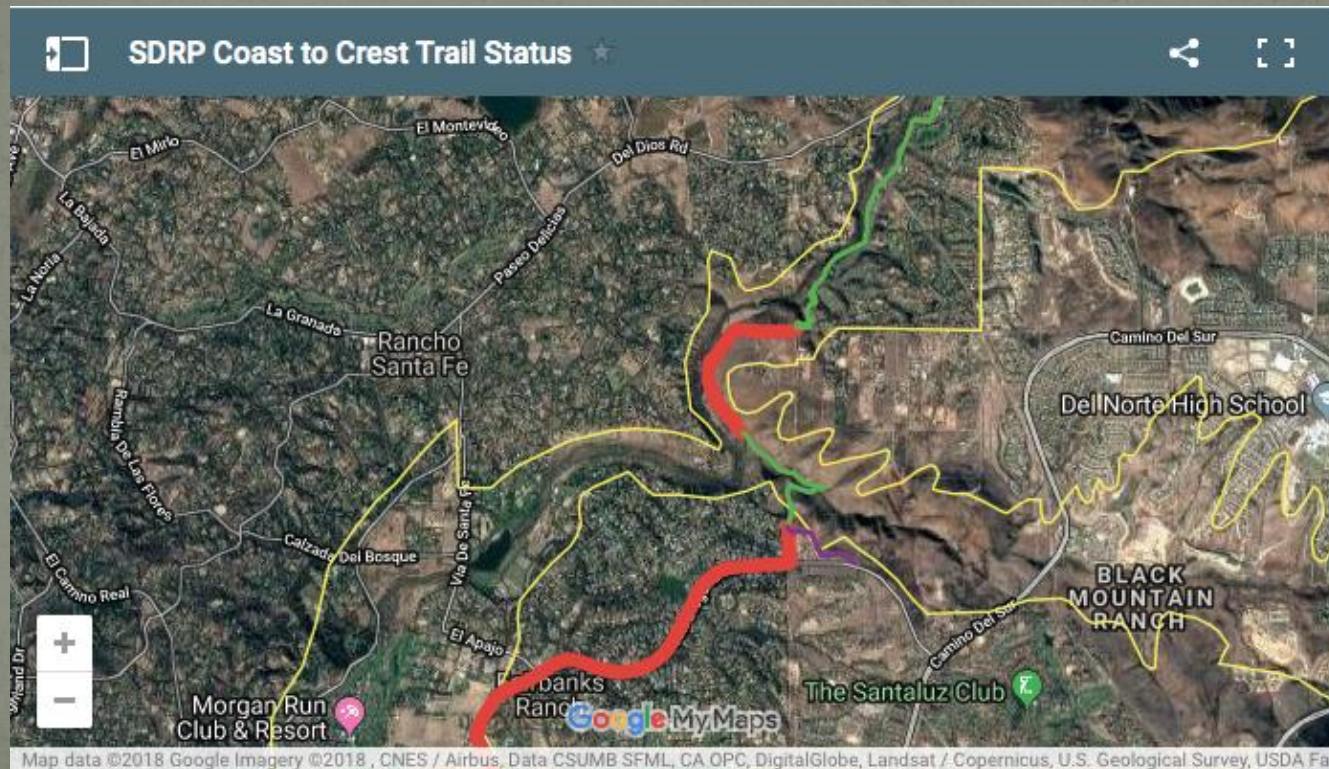
Citizen Science Monitoring

- Avian Surveys – Palomar Audubon Society
- Herp Surveys – NAFHA/SWFA
- Botanical Surveys – Angelique Hermann
- Wildlife Cameras – SDRVC
- “Stacked Cube” Sampling - UCSD Intern Ryan Blaich
- Drone-based Remote Sensing - Airspace Consulting, Inc.



Recreational Resources

- Lusardi County Park
- Coast to Crest Trail



Acknowledgements

- Appreciation to our funders and project partners at:
- USFWS
- USDA NRCS
- Patagonia
- CNPS
- CNPS – San Diego Chapter
- Fairbanks Ranch Association
- Rancho Santa Fe Association
- San Diego Foundation
- San Dieguito River Park JPA
- County of San Diego Department of Parks & Recreation
- Del Dios Habitat Protection League

CONTACT



Jonathan Appelbaum

jonathan@sdrvc.org

www.SDRVC.org

858-755-6956