

**City of San Diego  
Multiple Species Conservation Program**

**Summary of Monitoring Results for  
*Muilla clevelandii***

**May 2003**

## **Introduction**

San Diego goldenstar (*Muilla clevelandii*) is a rare plant species associated with grassland areas. Monitoring for this plant was conducted on May 19, 2003 on Del Mar Mesa (see attached map) by City of San Diego staff Holly Cheong and Keli Balo. Monitoring for this species began in 2001 and has been conducted annually (McMillan Biological Consulting and Conservation Biology Institute, 2001; Wildlife Research Institute, 2002). The methodology and results of the monitoring are detailed below. The goal of the effort was to continue the annual collection of data for long-term monitoring of San Diego goldenstar under the MSCP.

## **Methodology**

Monitoring for this species was conducted in accordance with the Biological Monitoring Plan for the MSCP (Monitoring Plan), dated January 25, 1996. The location of each sampling site were determined by field level surveys and then depicted on aerial photographs. All individuals within the population area were counted.

## **Results**

Surveyors estimated a total of 312 flowering plants. Non-flowering individuals were not observed.

## **Recommendations**

Additional site surveys will need to be completed for Marron Valley and Otay Lakes in 2004. The Mission Trails (MTRP) population was surveyed in 2003 by Scott McMillan. He only observed six individuals within the population. In 2001, he observed twelve individuals. In 2002, no San Diego goldenstar was detected. The MTRP co-occurs with common goldenstar (*Bloomeria crocea*) which only can be distinguished from San Diego goldenstar by examining the stamens of the flowers. Given the small size of the MTRP and the amount of effort it takes to distinguish San Diego goldenstar from common goldenstar, it is recommended that this population no longer be included in the survey effort.

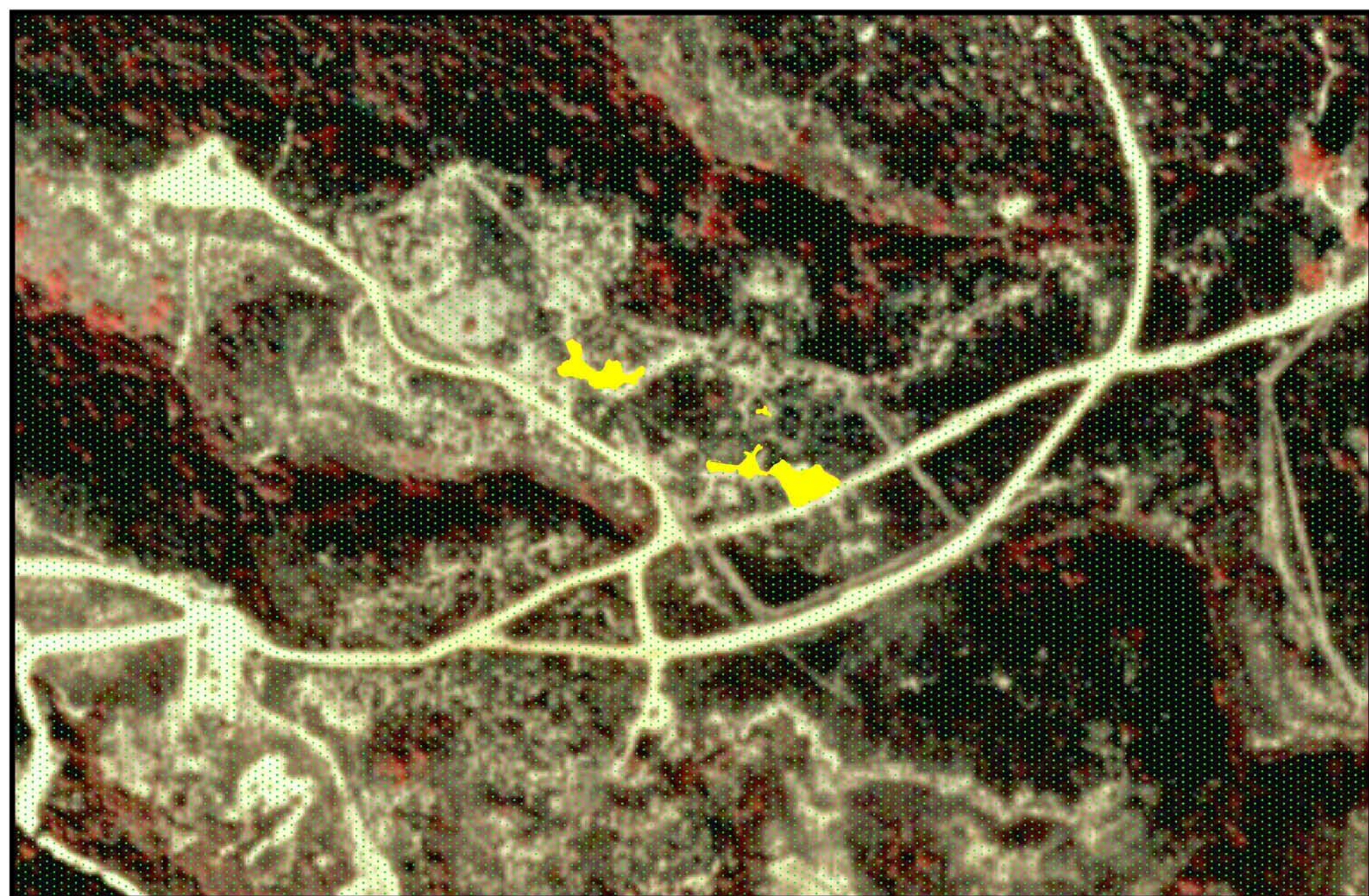
## **References**

McMillan Biological Consulting and Conservation Biology Institute. 2001 MSCP Rare Plant Survey and Monitoring Report. 2001.

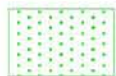
Ogden Environmental. Biological Monitoring Plan for the Multiple Species Conservation Program. 1996.

Wildlife Research Institute. 2002 MSCP Rare Plant Survey and Monitoring Report. 2002.





Population Area



MHPA

# Del Mar Mesa

*Muilla clevelandii*

Survey Date: 5/19/03



Source:

H. Cheong, K. Balo