

**City of San Diego
Multiple Species Conservation Program**

**Summary of Monitoring Results for
*Deinandra conjugens***

June 2003

Introduction

Otay tarplant (*Deinandra conjugens*) is an endangered plant species found only in the Otay Mesa area. This plant species is considered a narrow endemic species under the Multiple Species Conservation Program (MSCP). Monitoring for this plant was conducted on June 2, 2003 within City-owned land in the Proctor Valley area (see attached map) by City of San Diego staff Holly Cheong, Melanie Johnson, Keli Balo, and Chad Kane. This is the first year for monitoring of this plant species at this location. However, results from extensive surveys conducted by the U.S. Fish and Wildlife Service (USFWS) on surrounding refuge lands are expected to be available shortly. The methodology and results of the monitoring are detailed below. The goal of the effort was to continue the annual collection of data for long-term monitoring of Otay tarplant under the MSCP.

Methodology

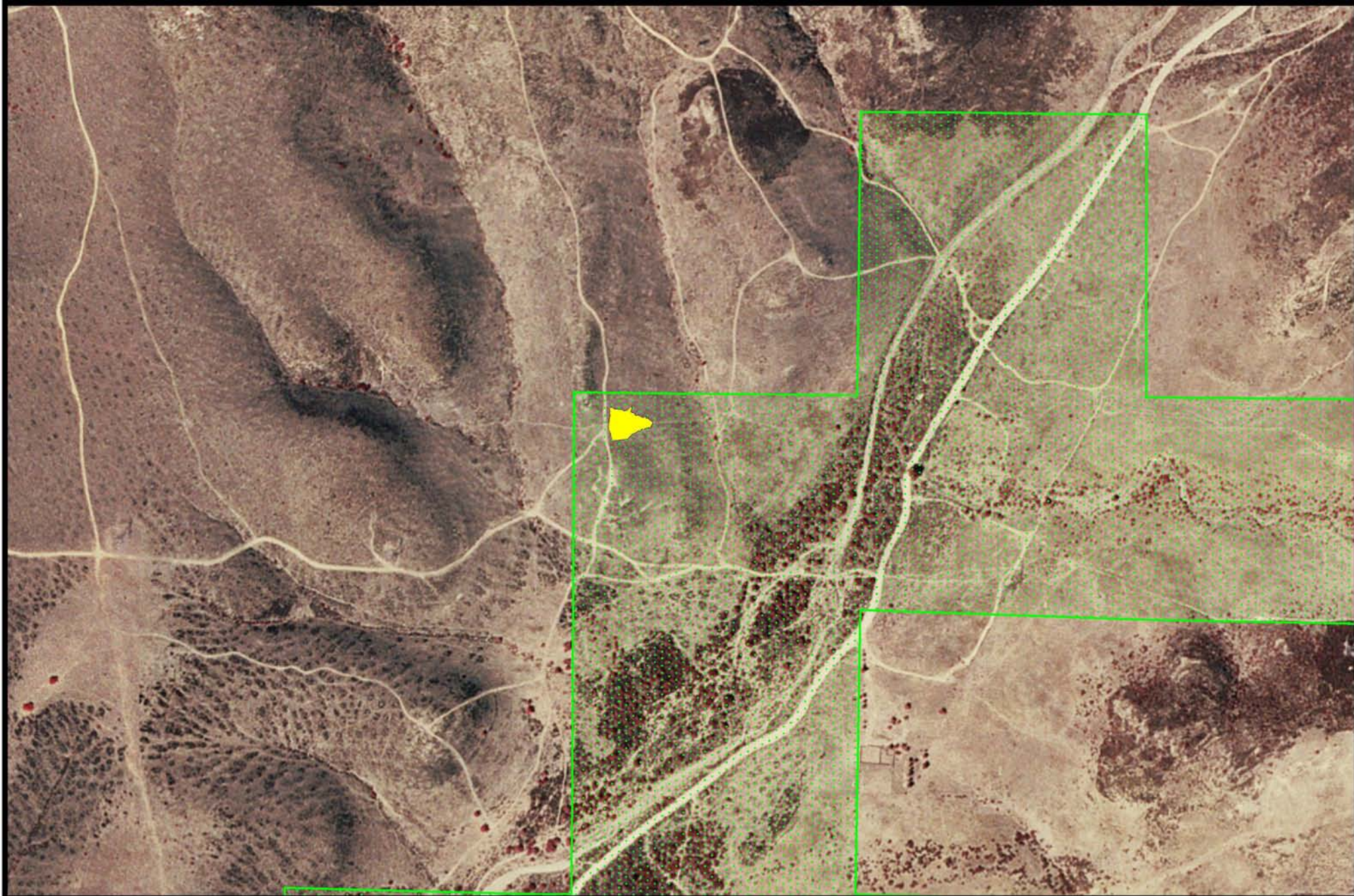
Monitoring for this species was conducted in accordance with the Biological Monitoring Plan for the MSCP (Monitoring Plan), dated January 25, 1996. The location of each sampling site was determined by field level surveys and then depicted on aerial photographs. Three transects were randomly allocated with varying lengths throughout the population. Plants were counted within 1 meter on either side of the transect for a 2 meter wide belt (belt transect method).

Results

Surveyors estimated a total of 45,737 flowering plants. Non-flowering individuals were not identifiable since this species co-occurs with common tarplant (*Hemizonia fasciculata*) which is indistinguishable from Otay tarplant without flowers. It is assumed that all individuals were flowering at the time of survey.

Recommendations

Surveys should be continued annually at the Proctor Valley location. Off-road vehicle (ORV) use is a problem at this location and continued monitoring will help to assess the impacts ORV activity is having on the Otay tarplant in Proctor Valley. These surveys will also help augment the annual surveys being conducted by the USFWS.



Population Area



MHPA

Proctor Valley

Deinandra conjugens

Survey Date: 6/2/03



Source: C. Kane, K. Balo,
M. Johnson, H. Cheong