

2014 San Diego County Linkages Evaluation

Introduction:

- Connectivity Monitoring Strategic Plan identified 16 linkages
- Reviewed each linkage for likelihood of wildlife movement based on available structures and potential barriers

Connectivity Monitoring Strategic Plan for the San Diego Preserve System

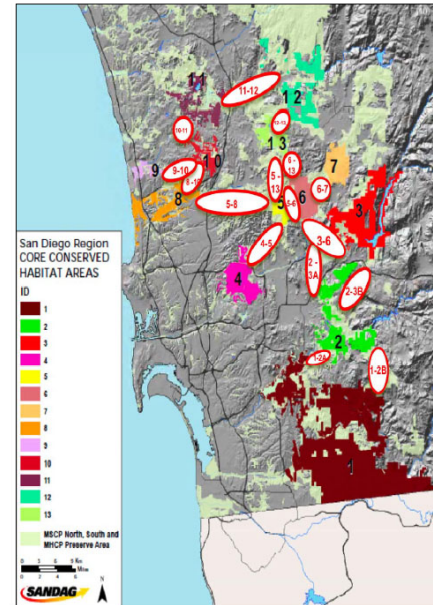


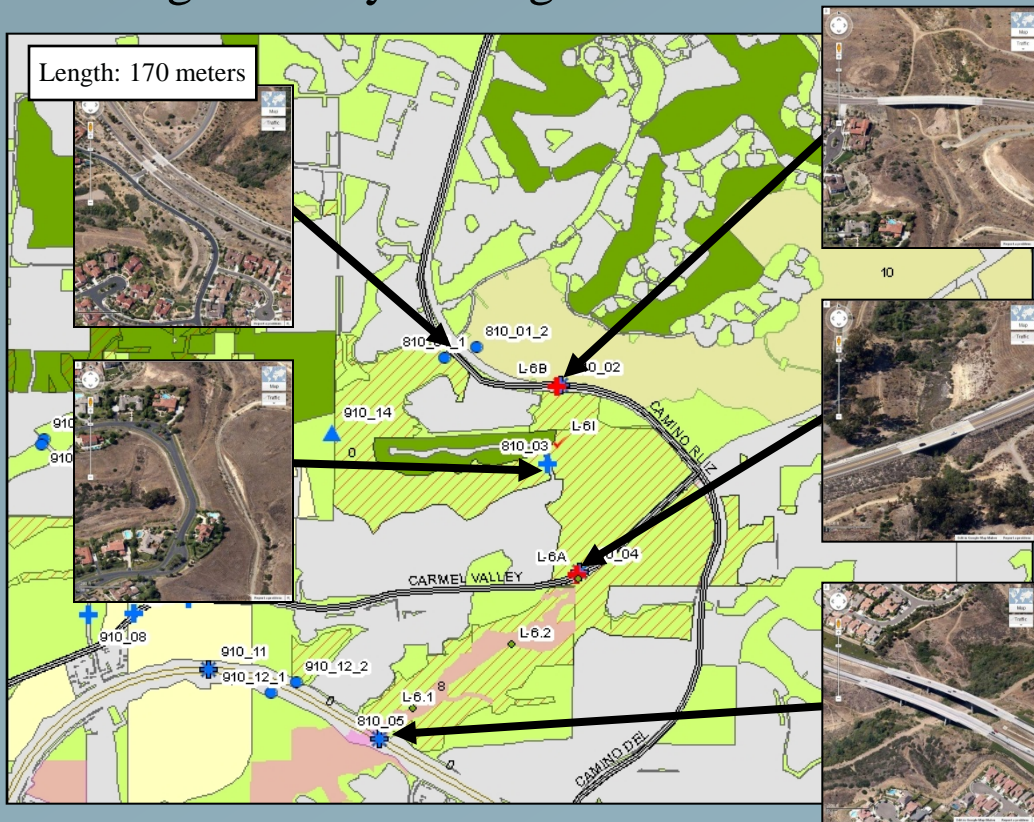
Figure 2. MSCP Linkages Connecting Conserved Core Areas.

January 11, 2011

2014 San Diego County Linkages Evaluation

Methods

- Conserved Lands Database
- Ogden 1996 & CBI 2003 points
- Land use data
- Imagery: ArcMap, Google Earth, Bing Maps
- Identify potential structures and barriers



2014 San Diego County Linkages Evaluation

Results

• Non-functional

- 1 – 2A
- 2 – 3A
- 2 – 3B
- 5 – 6
- 5 – 8
- 5 – 13 *
- 6 – 13
- 9 – 10**



• Functional

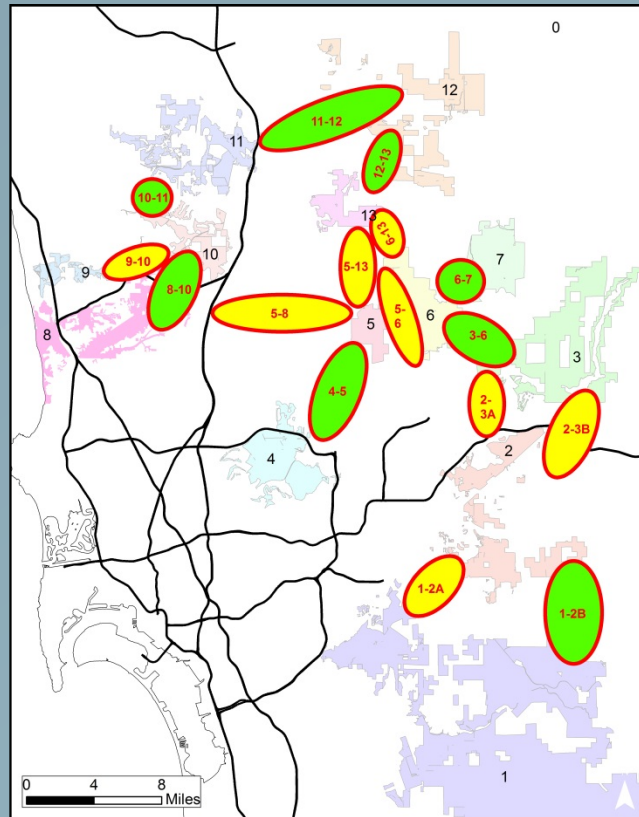
- 1 – 2B
- 3 – 6
- 4 – 5
- 6 – 7
- 8 – 10
- 10 – 11
- 11 – 12***
- 12 – 13



* - Poway Road needs to be evaluated

** - may not be connected through conserved lands
but along San Dieguito River

*** - may be dependent on reservoir levels



2014 San Diego County Linkages Evaluation Recommendations

- Redesign major roadways
 - SR-94 from Casa de Oro to Otay Lakes Road
 - SR-67 from Lakeside to Ramona
 - I-8 at Puetz Valley Road
 - Wildcat Canyon Road
- Planning
 - I-15 at Lake Hodges may be working as it is if water levels are allowed to remain low periodically



2014 San Diego County Linkages Evaluation Recommendations

- Acceptance
 - accept the things that we can not change
- Management
 - Change the things that we can
- Data
 - Get the information to know the difference
- Adaptive Management
 - Try again if it didn't produce the results that you thought it would



Questions:

