

# California Department of Fish and Game Law Enforcement Division



[WWW.DFG.CA.GOV/ENFORCEMENT](http://WWW.DFG.CA.GOV/ENFORCEMENT)

# Open Space Areas

## **The California Department of Fish and Game**

Will support open space areas in San Diego County through uniformed patrol and enforcement of resource related laws and regulations.

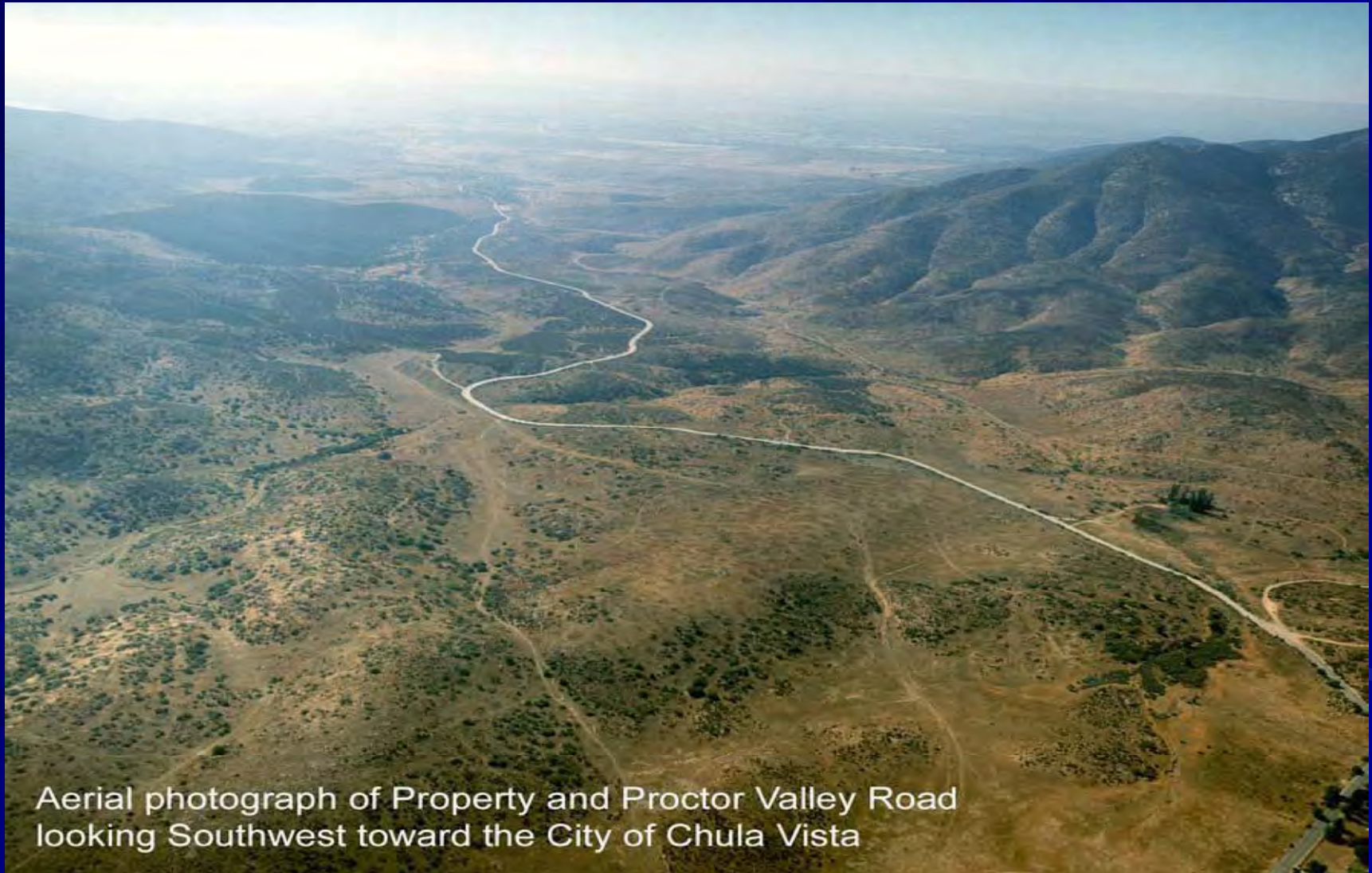
This effort will aid in reducing illegal activities on Open spaces in the county by increasing our law enforcement presence on them.

# Areas patrolled

- Proctor Valley Road
- Crestridge Ecological Reserve
- San Elijo Lagoon Ecological Reserve



# Proctor Valley Road



Aerial photograph of Property and Proctor Valley Road  
looking Southwest toward the City of Chula Vista



# Proctor Valley Road

## Vehicular Trespass



# Proctor Valley Road

## Vehicular Trespass



## Destruction of habitat



# PVR Stats (May 20<sup>th</sup> – Dec 10<sup>th</sup>)

- 16 Patrols
- 27 contacts
- 4 warnings

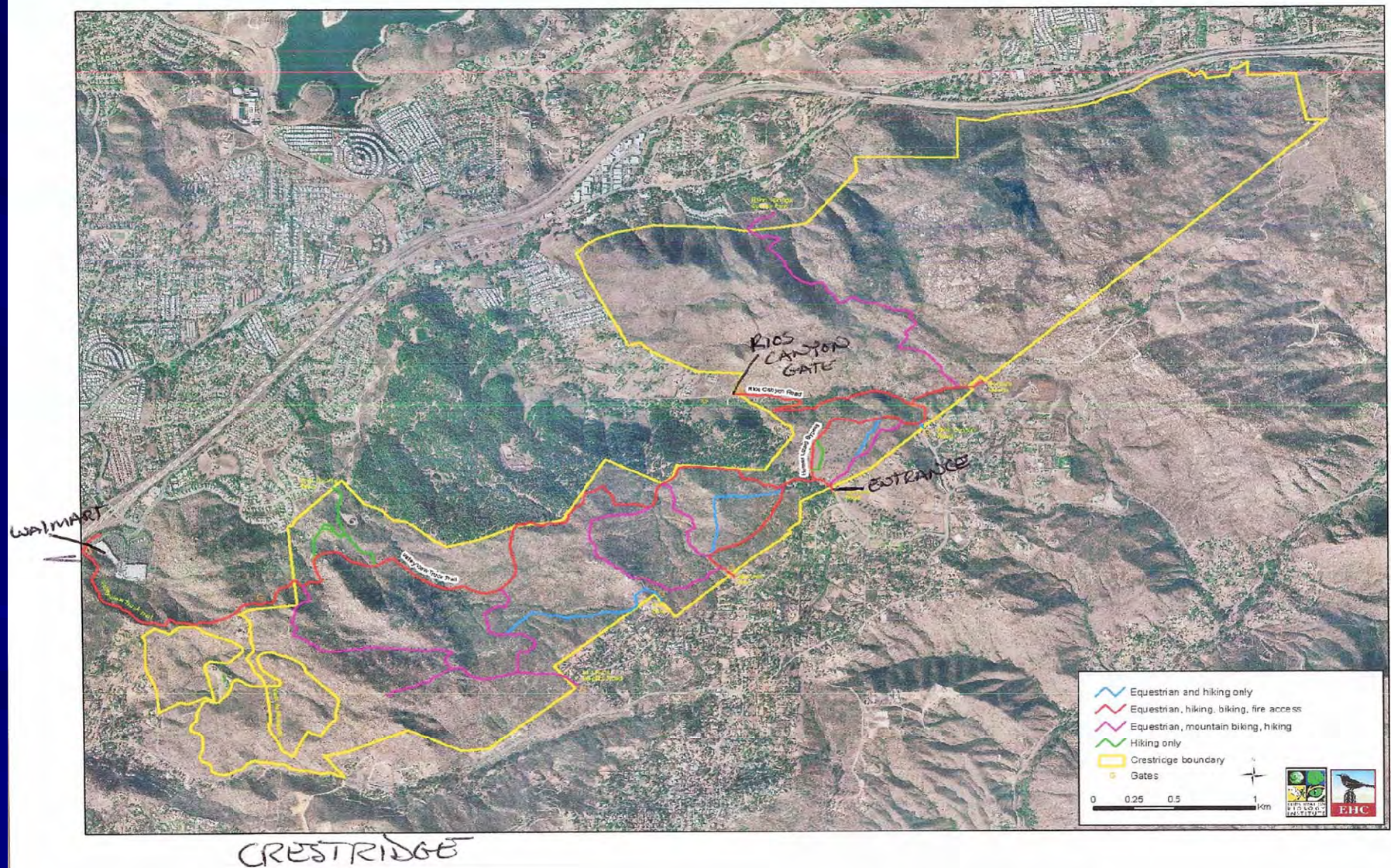
Vehicular trespass

- 5 citations issued

Vehicular trespass (off roading)



# Crestridge Ecological Reserve





# Crestridge Ecological Reserve



Close proximity to  
residential homes

Homeless



# Crestridge Ecological Reserve



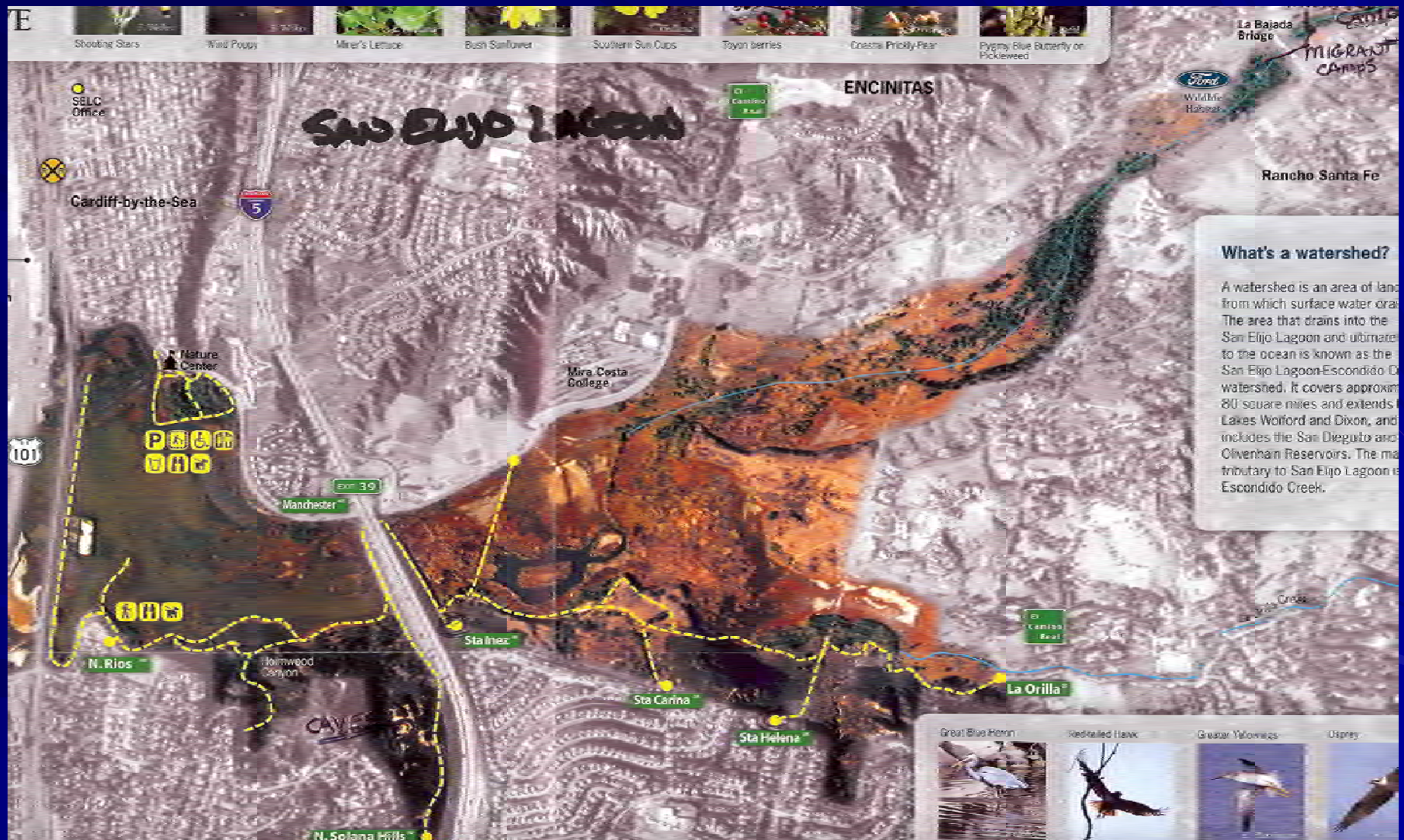
Vehicular Trespass



# Crest Stats (May 20<sup>th</sup> – Dec 10<sup>th</sup>)

- 15 Patrols
- 31 contacts
- 3 warnings
  - Transients
- 0 citations issued

# San Elijo Lagoon





# San Elijo Lagoon

Migrant Camps

Destruction of habitat





# San Elijo Lagoon





# San Elijo Lagoon



Trespass



Dog off leash



# San Elijo Lagoon





# SEL Stats (May 20<sup>th</sup> – Dec 10<sup>th</sup>)

- 14 Patrols

- 92 contacts

- 9 warnings

  - 8 Transients/Migrant workers

  - 8 Trespass on foot

  - 1 Dog off leash

- 9 citations issued

  - 6 Trespass (caves )

  - 3 Dogs off leash

# Stat Totals (May 20<sup>th</sup> – Dec 10<sup>th</sup>)

- 27 Days (Patrols (16 PVR, 15 CER, 14 SEL))
- 150 contacts
- 24 warnings
  - 11 Transients/Migrant workers (CER/SEL)
  - 8 Trespass on foot (SEL)
  - 4 Vehicular trespass (PVR)
  - 1 Dog off leash (SEL)
- 14 citations issued
  - 5 Vehicular trespass (off roading -PVR)
  - 6 Trespass (caves - SEL)
  - 3 Dogs off leash (in ecological reserve - SEL)



# Budget Numbers

(May 20<sup>th</sup> – Dec 10<sup>th</sup>)

A. Operational Overtime	\$ 51,000	\$ 53,015	\$ 2,015
B. Fringe Benefits	\$ 3,902	\$ 4,056	\$ 2,175
C. Equipment Maint	\$ 1,598	\$ -	\$ 1,598
D. Equipment	\$ 18,000	\$ -	\$ 18,000
E. Reimbursement for mileage	\$ 5,940	\$ 4,317	\$ 1,623
F. Travel	\$ 1,588	\$ -	\$ 1,588
G. 21.91% Overhead	\$ 17,972	\$ 13,450	\$ 4,522
TOTAL	\$100,000	\$ 74,838	\$ 25,162

# Contact info.

Lt. Mike Ference

Email = [Mference@dfg.ca.gov](mailto:Mference@dfg.ca.gov)

Phone = 858-467-4201