

San Diego Invasive Weed Update:

Work on three CDFA San Diego Weed Management Area Grants

**County of San Diego,
Department of Agriculture Weights & Measures (AWM)**

**Jason Giessow, Dendra Inc:
jgiessow@cox.net**

**Mark Martinez, County of San Diego AWM:
Mark.Martinez@sdcounty.ca.gov**

CDFA WMA Grants: AB2470

**San Diego County was awarded 3 grants: work
2019/20 and 2020/21**

- 1) Barbed goatgrass and spotted knapweed**
- 2) Ward's weed**
- 3) Volutaria (desert knapweed): no work yet**

Invasive Non-Native:
Barbed goat grass
(*Aegilops triuncialis*)

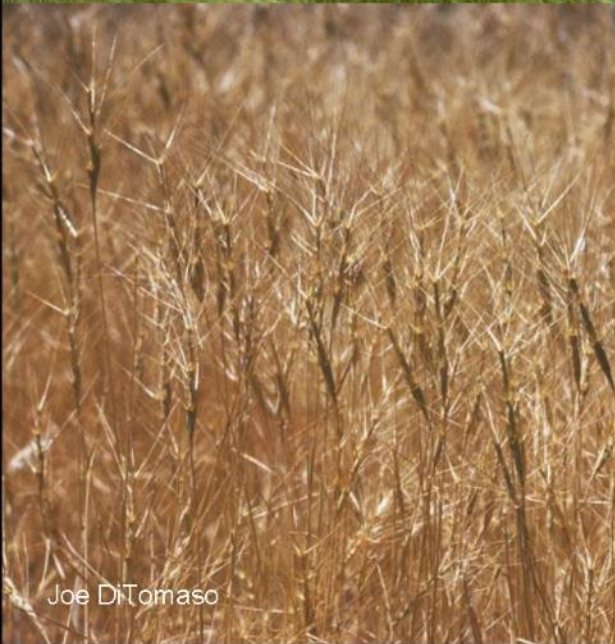
Description: annual grass, 17-45cm ht, leaf blade 1.5-7cm, 2-3mm wide; inflorescence 2-5.5c, spike like; fertile spikelet 2-3 awned, dital spikelet 3-awned or 1-awned with 2 lateral teeth.

Ecology: rangelands, grasslands, and oak woodlands. Cattle/rangelands are areas of greatest risk for introduction/invasion.

Similar to (see back): Three-awned goat grass *Aegilops neglecta* (non-native)



Joe DiTomaso



Joe DiTomaso

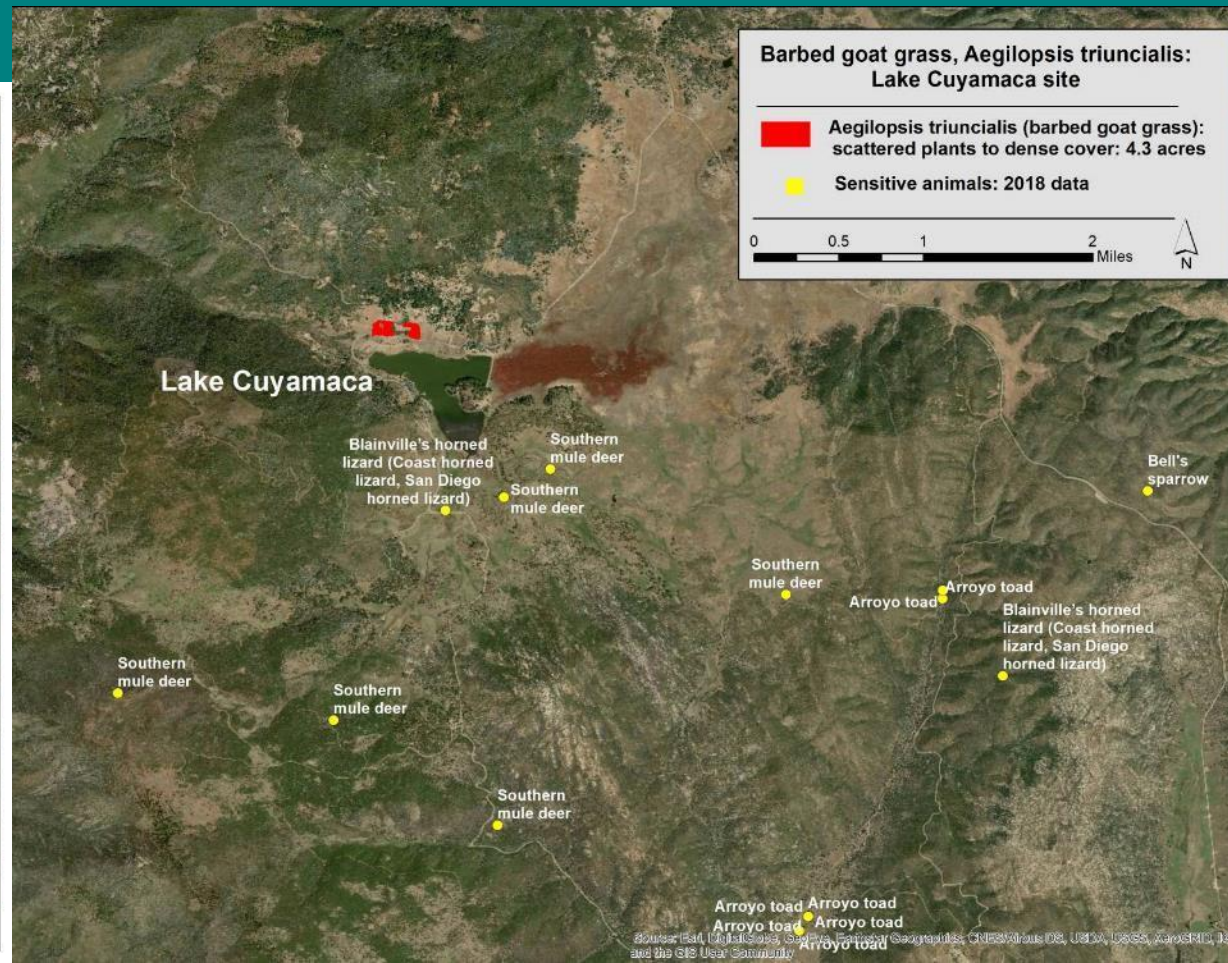


Joe DiTomaso



Barbed goatgrass

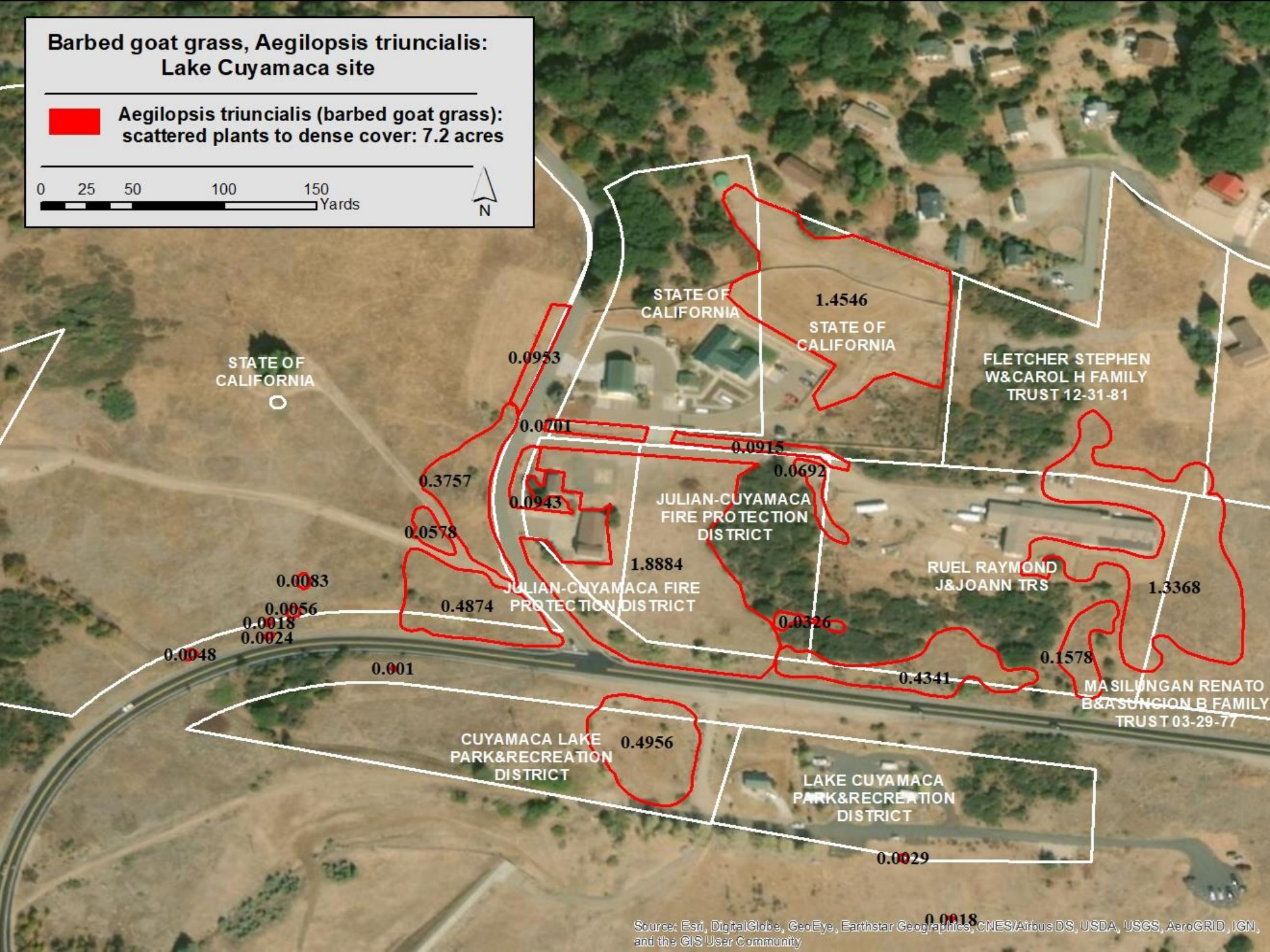
Site	Size of population	Treated in:	Treated by:	Funding status
Fallbrook NWS, DoD	2.0 ac	Started in 2011, eradicated. Monitoring is ongoing	DoD	Funded: DoD
Lake Cuyamaca	4.2 ac	Discovered 2018, Treated 2019	County AWM	CDFA WMA Grant



**Barbed goat grass, *Aegilopsis triuncialis*:
Lake Cuyamaca site**

 ***Aegilopsis triuncialis* (barbed goat grass):
scattered plants to dense cover: 7.2 acres**

0 25 50 100 150
Yards





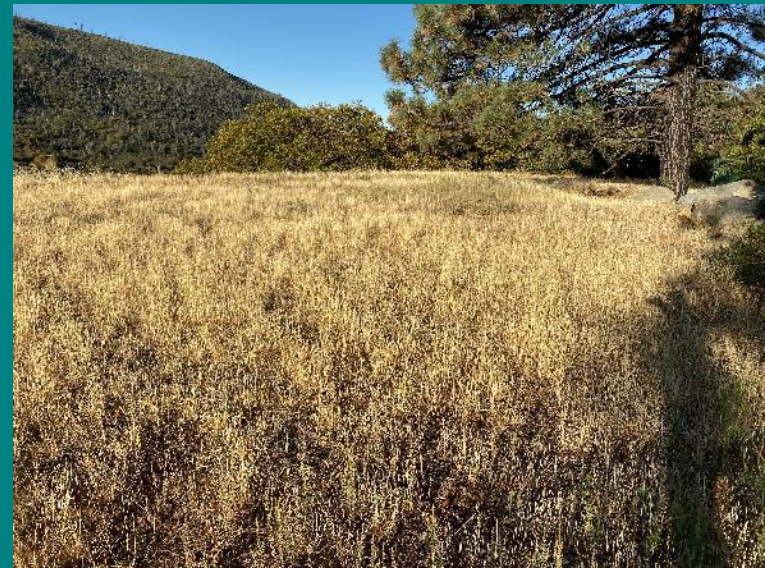
**Barbed
goatgrass**



**Barbed
goatgrass**

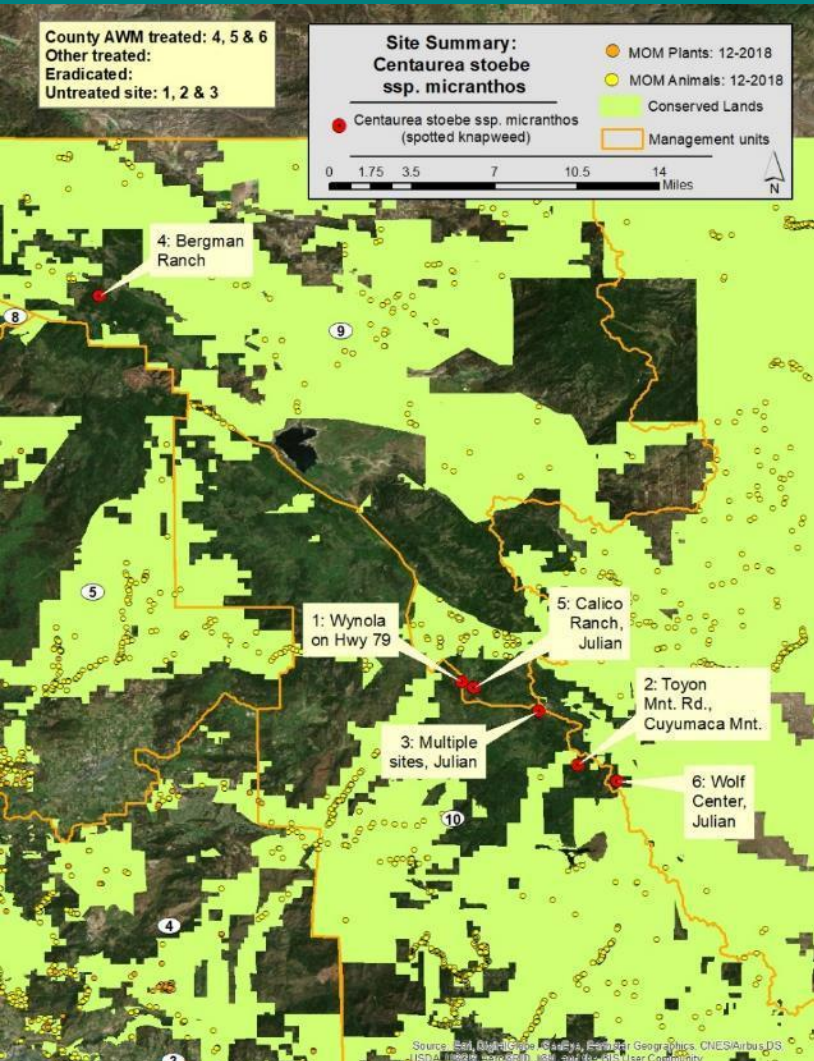


Barbed goatgrass



Spotted knapweed

Site	Size of population	Treated in:	Treated by:	Funding status
Bergman Ranch	4.2 acres	2014-2019	County AWM	CDFA WMA Grant
Calico Ranch	0.7 acres	2018-2019	County AWM	CDFA WMA Grant
Wolf Center	3.0 acres	2015-2019	County AWM	CDFA WMA Grant



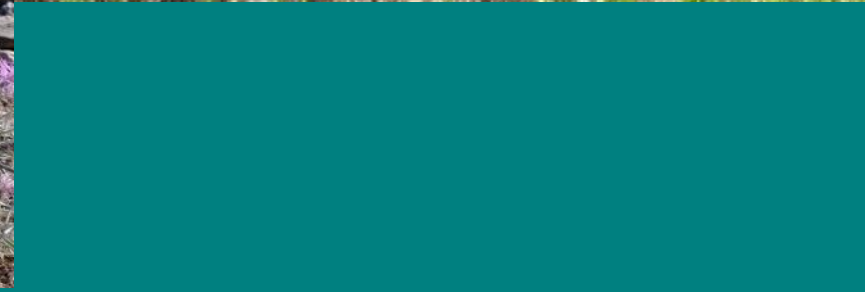
Invasive Non-Native:
Spotted knapweed
(*Centaurea stoebe* ssp. *micranthos*)

Description: Biennial/perennial, stems not winged, short-stiff hairy leaves resin-dotted, pink or purple flower, generally many in open, panicle-like clusters, phyllaries NOT spine tipped

Ecology: Disturbed areas, grasslands, open sites, overgrazed rangelands, roadsides, logged areas. Crowds out native species and forage for livestock, can invade undisturbed native bunchgrass stands.

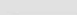
Similar to: When in flower not much else to confuse with, when dry may be similar to other *Centaurea* species, though this one has no spines.



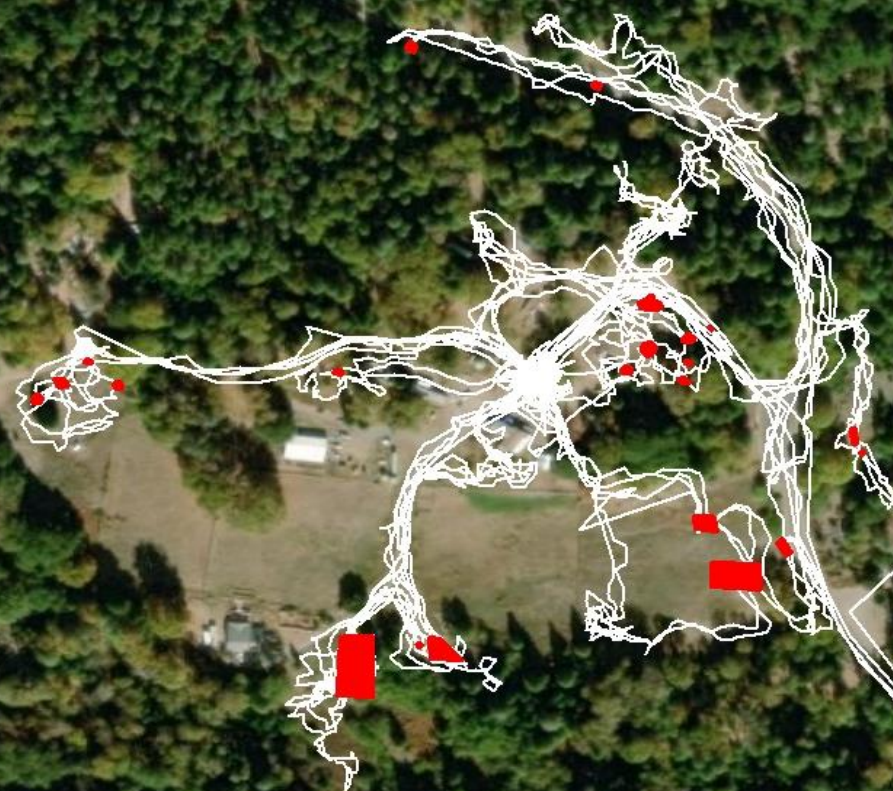


Centaurea stoebe: Site #4 Bergman Ranch

 **Centaurea stoebe**
(spotted knapweed)

 **Survey lines**

0 25 50 100 150 200 250 300
Yards



Mendenhall Valley Rd

Centaurea stoebe: Site #5 Callico Ranch

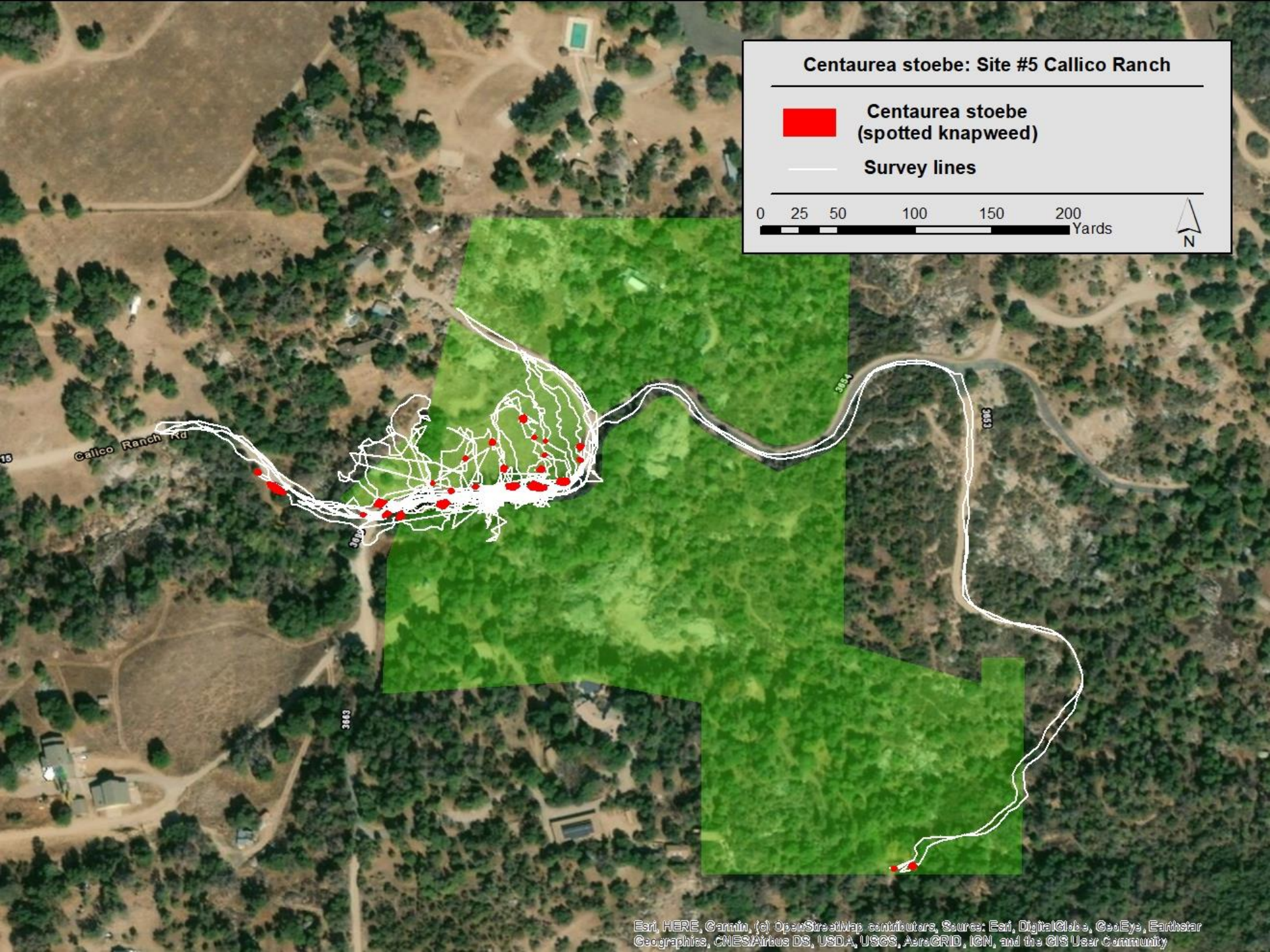


Centaurea stoebe
(spotted knapweed)



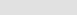
Survey lines

0 25 50 100 150 200
Yards

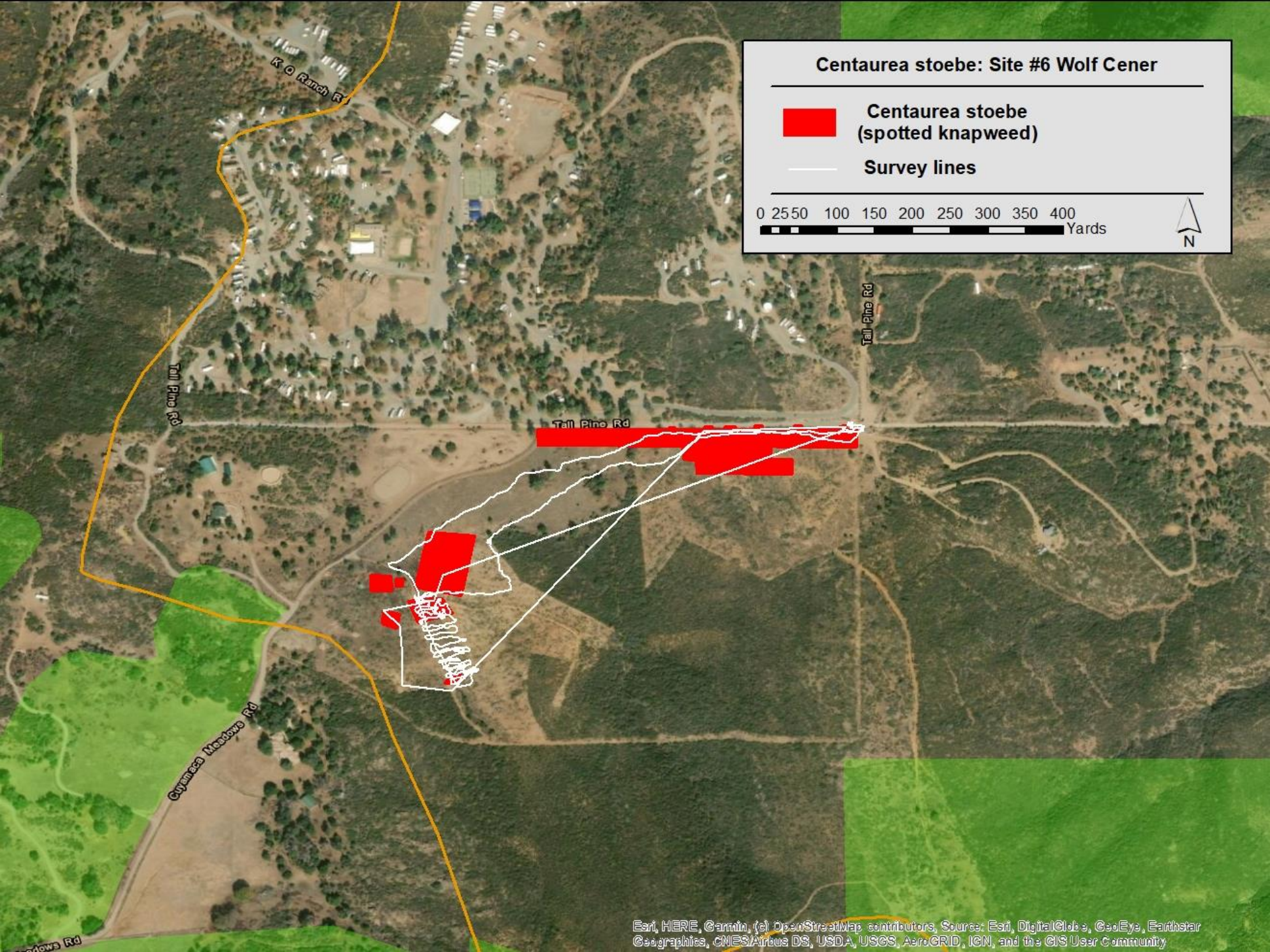


Centaurea stoebe: Site #6 Wolf Cener

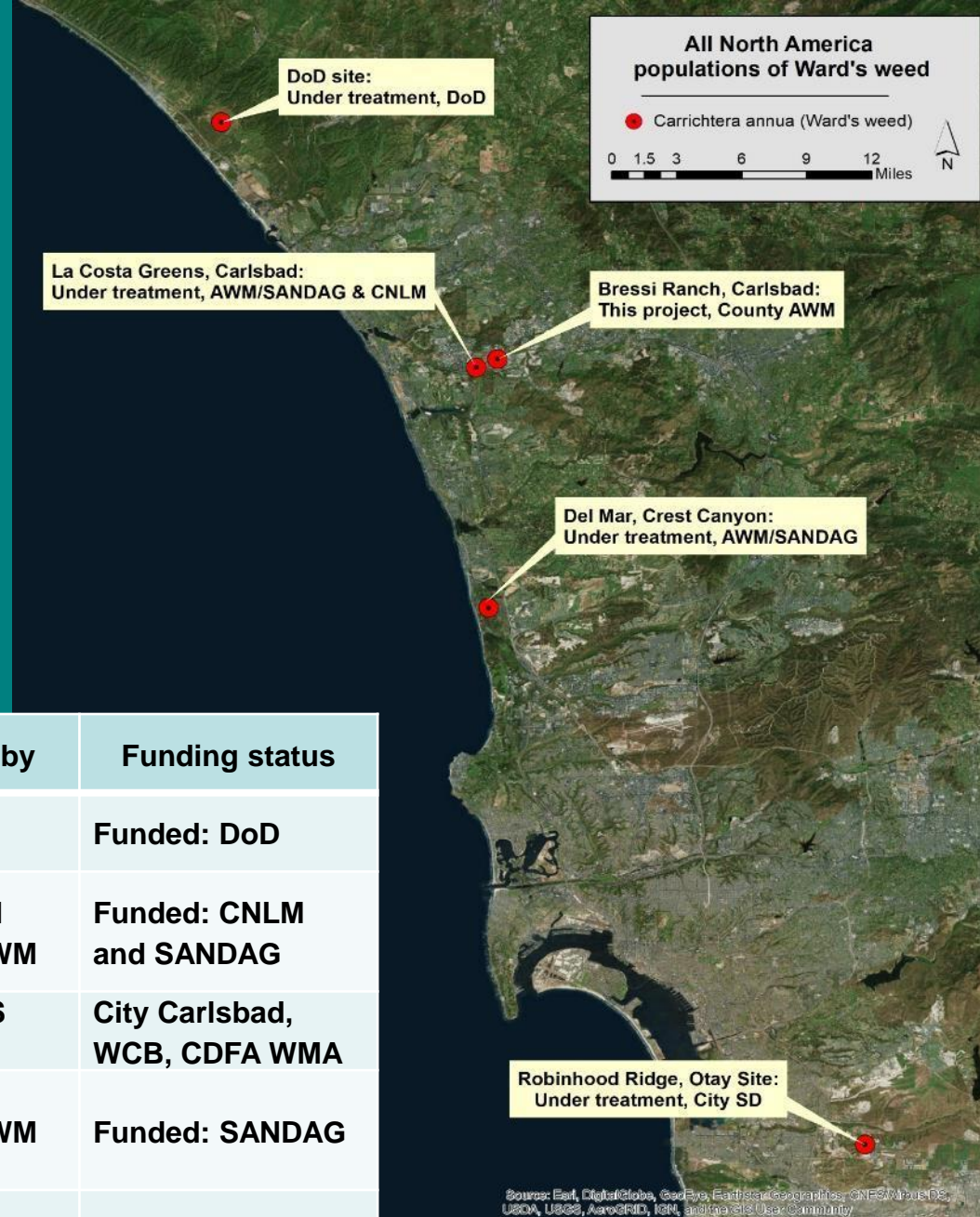
 Centaurea stoebe
(spotted knapweed)

 Survey lines

0 25 50 100 150 200 250 300 350 400
Yards



Ward's weed



Site	Size of population	Treated in	Treated by	Funding status
DoD	2.0 ac	2012-ongoing	DoD	Funded: DoD
La Costa Greens	9.2 ac	2012- Winter 2019/20 Done!	CNLM and County AWM	Funded: CNLM and SANDAG
Bressi Ranch	113 ac	In process	AWM, ACS Habitat	City Carlsbad, WCB, CDFA WMA
Crest Canyon, Del Mar	0.4 ac	Winter 2019/20 Done!	County AWM	Funded: SANDAG
Robinhood Ridge, Otay	0.4 ac	Winter 2019/20 Done!	City of San Diego	Funded: City of San Diego

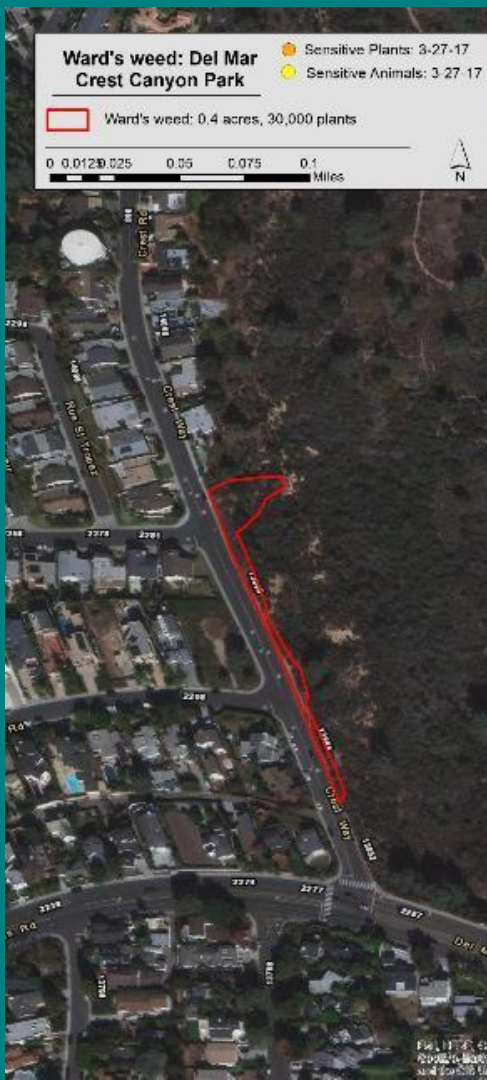
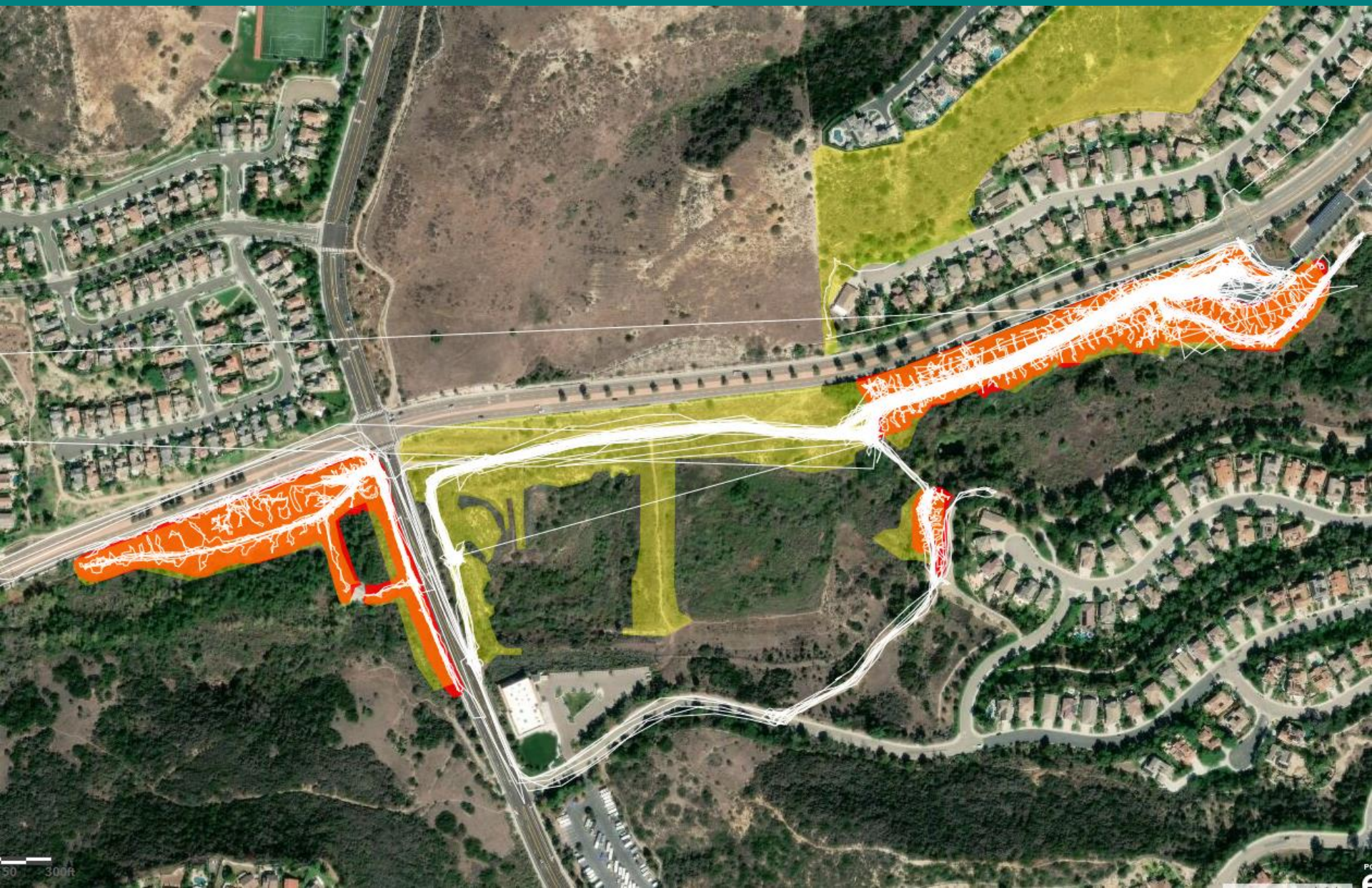


Fig. 11.4. Aerial map of the ACS Work Area and County Work Area. The ACS Work Area is outlined in red, and the County Work Area is outlined in yellow. The map includes a scale bar from 0 to 0.5 miles and a north arrow.



50 300ft

PO
6

